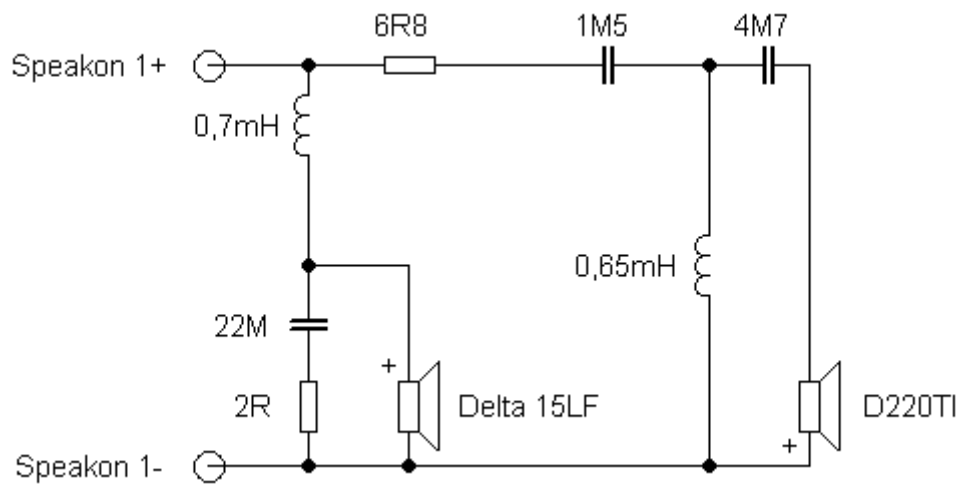


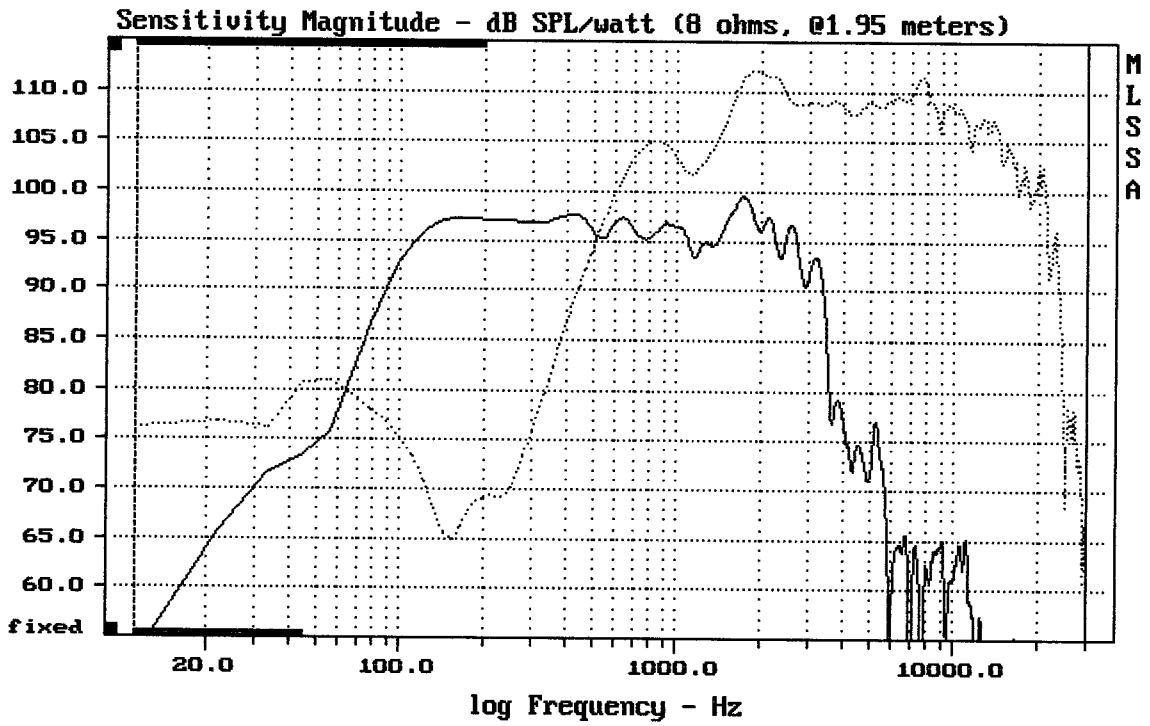
Sestava Eminence Delta 15LF + Selenium D220Ti + Selenium HM25-25

Osazení:

- Eminence DELTA-15LF 8/ohm
<http://eshop.prodance.cz/detailpage.asp?DPG=82363>
- Selenium D220Ti 8/ohm
<http://eshop.prodance.cz/detailpage.asp?DPG=90316>
- Selenium HM25-25
<http://eshop.prodance.cz/detailpage.asp?DPG=81673>

Schéma výhybky:

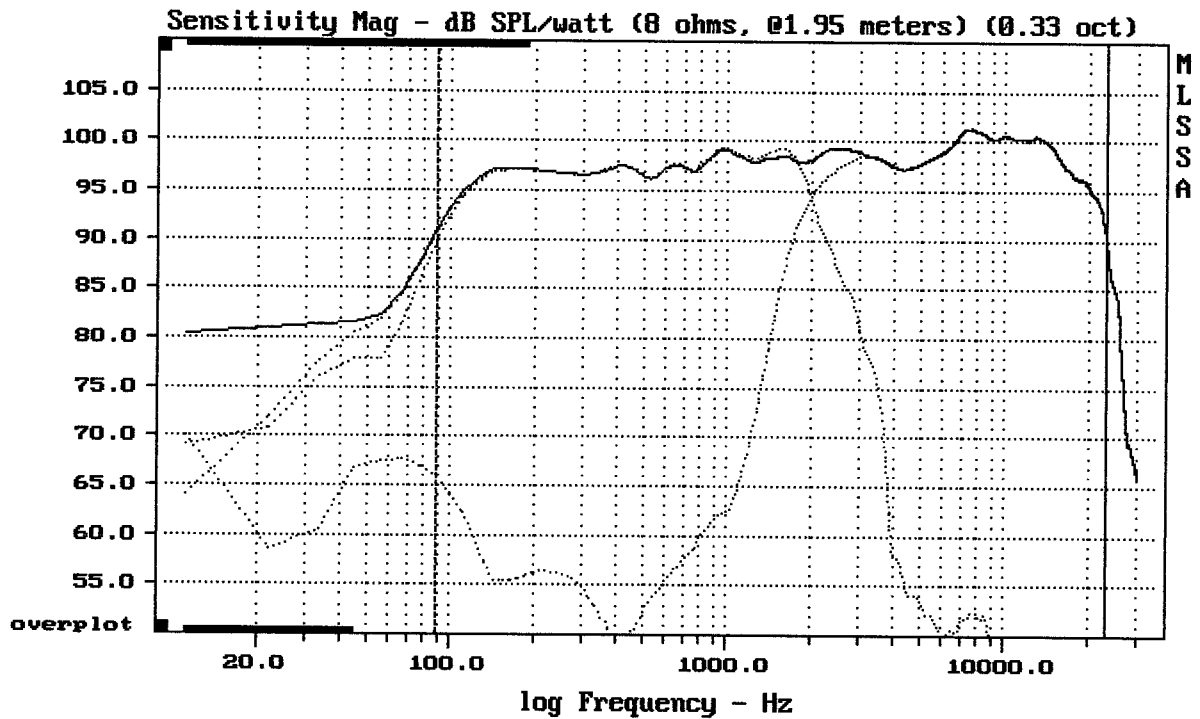




CURSOR: dy = 38.2142 x = 30007.1014 (2704)

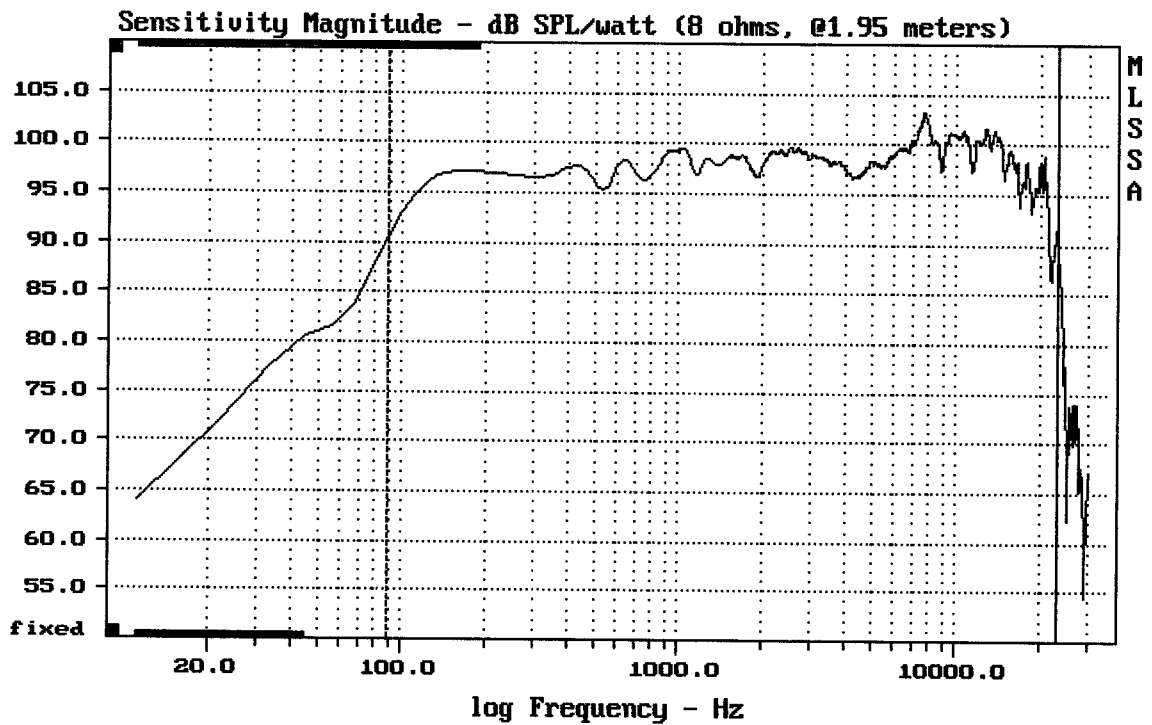
DELTA15LF + D220TI + HM25-25

MLSSA: Frequency Domain



Level (89:23304 Hz) = 98.06 dB SPL/watt (8 ohms, @1.95 meters) (0.33 oct)

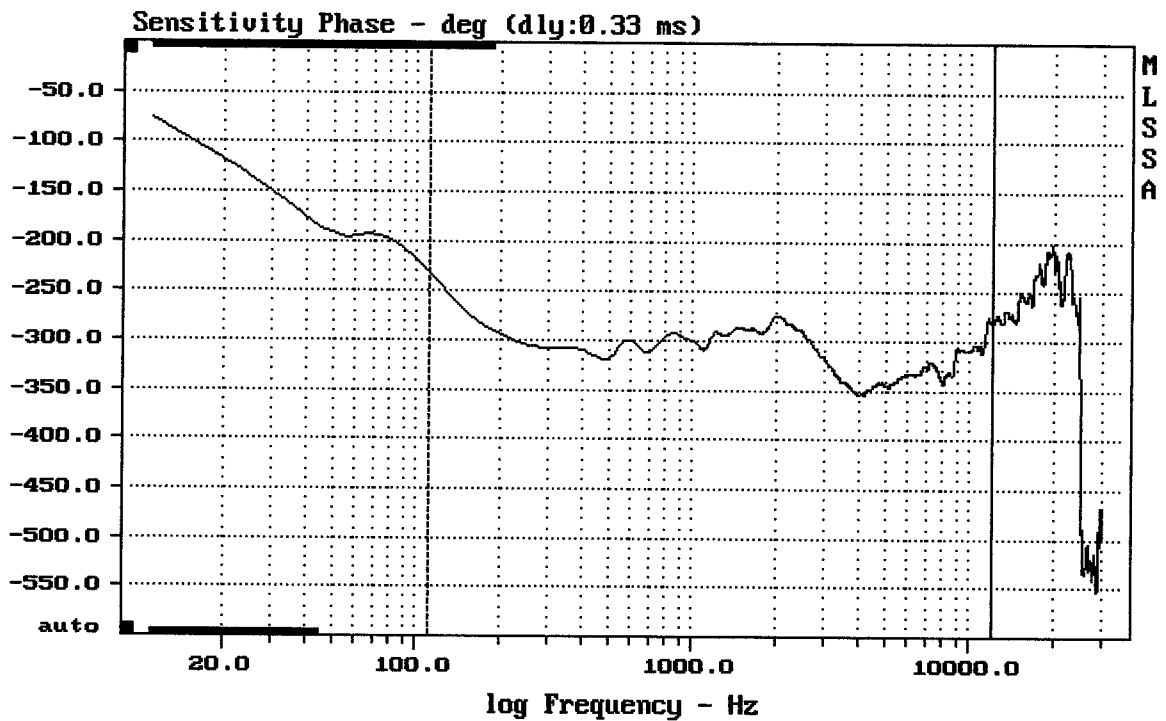
DELTA15LF + D220TI + HM25-25



mean: 98.27, rms: 98.64, std: 2.26, max: 103.11, min: 86.52

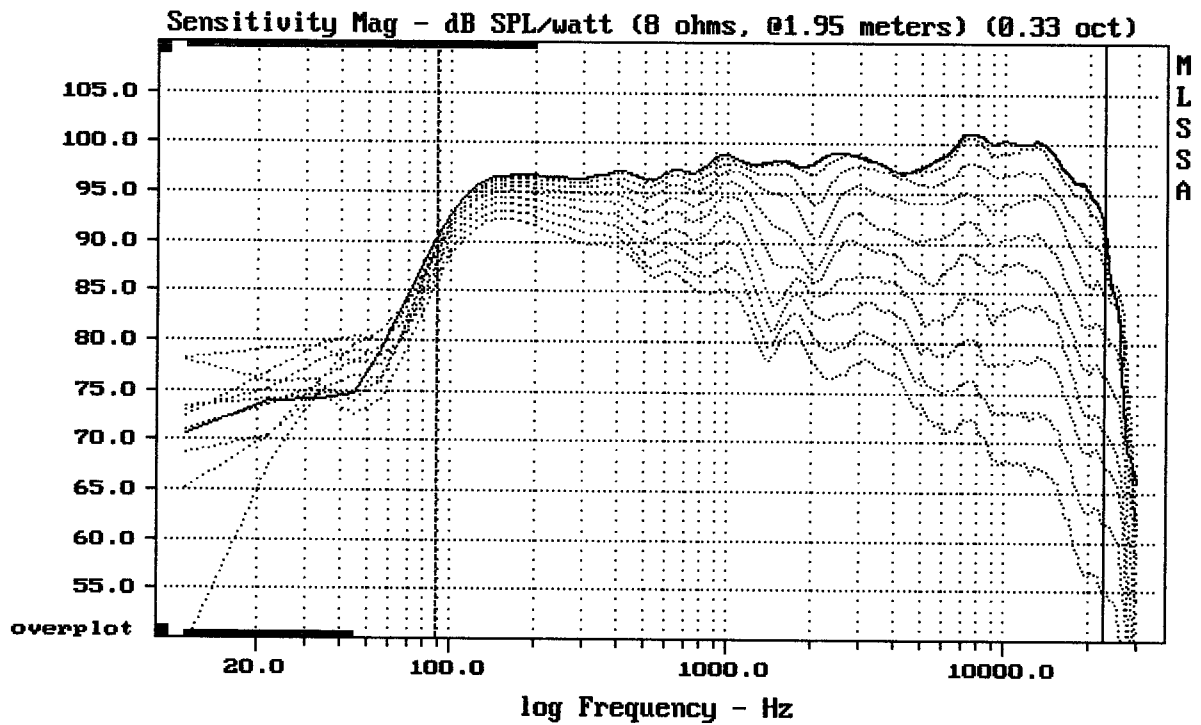
DELTA15LF + D220TI + HM25-25

MLSSA: Frequency Domain



mean: -317.4, rms: 318.1, std: 21.75, max: -231.5, min: -355.2

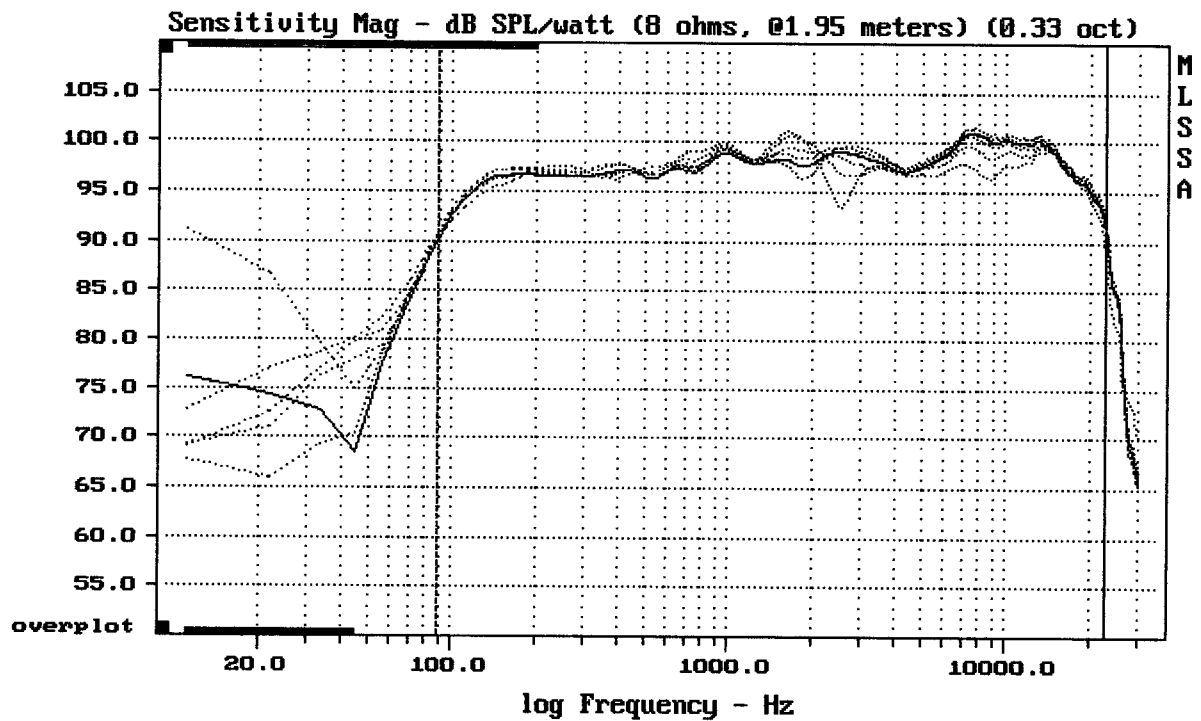
DELTA15LF + D220TI + HM25-25



Overlay Compare: dev= +26/-9.1, std= 7.3, avg= -30

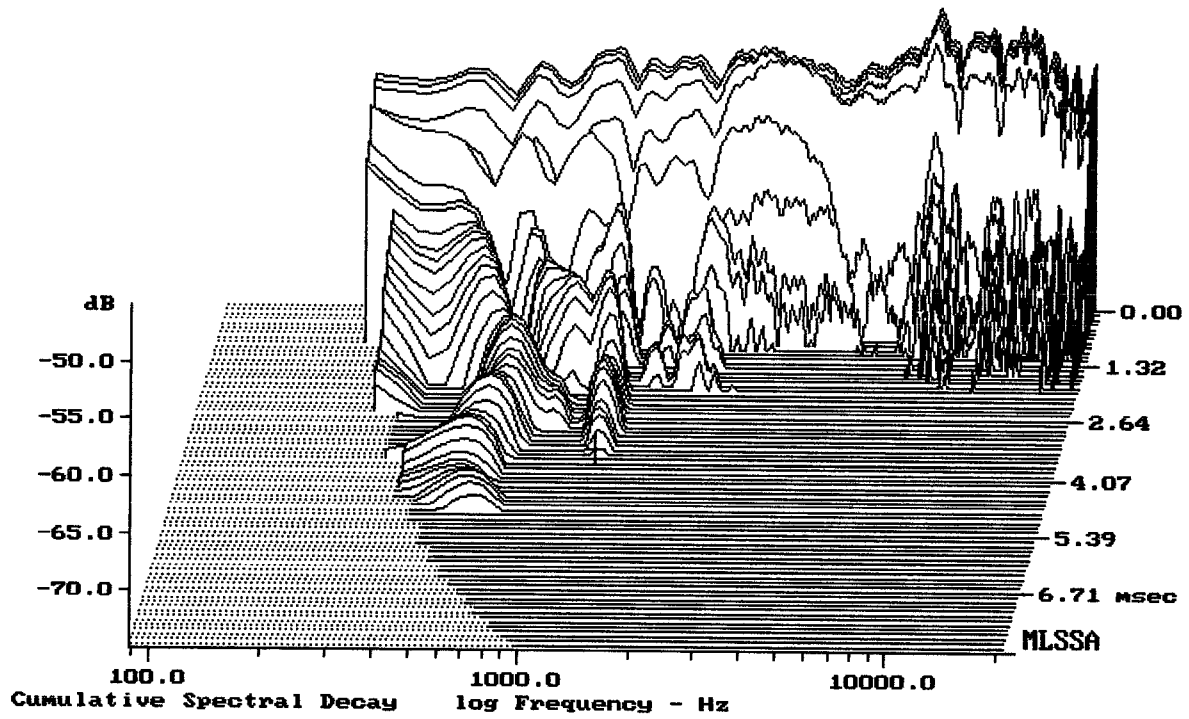
DELTA15LF + D220TI + HM25-25

MLSSA: Frequency Domain



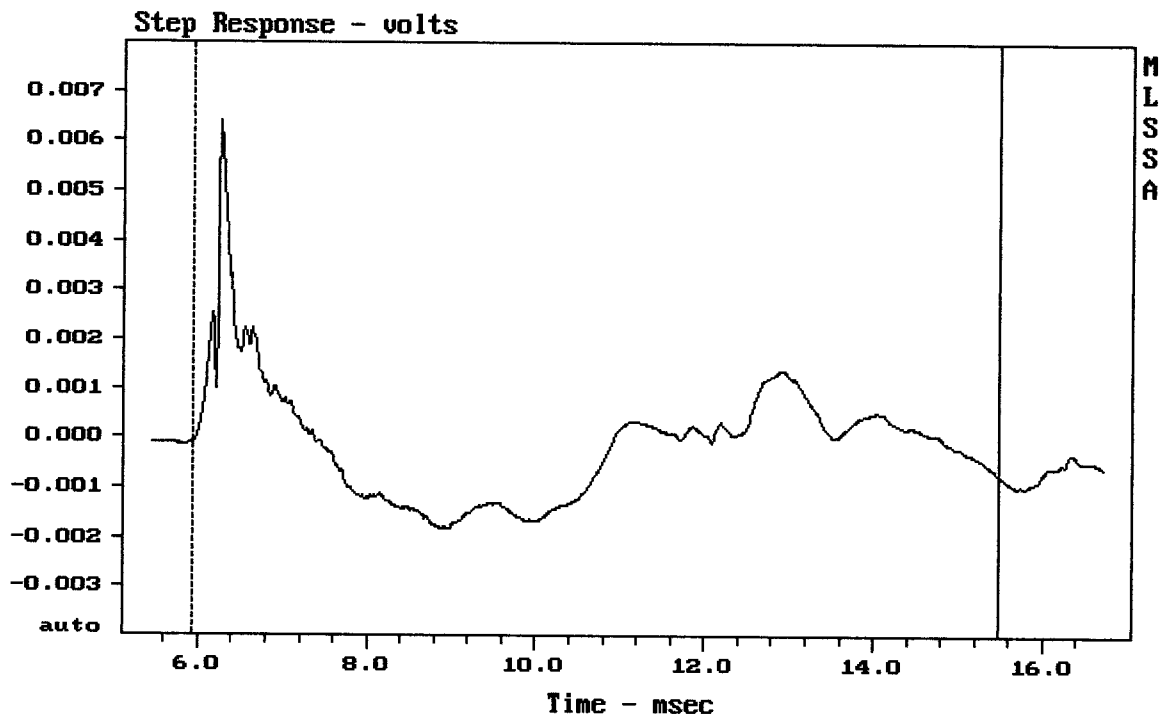
CURSOR: y = 90.8245 x = 23004.7046 (2073)

DELTA15LF + D220TI + HM25-25



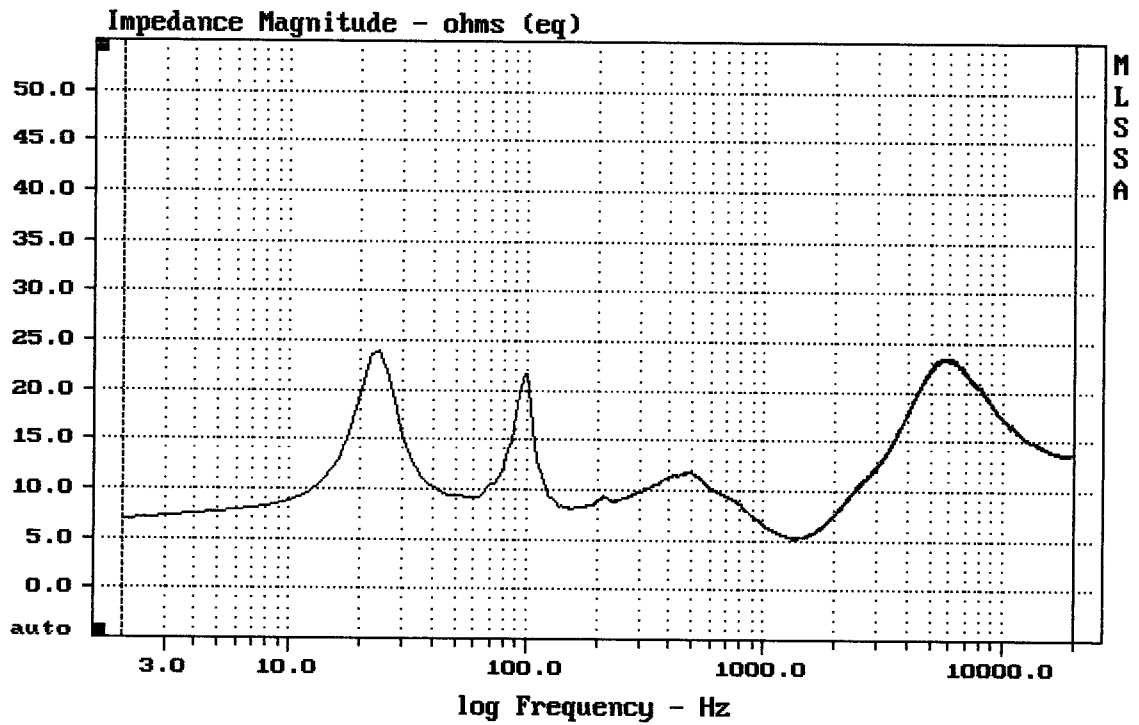
-74.53 dB, 1154 Hz (26), 3.520 msec (33)

DTTO



mean: -0.0001111, rms: 0.001188, std: 0.001183, max: 0.006416, min: -0.001819

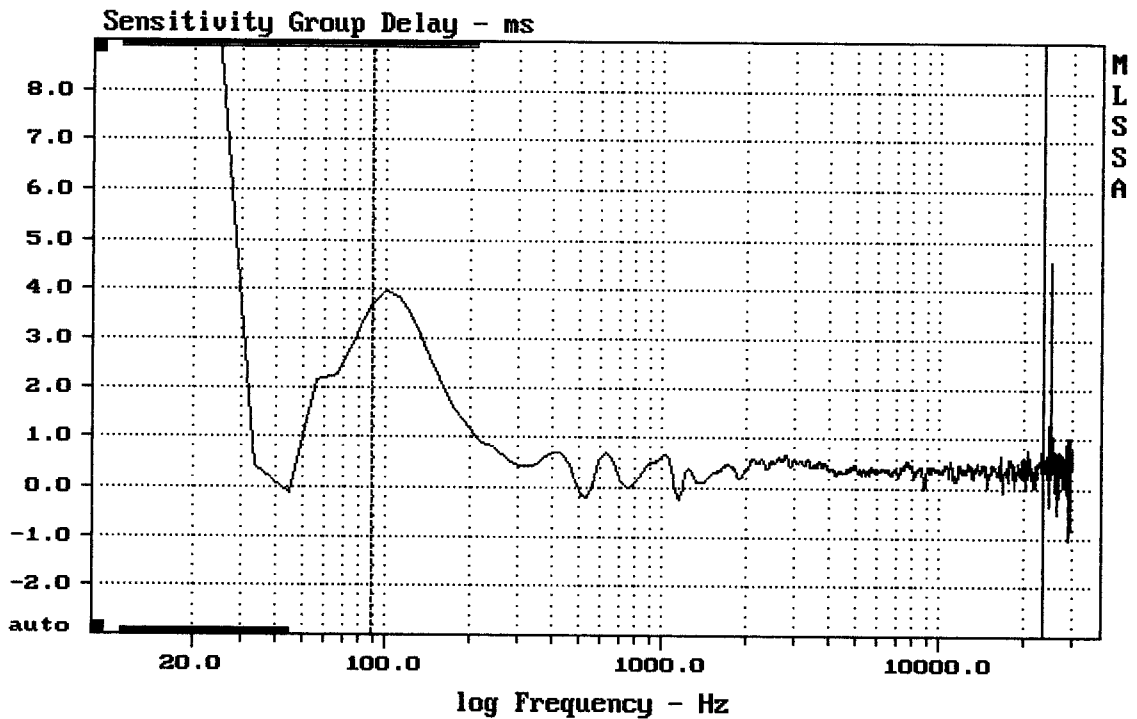
DELTA15LF + D220TI + HM25-25



mean: 15.62, rms: 16.2, std: 4.288, max: 24.04, min: 5.183

DELTA15LF + D220TI + HM25-25

MLSSA: Frequency Domain



mean: 0.3876, rms: 0.4474, std: 0.2234, max: 3.975, min: -0.221

DELTA15LF + D220TI + HM25-25