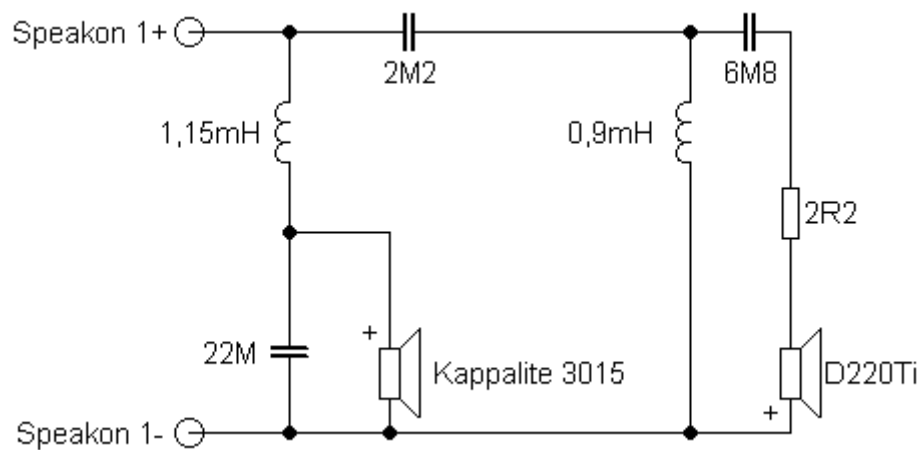


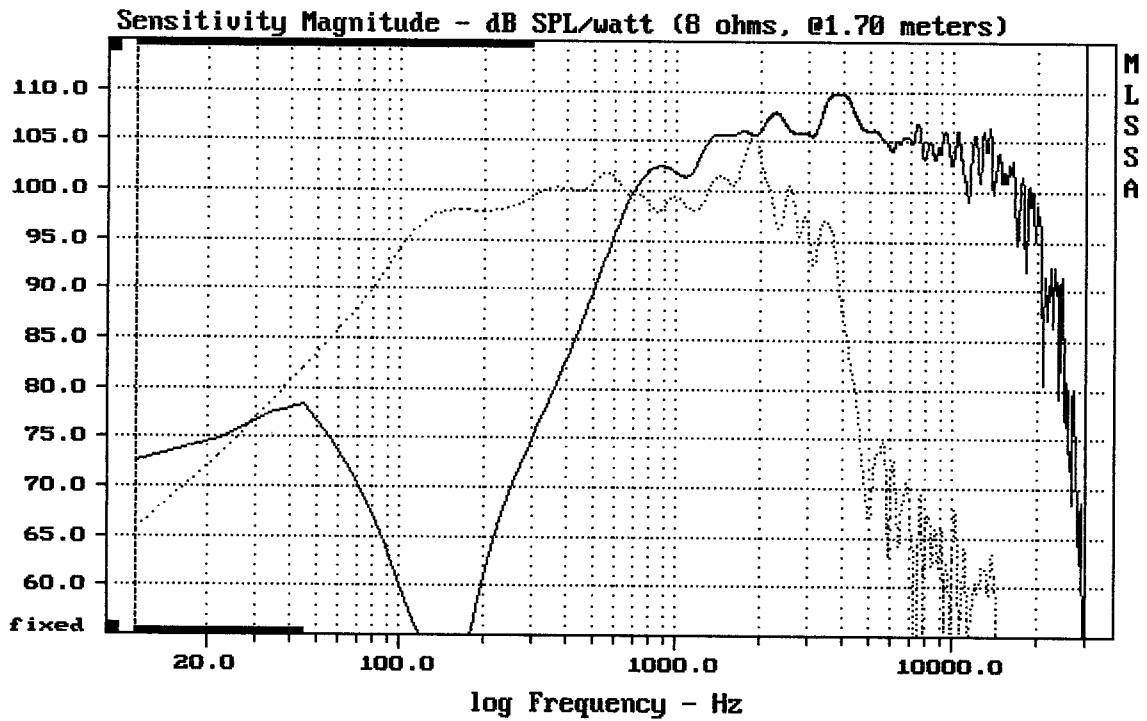
Sestava Eminence Kappalite 3015 + Selenium D220Ti OMF + Megaton A7570u

Osazení:

- Eminence Kappalite 3015 8/Ohm
<http://eshop.prodance.cz/DetailPage.asp?DPG=91489>
- Selenium D220Ti OMF 8/Ohm
<http://eshop.prodance.cz/DetailPage.asp?DPG=90768>
- Megaton A7570u
<http://eshop.prodance.cz/DetailPage.asp?DPG=83913>

Schéma výhybky:

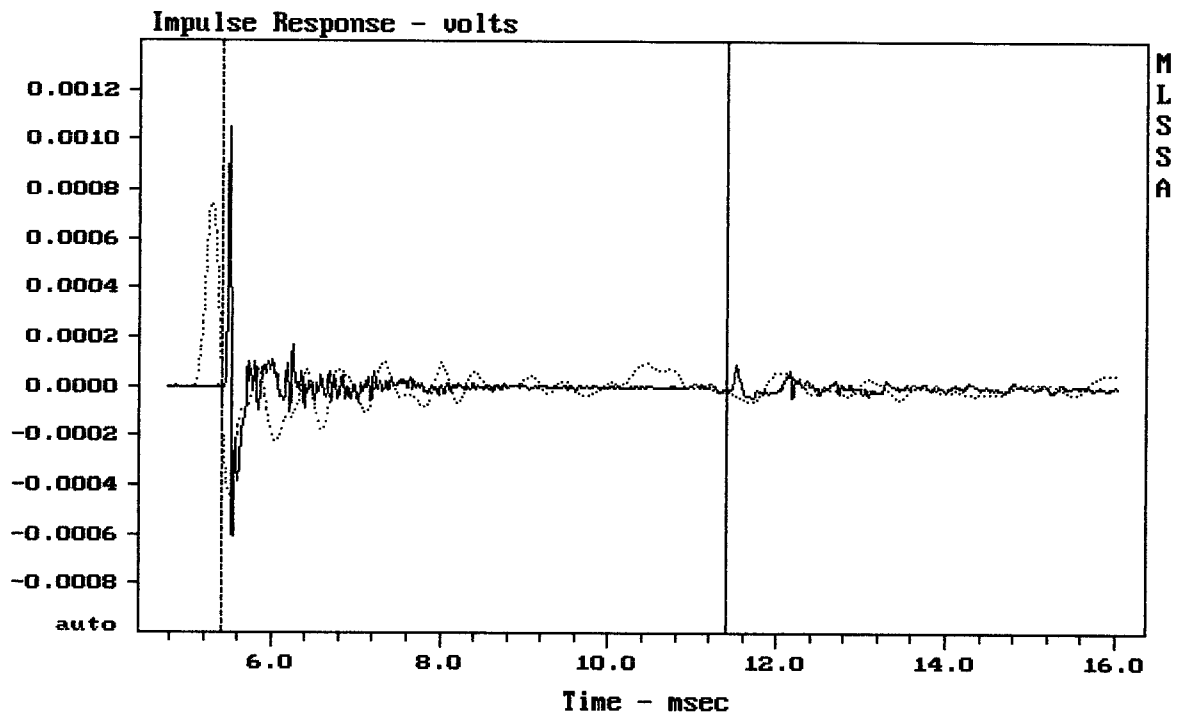




CURSOR: dy = -32.45 x = 30007.1014 (2704)

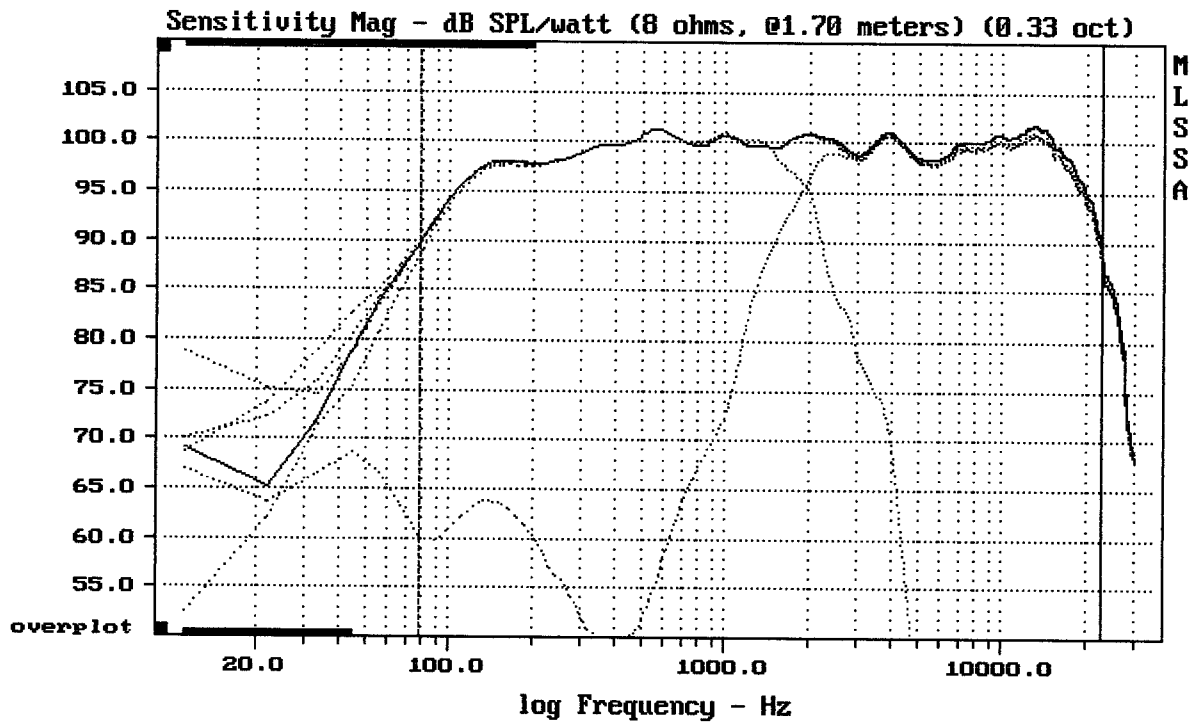
KAPPALITE 3015 + D220TI OMF + A7570u

MLSSA: Frequency Domain



mean: -1.729e-005, rms: 8.752e-005, std: 8.58e-005, max: 0.0001003, min: -0.00

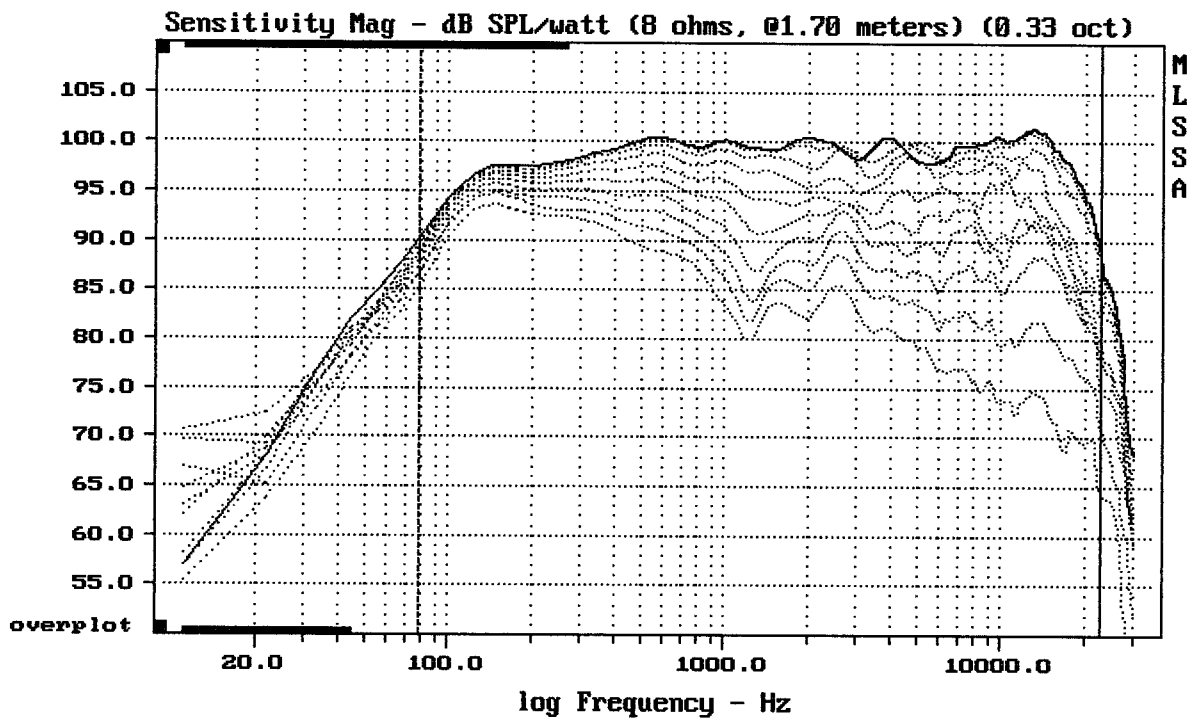
KAPPALITE 3015 + D220TI OMF + A7570u



Level (78:22905 Hz) = 99.04 dB SPL/watt (8 ohms, @1.70 meters) (0.33 oct)

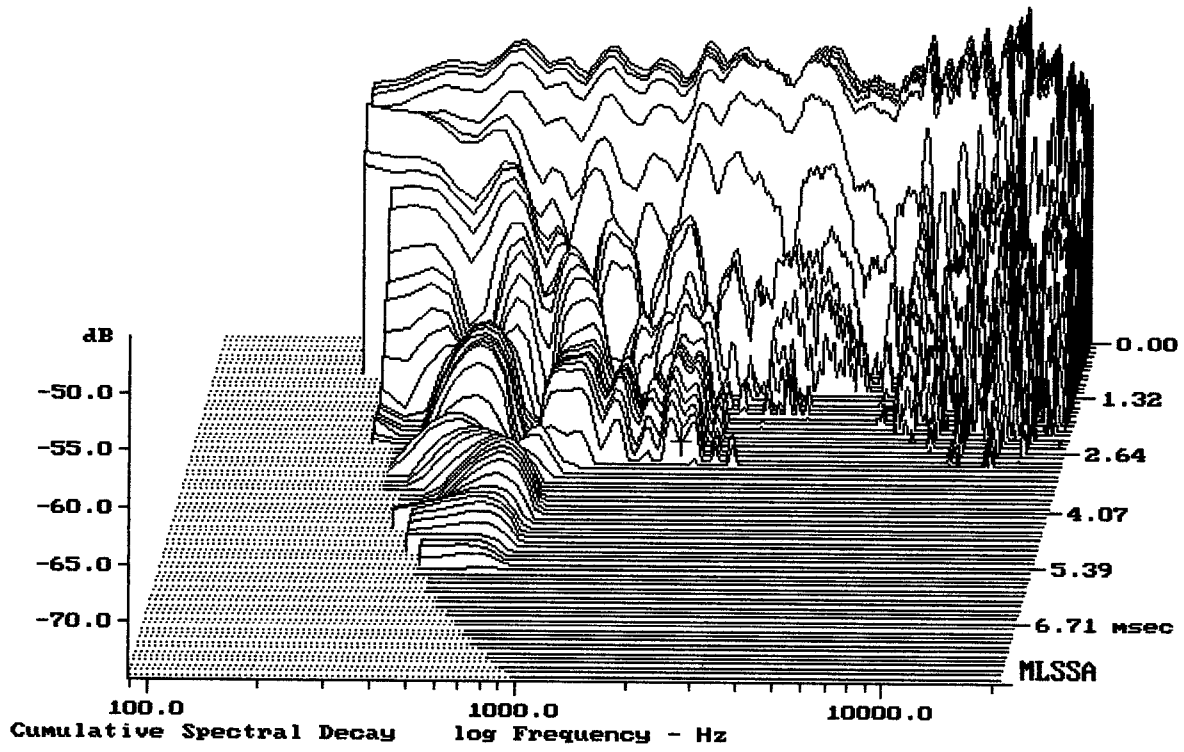
KAPPALITE 3015 + D220TI OMF + A7570u

MLSSA: Frequency Domain



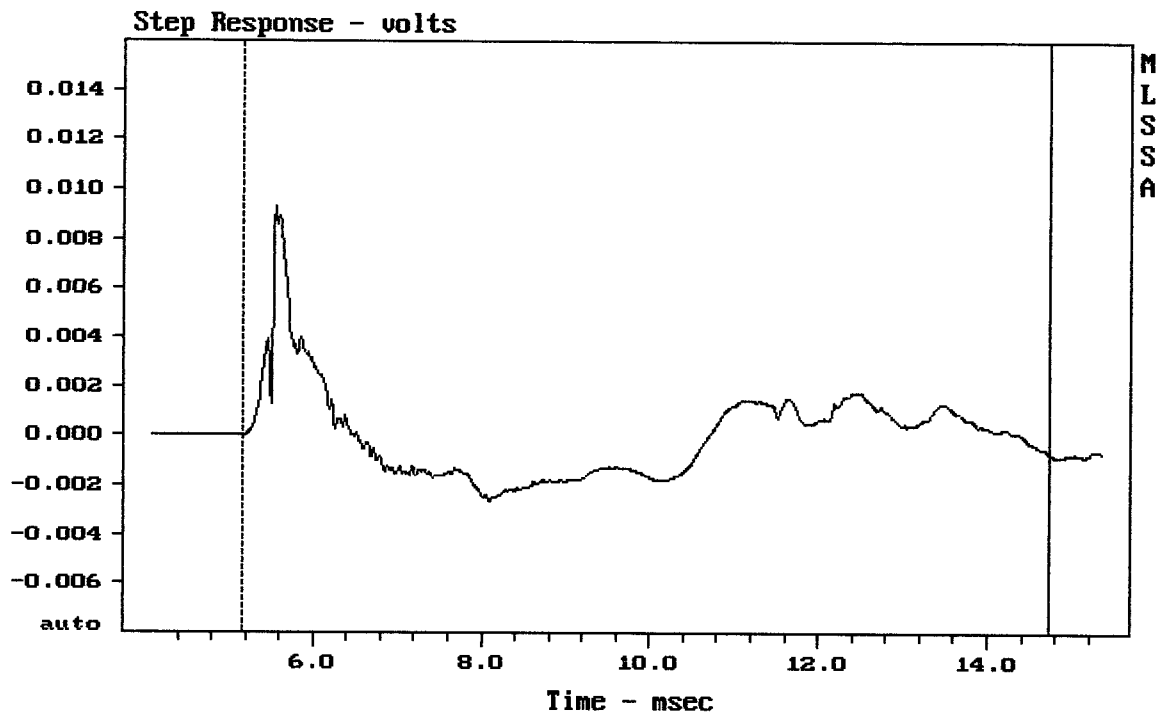
Overlay Compare: dev= +20/-6.1, std= 4.8, avg= -23

KAPPALITE 3015 + D220TI OMF + A7570u



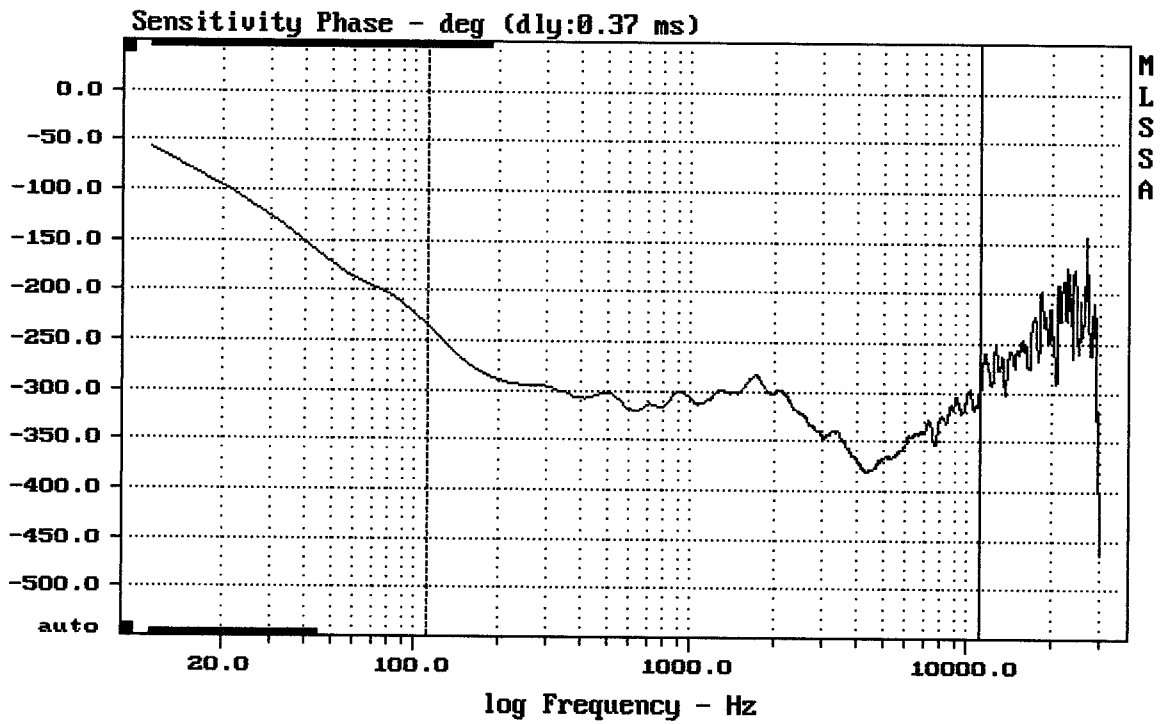
-73.44 dB, 1909 Hz (43), 2.860 msec (27)

DTTO



mean: 2.752e-005, rms: 0.001839, std: 0.001839, max: 0.009285, min: -0.002609

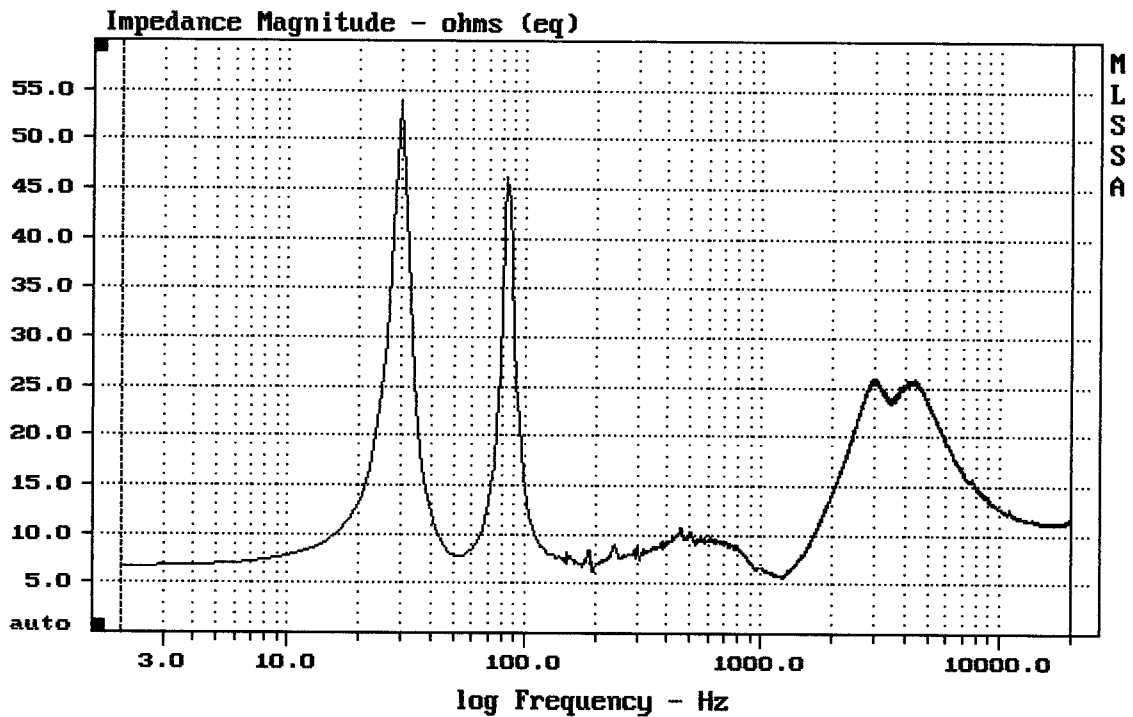
KAPPALITE 3015 + D220TI 0MF + A7570u



mean: -330.5, rms: 331.5, std: 25.61, max: -234, min: -381.3

KAPPALITE 3015 + D220TI OMF + A7570u

MLSSA: Frequency Domain



mean: 14.3, rms: 15.16, std: 5.039, max: 53.85, min: 5.711

KAPPALITE 3015 + D220TI OMF + A7570u