

Sestava 2x Eminence Beta-8 + B&C Speakers DE10 + ME10

Osazení:

- 2x Eminence Beta-8 8/Ohm

<http://eshop.prodance.cz/DetailPage.asp?DPG=84341>

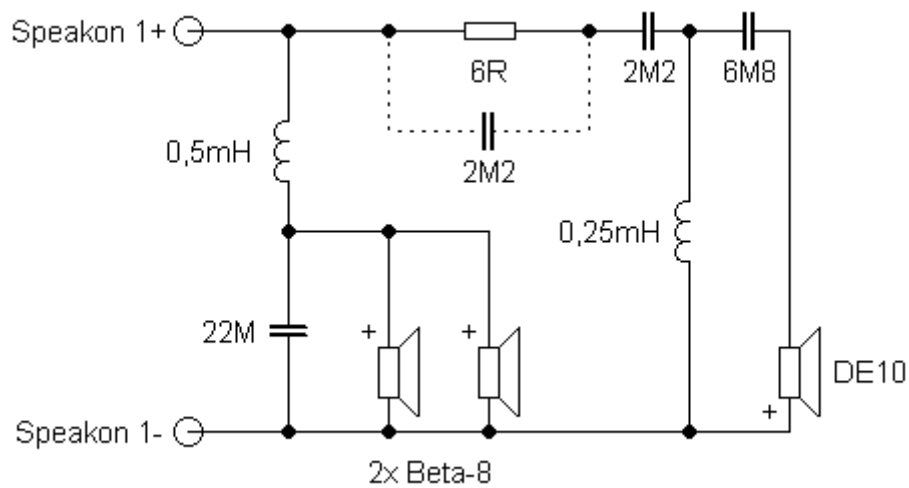
- B&C Speakers DE10 8/Ohm

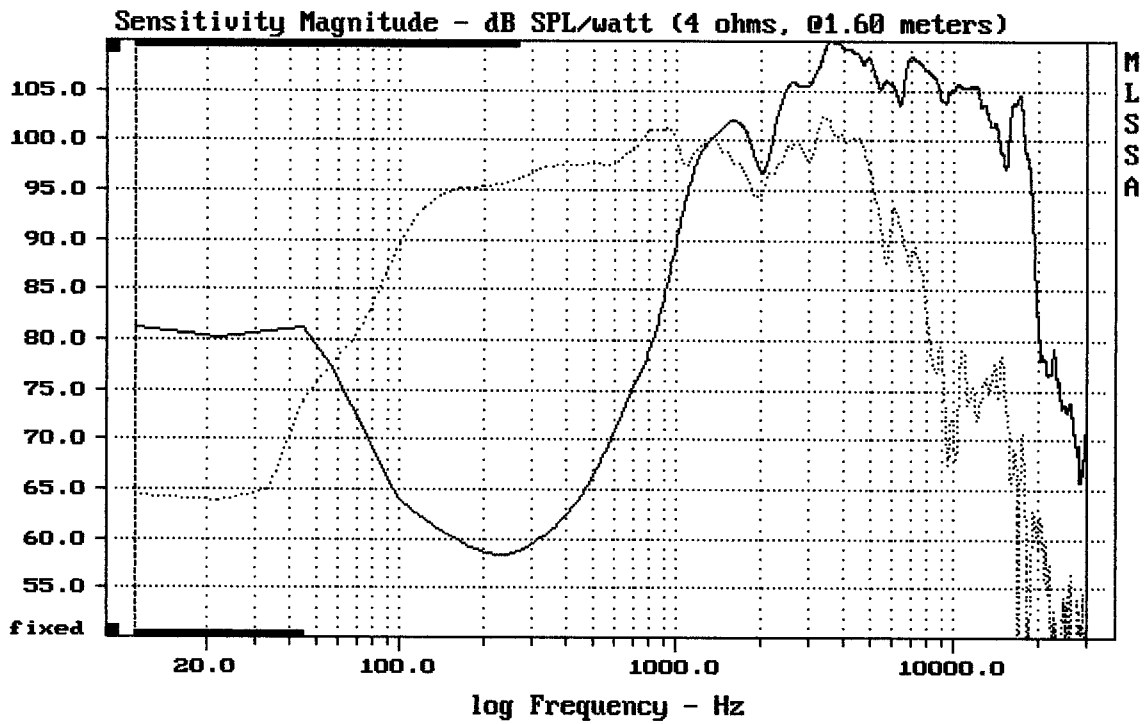
<http://eshop.prodance.cz/DetailPage.asp?DPG=82290>

- B&C Speakers ME10

<http://eshop.prodance.cz/DetailPage.asp?DPG=79956>

Schéma výhybky:

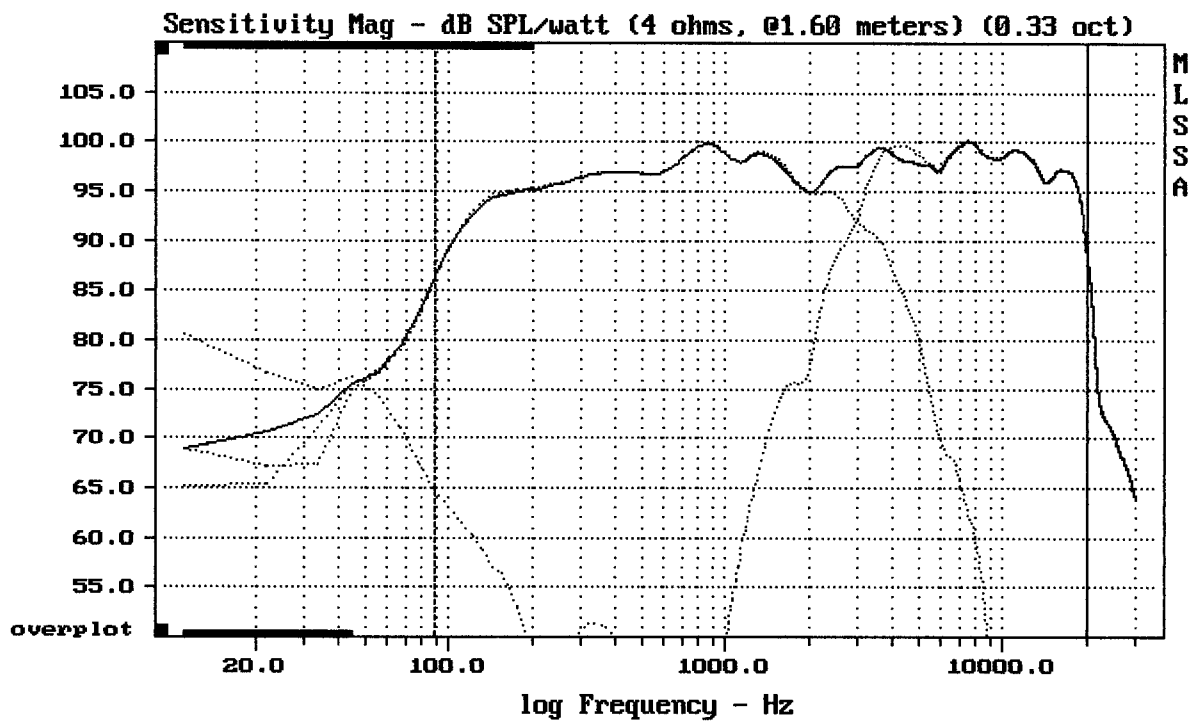




CURSOR: dy = -26.0693 x = 30007.1014 (2704)

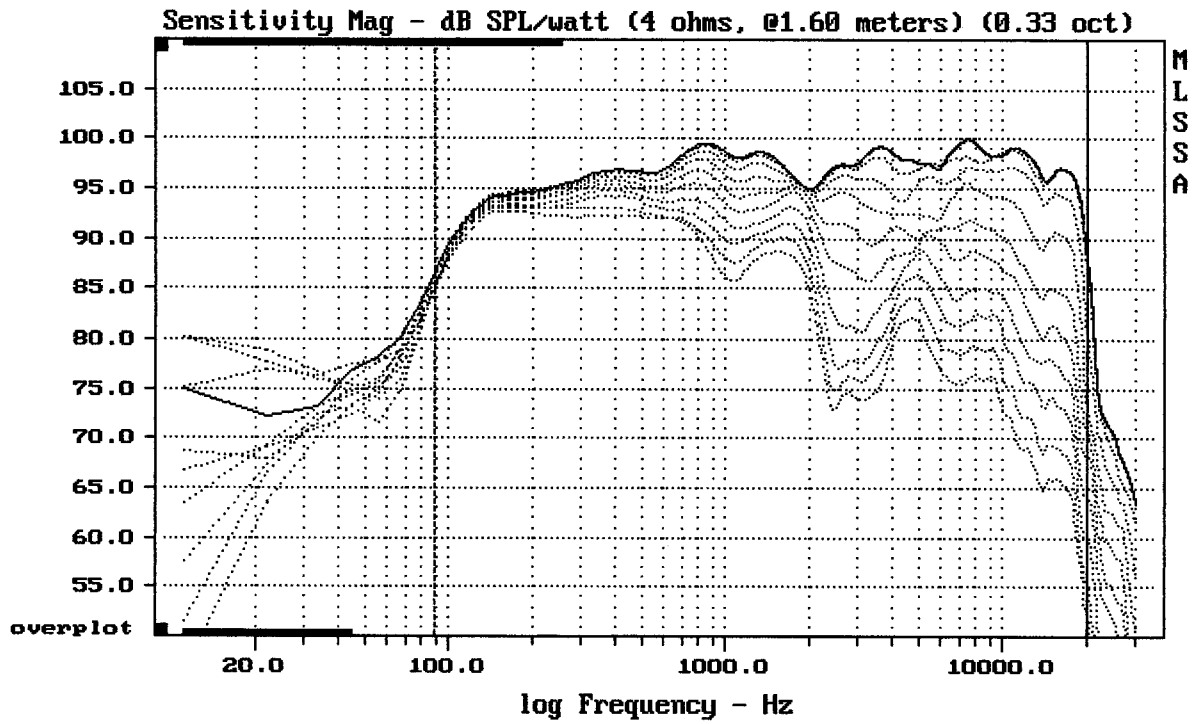
2xBETA 8 + DE10 + ME10

MLSSA: Frequency Domain



Level (89:19997 Hz) = 97.33 dB SPL/watt (4 ohms, @1.60 meters) (0.33 oct)

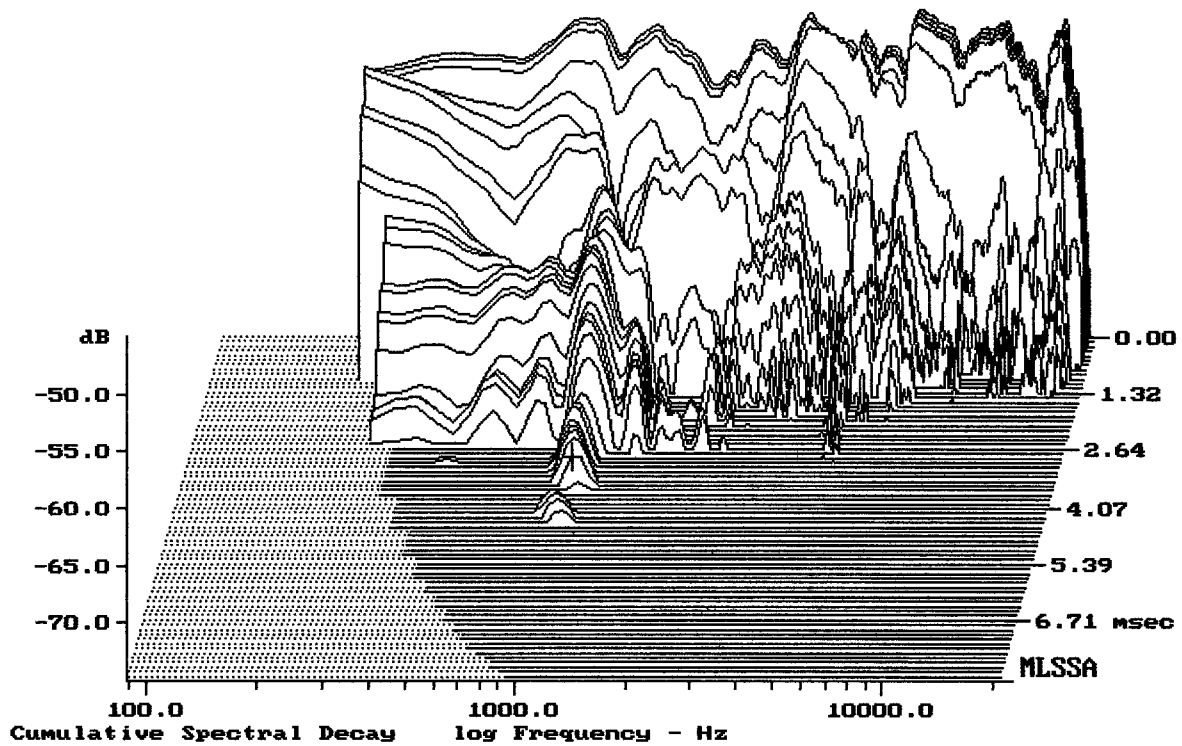
2xBETA 8 + DE10 + ME10



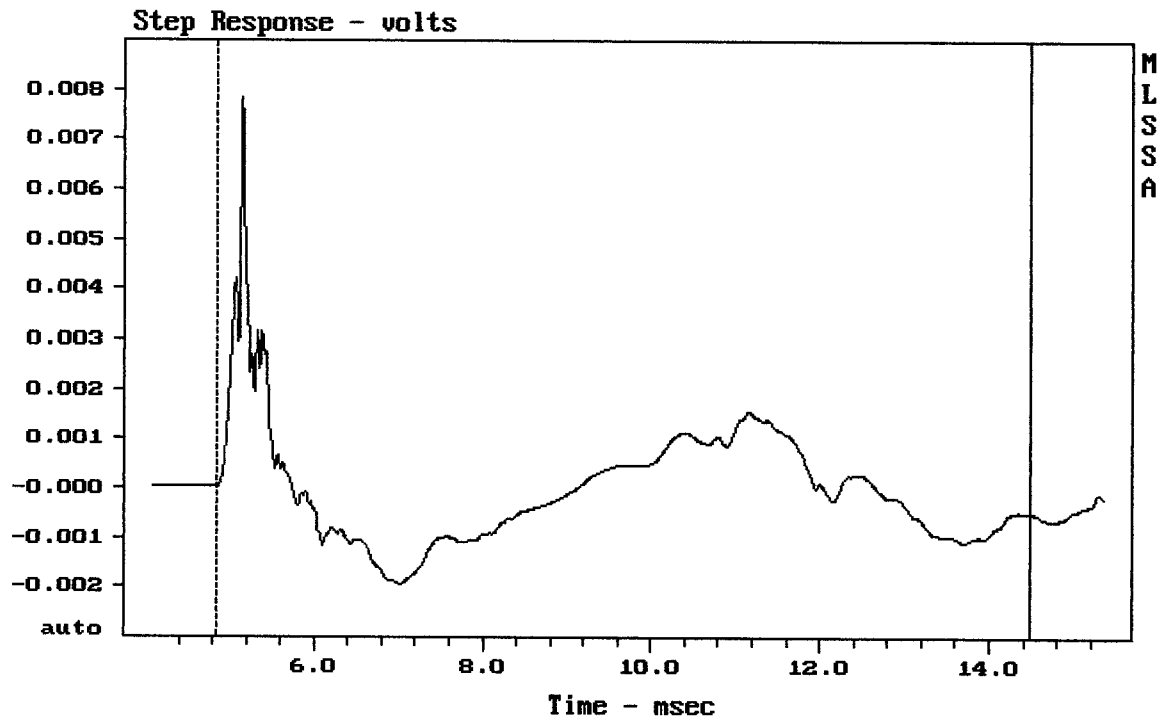
Overlay Compare: dev= +24/-13, std= 7.9, avg= -25

2xBETA 8 + DE10 + ME10

MLSSA: Frequency Domain



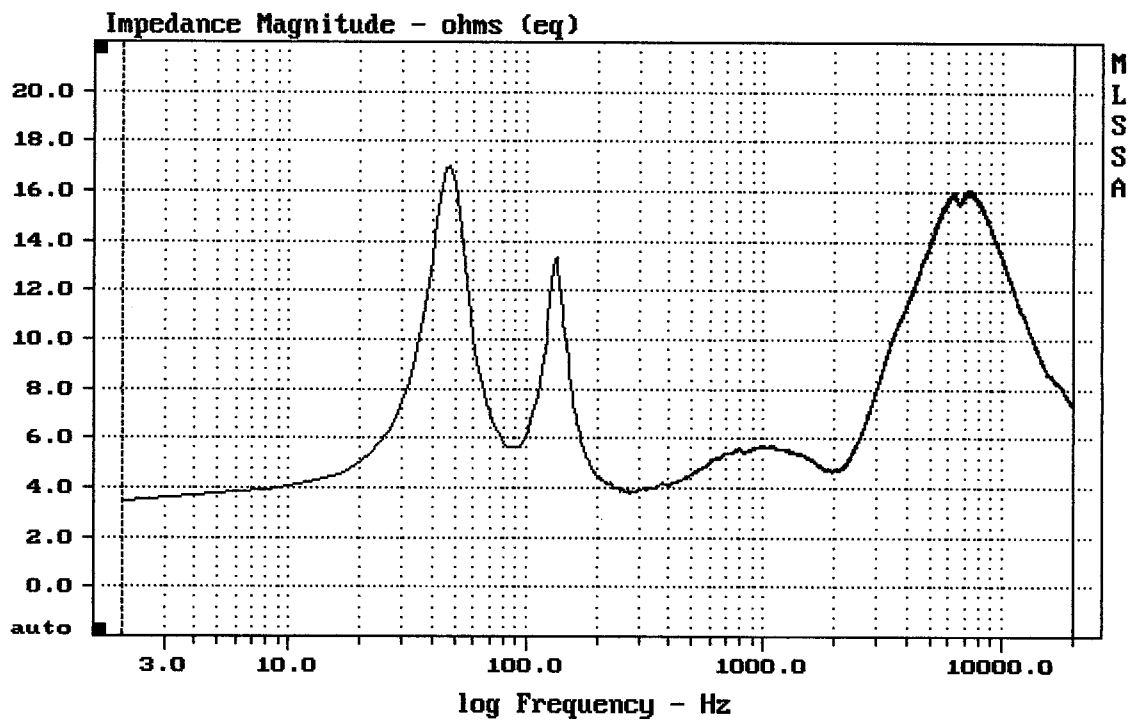
-72.47 dB, 1021 Hz (23), 3.520 msec (33)



mean: $-1.608e-005$, rms: 0.001192, std: 0.001192, max: 0.00785, min: -0.001939

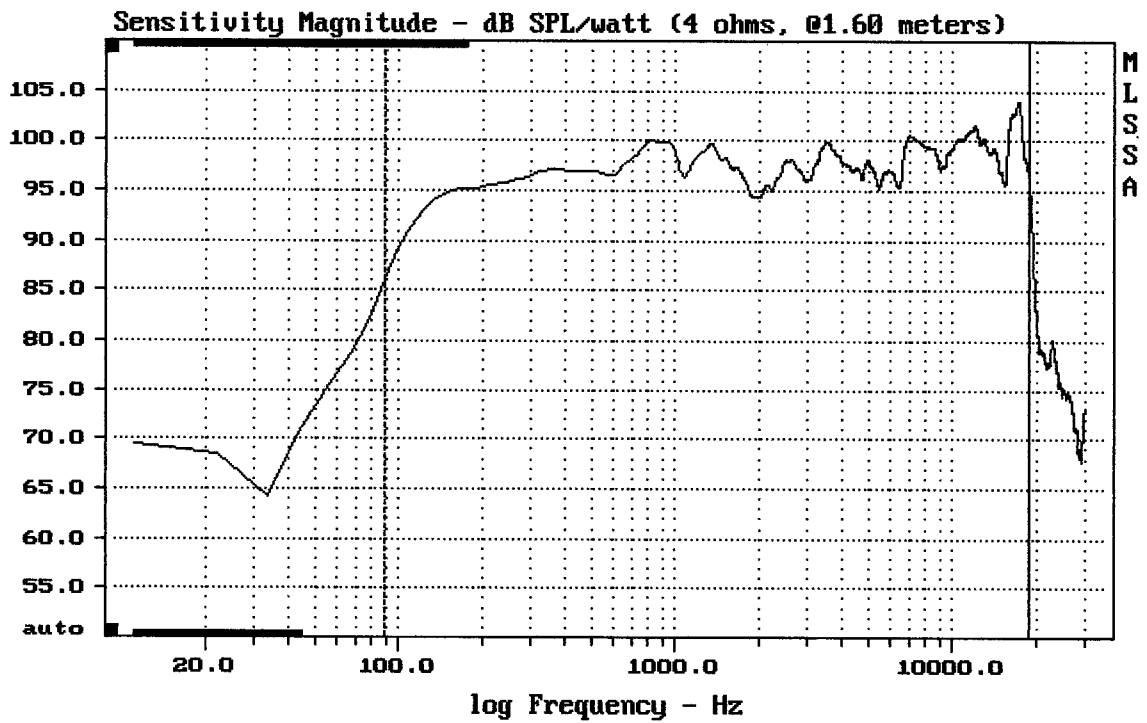
2xBETA 8 + DE10 + ME10

MLSSA: Time Domain



mean: 10.51, rms: 11.05, std: 3.408, max: 16.98, min: 3.48

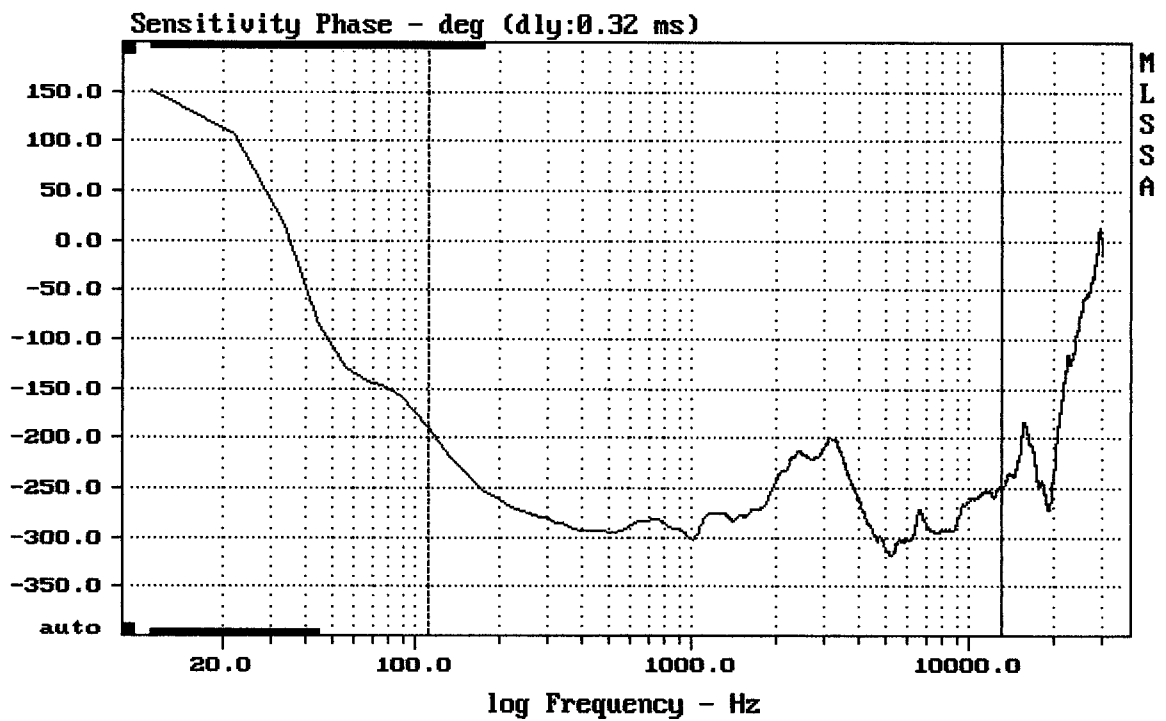
2xBETA 8 + DE10 + ME10



mean: 99.03, rms: 99.29, std: 1.94, max: 104.02, min: 86.12

2xBETA 8 + DE10 + ME10

MLSSA: Frequency Domain



mean: -269.7, rms: 271.1, std: 27.55, max: -189.8, min: -317.9

2xBETA 8 + DE10 + ME10