

Sestava B&C Speakers 10HPL64 + DE12 + ME10

Osazení:

- B&C Speakers 10HPL64 8/Ohm

<http://eshop.prodance.cz/DetailPage.asp?DPG=82621>

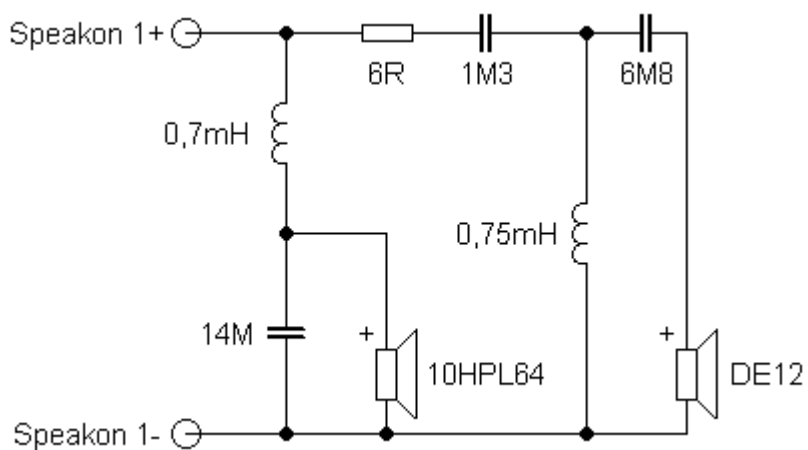
- B&C Speakers DE12 8/Ohm

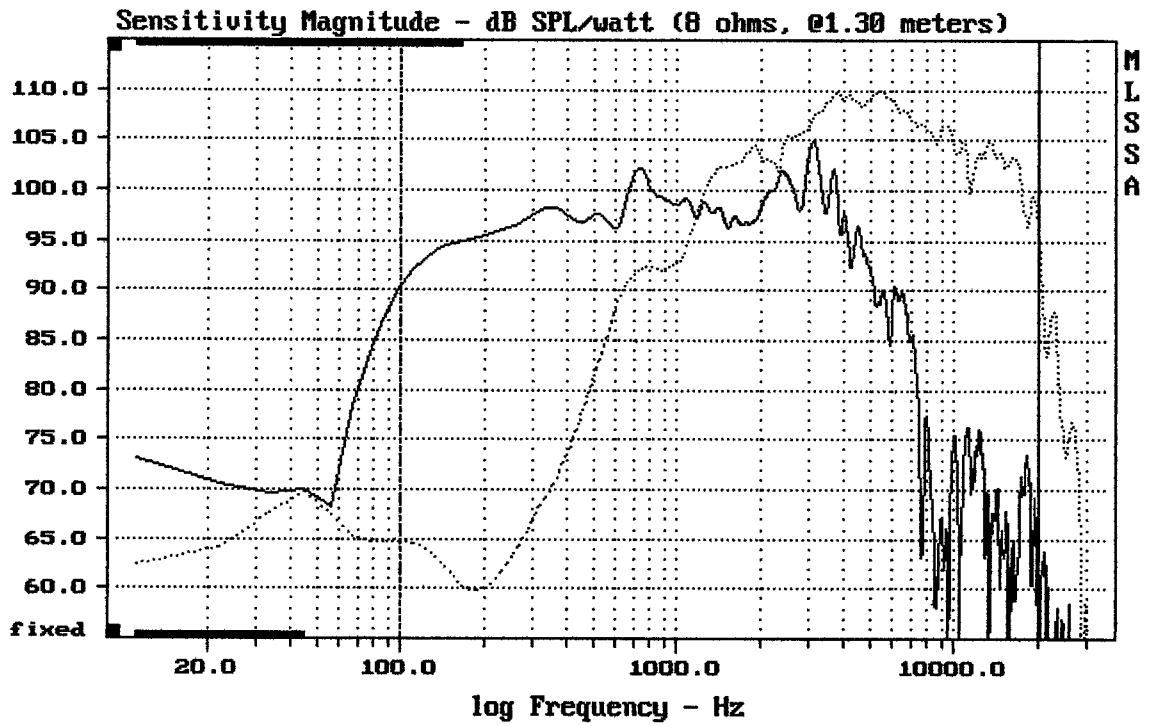
<http://eshop.prodance.cz/DetailPage.asp?DPG=82296>

- B&C Speakers ME10

<http://eshop.prodance.cz/DetailPage.asp?DPG=79956>

Schéma výhybky:

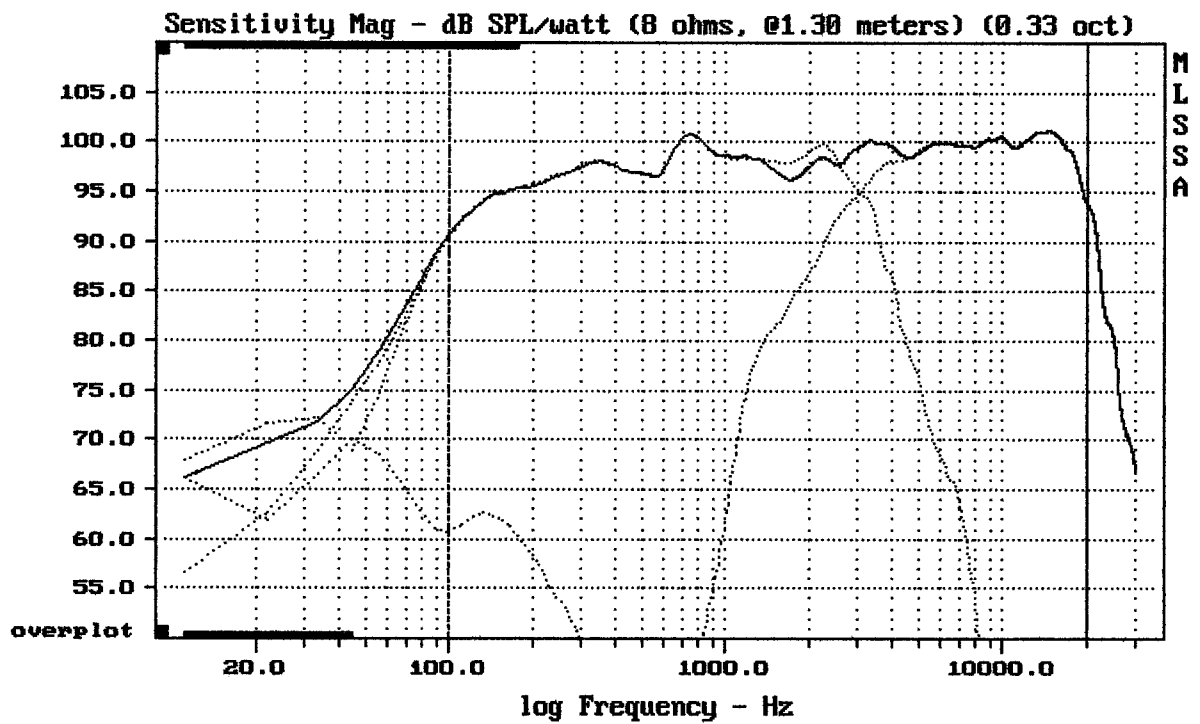




CURSOR: dy = 41.4264 x = 19997.3360 (1802)

10HPL64 + DE12 + ME10

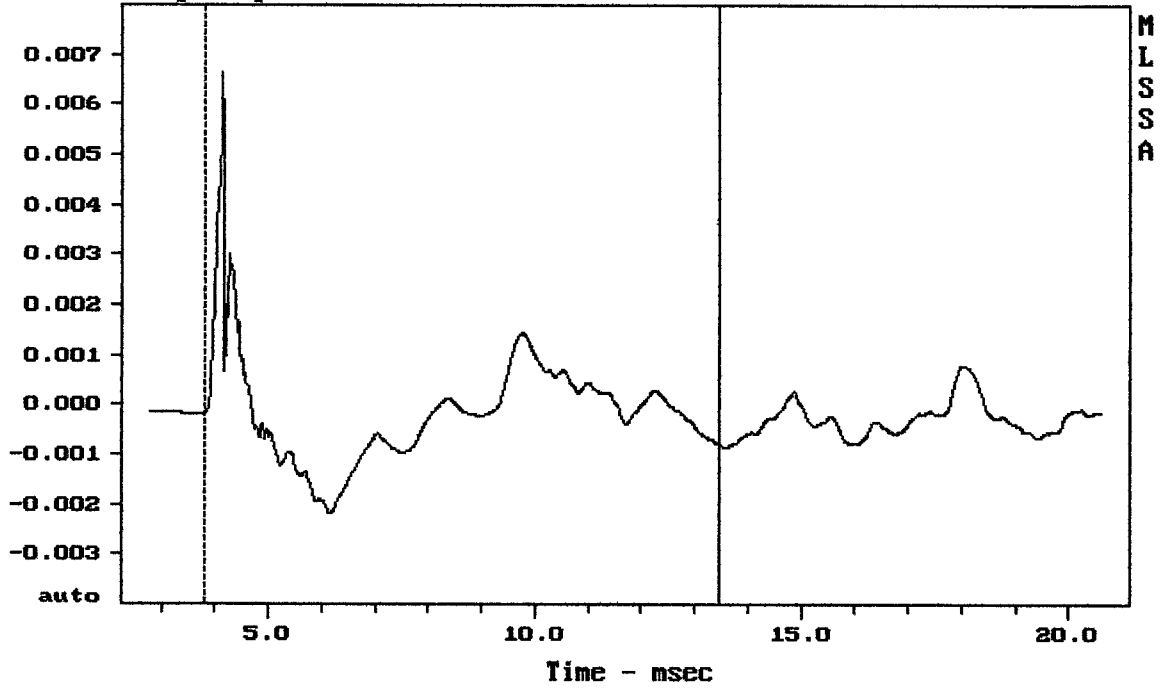
MLSSA: Frequency Domain



Level (100:19997 Hz) = 98.41 dB SPL/watt (8 ohms, @1.30 meters) (0.33 oct)

10HPL64 + DE12 + ME10

Step Response - volts

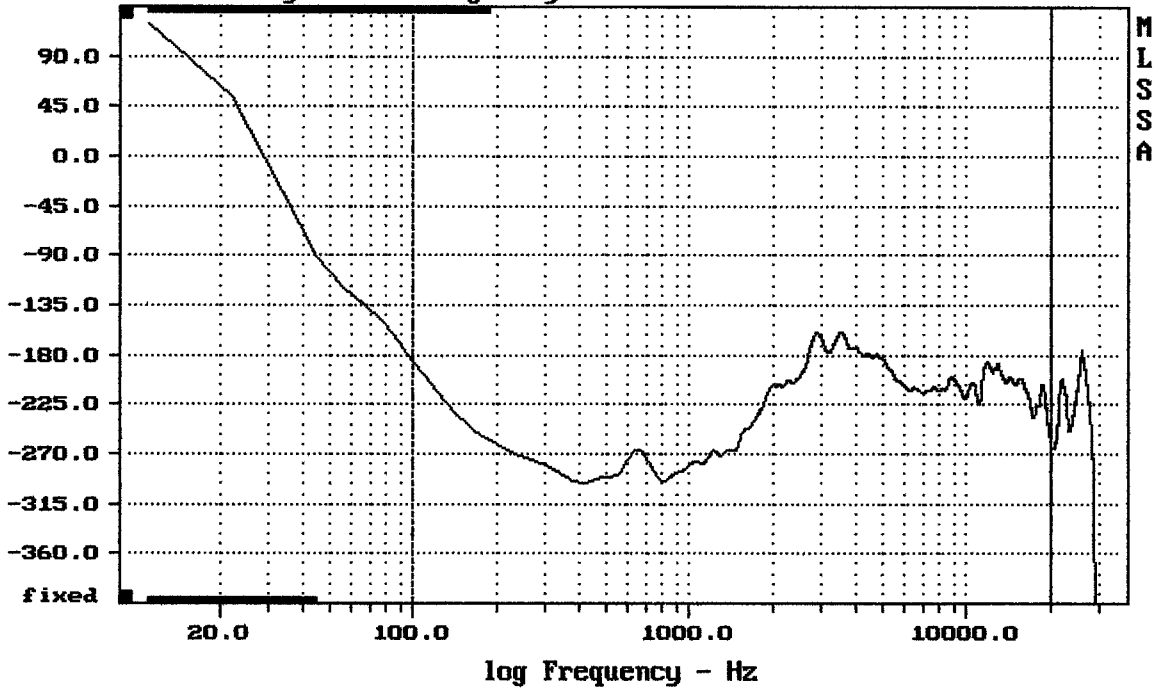


mean: -0.0001256, rms: 0.00109, std: 0.001083, max: 0.006621, min: -0.002172

10HPL64 + DE12 + ME10

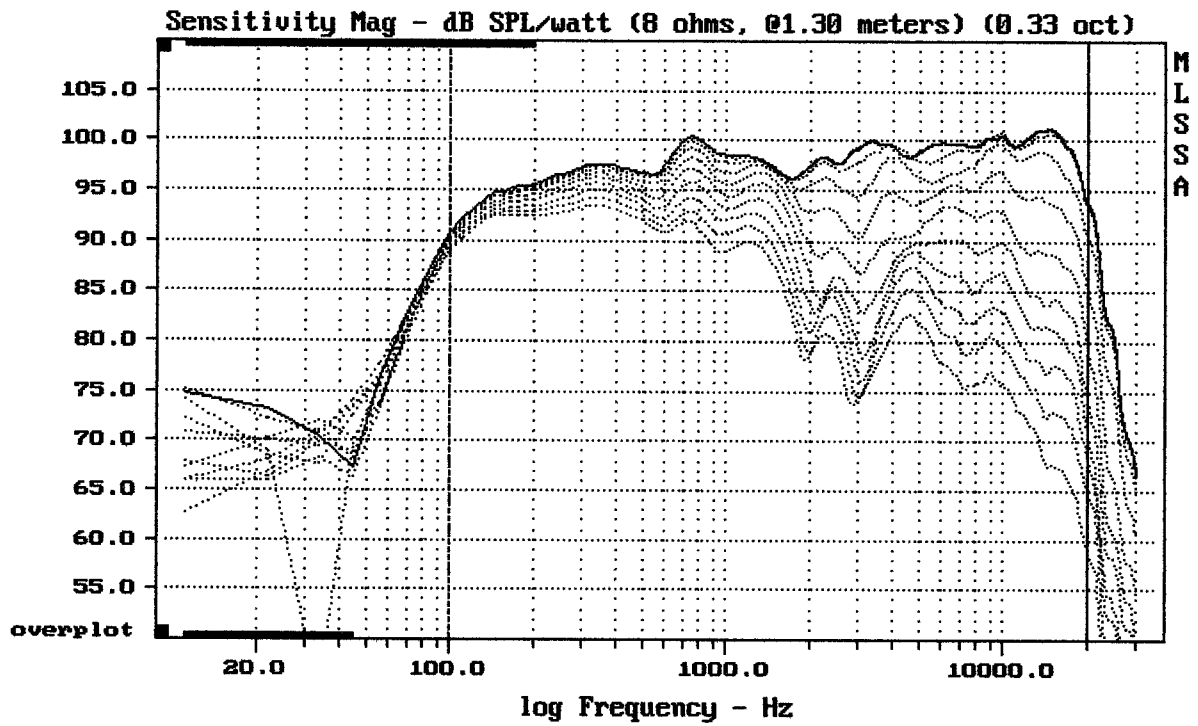
MLSSA: Time Domain

Sensitivity Phase - deg (dly:0.36 ms)



mean: -210.5, rms: 212, std: 25.3, max: -159.7, min: -296.1

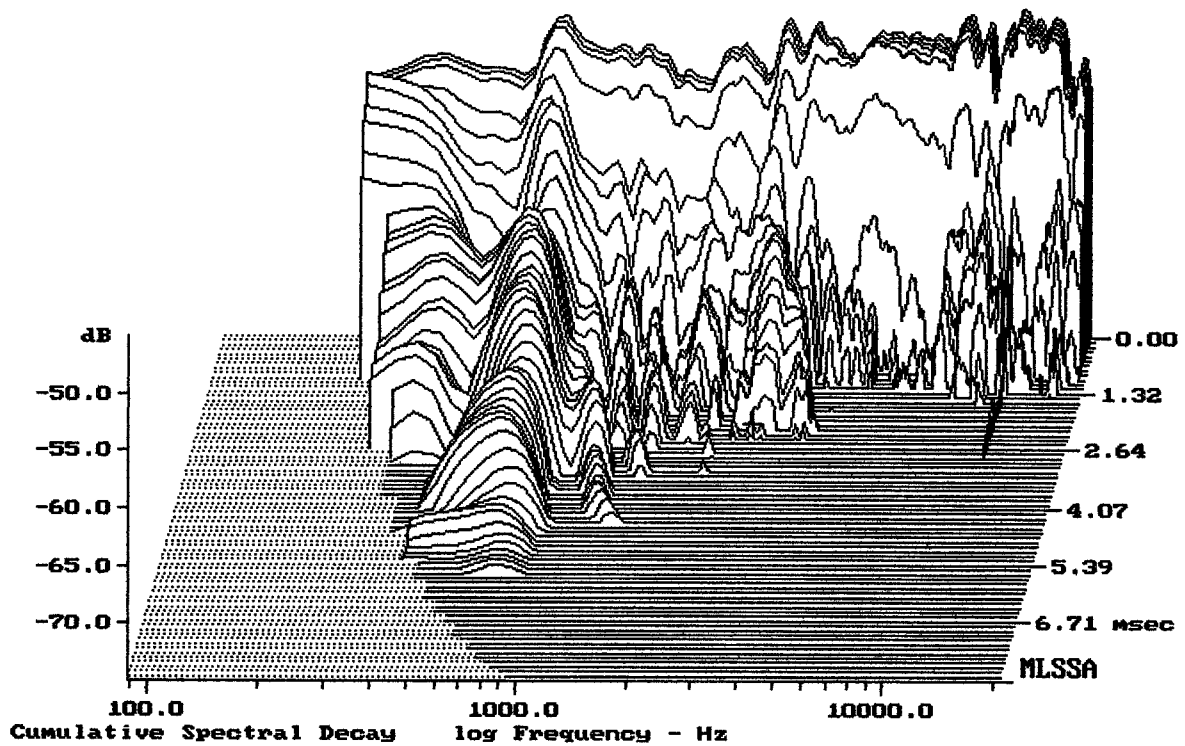
10HPL64 + DE12 + ME10



Overlay Compare: dev= +24/-9.7, std= 7.7, avg= -25

10HPL64 + DE12 + ME10

MLSSA: Frequency Domain



-73.99 dB, 2885 Hz (65), 2.310 msec (22)