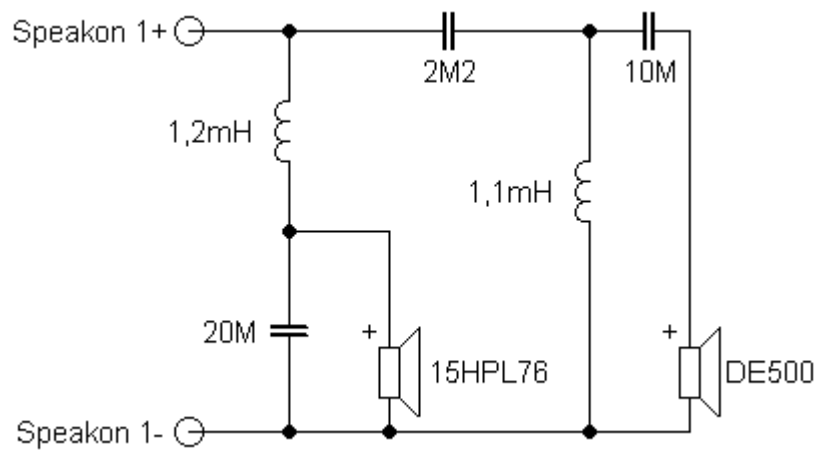


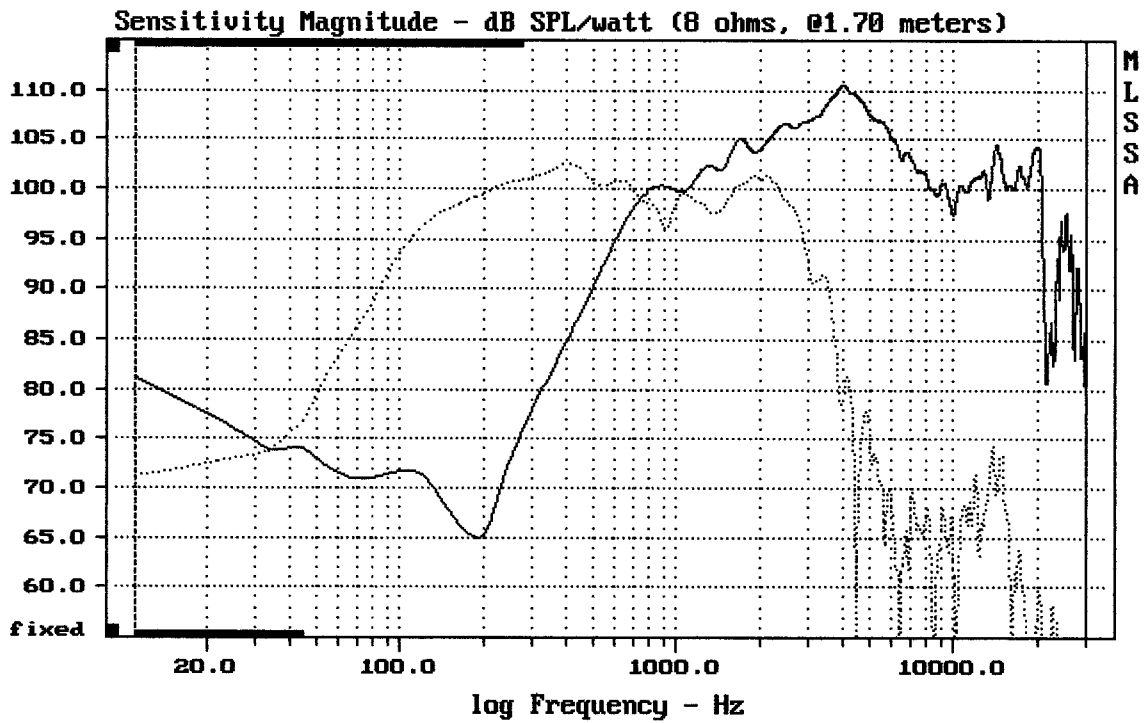
## Sestava B&C Speakers 15HPL76 + DE500 + Megaton A1110

### Osazení:

- B&C Speakers 15HPL76 8/Ohm  
<http://eshop.prodance.cz/DetailPage.asp?DPG=82844>
- B&C Speakers DE500 8/Ohm  
<http://eshop.prodance.cz/DetailPage.asp?DPG=82312>
- Megaton A1110  
<http://eshop.prodance.cz/DetailPage.asp?DPG=87260>

### Schéma výhybky:

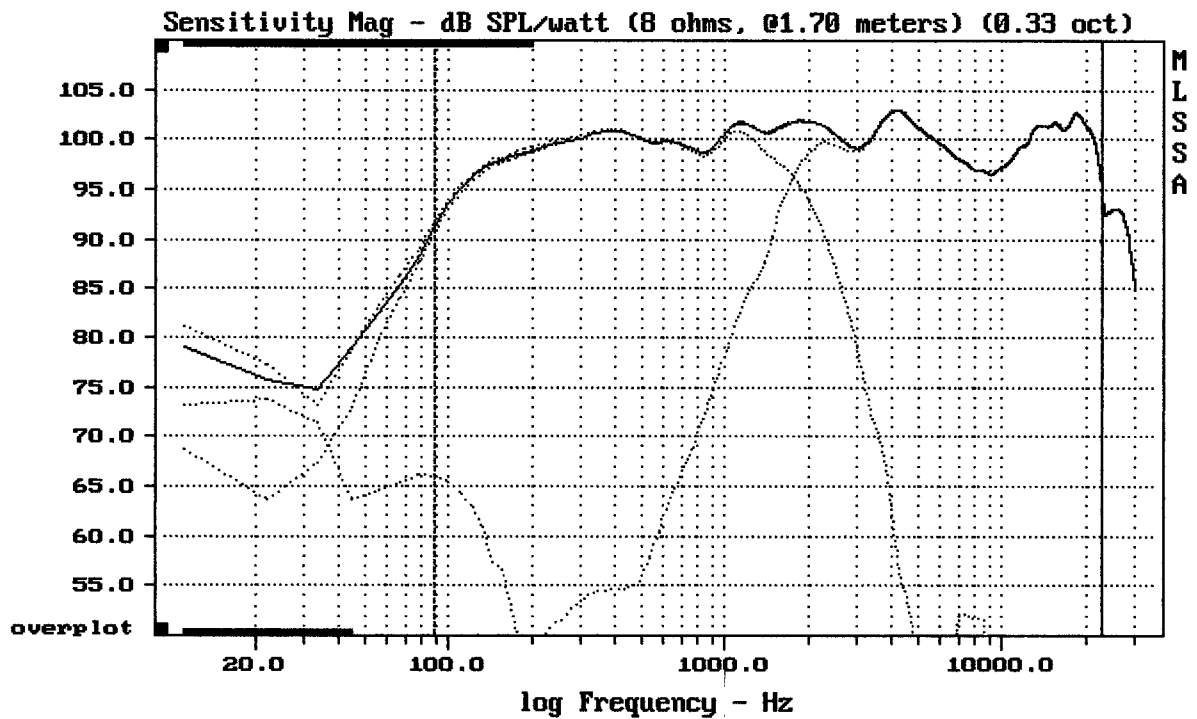




CURSOR: dy = -29.3612 x = 30007.1014 (2704)

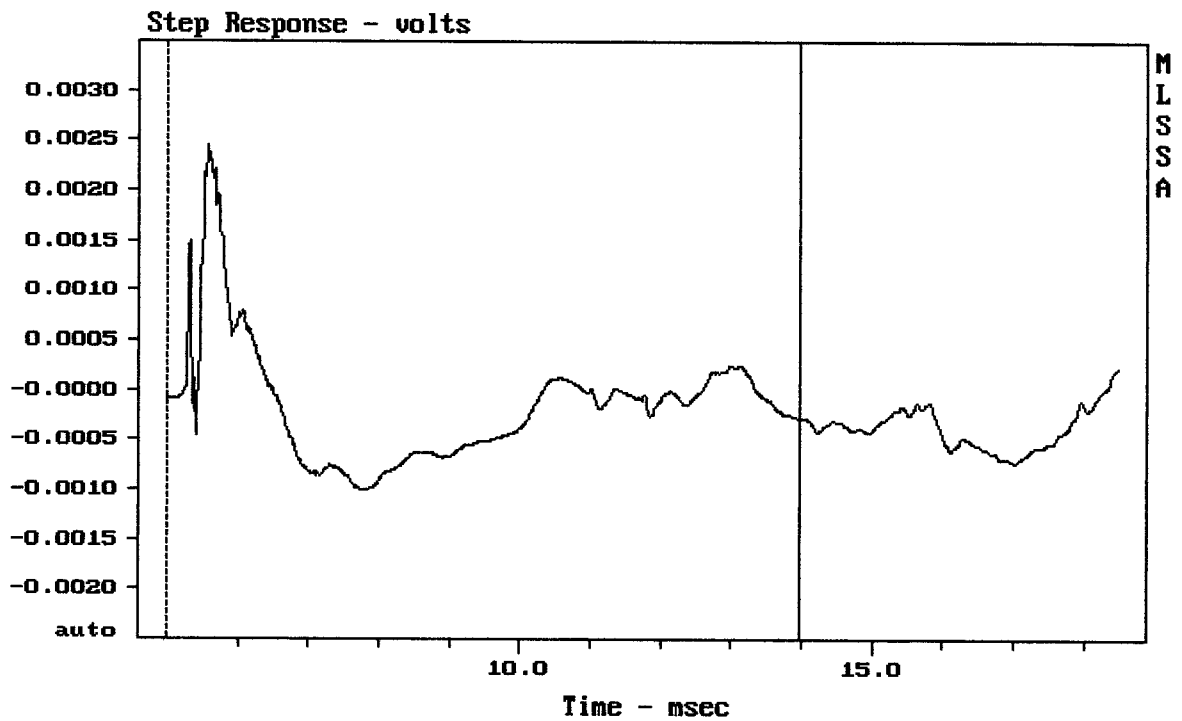
15HPL76 + DE500 + A1110

MLSSA: Frequency Domain



Level (89:23005 Hz) = 100.09 dB SPL/watt (8 ohms, @1.70 meters) (0.33 oct)

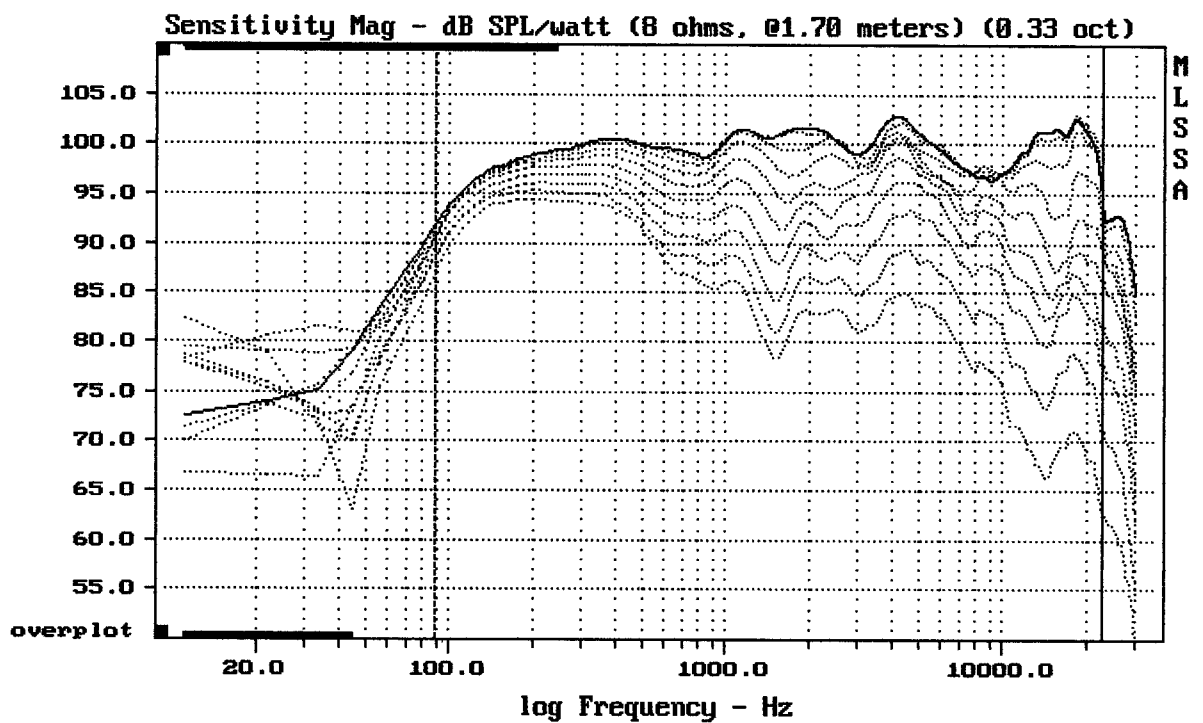
15HPL76 + DE500 + A1110



mean: -0.0001592, rms: 0.0006147, std: 0.0005937, max: 0.002443, min: -0.001005

15HPL76 + DE500 + A1110

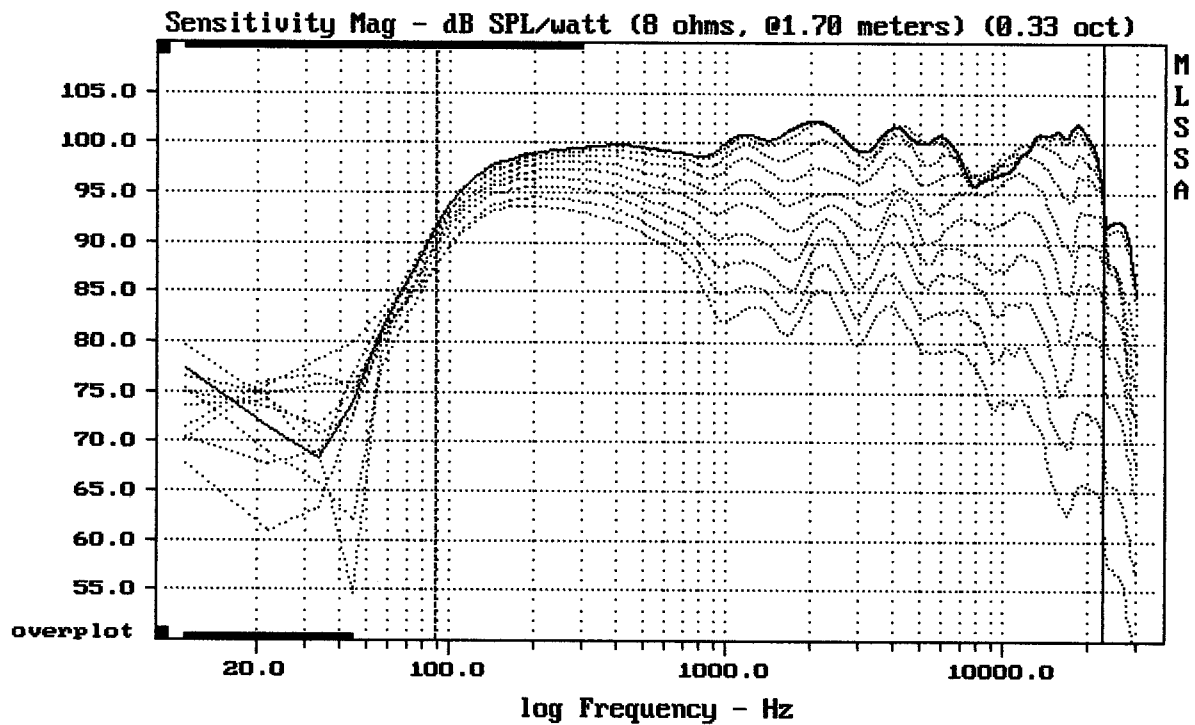
MLSSA: Time Domain



Overlay Compare: dev= +22/-9.5, std= 7.5, avg= -25

15HPL76 + DE500 + A1110

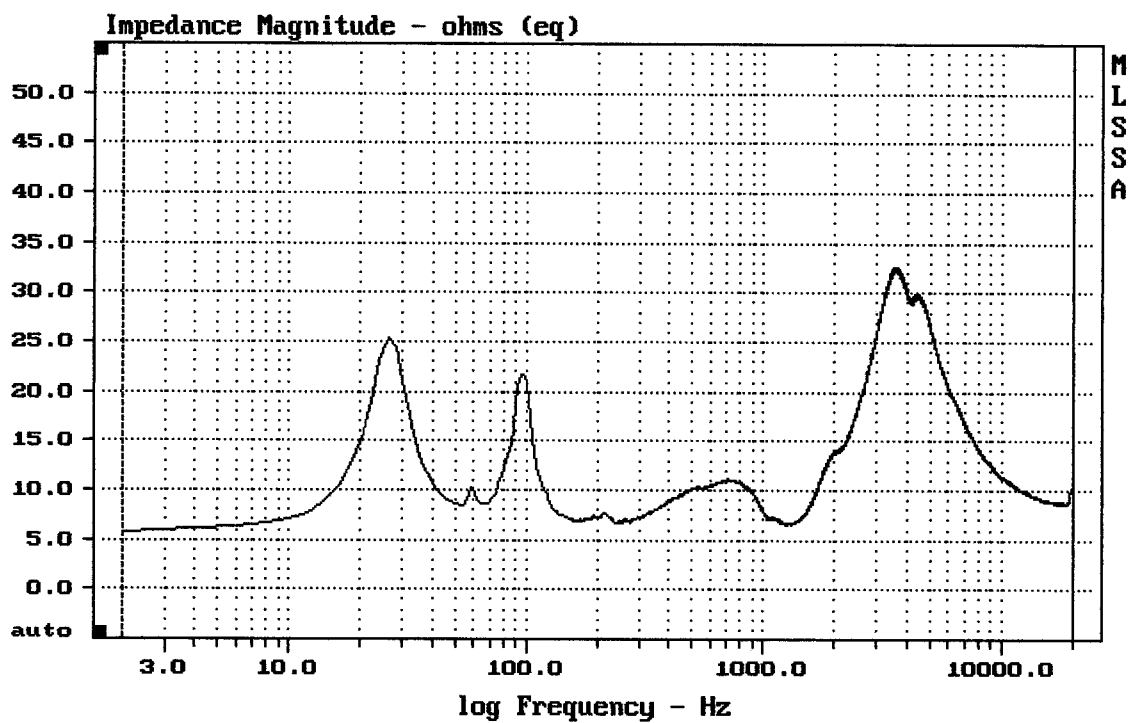
horna na výšku



Overlay Compare: dev= +23/-12, std= 8, avg= -27

15HPL76 + DE500 + A1110

MLSSA: Frequency Domain



mean: 13.71, rms: 15.3, std: 6.801, max: 32.65, min: 5.629

15HPL76 + DE500 + A1110

horna naležato