

Sestava Eminence Beta-15 + Selenium DT150

Osazení:

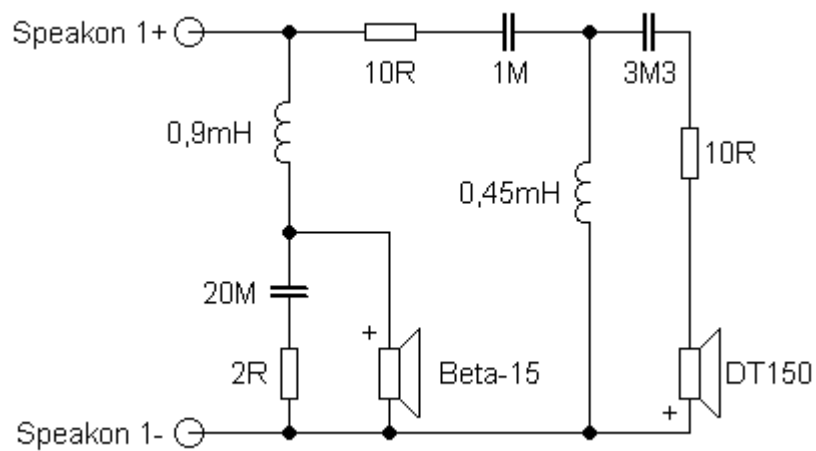
- Eminence Beta-15 8/Ohm

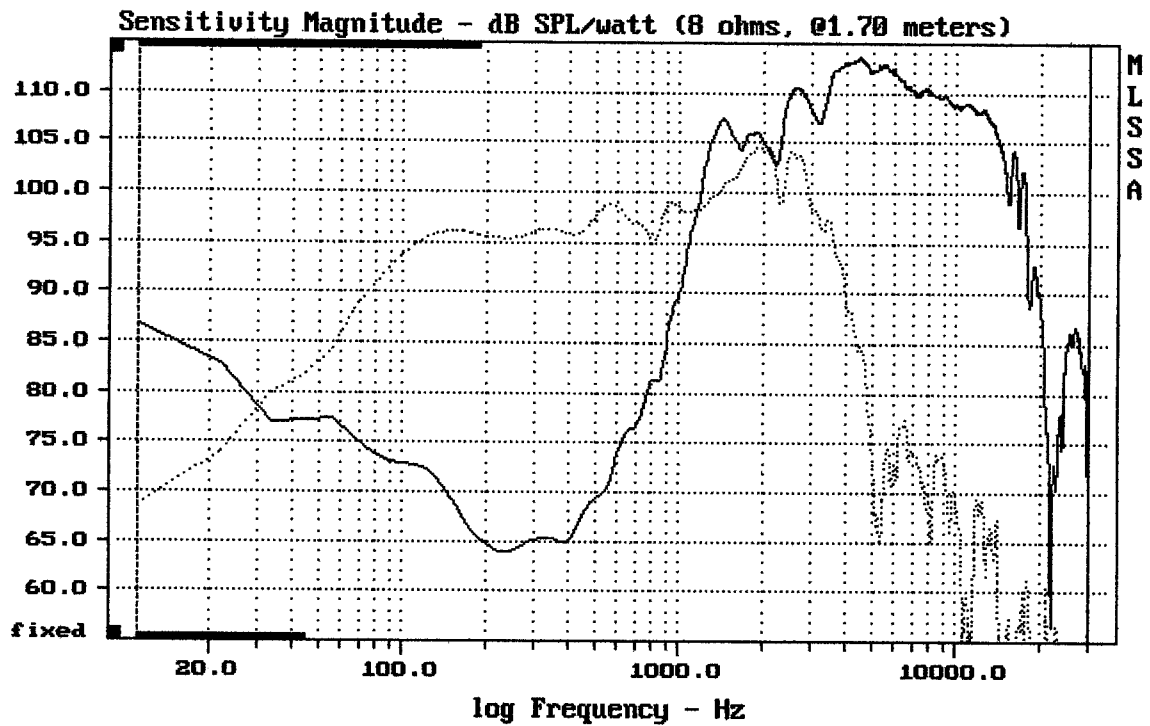
<http://eshop.prodance.cz/DetailPage.asp?DPG=84340>

- Selenium DT150 8/Ohm

<http://eshop.prodance.cz/DetailPage.asp?DPG=82055>

Schéma výhybky:

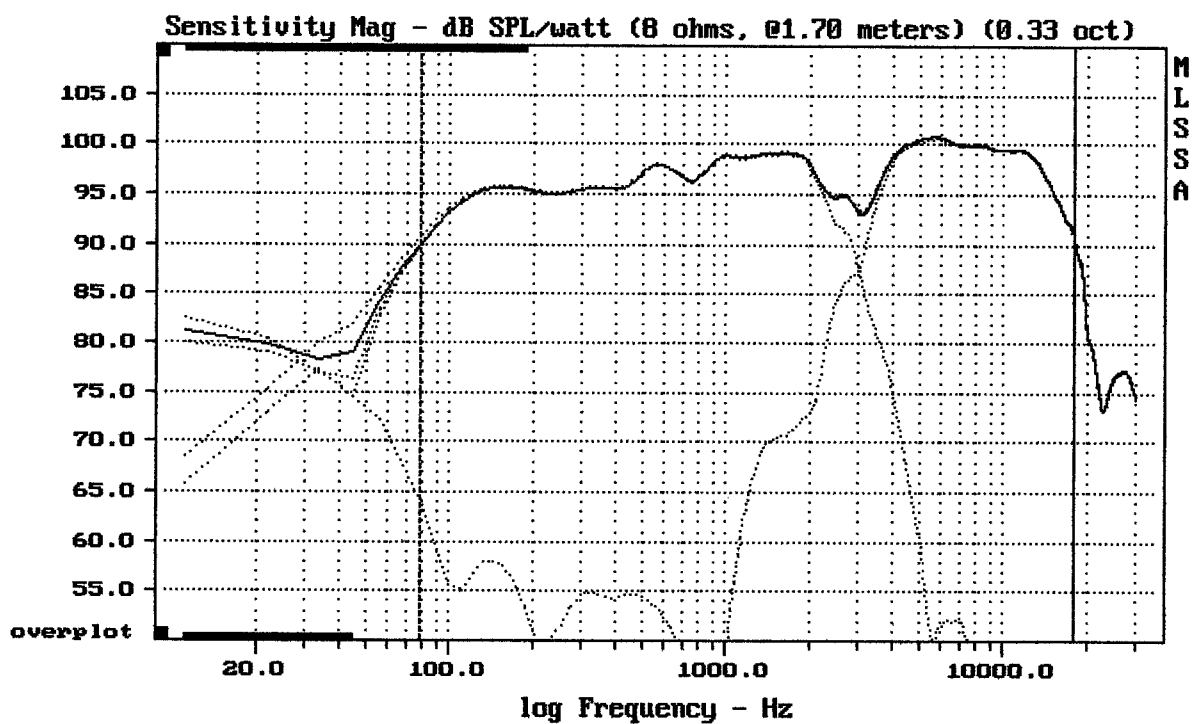




CURSOR: $dy = -39.4903$ $x = 30007.1014$ (2704)

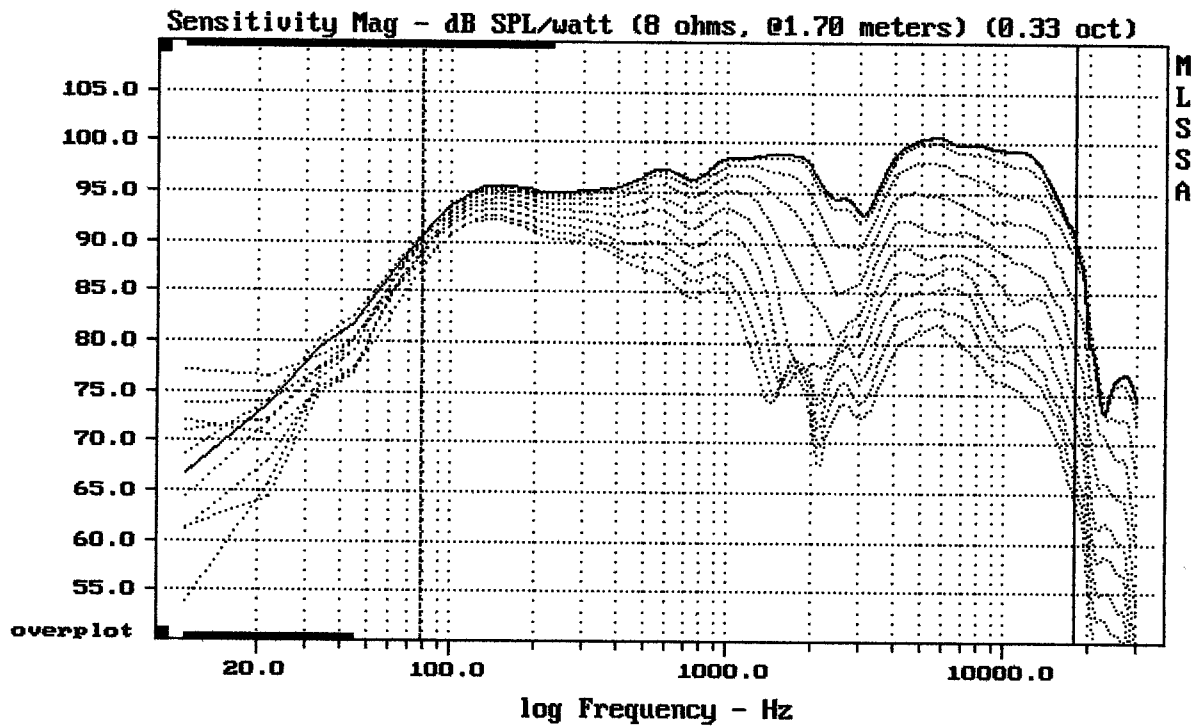
EMINENCE BETA 15 + SELENIUM DT150

MLSSA: Frequency Domain



Level (78:18033 Hz) = 97.45 dB SPL/watt (8 ohms, @1.70 meters) (0.33 oct)

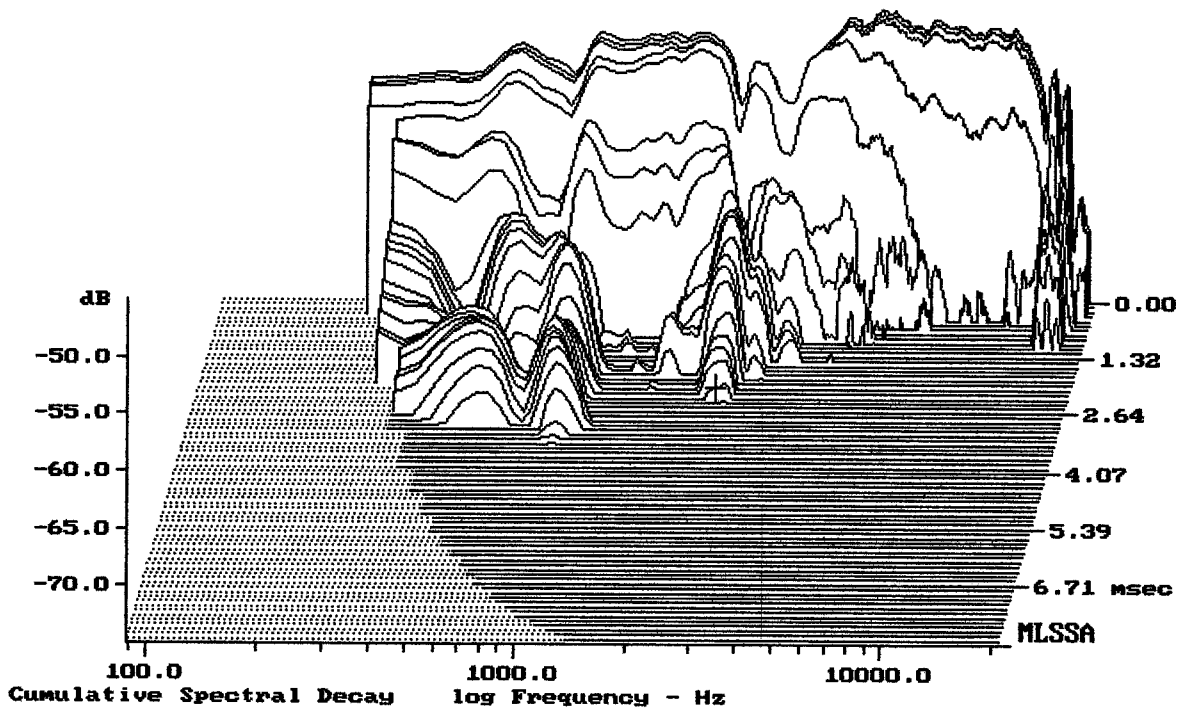
EMINENCE BETA 15 + SELENIUM DT150



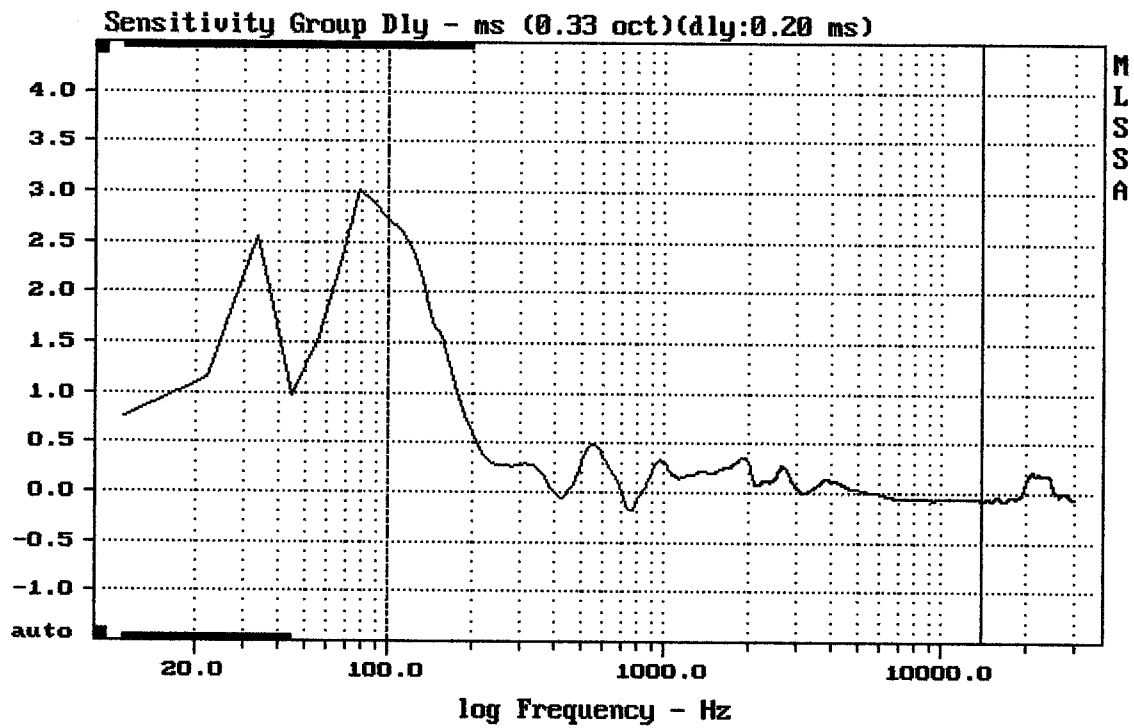
Overlay Compare: dev= +19/-6.6, std= 3.9, avg= -22

EMINENCE BETA 15 + SELENIUM DT150

MLSSA: Frequency Domain



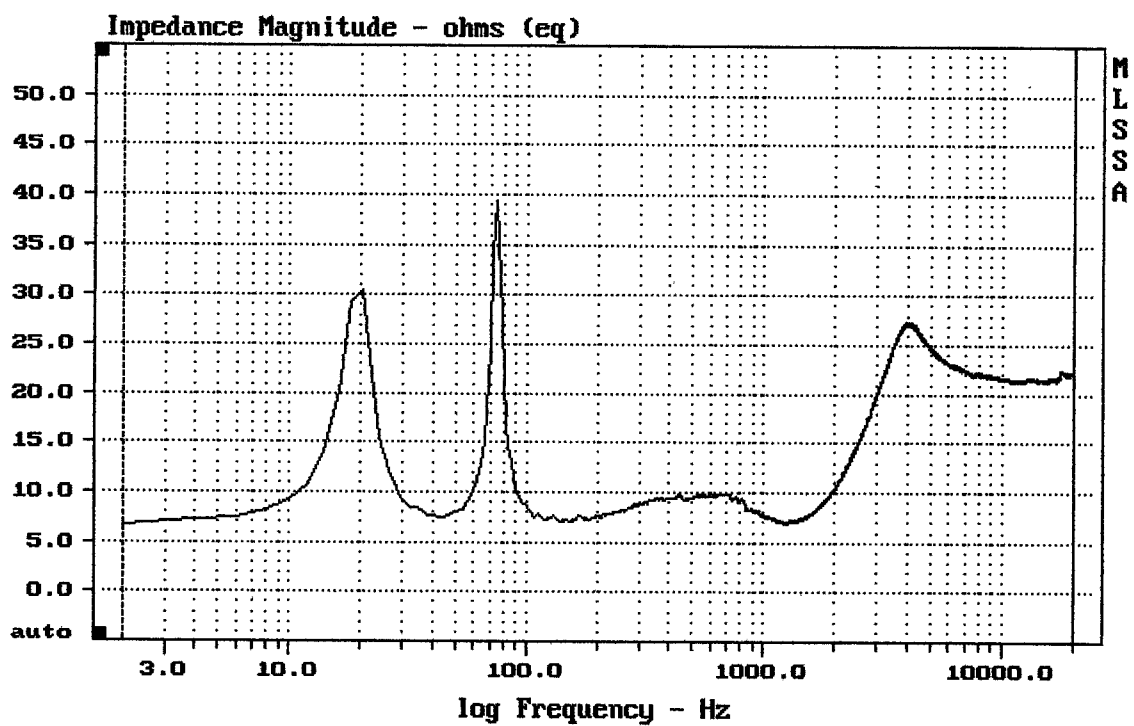
-74.12 dB, 2308 Hz (52), 2.310 msec (22)



mean: 0.02937, rms: 0.1984, std: 0.1962, max: 2.718, min: -0.1812

EMINENCE BETA 15 + SELENIUM DT150

MLSSA: Frequency Domain



mean: 20.6, rms: 21.1, std: 4.559, max: 39.44, min: 6.714

EMINENCE BETA 15 + SELENIUM DT150