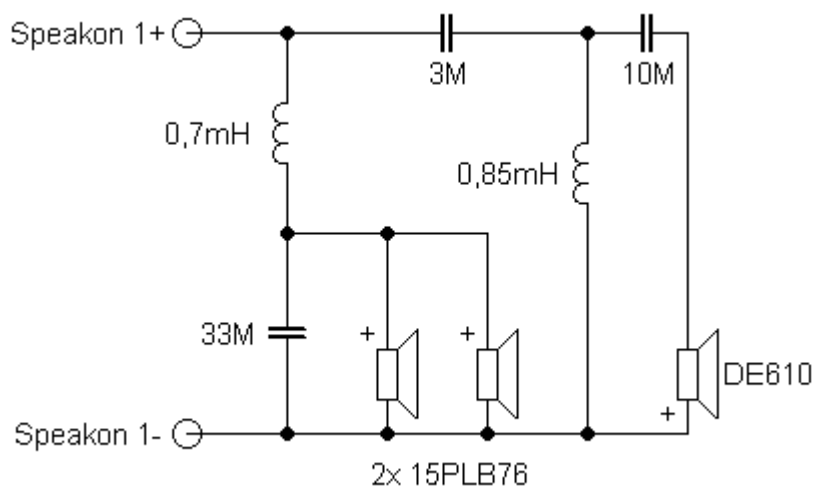


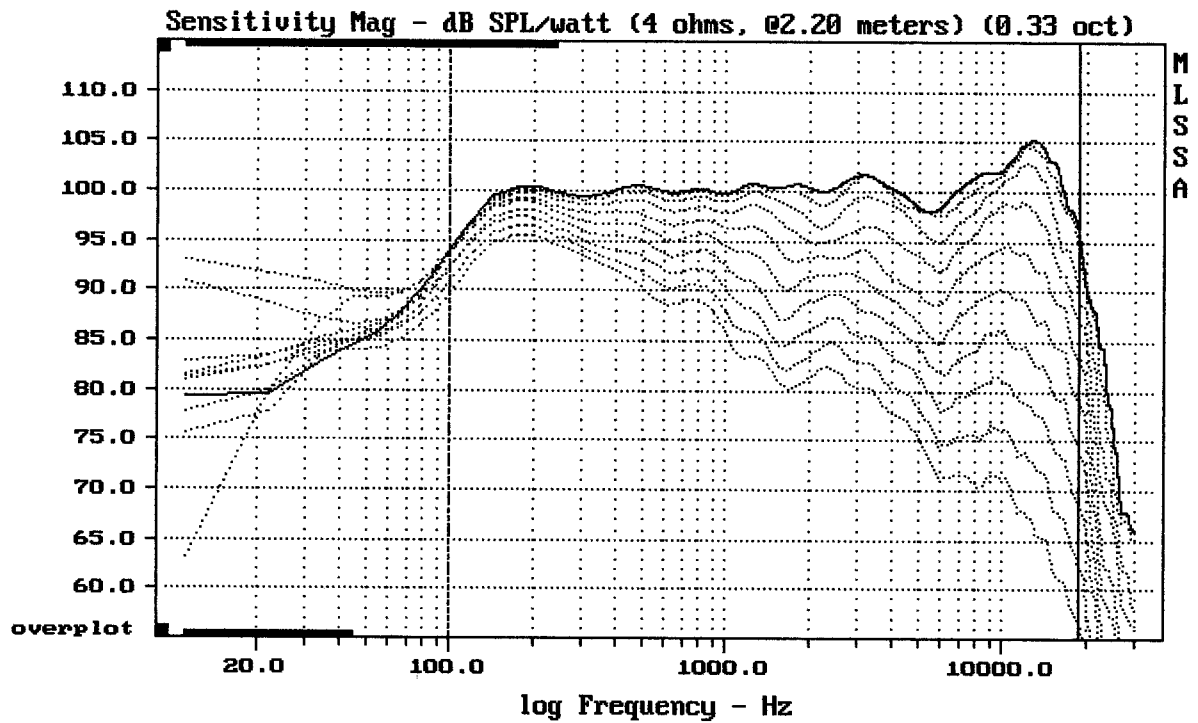
Sestava 2x B&C Speakers 15PLB76 + DE610 + ME90

Osazení:

- 2x B&C Speakers 15PLB76 8/Ohm
<http://eshop.prodance.cz/DetailPage.asp?DPG=82890>
- B&C Speakers DE610 8/Ohm
<http://eshop.prodance.cz/DetailPage.asp?DPG=82315>
- B&C Speakers ME90
<http://eshop.prodance.cz/DetailPage.asp?DPG=80246>

Schéma výhybky:

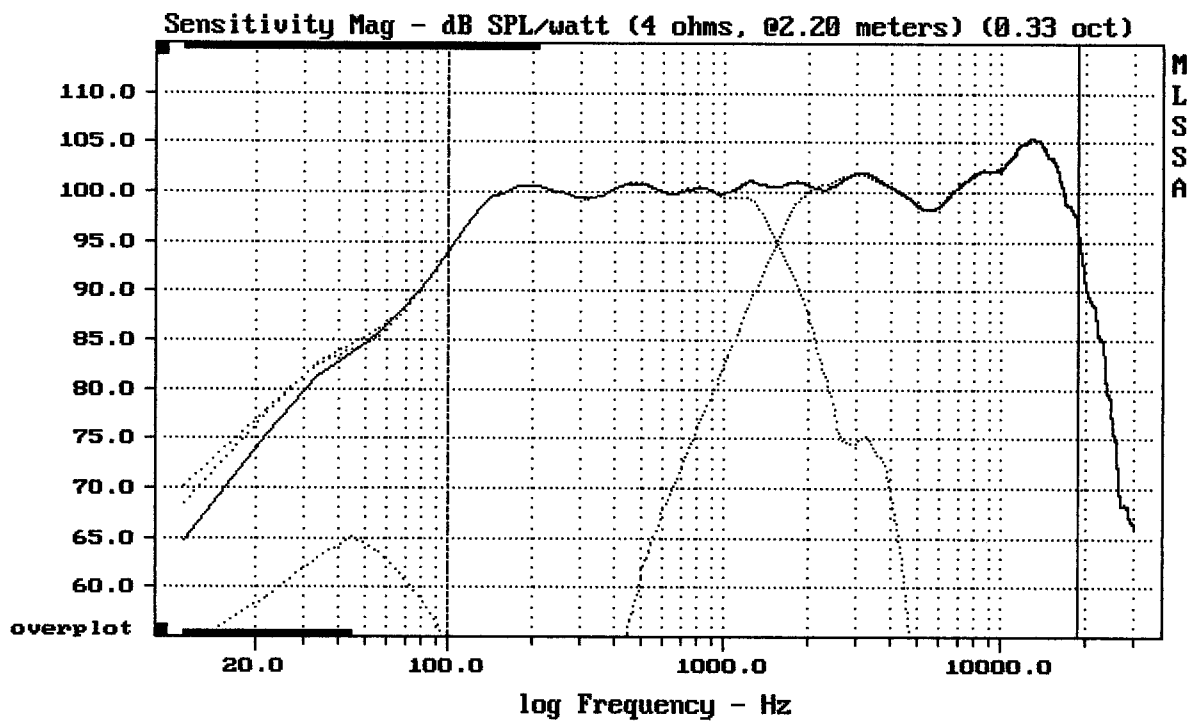




Overlay Compare: dev= +26/-11, std= 8.8, avg= -31

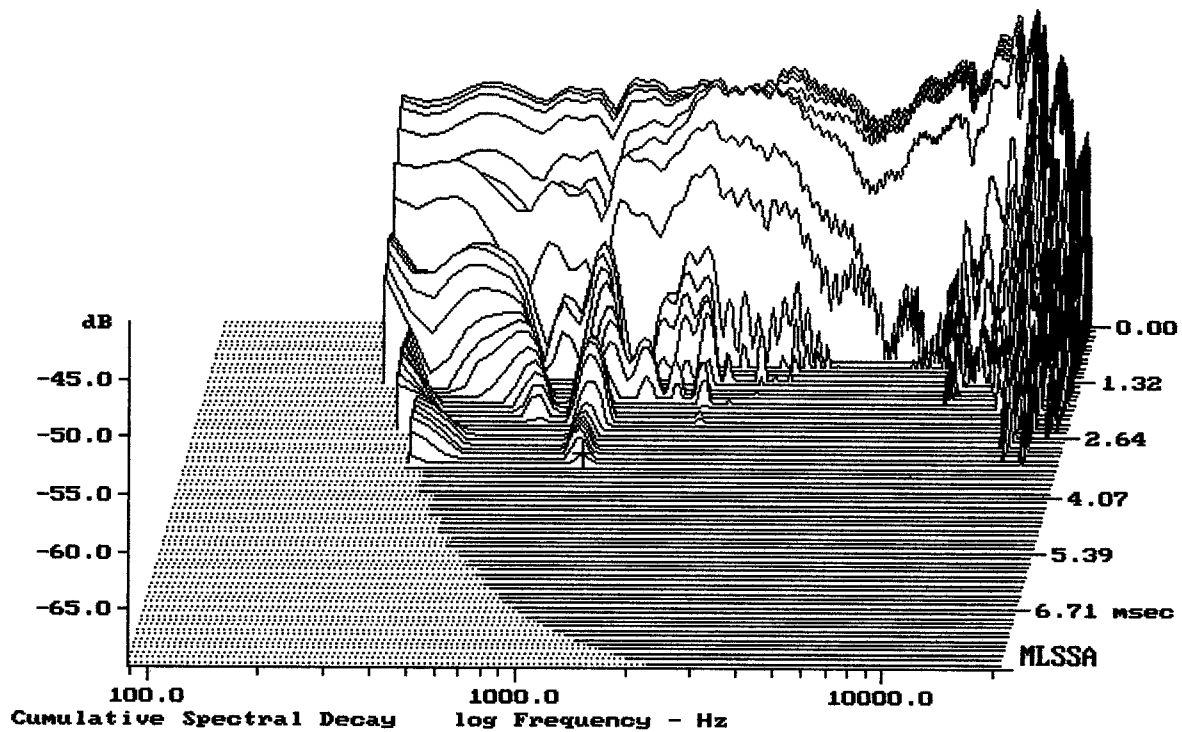
2x 15PLB76+DE610+ME90 otočená o 90°

MLSSA: Frequency Domain



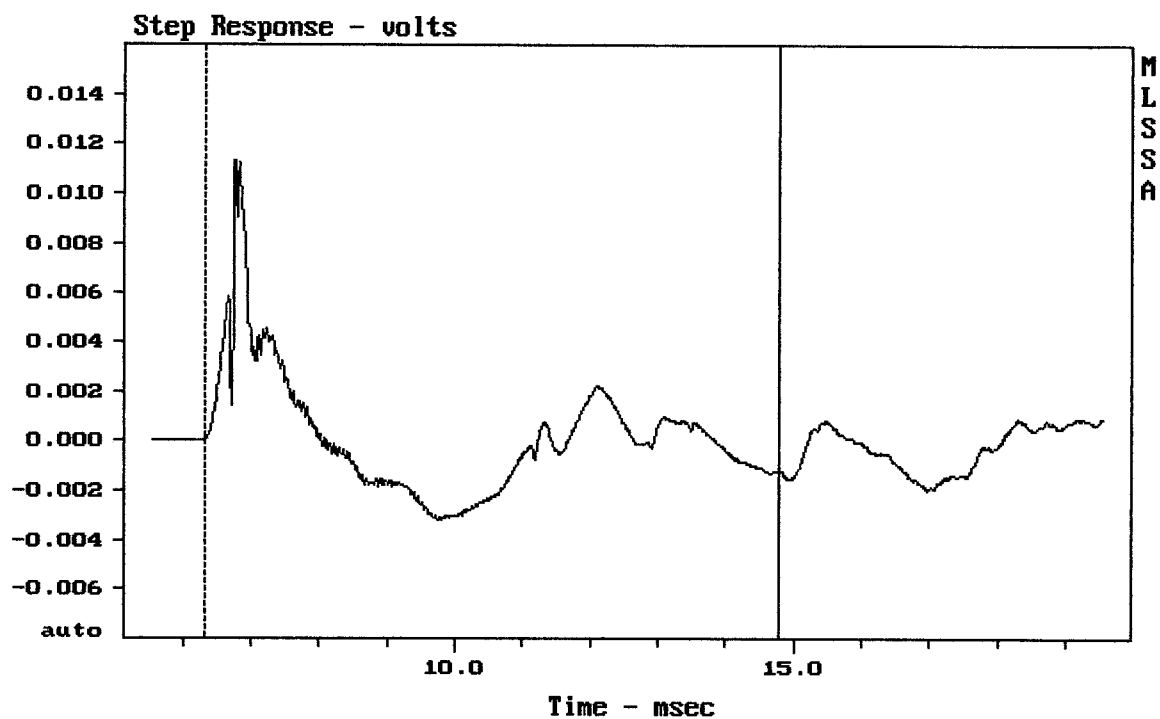
Level (100:18999 Hz) = 100.78 dB SPL/watt (4 ohms, @2.20 meters) (0.33 oct)

2x 15PLB76+DE610+ME90 otočená o 90°



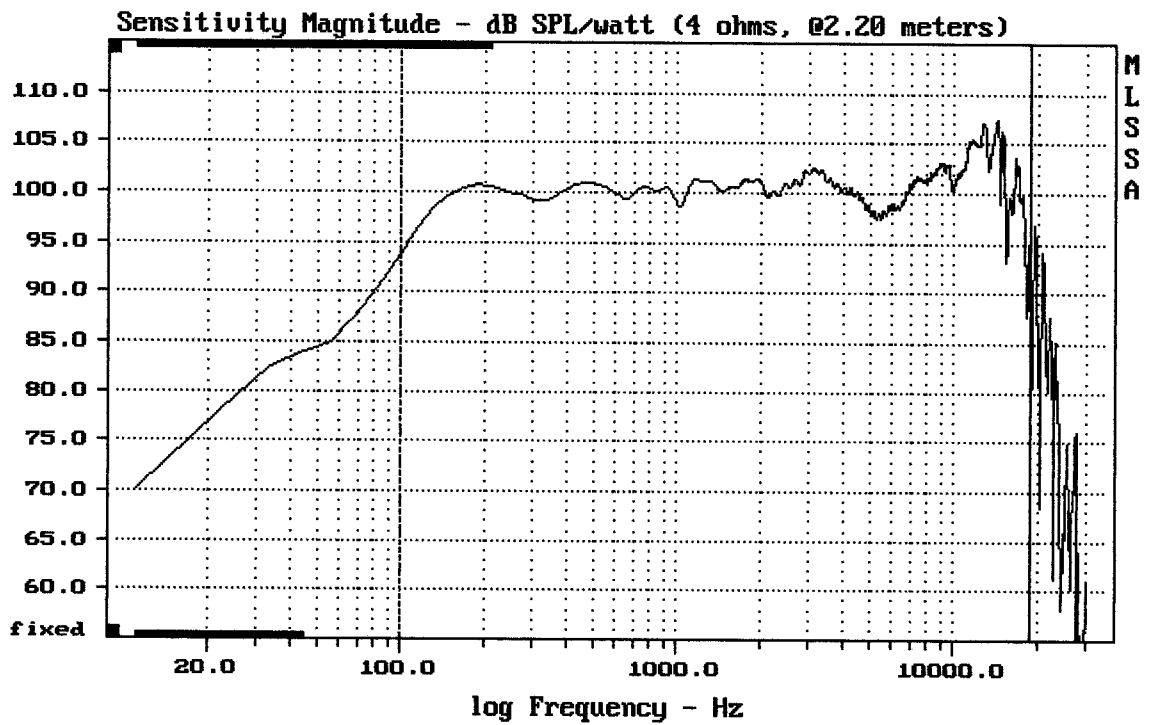
-69.17 dB, 1065 Hz (24), 3.300 msec (31)

dtto



mean: 0.0001248, rms: 0.002384, std: 0.00238, max: 0.01133, min: -0.003186

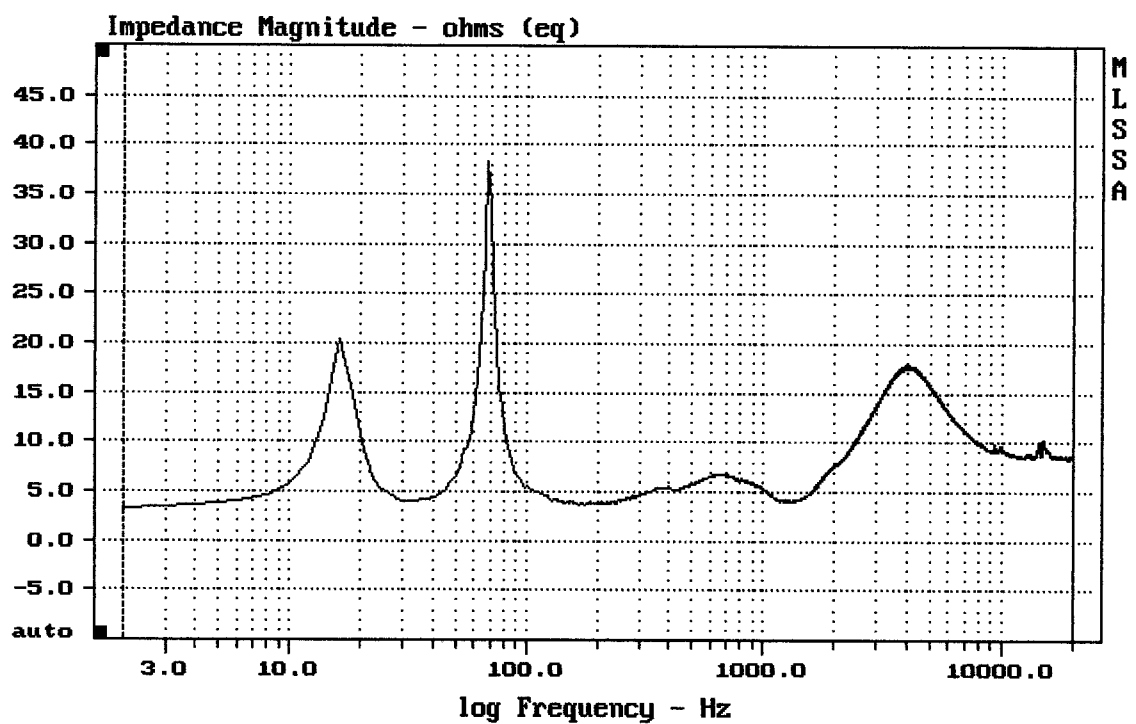
2x 15PLB76+DE610+ME90 otočená o 90°



mean: 101.52, rms: 102.04, std: 2.64, max: 107.49, min: 77.80

2x 15PLB76+DE610+ME90 otočená o 90°

MLSSA: Frequency Domain



mean: 9.945, rms: 10.39, std: 3.015, max: 38.29, min: 3.272

2x 15PLB76+DE610+ME90 otočená o 90°