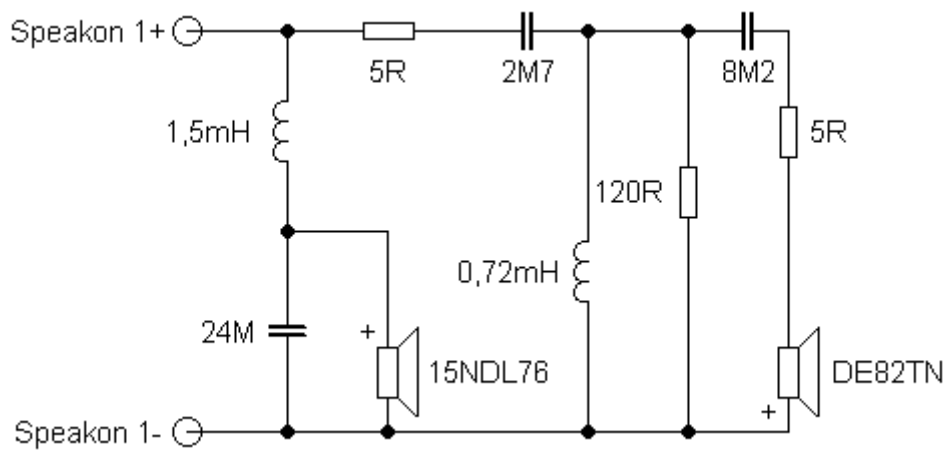


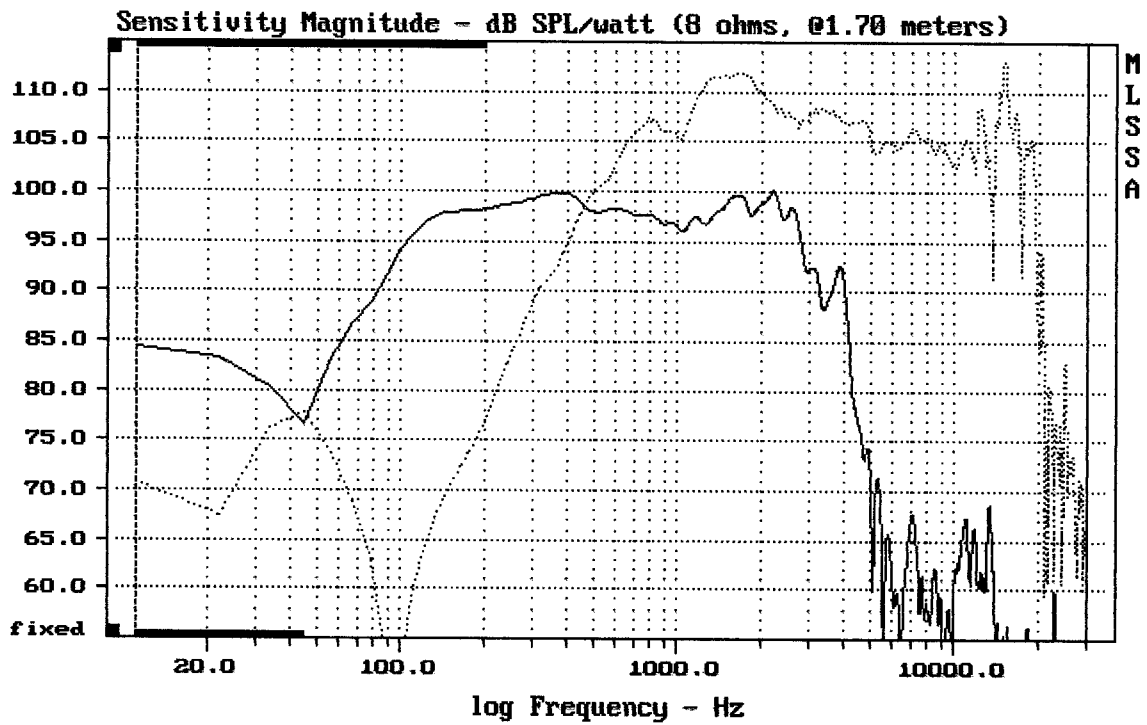
## Sestava B&C Speakers 15NDL76 + DE82TN + ME90

### Osazení:

- B&C Speakers 15NDL76 8/Ohm  
<http://eshop.prodance.cz/DetailPage.asp?DPG=82860>
- B&C Speakers DE82TN 8/Ohm  
<http://eshop.prodance.cz/DetailPage.asp?DPG=92772>
- B&C Speakers ME90  
<http://eshop.prodance.cz/DetailPage.asp?DPG=80246>

### Schéma výhybky:

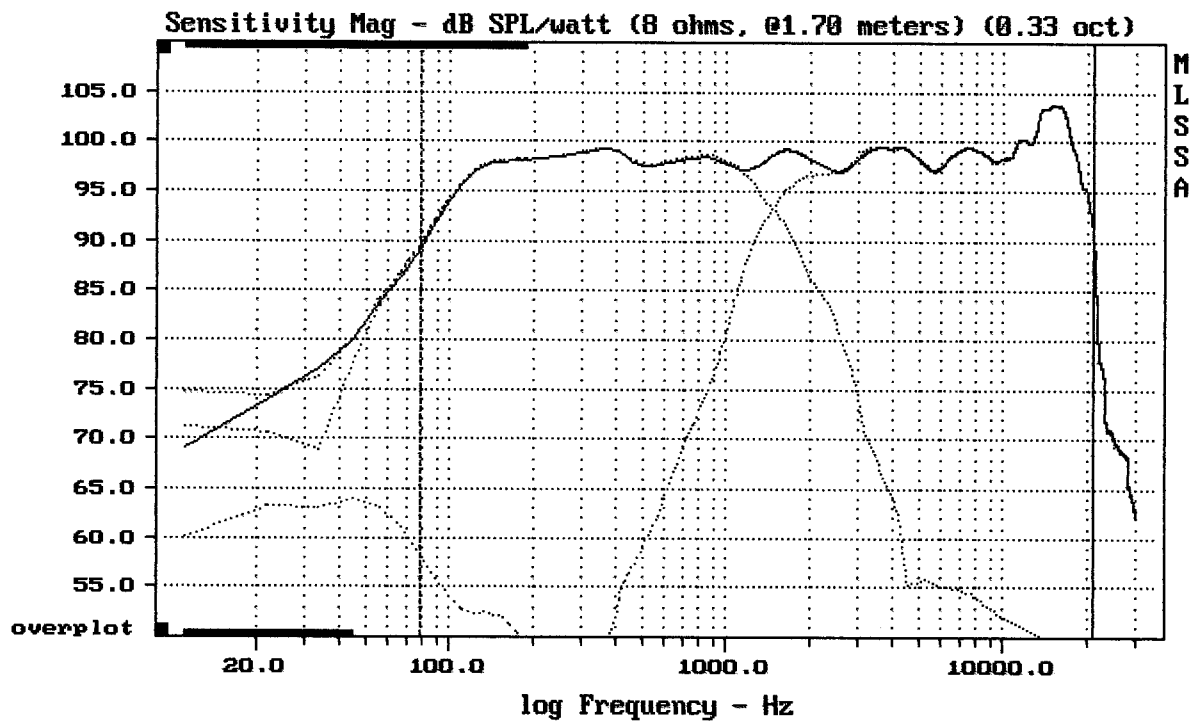




CURSOR: dy = 21.8627 x = 30007.1014 (2704)

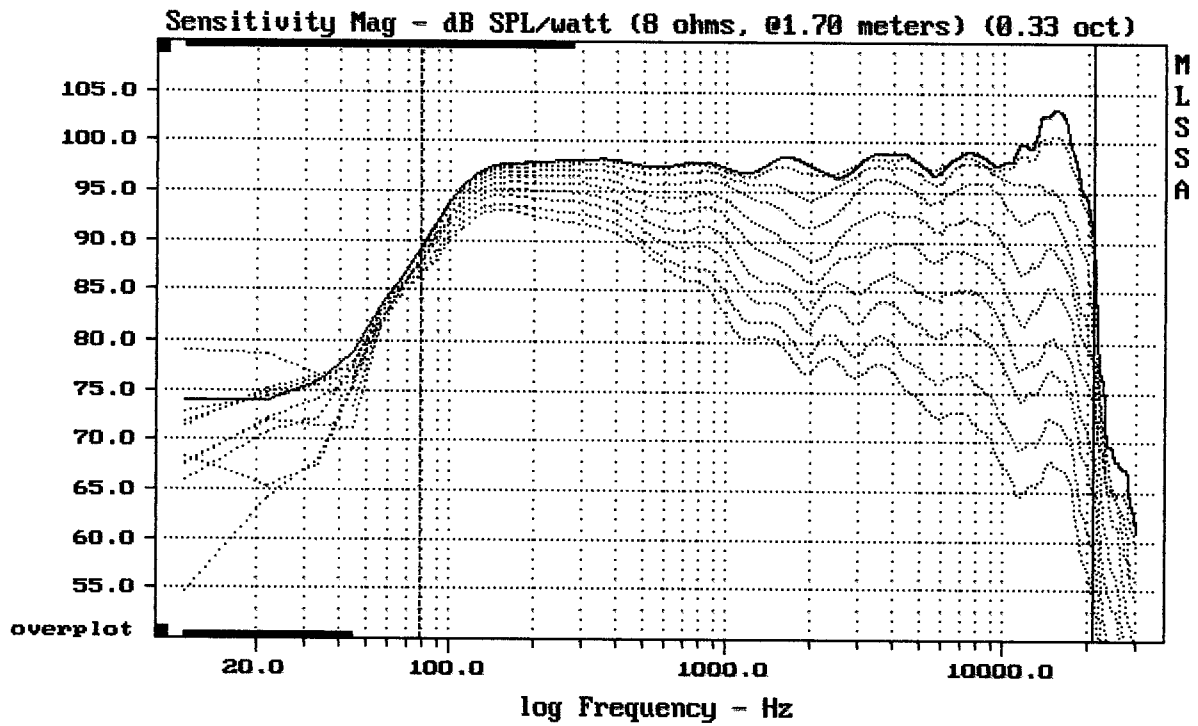
15NDL76 + DE82 + ME90

MLSSA: Frequency Domain



Level (78:21007 Hz) = 98.57 dB SPL/watt (8 ohms, @1.70 meters) (0.33 oct)

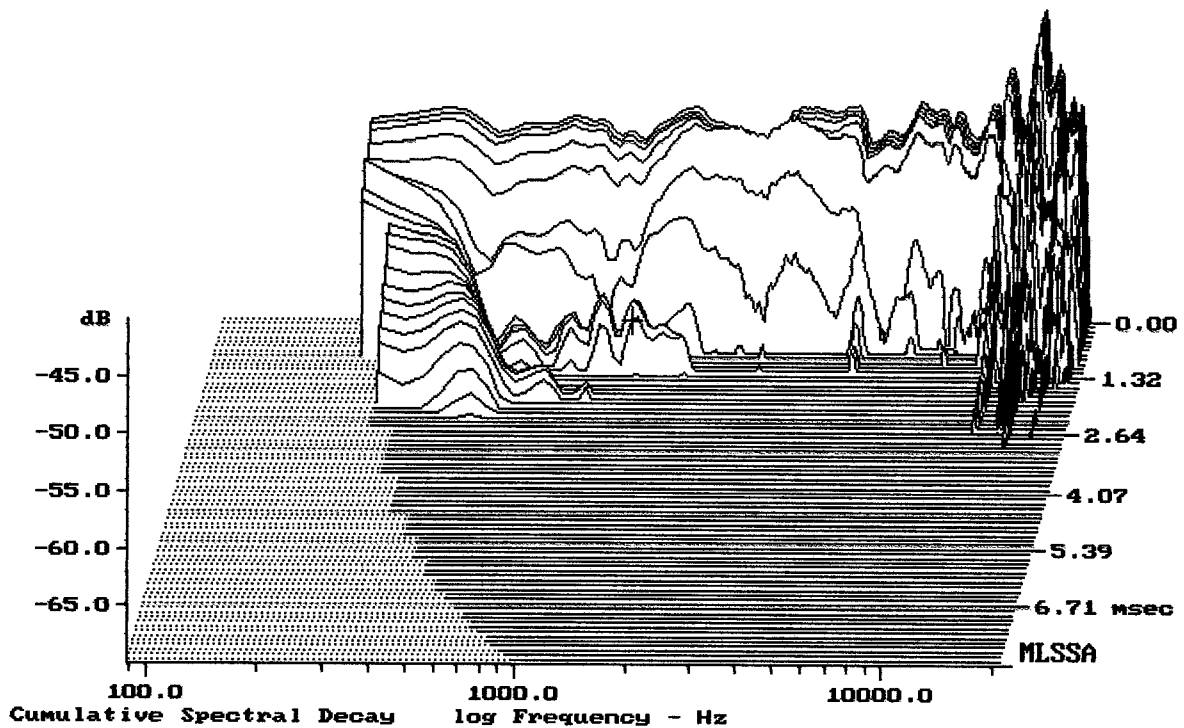
15NDL76 + DE82 + ME90



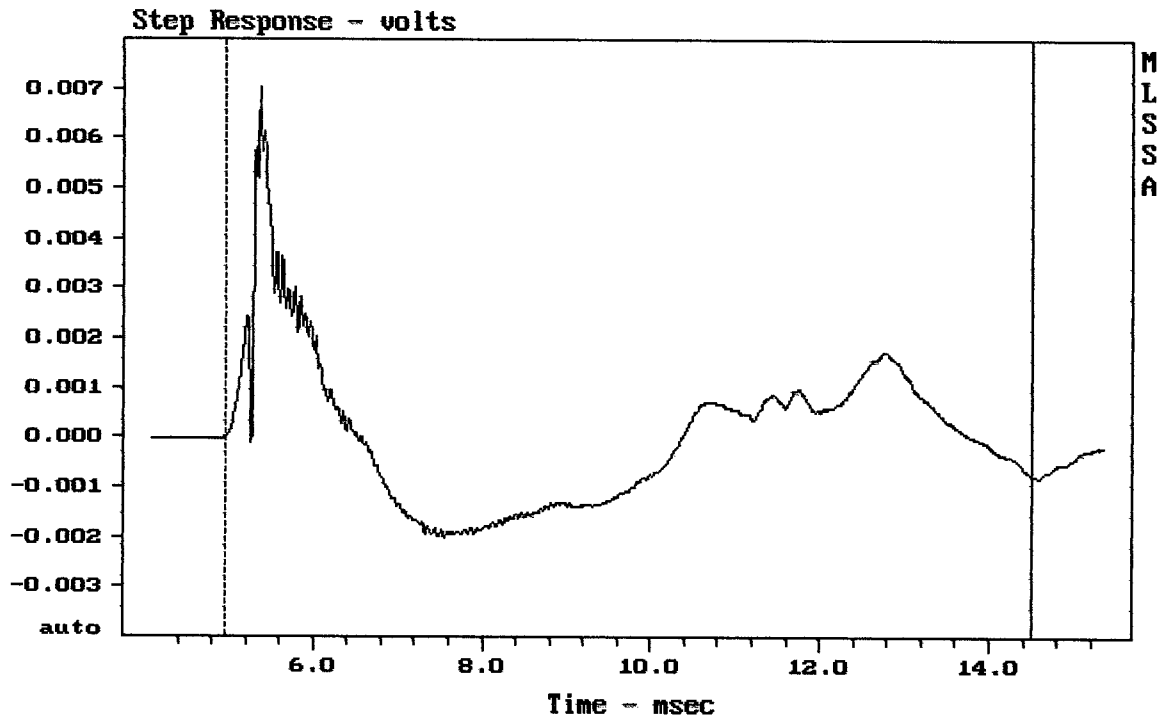
Overlay Compare: dev= +26/-8.2, std= 7.4, avg= -29

15NDL76 + DE82 + ME90

MLSSA: Frequency Domain



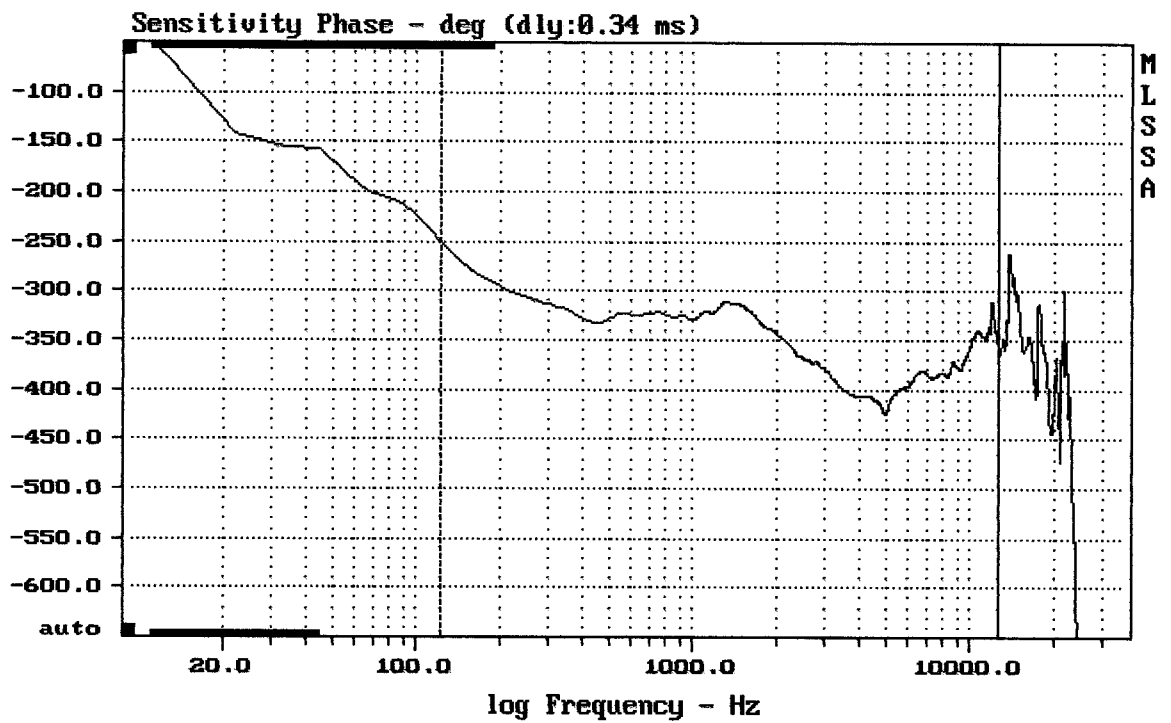
-65.54 dB, 1243 Hz (28), 1.210 msec (12)



mean: 6.217e-005, rms: 0.001503, std: 0.001502, max: 0.007007, min: -0.002012

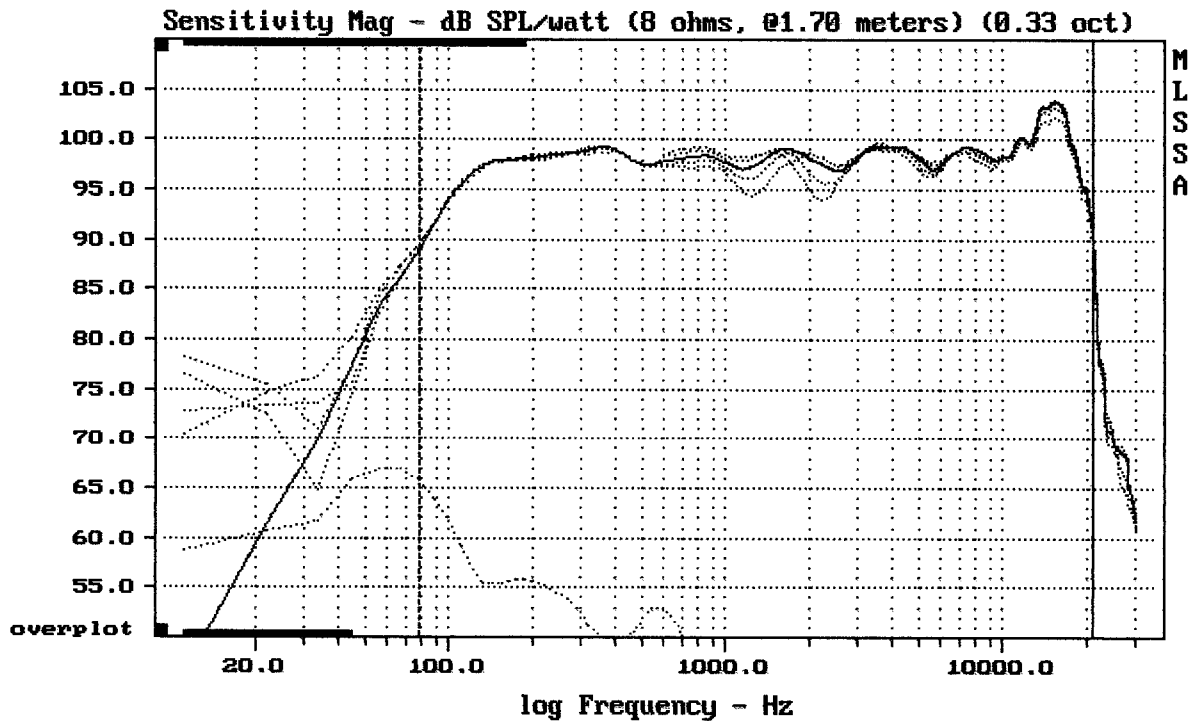
15NDL76 + DE82 + ME90

MLSSA: Time Domain



mean: -367.8, rms: 369.1, std: 30.7, max: -249.9, min: -423.5

15NDL76 + DE82 + ME90



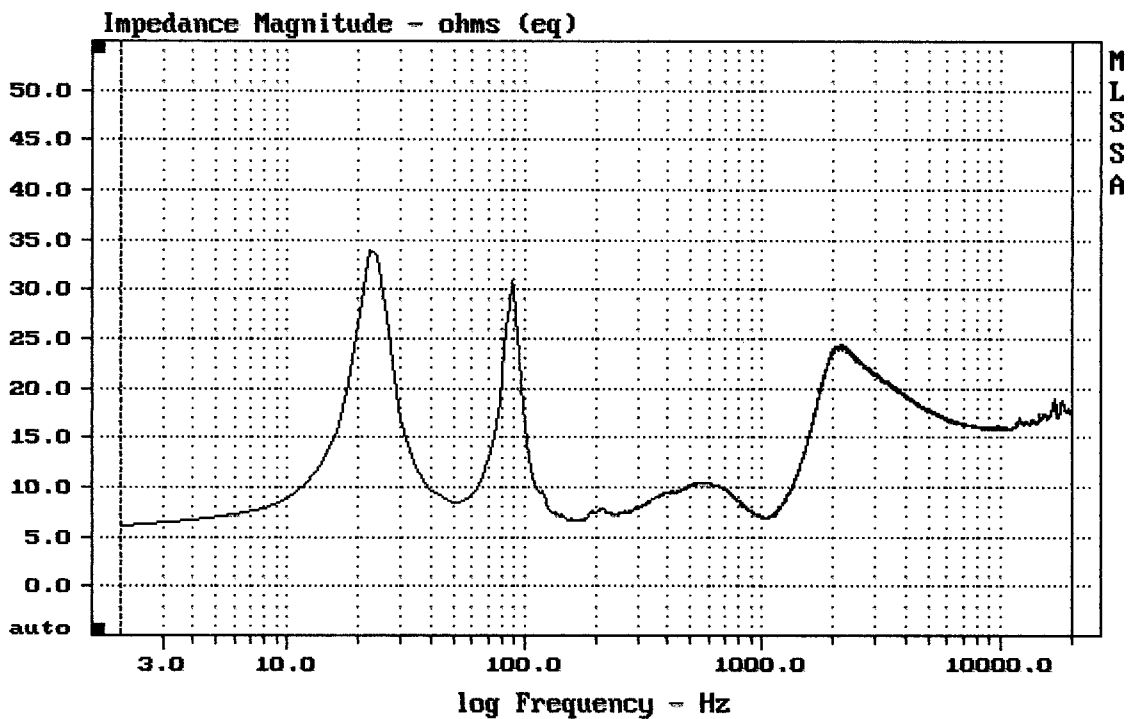

---

mean: 99.36, rms: 99.73, std: 2.26, max: 103.68, min: 89.17

---

15NDL76 + DE82 + ME90

MLSSA: Frequency Domain




---

mean: 16.88, rms: 17.13, std: 2.903, max: 34.05, min: 6.057

---

15NDL76 + DE82 + ME90