

Sestava RCF MB15H401 + B&C Speakers DE82/16 + ME90

Osazení:

- RCF MB15H401 8/Ohm

<http://eshop.prodance.cz/DetailPage.asp?DPG=87624>

- B&C Speakers DE82/16 16/Ohm

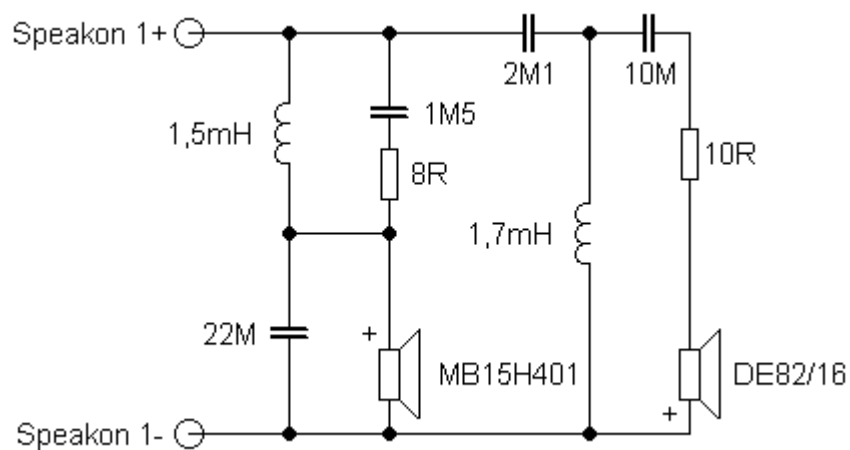
<http://eshop.prodance.cz/DetailPage.asp?DPG=92772>

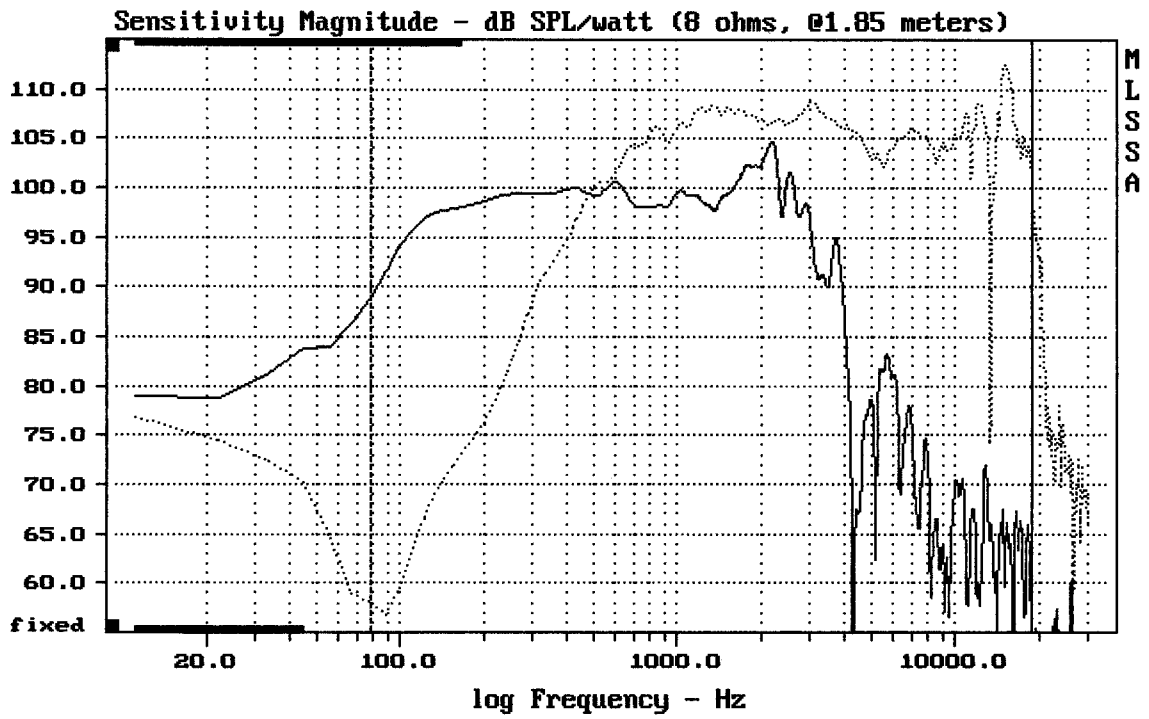
(**pozn.*: link k driveru DE82TN v 8 ohmové verzi; driver Vám na požádání zdarma přeosadíme na verzi 16 ohm)

- B&C Speakers ME90

<http://eshop.prodance.cz/DetailPage.asp?DPG=80246>

Schéma výhybky:

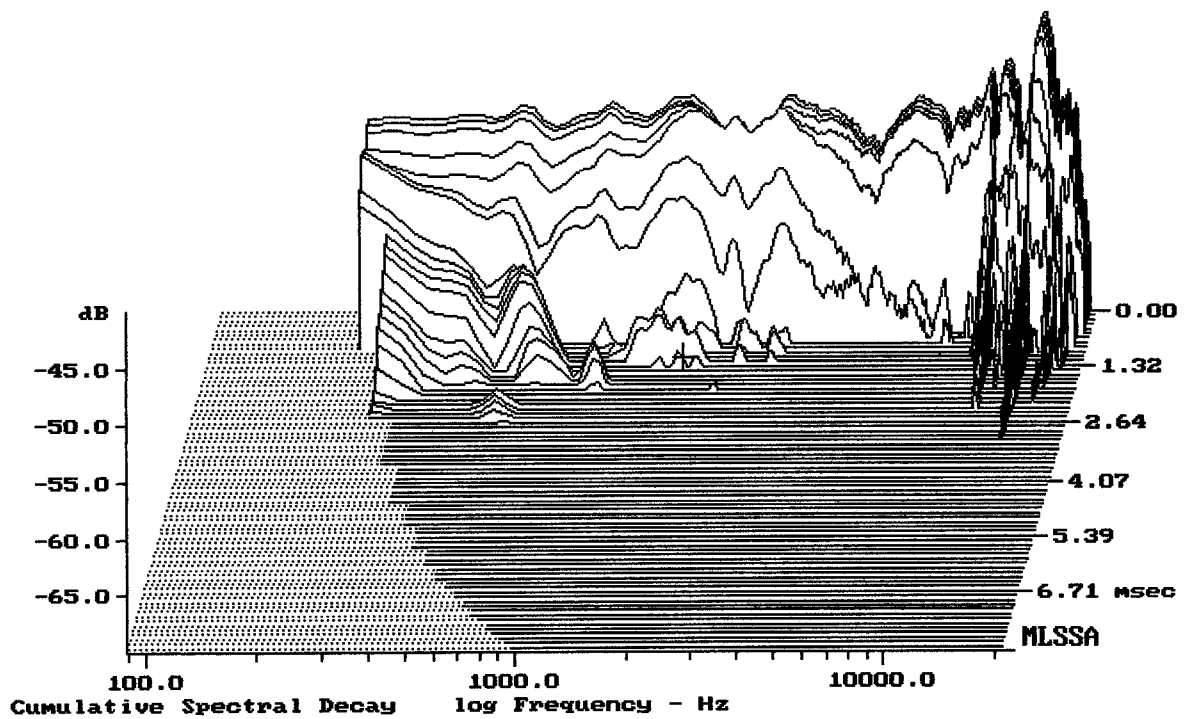




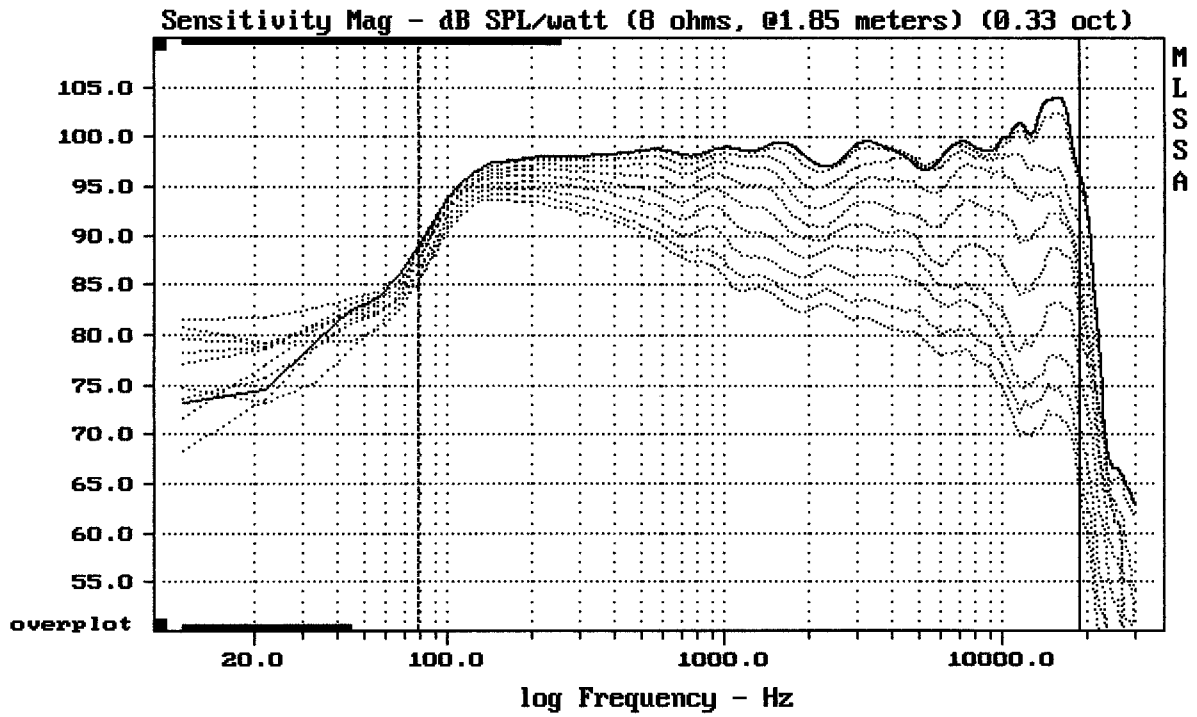
CURSOR: dy = 52.6757 x = 18987.4817 (1711)

MB15H401 + DE82/16 + ME90

MLSSA: Frequency Domain



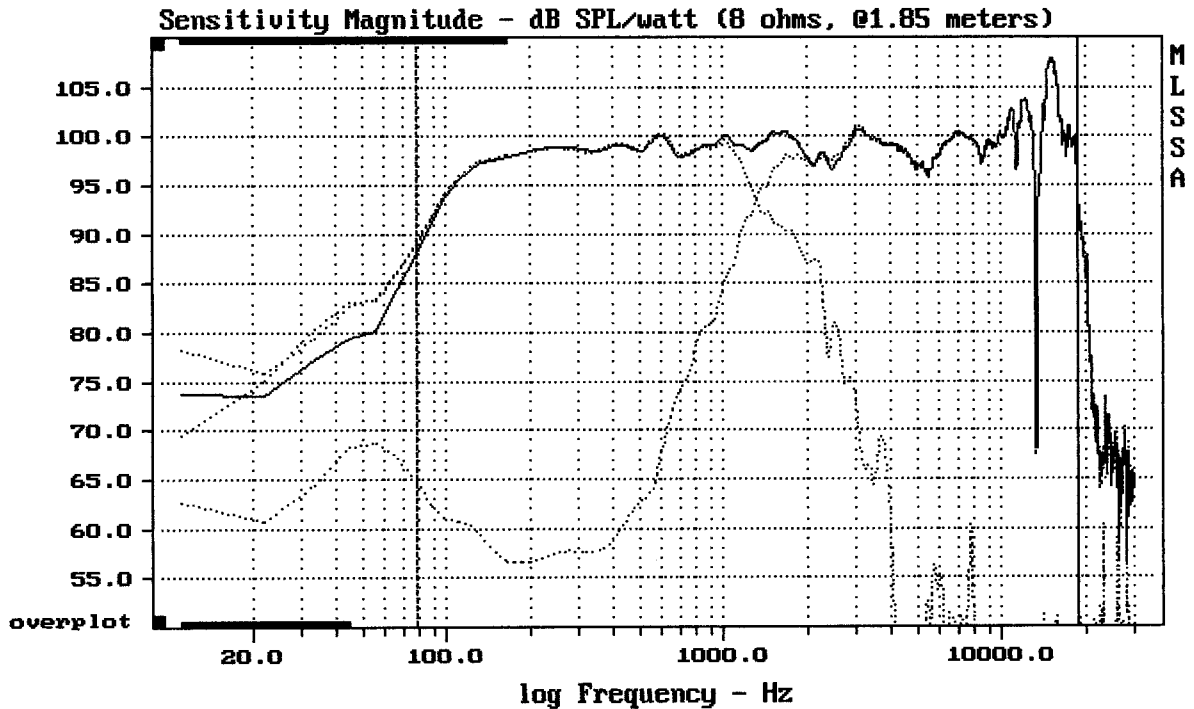
-69.21 dB, 1731 Hz (39), 1.320 msec (13)



Overlay Compare: dev= +21/-8.3, std= 7.1, avg= -24

MB15H401 + DE82/16 + ME90

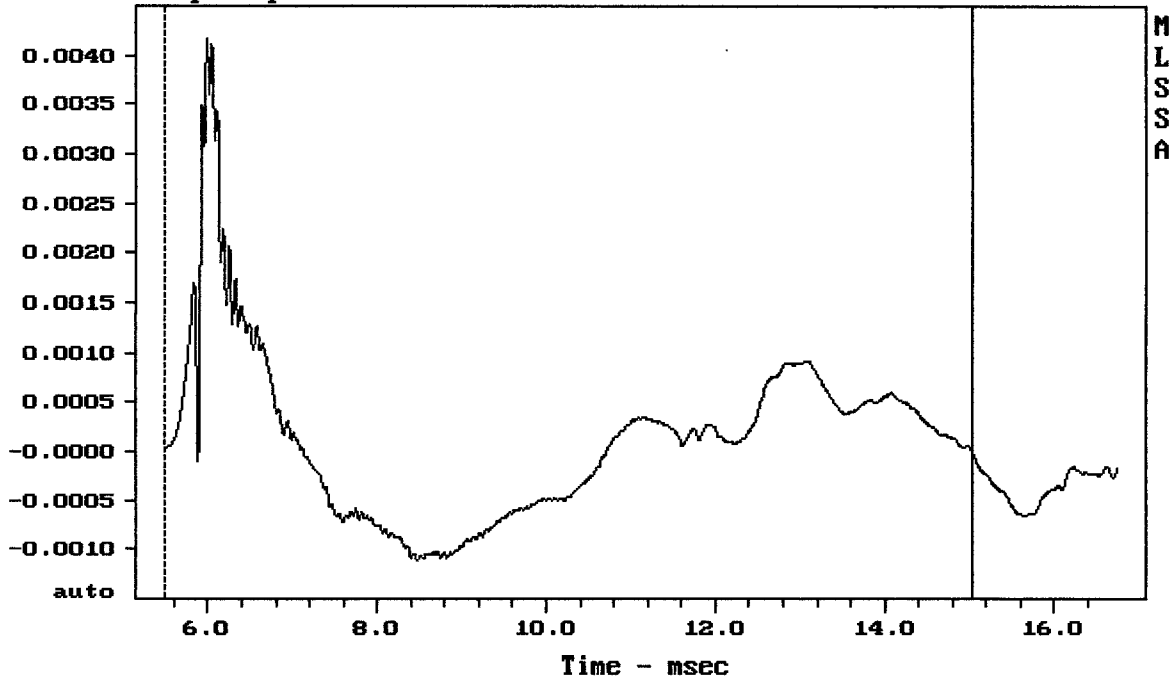
MLSSA: Frequency Domain



Level (78:18987 Hz) = 99.21 dB SPL/watt (8 ohms, @1.85 meters)

MB15H401 + DE82/16 + ME90

Step Response - volts

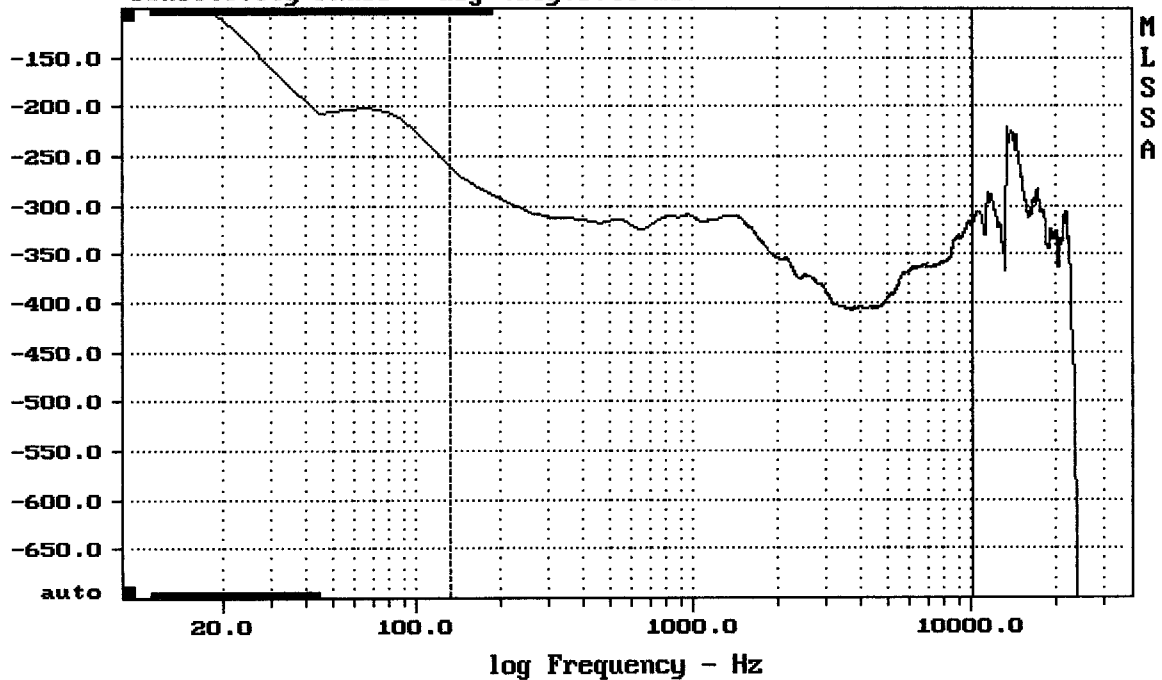


CURSOR: $y = -9.93816e-006$ $x = 15.0370$ (1367)

MB15H401 + DE82/16 + ME90

MLSSA: Time Domain

Sensitivity Phase - deg (dly:0.44 ms)



CURSOR: $y = -317.359$ $x = 10087.4464$ (909)

MB15H401 + DE82/16 + ME90