

Sestava 15NW76 + BMS4555 + ME90

Osazení:

15NW76

<http://eshop.prodance.cz/DetailPage.asp?DPG=82866>

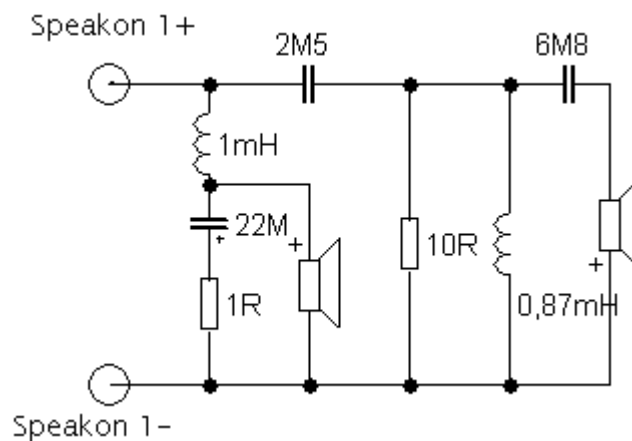
BMS4555

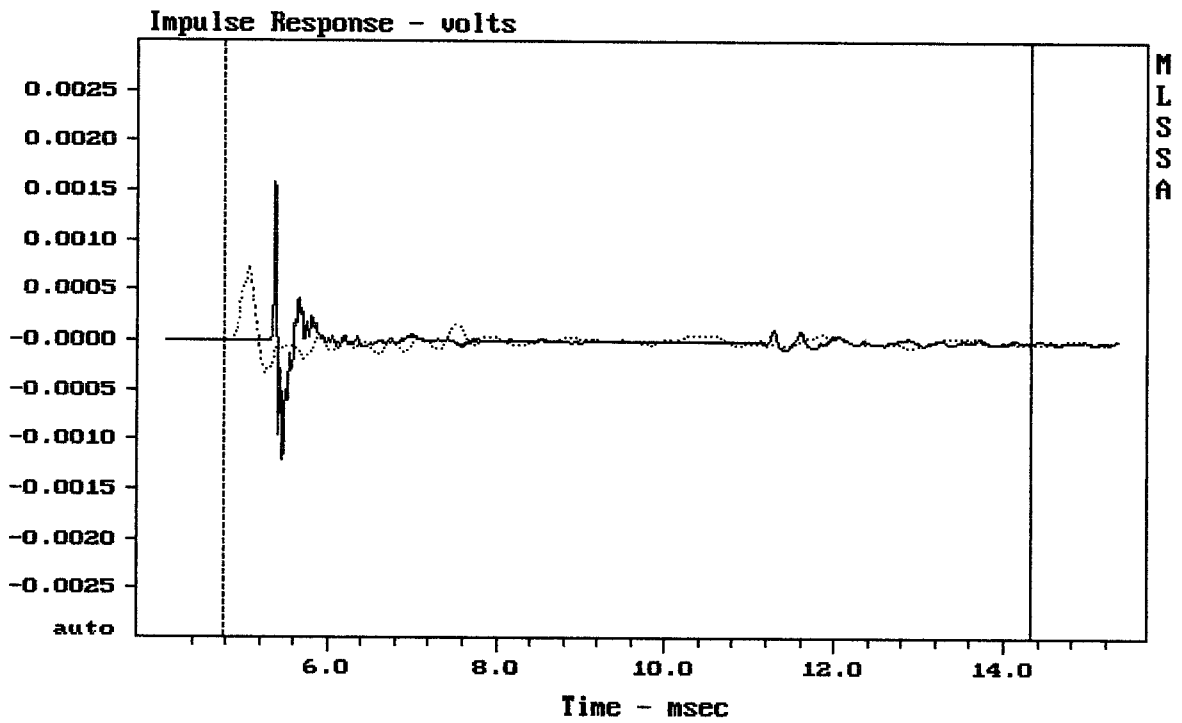
<http://eshop.prodance.cz/DetailPage.asp?DPG=87228>

ME90

<http://eshop.prodance.cz/DetailPage.asp?DPG=80246>

Schéma výhybky:

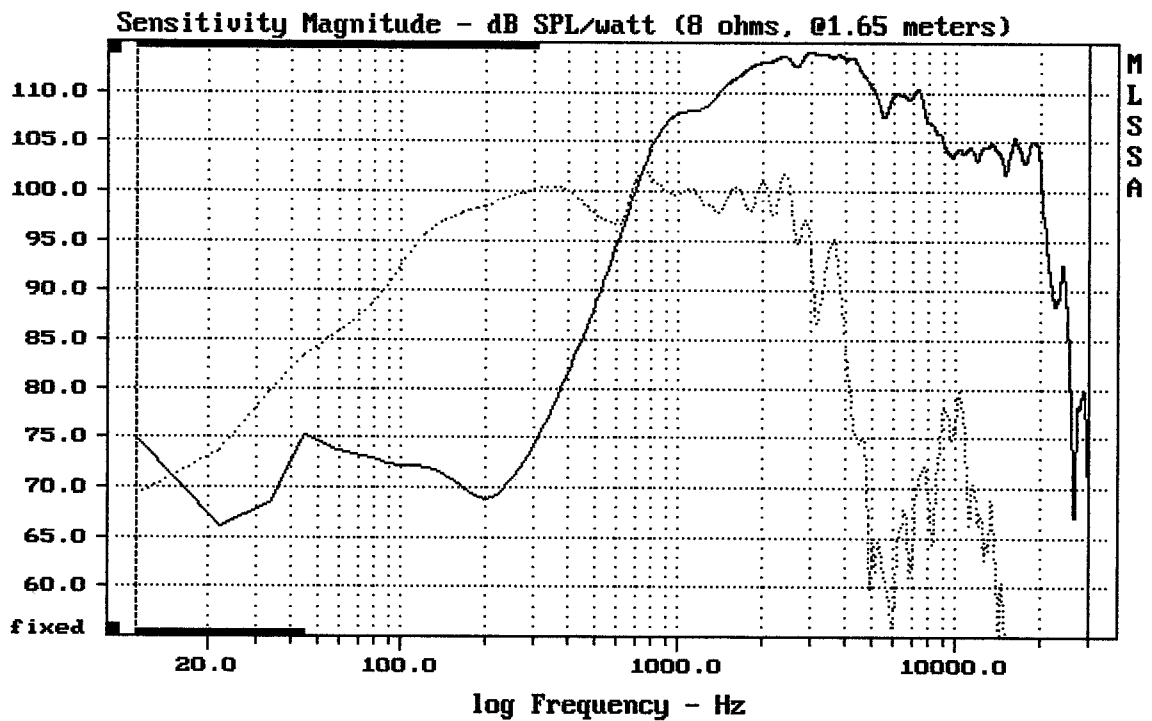




CURSOR: $dy = -1.72854e-005$ $x = 14.3220$ (1302)

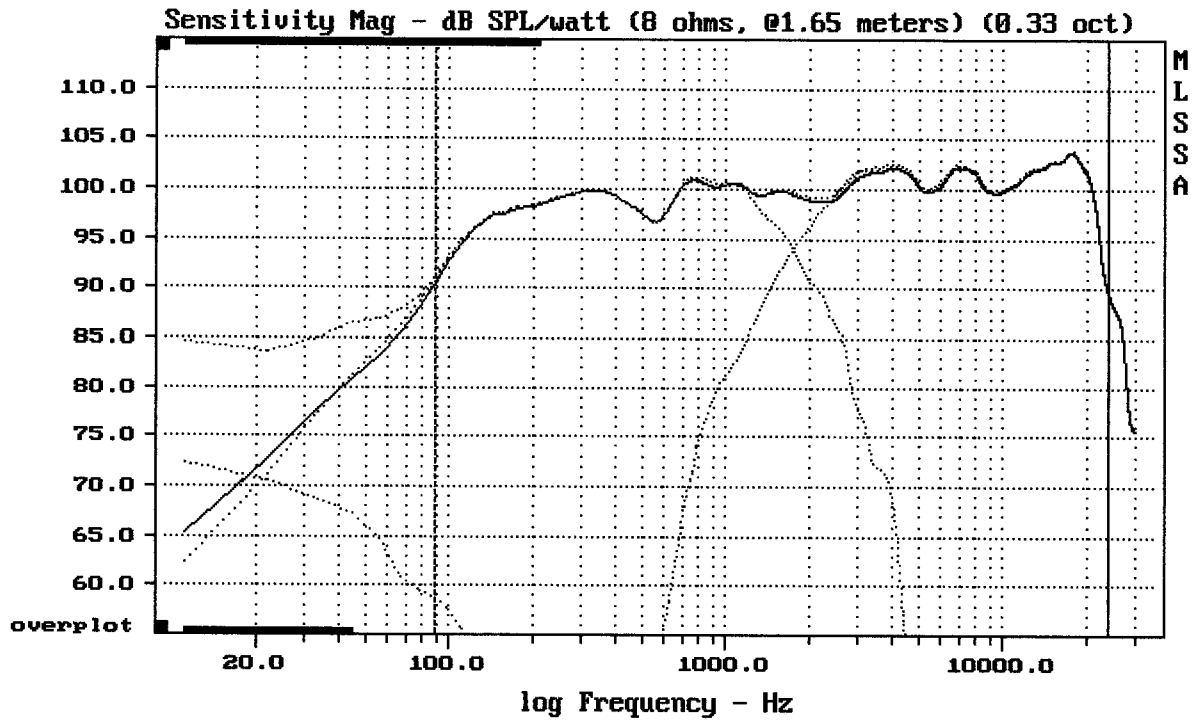
15NW76 + BMS4555 + ME90/90 DEG.

MLSSA: Time Domain



CURSOR: $dy = -26.9866$ $x = 30007.1014$ (2704)

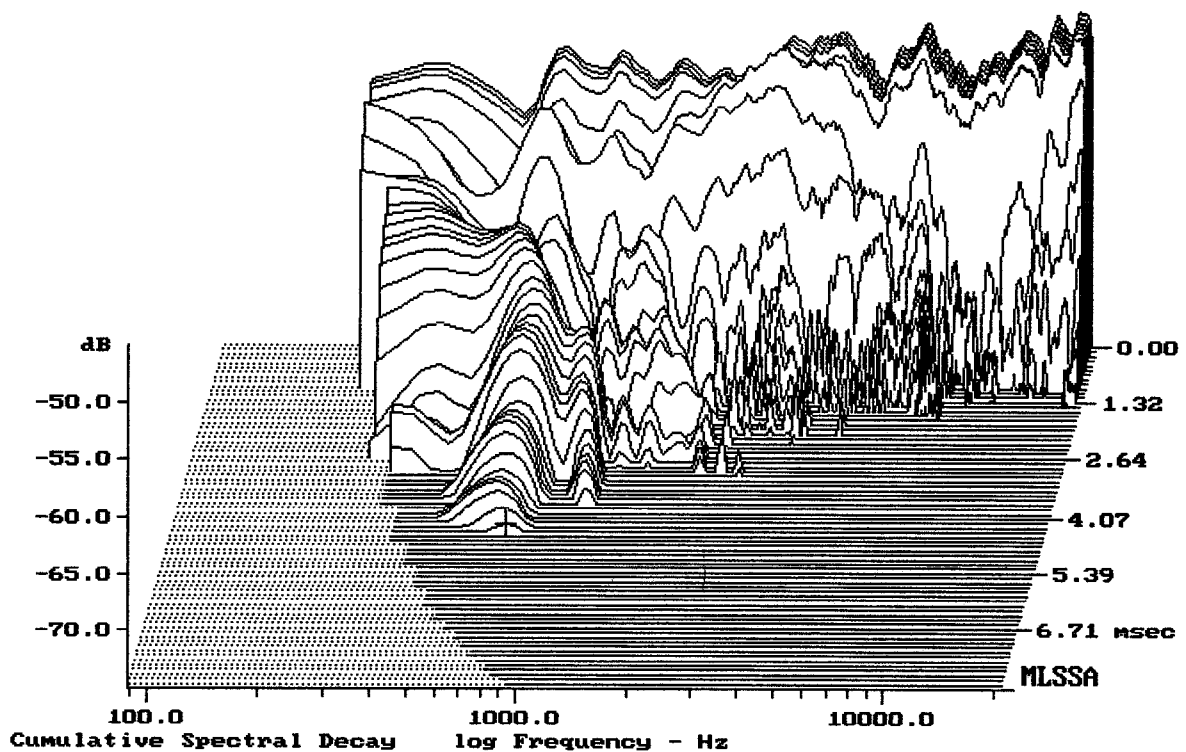
15NW76 + BMS4555 + ME90/90 DEG.



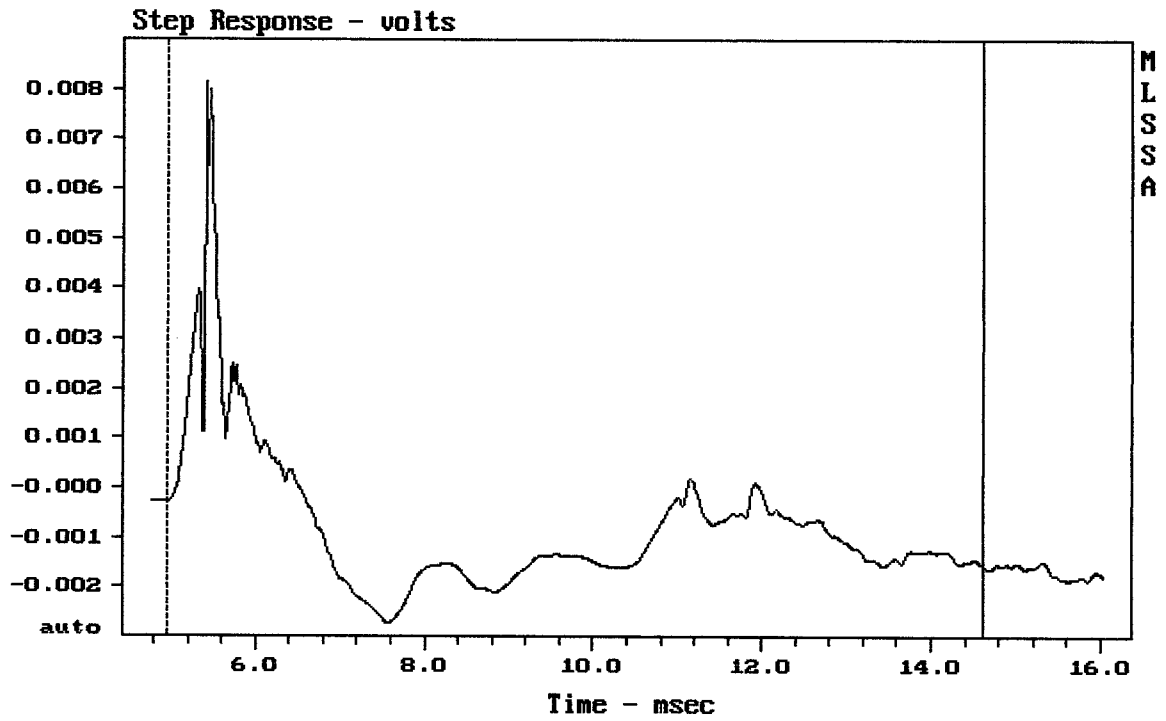
Level (89:24003 Hz) = 100.14 dB SPL/watt (8 ohms, @1.65 meters) (0.33 oct)

15NW76 + BMS4555 + ME90/90 DEG.

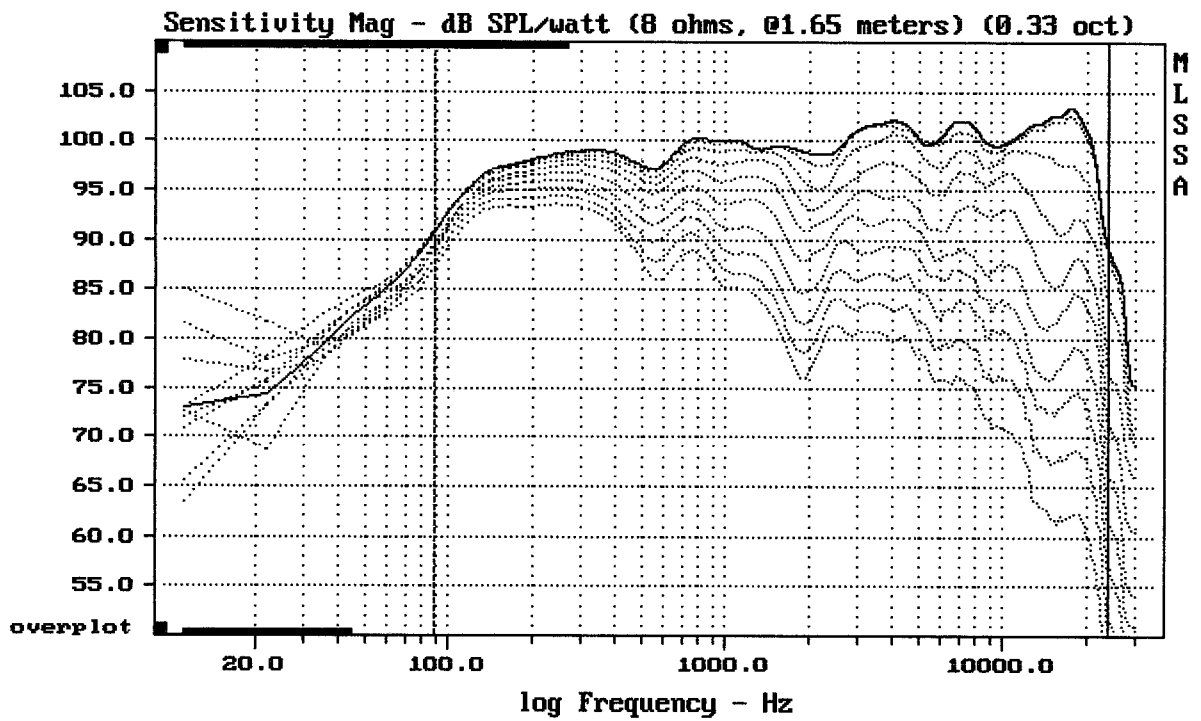
MLSSA: Frequency Domain

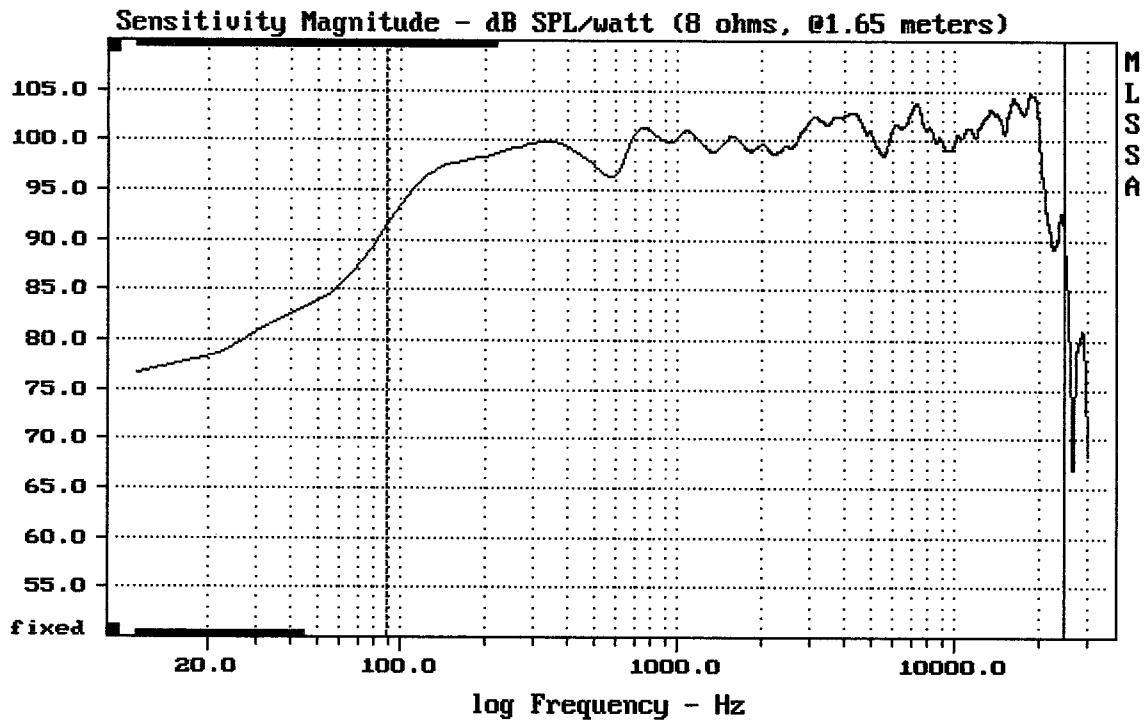


-74.36 dB, 710 Hz (16), 4.400 msec (41)



MLSSA: Time Domain

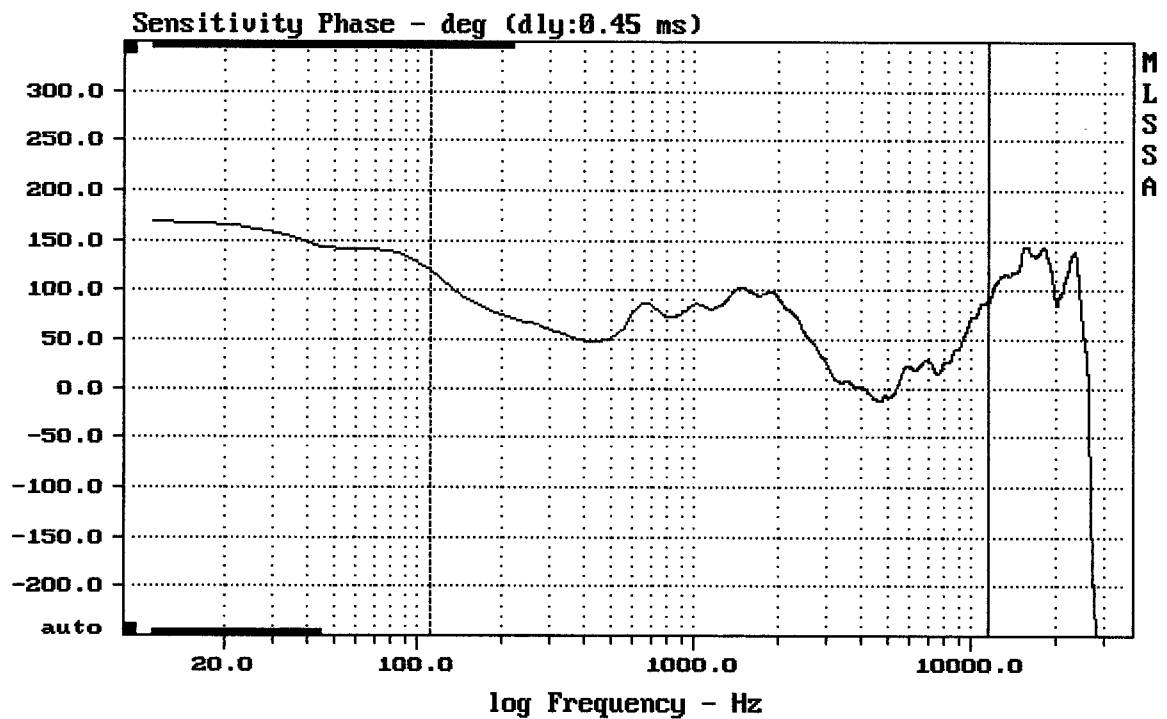




mean: 100.64, rms: 101.15, std: 2.63, max: 104.71, min: 89.09

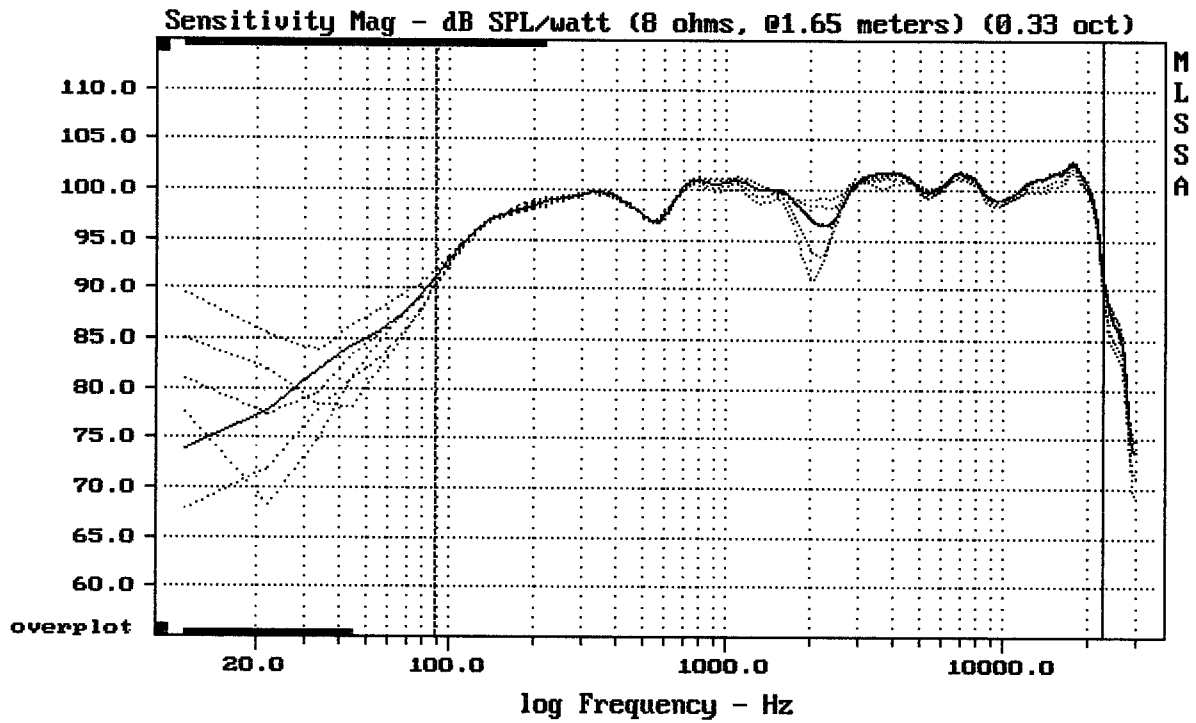
15NW76 + BMS4555 + ME90/90 DEG.

MLSSA: Frequency Domain



mean: 41.99, rms: 53.97, std: 33.9, max: 119.9, min: -12.45

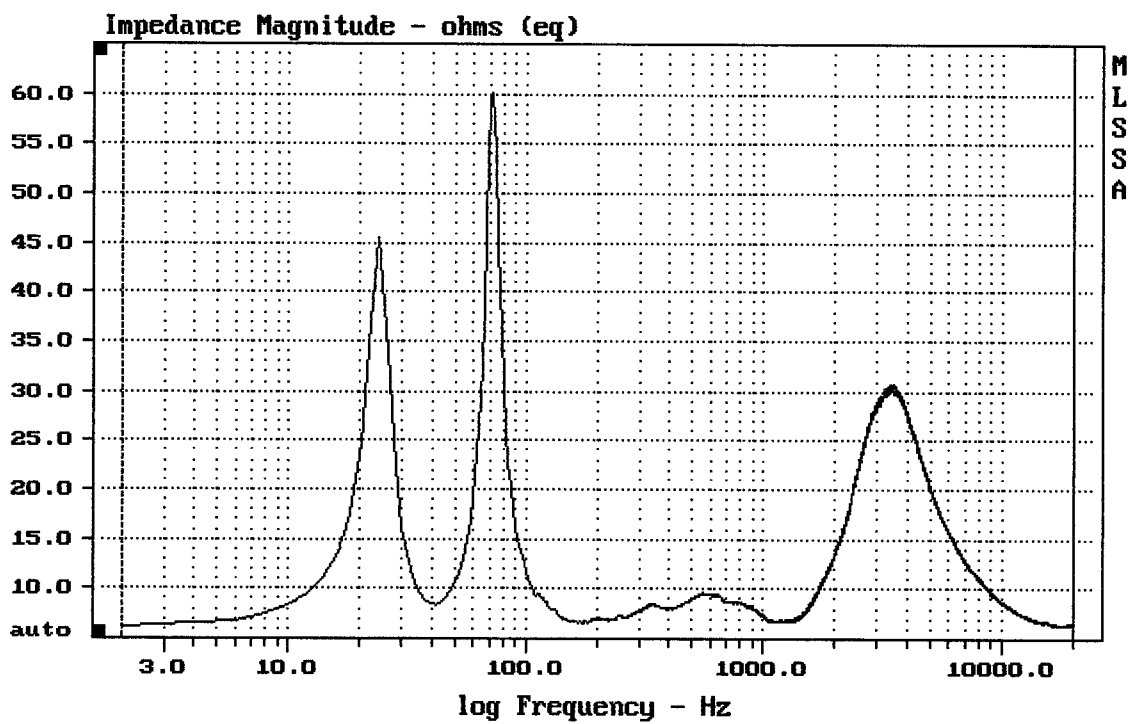
15NW76 + BMS4555 + ME90/90 DEG.



mean: 100.37, rms: 100.53, std: 1.57, max: 102.76, min: 90.25

15NW76 + BMS4555 + ME90/90 DEG.

MLSSA: Frequency Domain



mean: 11.31, rms: 13.2, std: 6.812, max: 60.15, min: 6.094

15NW76 + BMS4555 + ME90/90 DEG.