

Sestava B&C Speakers 15NW100 + DE85TN + Nexo PS15

Osazení:

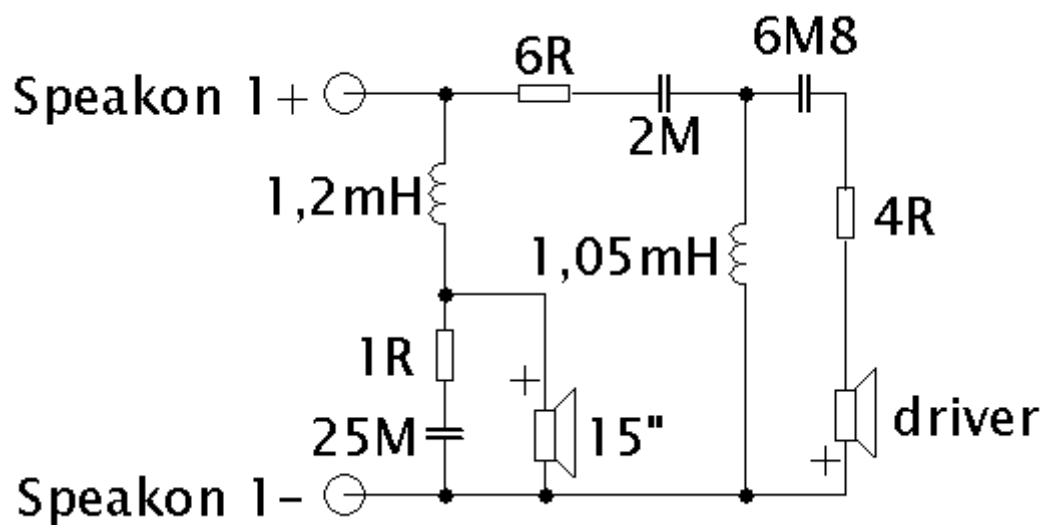
- B&C Speakers 15NW100 8/Ohm

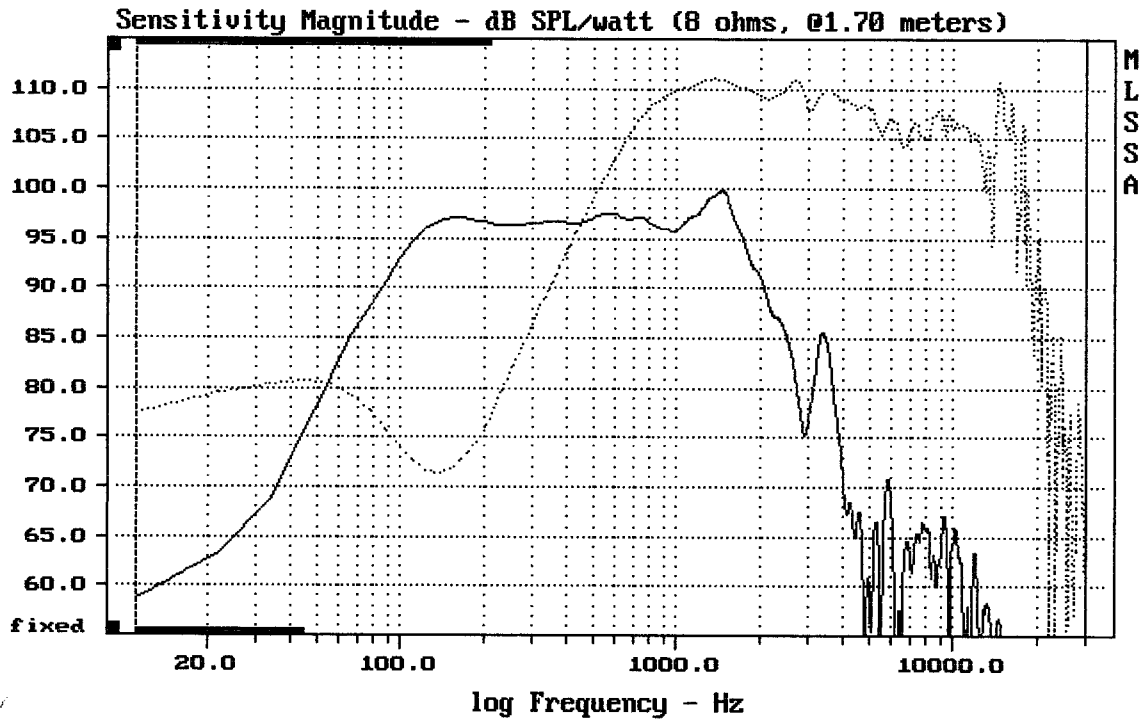
<http://eshop.prodance.cz/DetailPage.asp?DPG=82863>

- B&C Speakers DE85TN 8/Ohm

<http://eshop.prodance.cz/DetailPage.asp?DPG=82336>

Schéma výhybky:

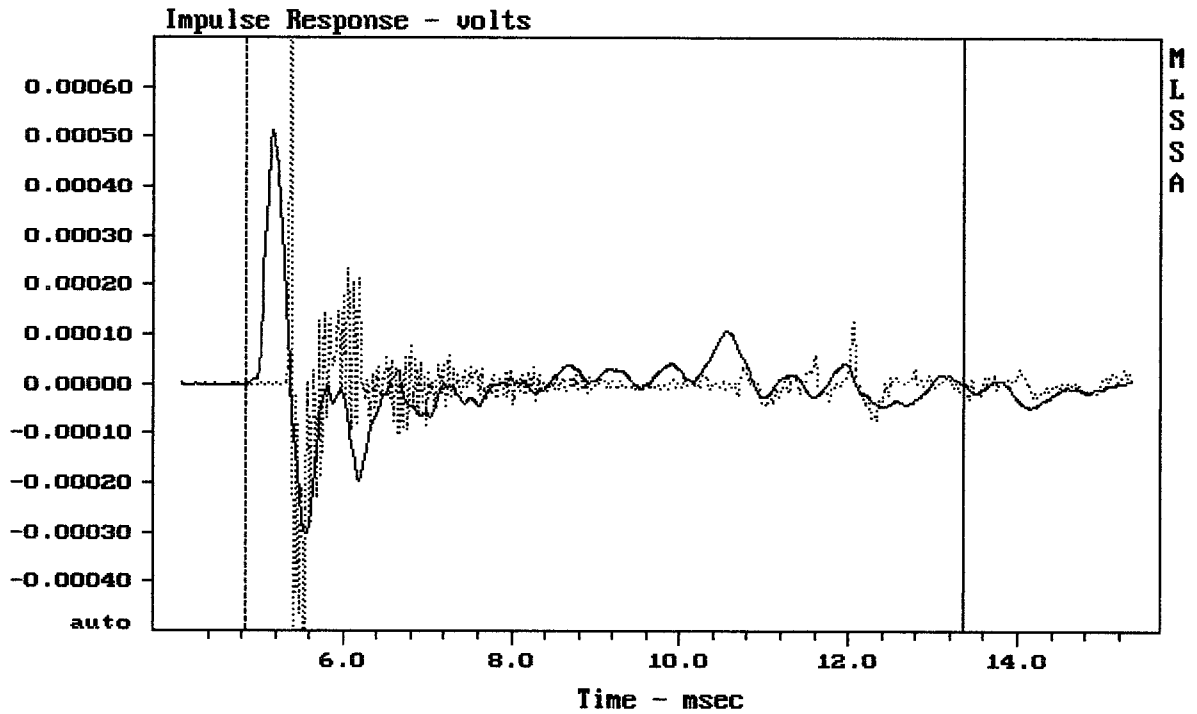




CURSOR: $dy = 39.0965$ $x = 30007.1014$ (2704)

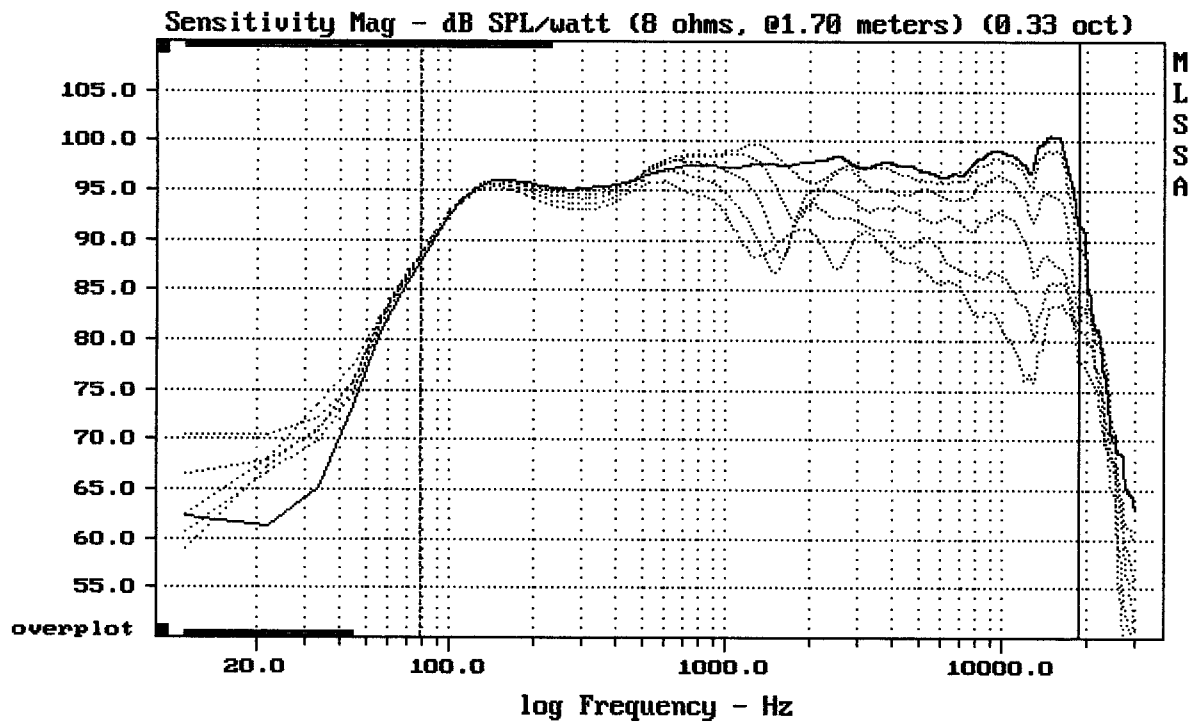
15NW100 + DE85TN + NEXO PS15

MLSSA: Frequency Domain



CURSOR: $dy = -2.49053e-005$ $x = 13.3650$ (1215)

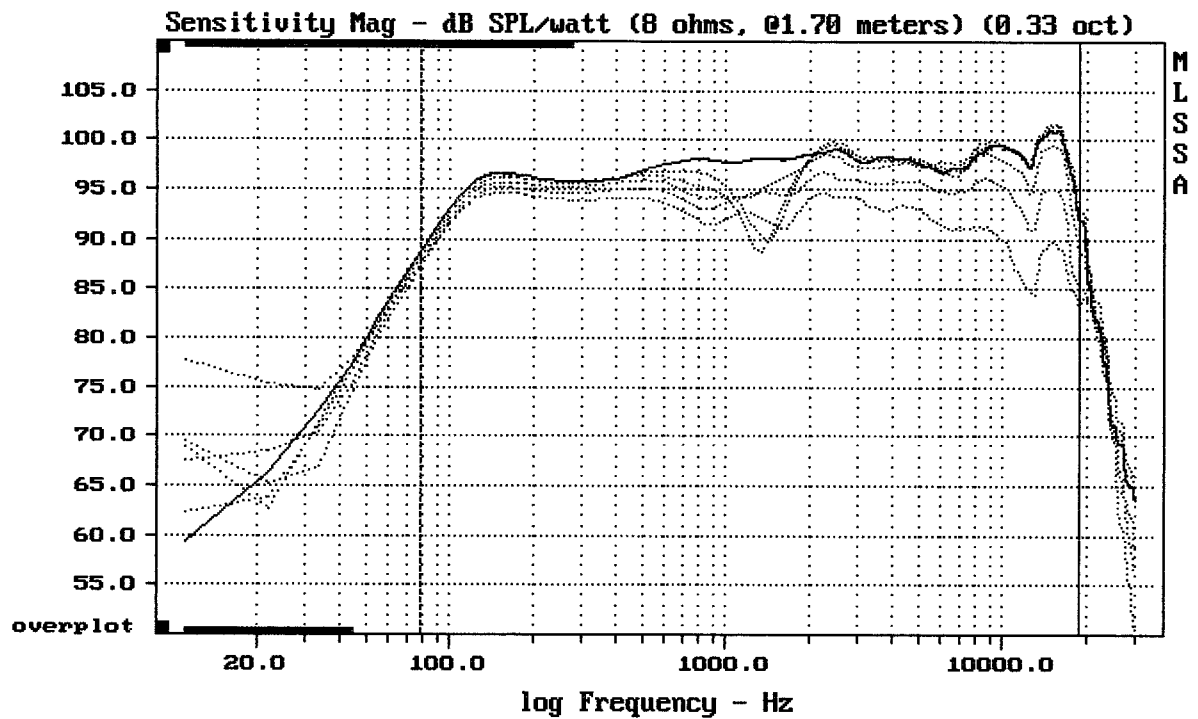
15NW100 + DE85TN + NEXO PS15



Overlay Compare: dev= +14/-8, std= 5.1, avg= -14

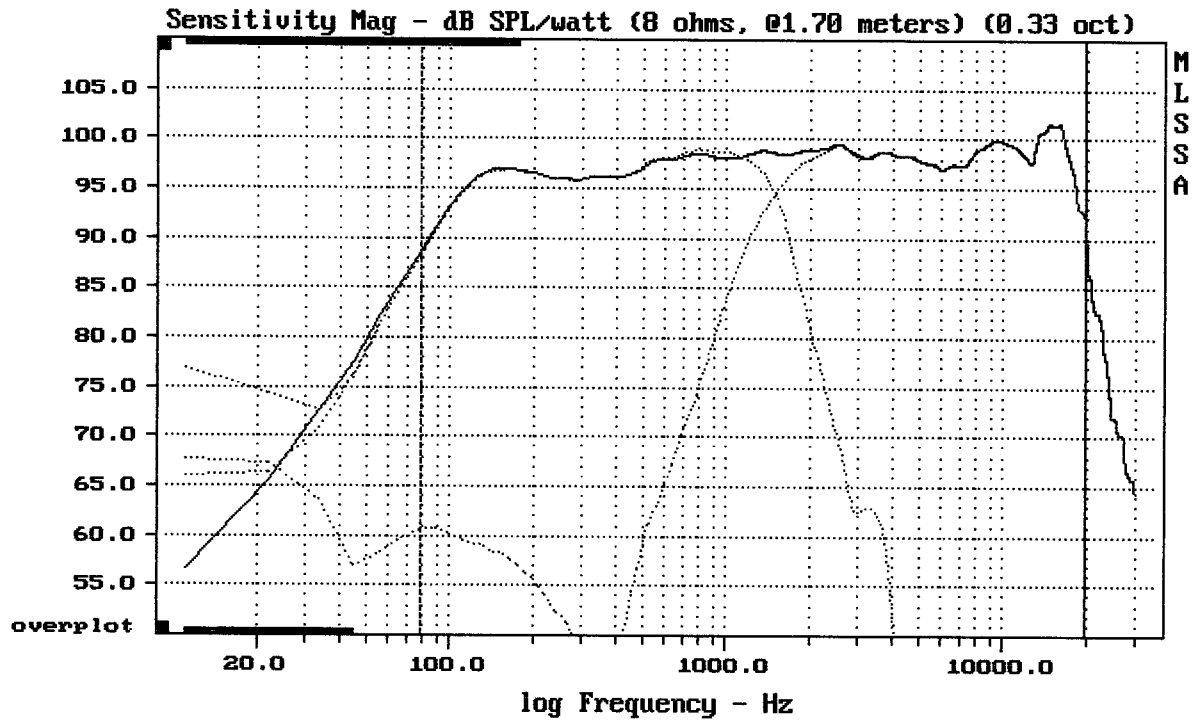
15NW100 + DEB5TN + NEXO PS15

MLSSA: Frequency Domain



Overlay Compare: dev= +7/-5.4, std= 3.2, avg= -8.4

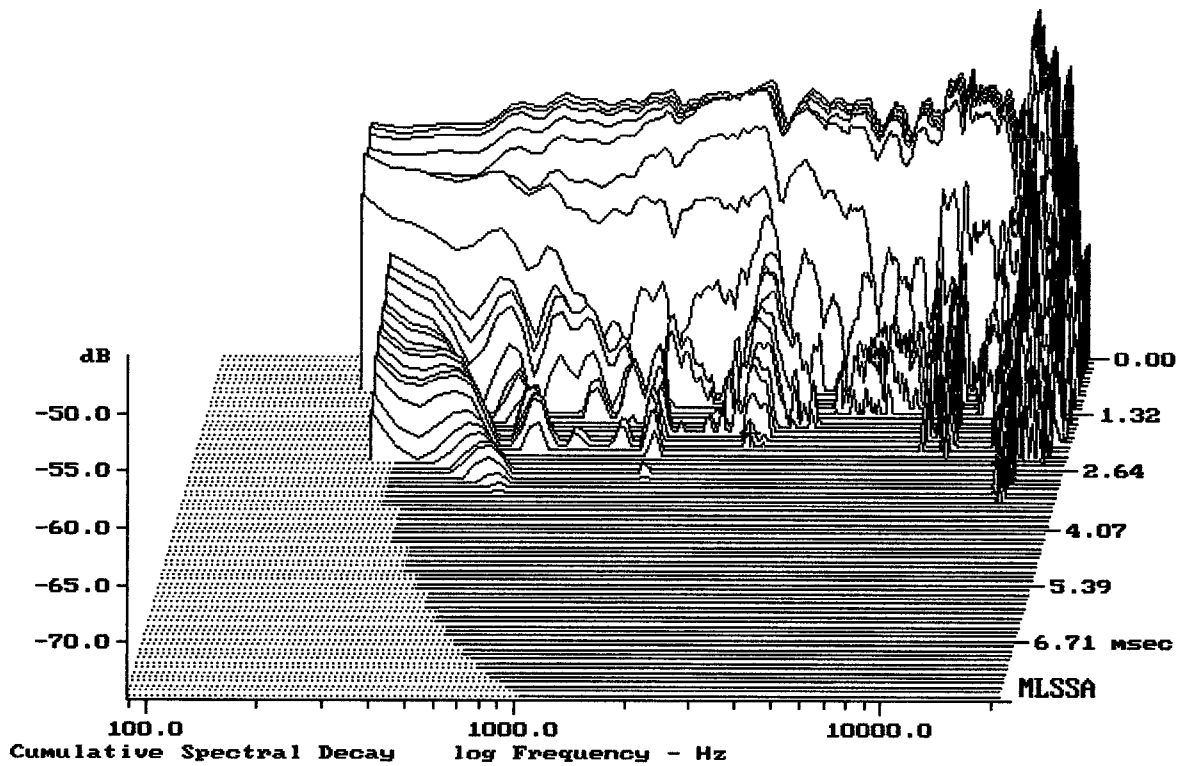
15NW100 + DEB5TN + NEXO PS15



Level (78:19909 Hz) = 97.78 dB SPL/watt (8 ohms, @1.70 meters) (0.33 oct)

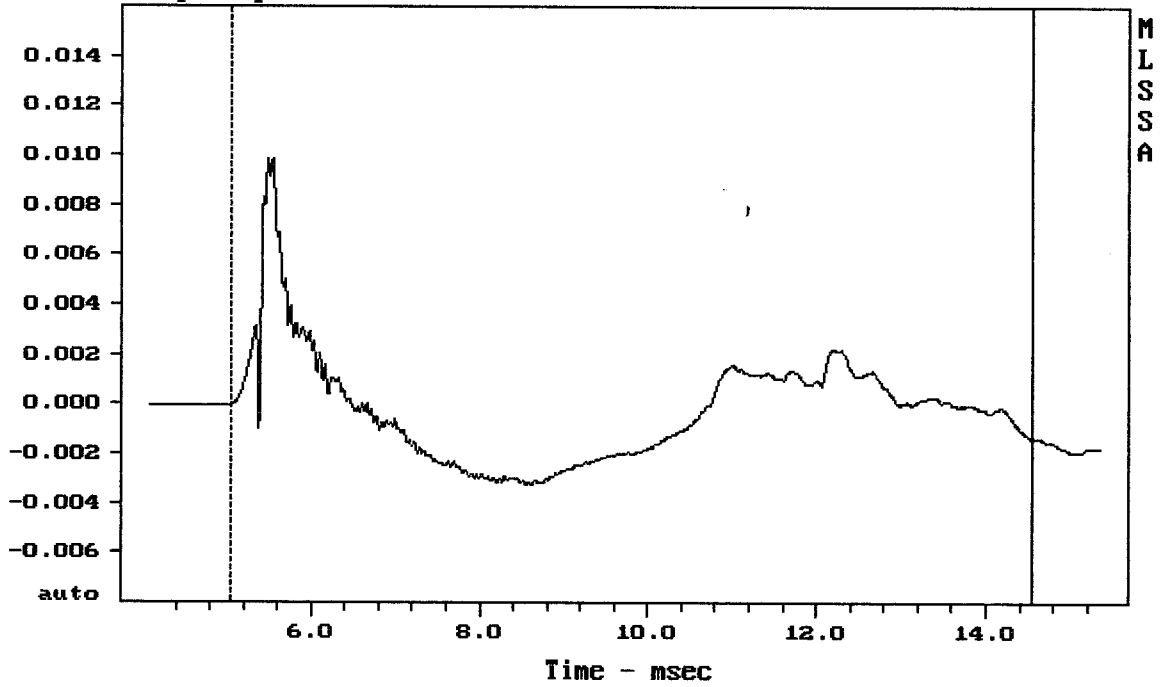
15NW100 + DE85TN + NEXO PS15

MLSSA: Frequency Domain



-73.90 dB, 2797 Hz (63), 2.090 msec (20)

Step Response - volts

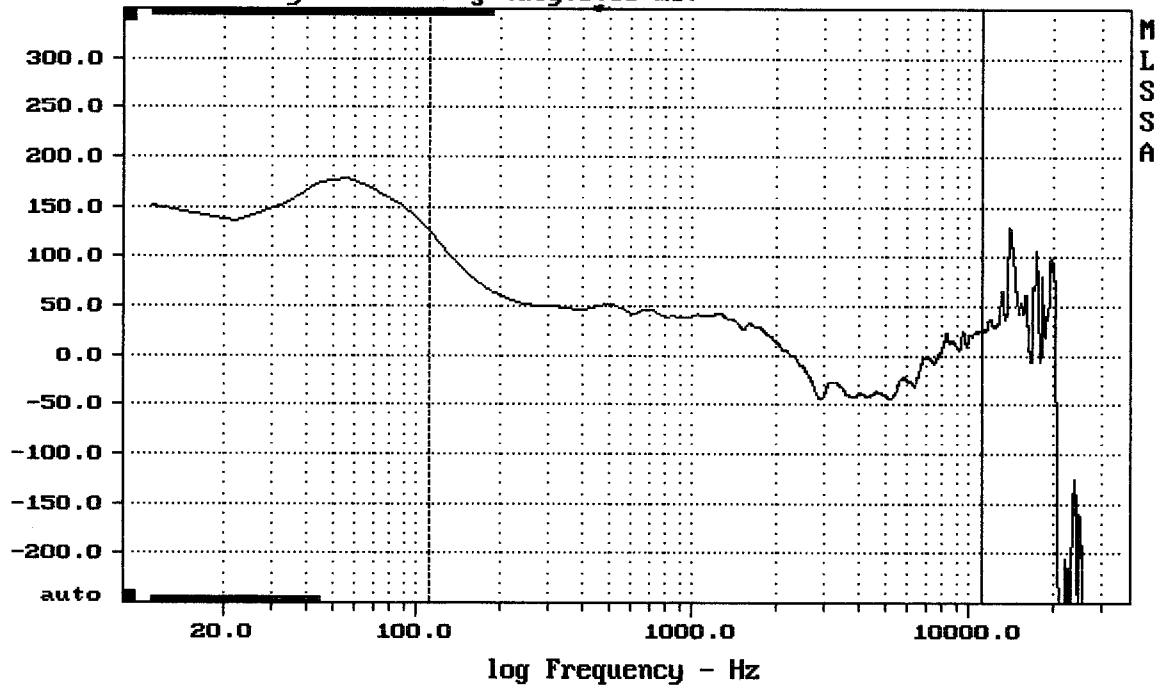


mean: -0.0002313, rms: 0.002189, std: 0.002177, max: 0.009851, min: -0.003252

15NW100 + DE85TN + NEXO PS15

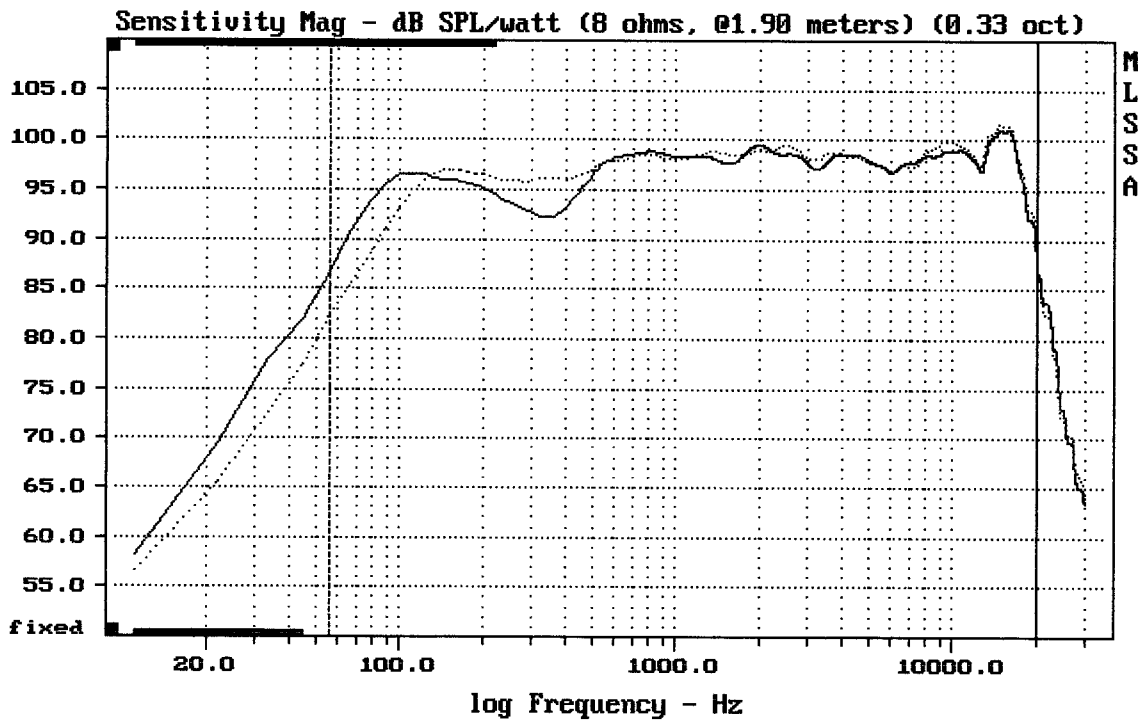
MLSSA: Time Domain

Sensitivity Phase - deg (dly:0.36 ms)



mean: -1.218, rms: 29.4, std: 29.38, max: 126.1, min: -44.08

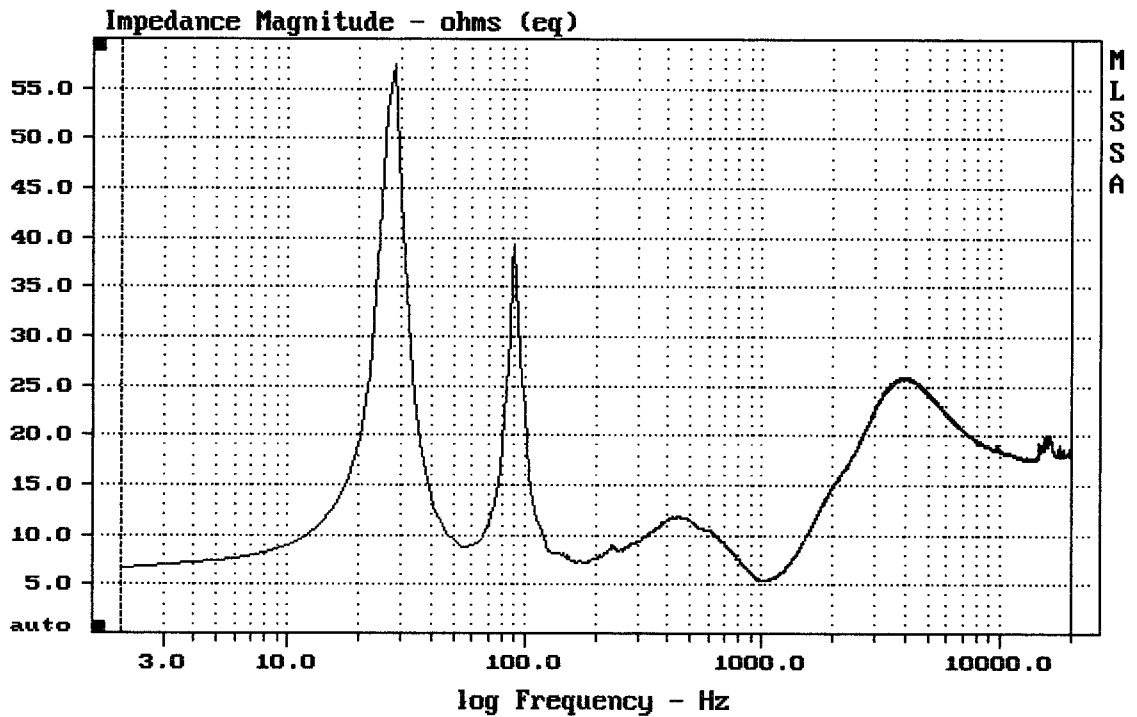
15NW100 + DE85TN + NEXO PS15



Overlay Compare: dev= +5.7/-3.5, std= 0.56, avg= -0.45

15NW100 + DE85TN + NEXO PS15

MLSSA: Frequency Domain



mean: 18.66, rms: 19.08, std: 3.982, max: 57.55, min: 5.364

15NW100 + DE85TN + NEXO PS15