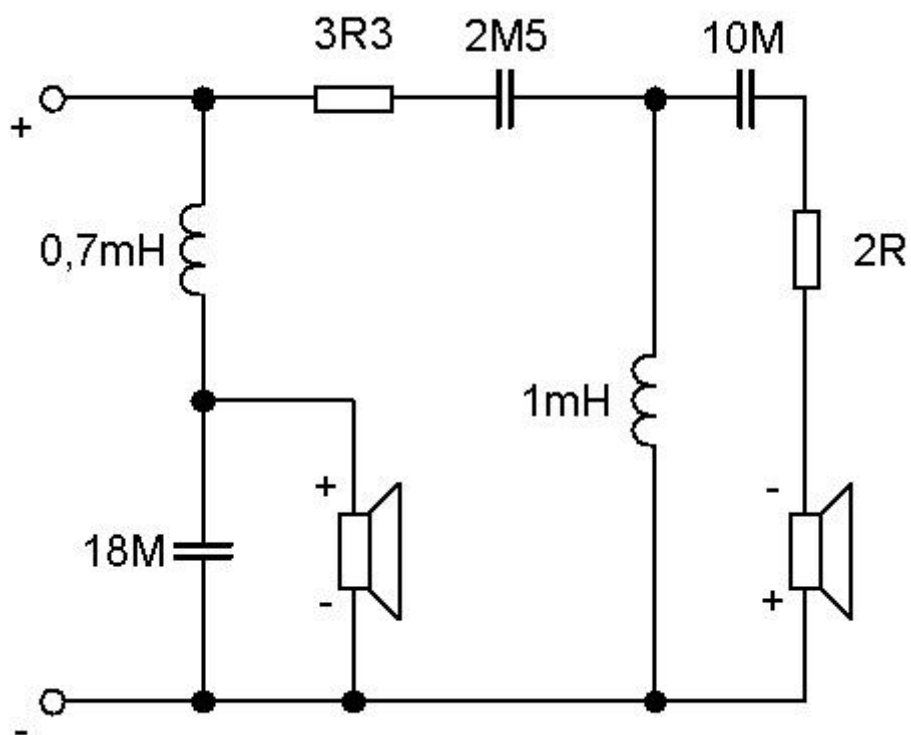
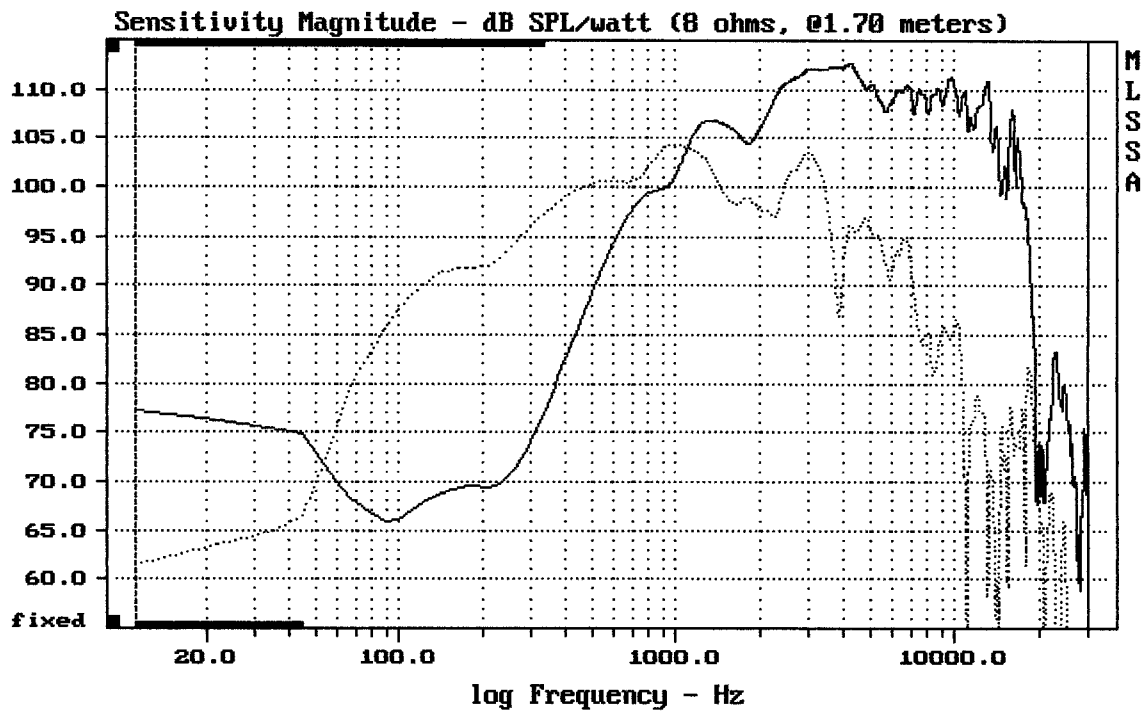


Koaxiální reproduktor RCF CX10N251

<http://eshop.prodance.cz/DetailPage.asp?DPG=95065>

Schéma výhybky:

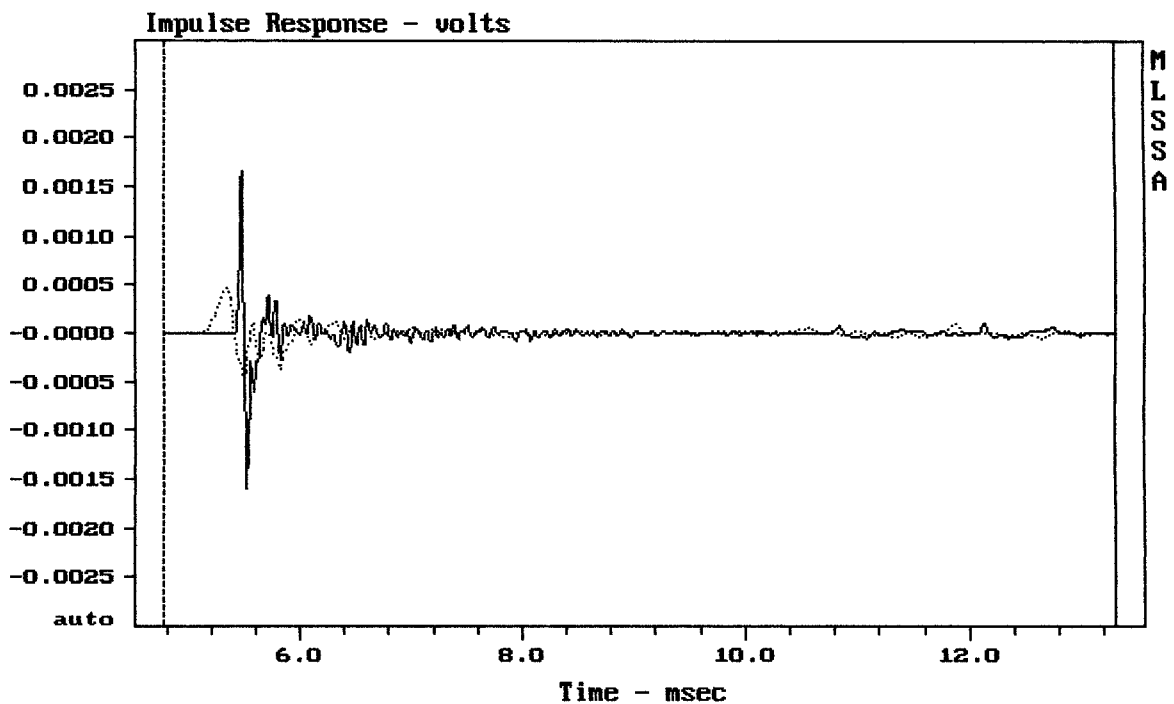




CURSOR: dy = -24.5521 x = 30007.1014 (2704)

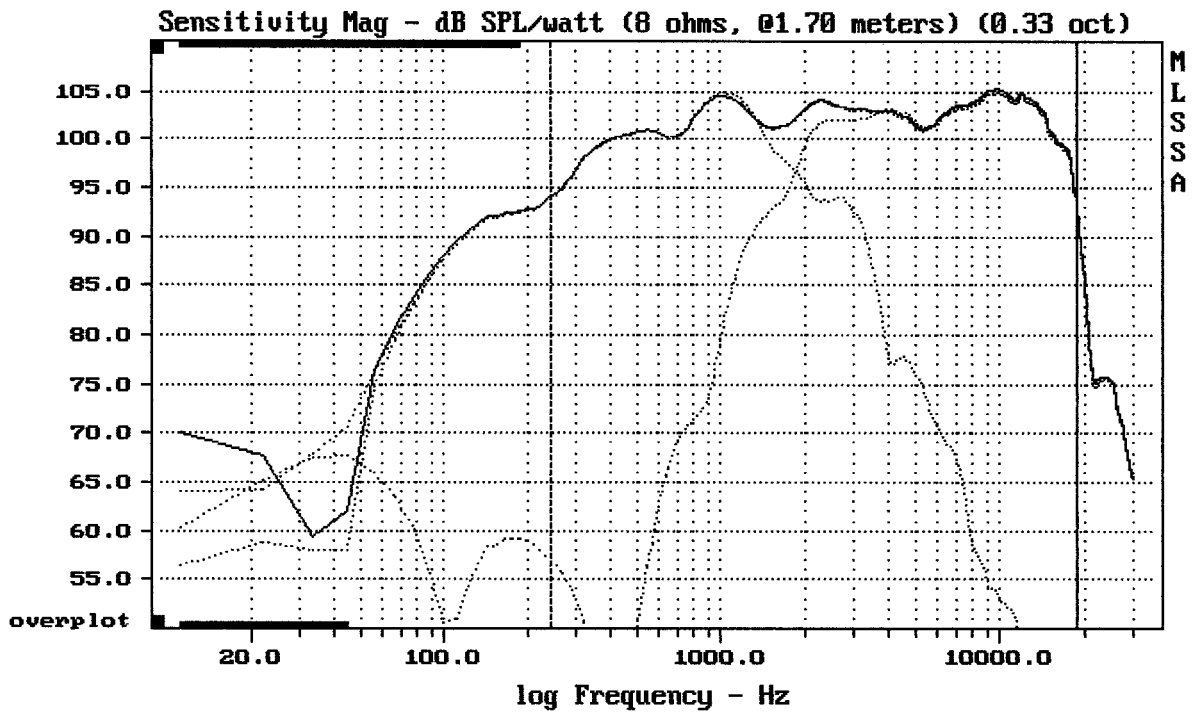
CX10N251

MLSSA: Frequency Domain



mean: -2.701e-007, rms: 8.021e-005, std: 8.021e-005, max: 0.0004762, min: -0.0

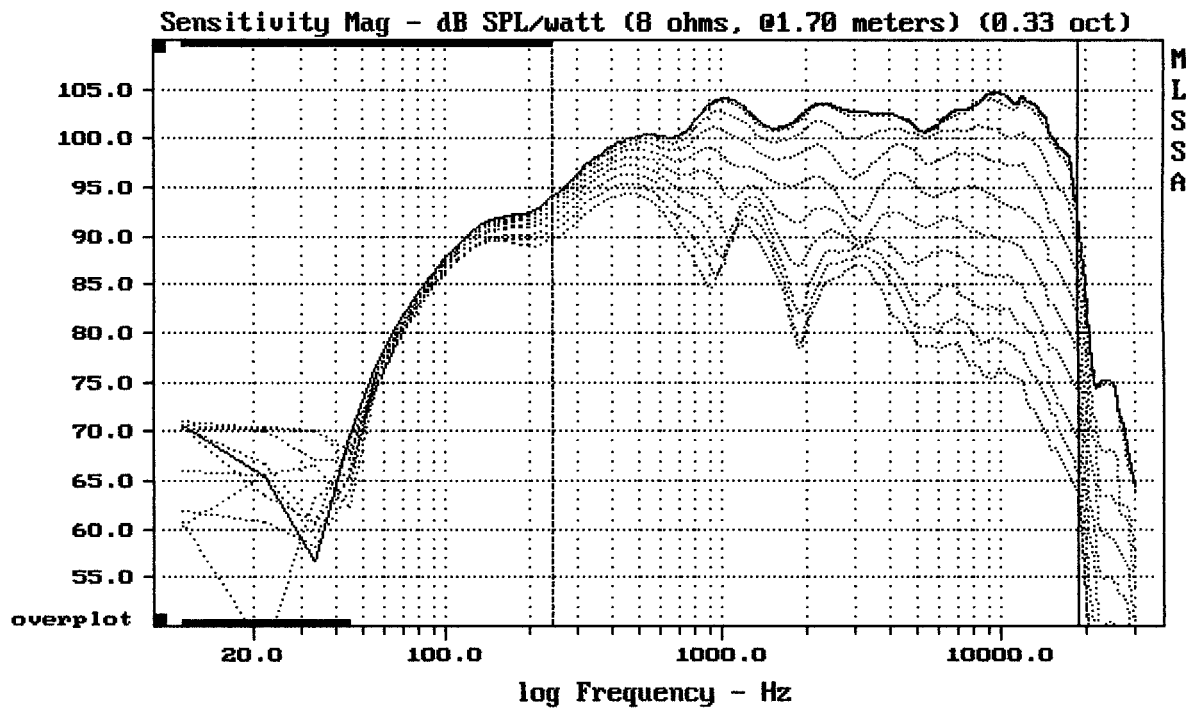
CX10N251



Level (244:18999 Hz) = 102.23 dB SPL/watt (8 ohms, @1.70 meters) (0.33 oct)

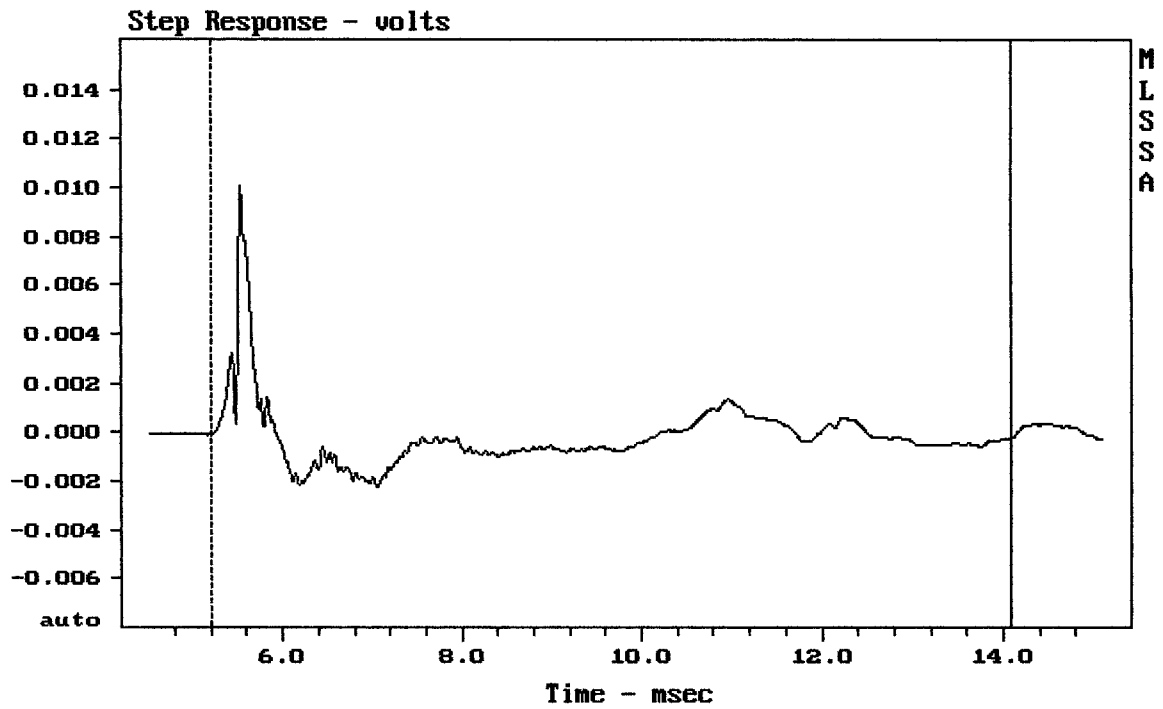
CX10N251

MLSSA: Frequency Domain



Overlay Compare: dev= +22/-6.8, std= 6.4, avg= -26

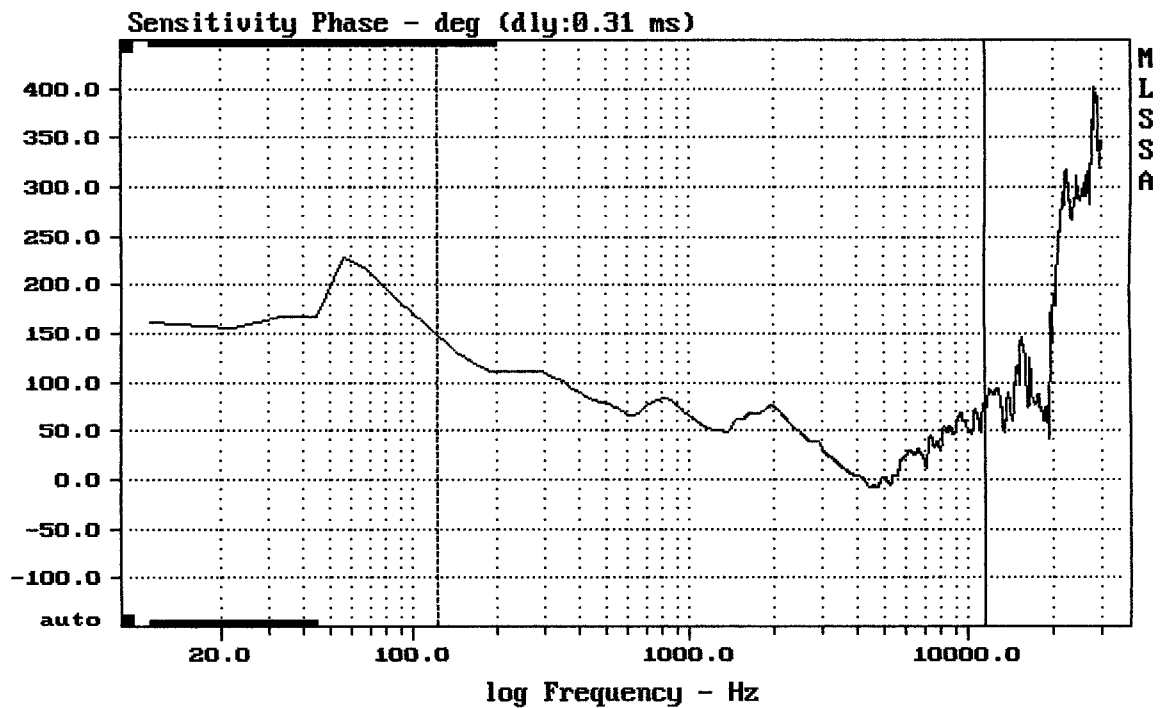
CX10N251



mean: -0.0001997, rms: 0.001346, std: 0.001331, max: 0.01007, min: -0.002226

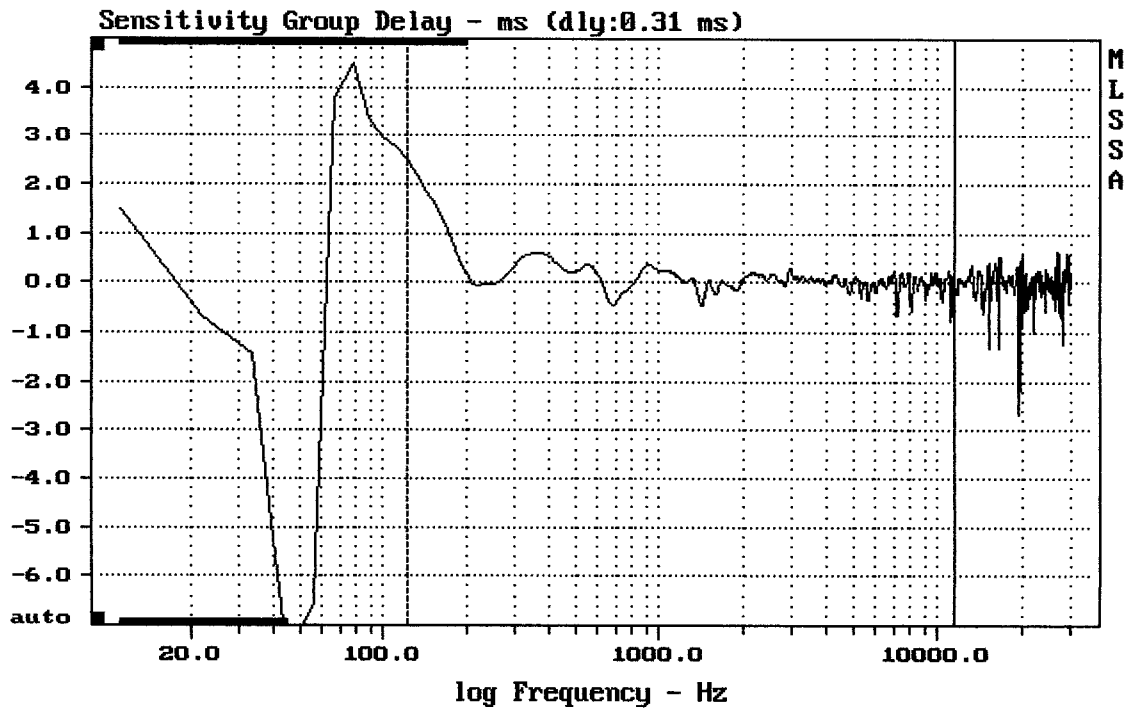
CX10N251

MLSSA: Time Domain



mean: 41.16, rms: 49.35, std: 27.23, max: 148.8, min: -8.515

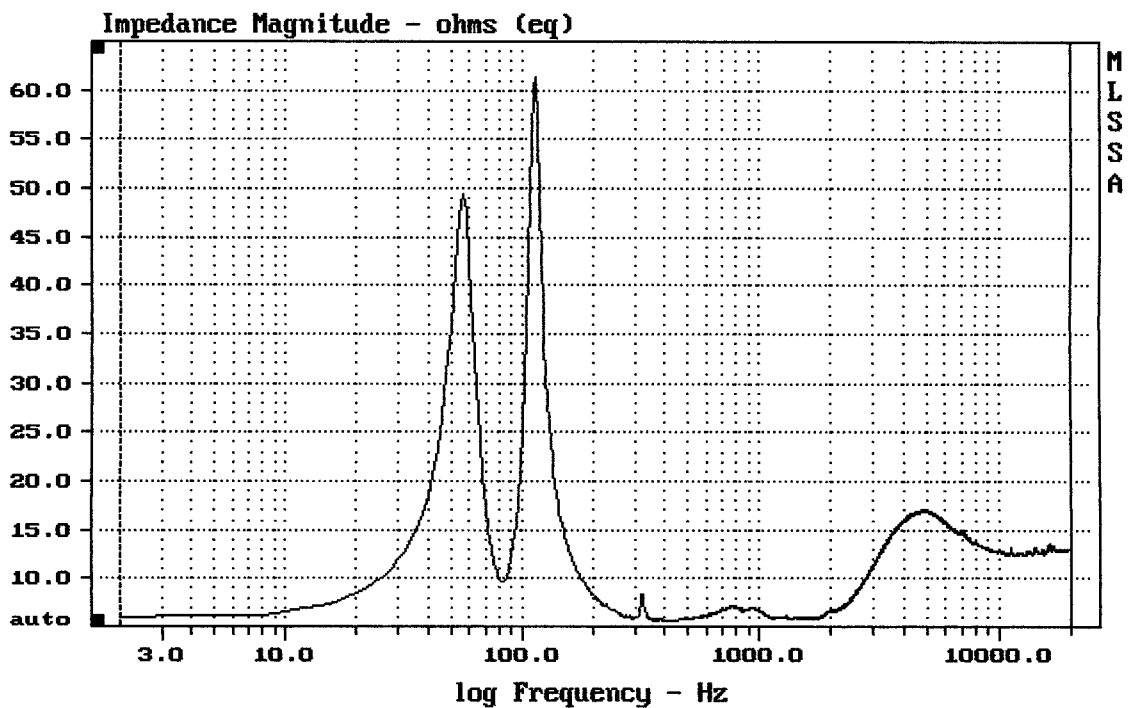
CX10N251



mean: 0.02015, rms: 0.2266, std: 0.2257, max: 2.494, min: -0.7538

CX10N251

MLSSA: Frequency Domain



mean: 12.69, rms: 13.05, std: 3.052, max: 61.35, min: 5.512

CX10N251