

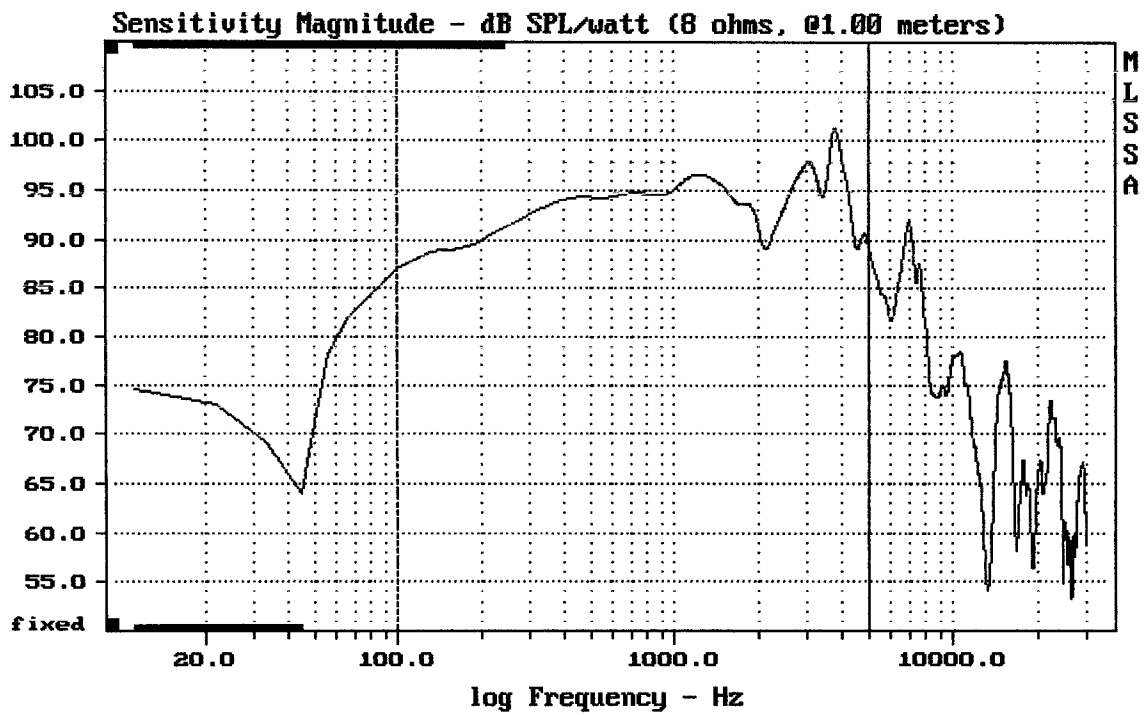
# **Koaxiální reproduktor B&C Speakers 8CXN51**

<http://eshop.prodance.cz/DetailPage.asp?DPG=94750>

Doporučená výhybka:

**B&C Speakers XO-1**

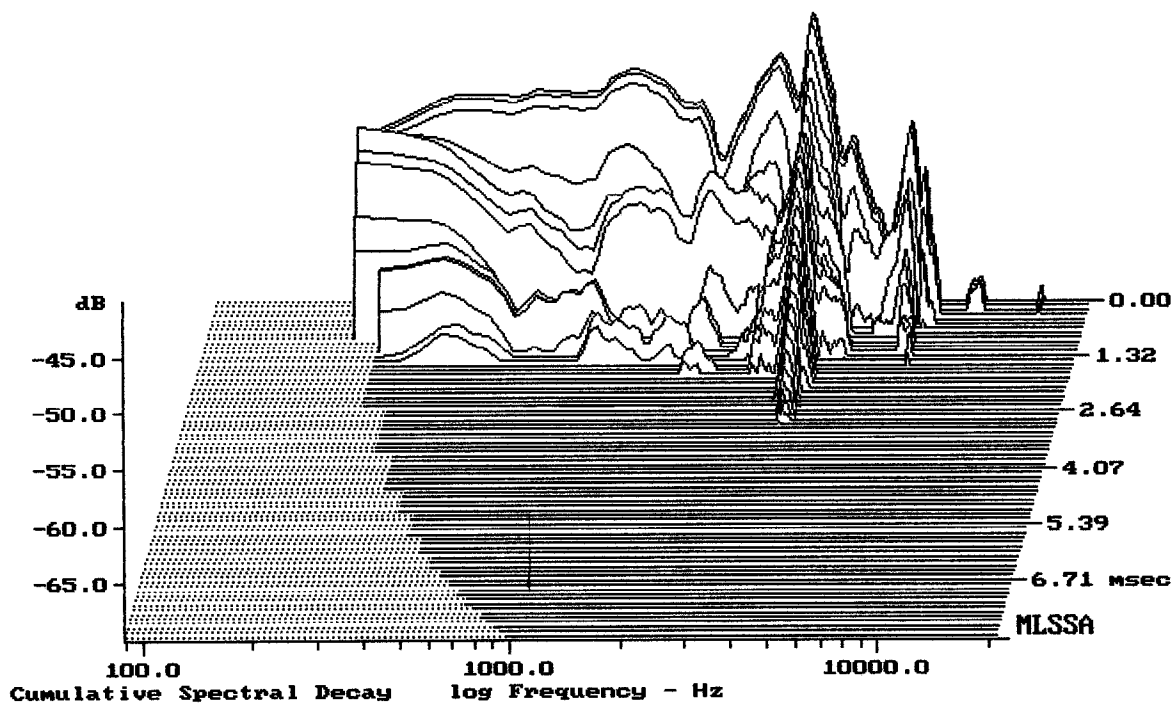
<http://eshop.prodance.cz/DetailPage.asp?DPG=78354>



Level (100:5005 Hz) = 94.05 dB SPL/watt (8 ohms, @1.00 meters)

8CXN51

MLSSA: Frequency Domain



-68.42 dB, 3729 Hz (84), 2.860 msec (27)

Measured Data

QC Limits

Line	Parameter	Value	Units
1	RMSE-free	0.53	Ohms
2	Fs	76.75	Hz
3	Re	4.79	Ohms[dc]
4	Res	87.38	Ohms
5	Qms	6.09	
6	Qes	0.33	
7	Qts	0.32	
8	L1	0.52	mH
9	L2	0.78	mH
10	R2	2.62	Ohms
11	RMSE-load	0.66	Ohms
12	Vas(Sd)	15.82	liters
13	Mms	15.43	grams
14	Cms	279	$\mu$ M/Newton
15	Bl	10.33	Tesla-M
16	SPLref(Sd)	95.1	dB[Re]
17	Rub-index	0.02	

Method: Mass-loaded (10.00 grams)

Area (Sd): 201.06 sq cm

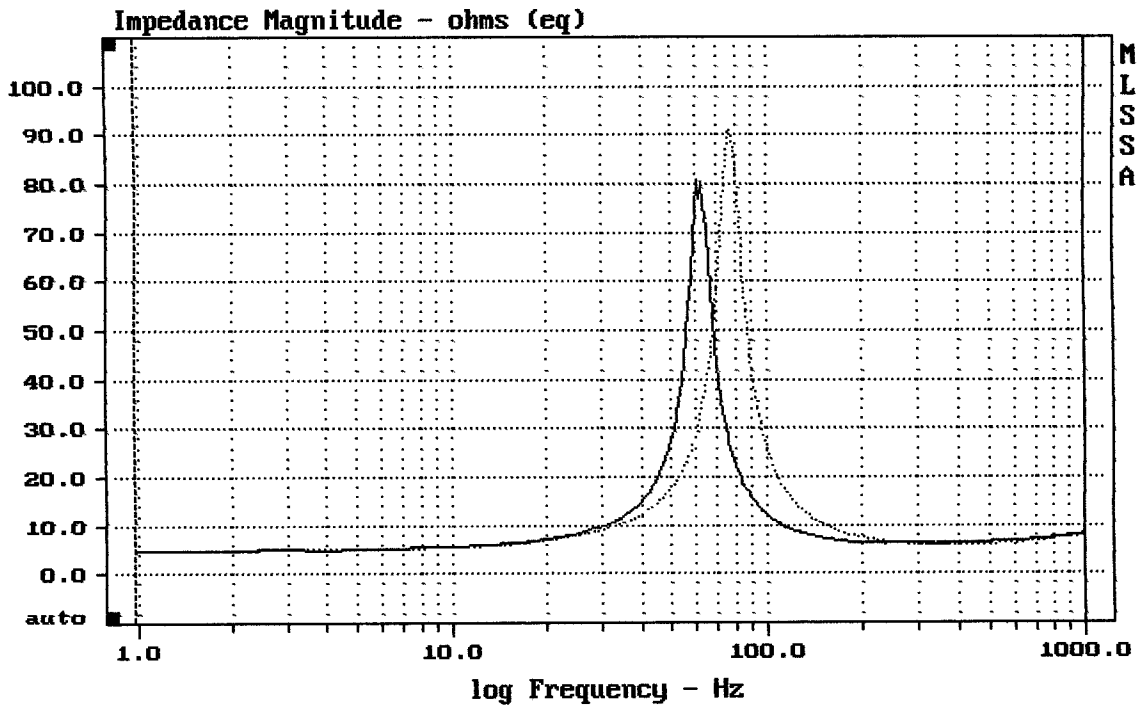
DCR mode: Measure (-0.14 ohms)

QC file: CLOSED

Analysis successful. Shift in Fs = -19.7% (-20% to -50% is recommended).

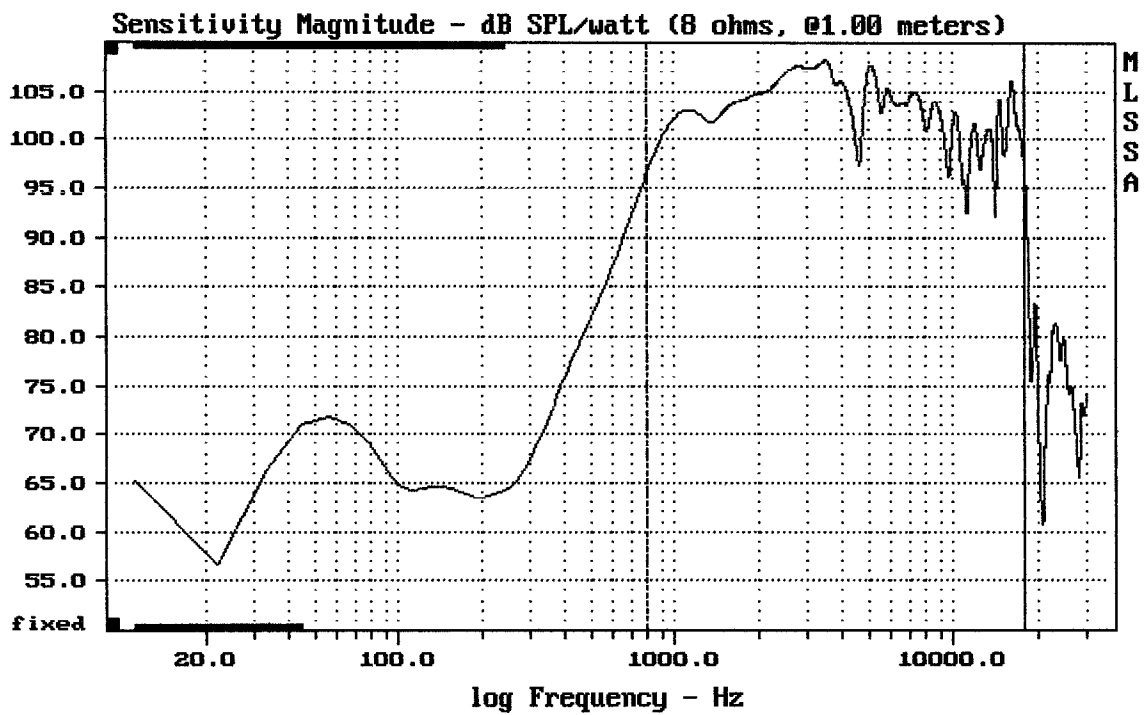
8CXN51

MLSSA: Parameters



mean: 9.361, rms: 14.05, std: 10.40, max: 90.84, min: 4.94

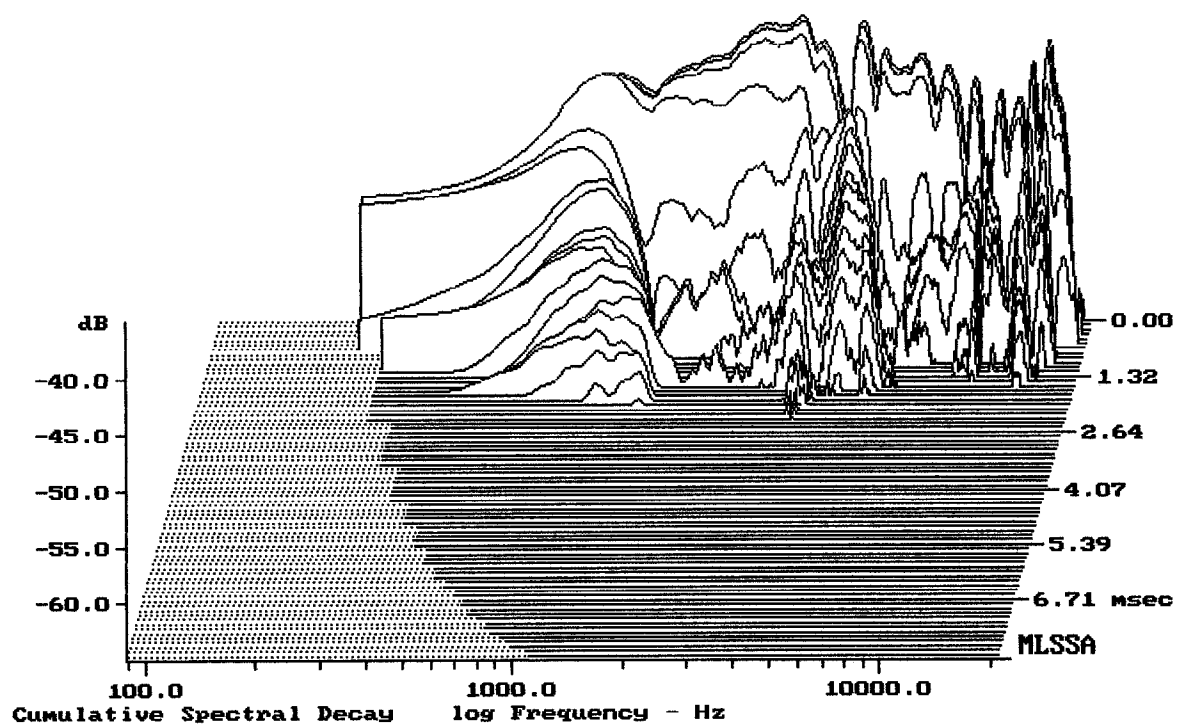
MLSSA: Frequency Domain



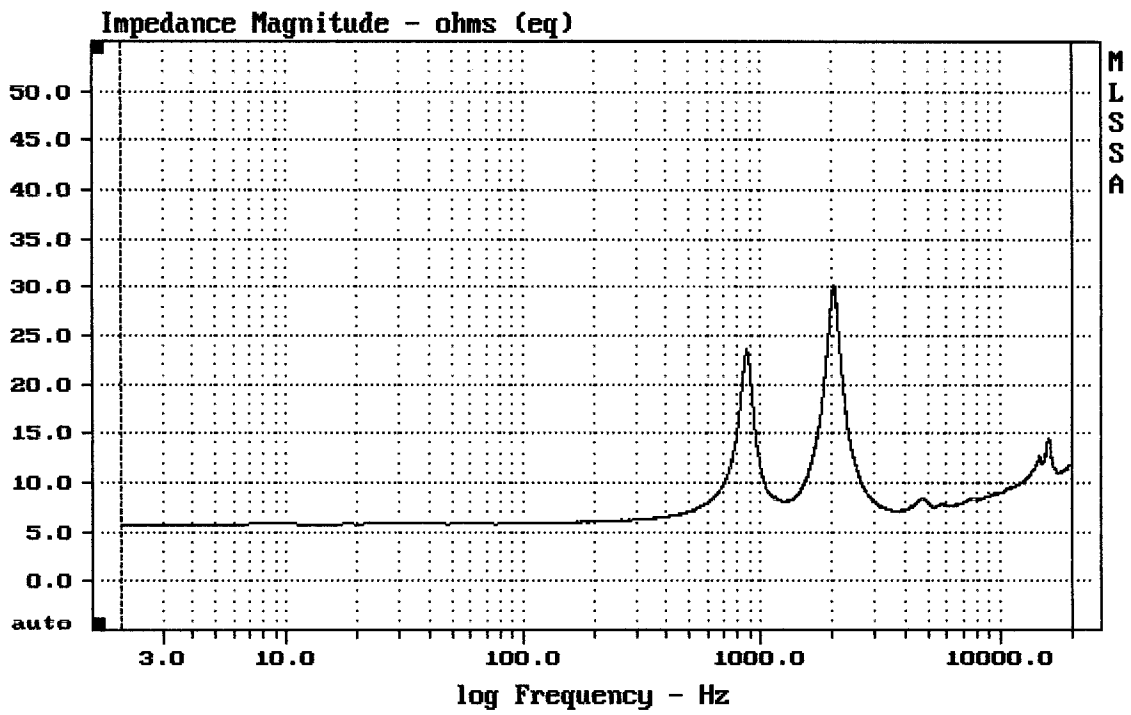
Level (799:18011 Hz) = 104.09 dB SPL/watt (8 ohms, @1.00 meters)

BCXN51

MLSSA: Frequency Domain

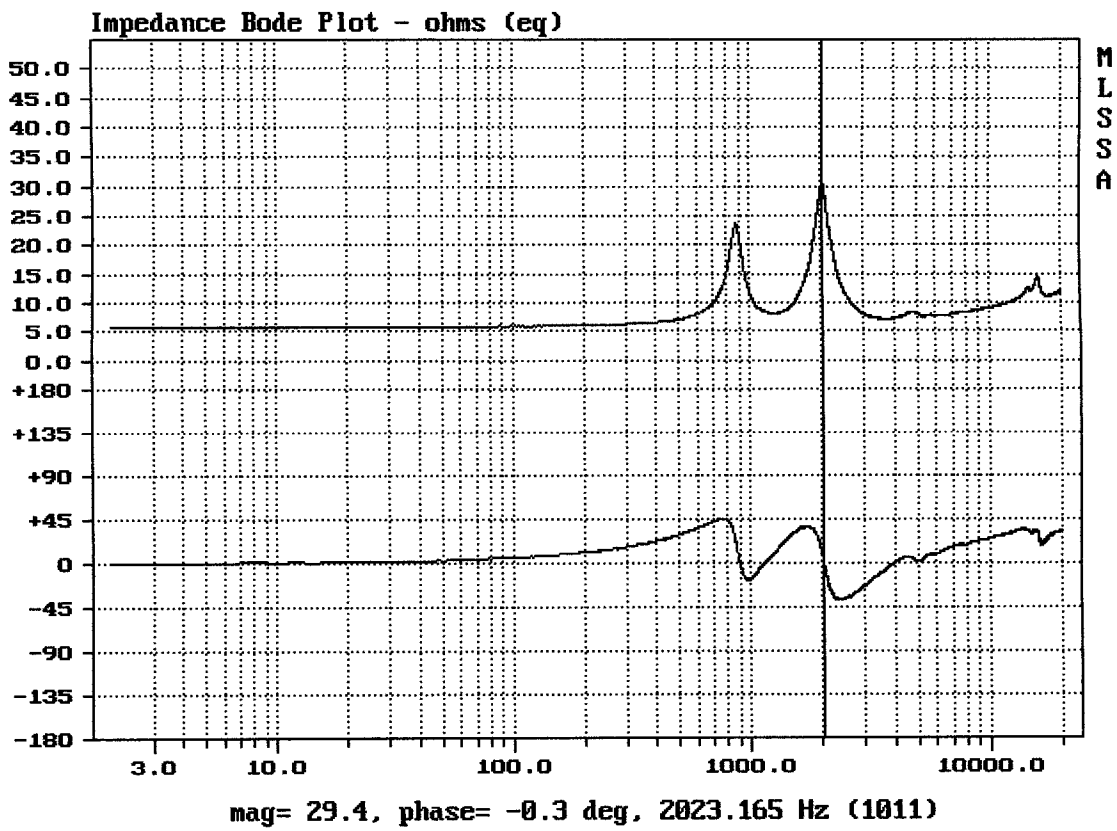


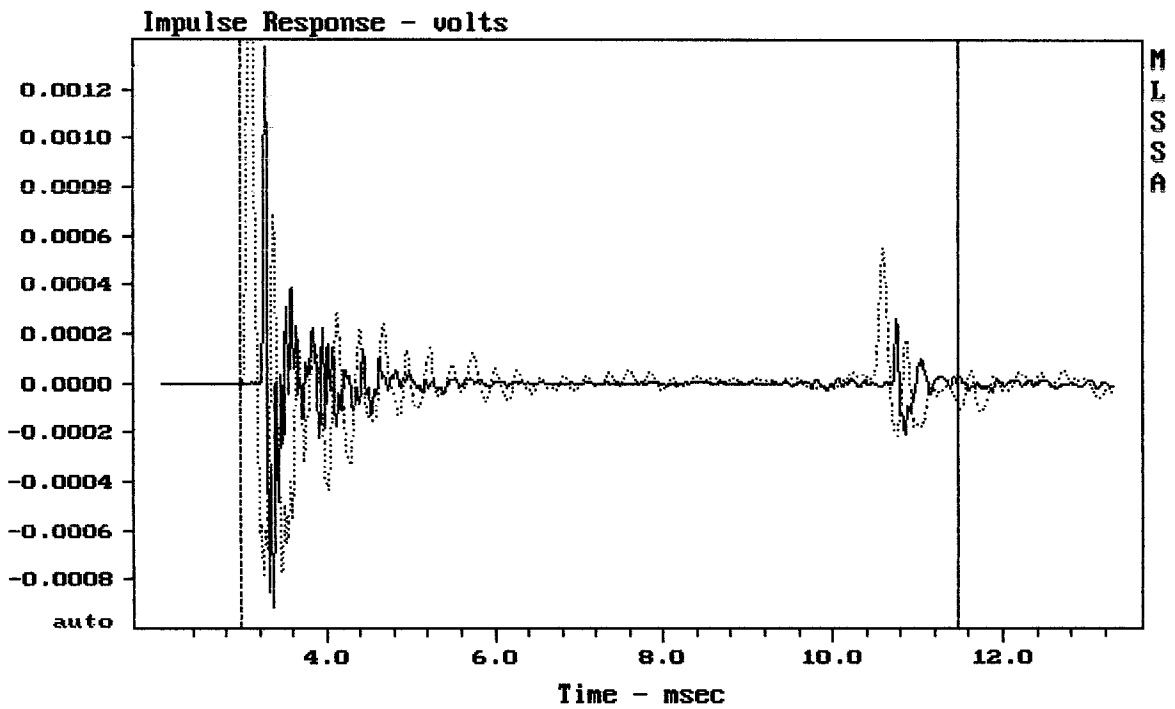
-64.52 dB, 3684 Hz (83), 2.090 msec (20)



8CXN51

MLSSA: Frequency Domain





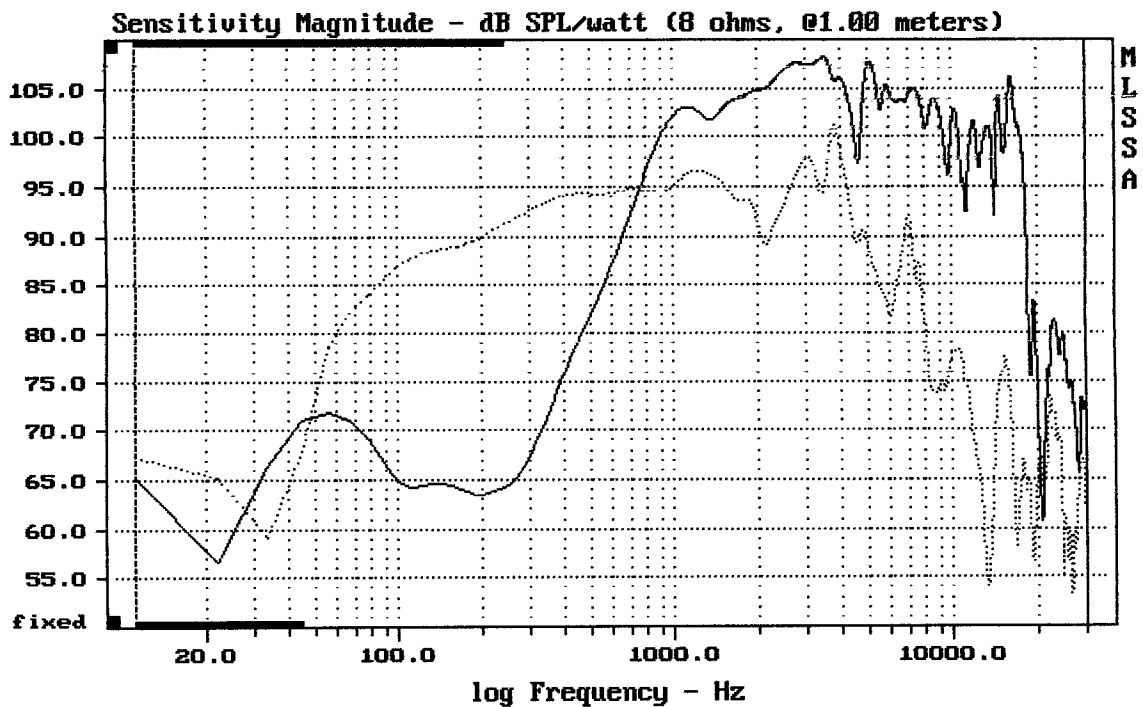

---

mean:  $-2.11e-007$ , rms: 0.0002388, std: 0.0002388, max: 0.002194, min: -0.00078

---

8CXN51

MLSSA: Time Domain

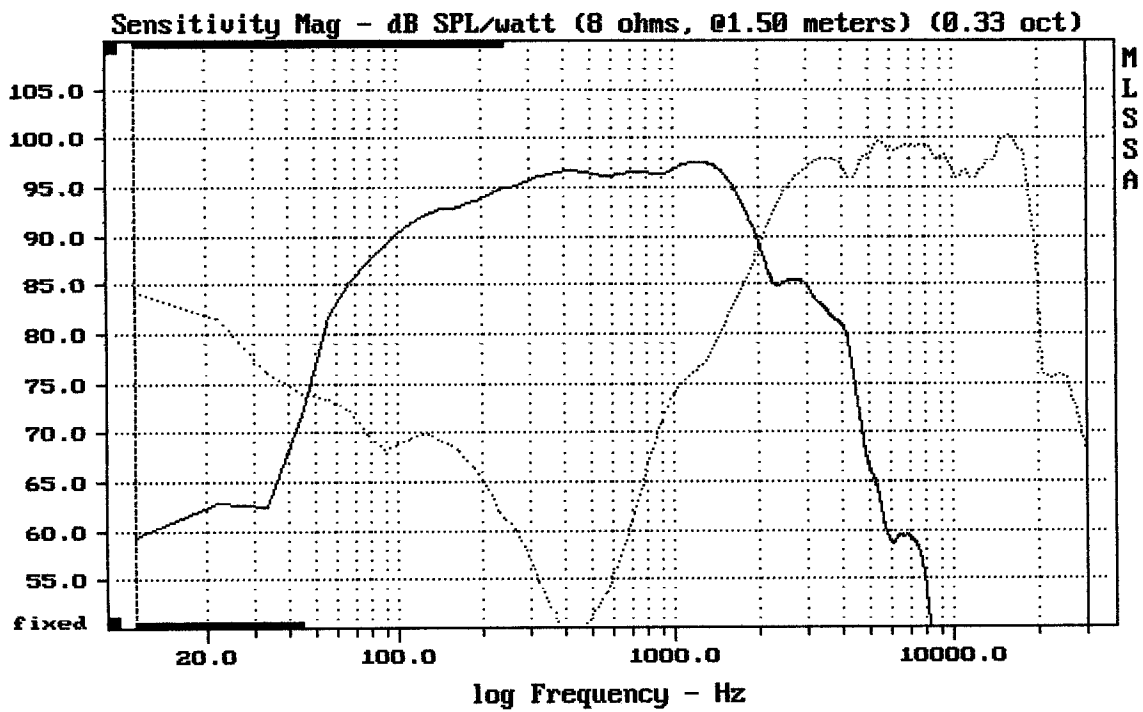



---

CURSOR:  $dy = -15.3184$   $x = 30007.1014$  (2704)

---

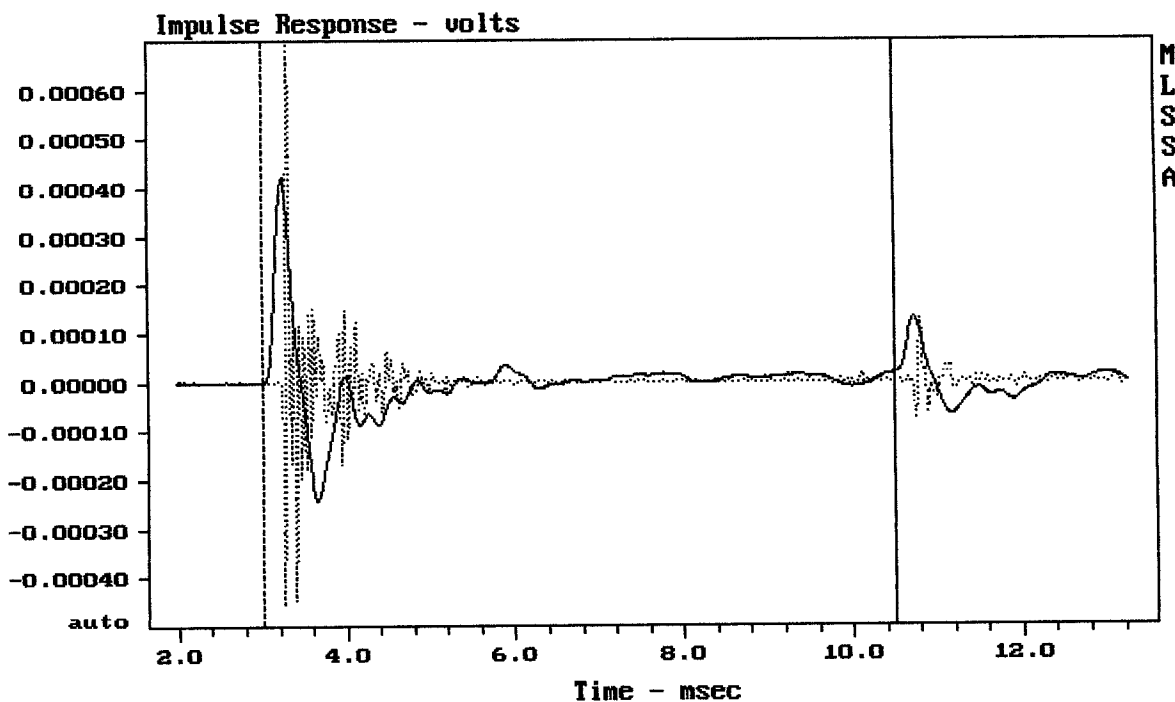
8CXN51



CURSOR: dy = 37.027 x = 30007.1014 (2704)

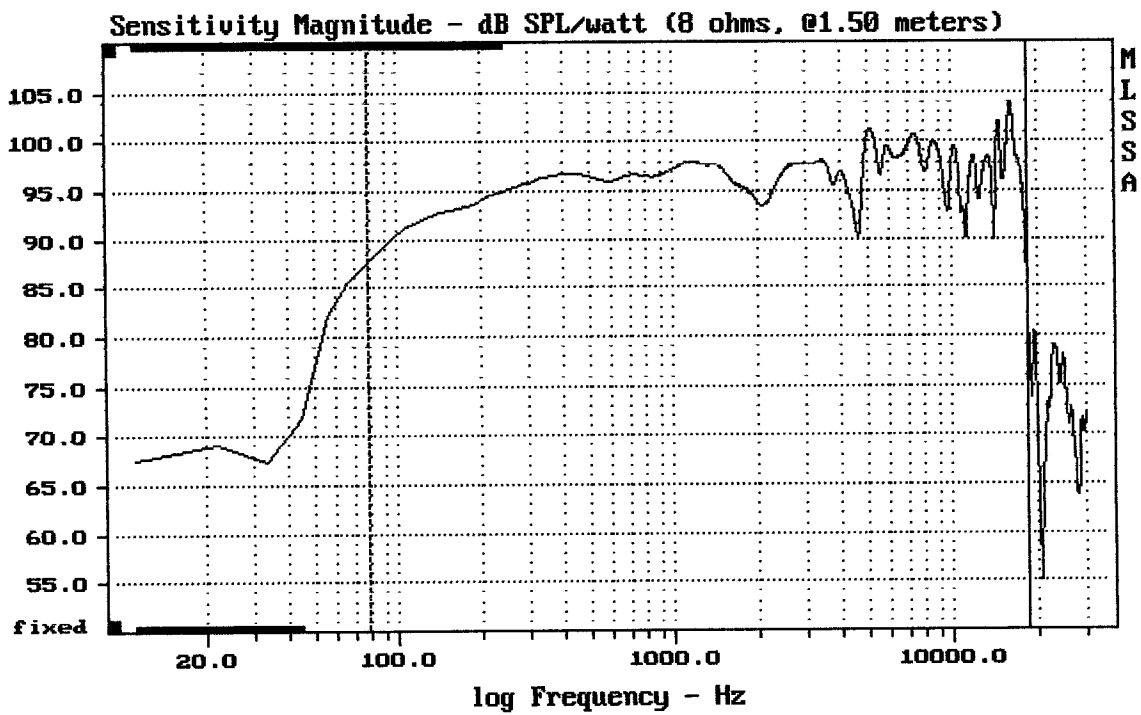
BCXN51 + X0-1

MLSSA: Frequency Domain



CURSOR: dy = -1.28882e-005 x = 10.5050 (955)

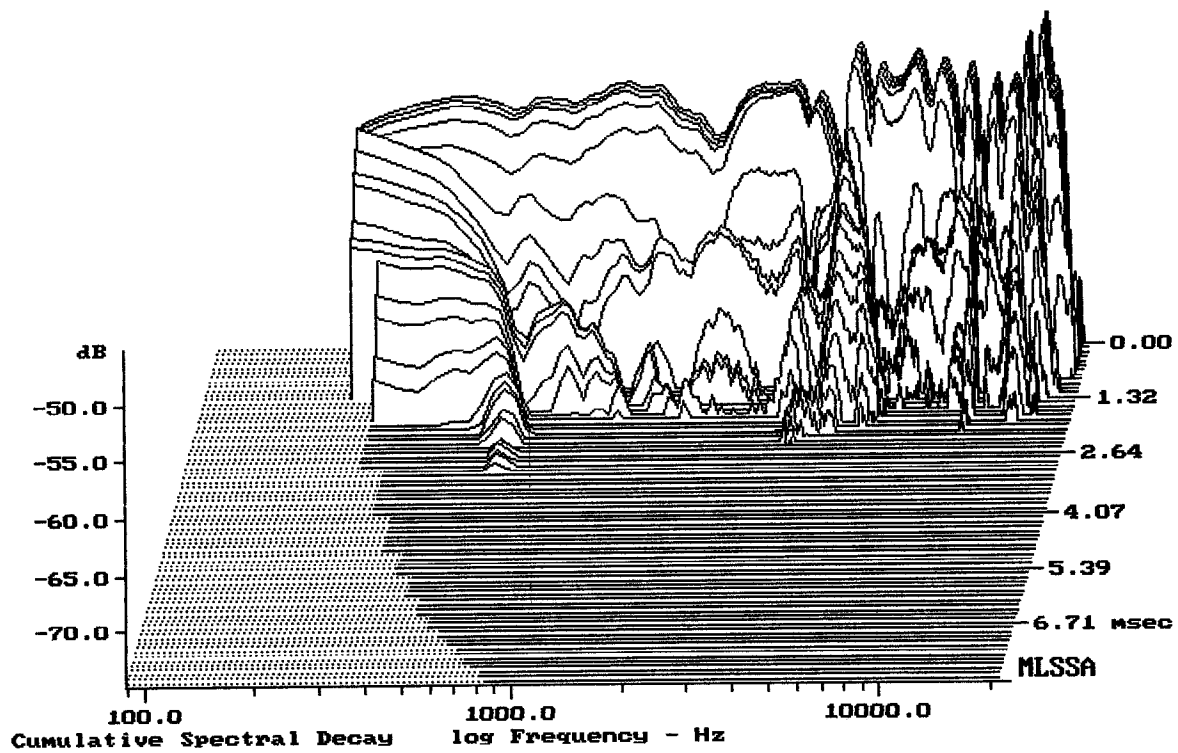
BCXN51 + X0-1



Level (78:18499 Hz) = 96.58 dB SPL/watt (8 ohms, @1.50 meters)

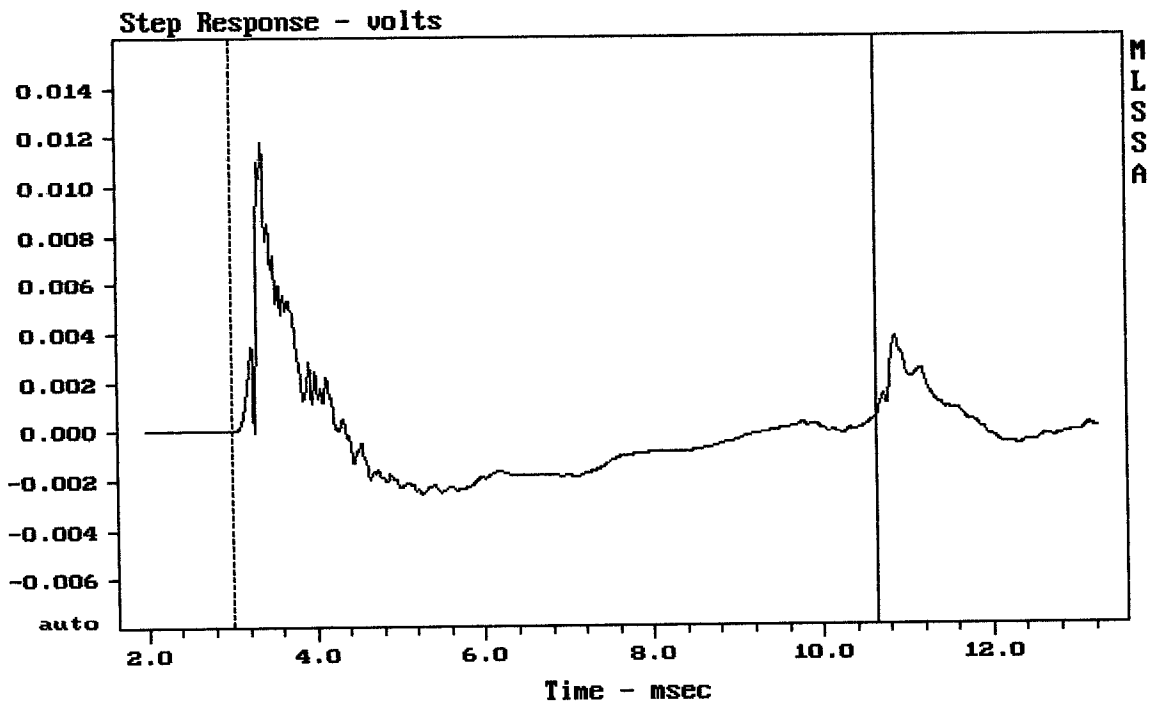
8CXN51 + X0-1

MLSSA: Frequency Domain



-74.11 dB, 3684 Hz (83), 2.310 msec (22)

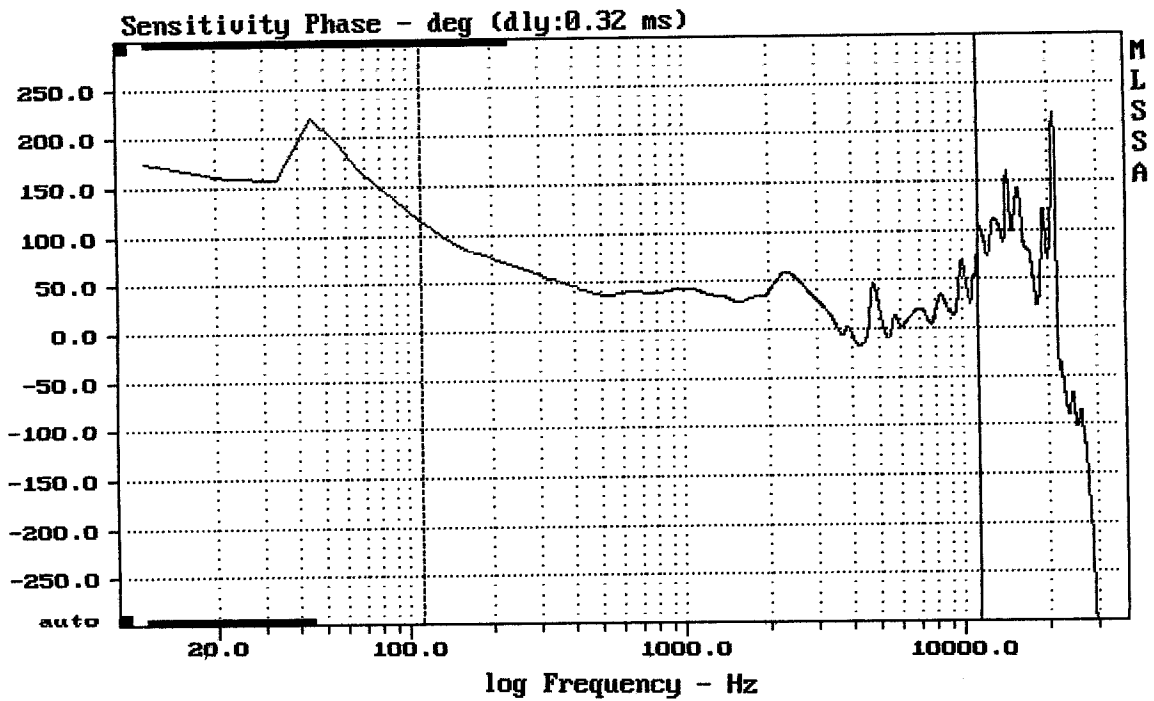




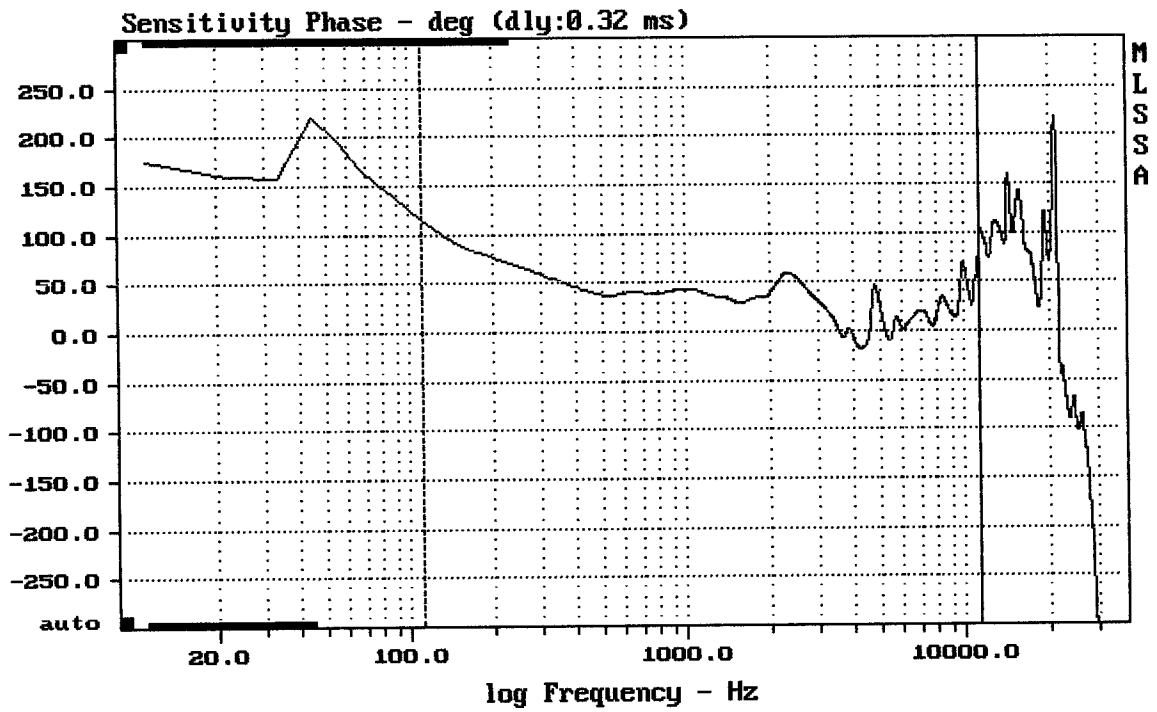
mean: -0.0003823, rms: 0.002266, std: 0.002233, max: 0.01177, min: -0.002591

BCXN51 + X0-1

MLSSA: Time Domain



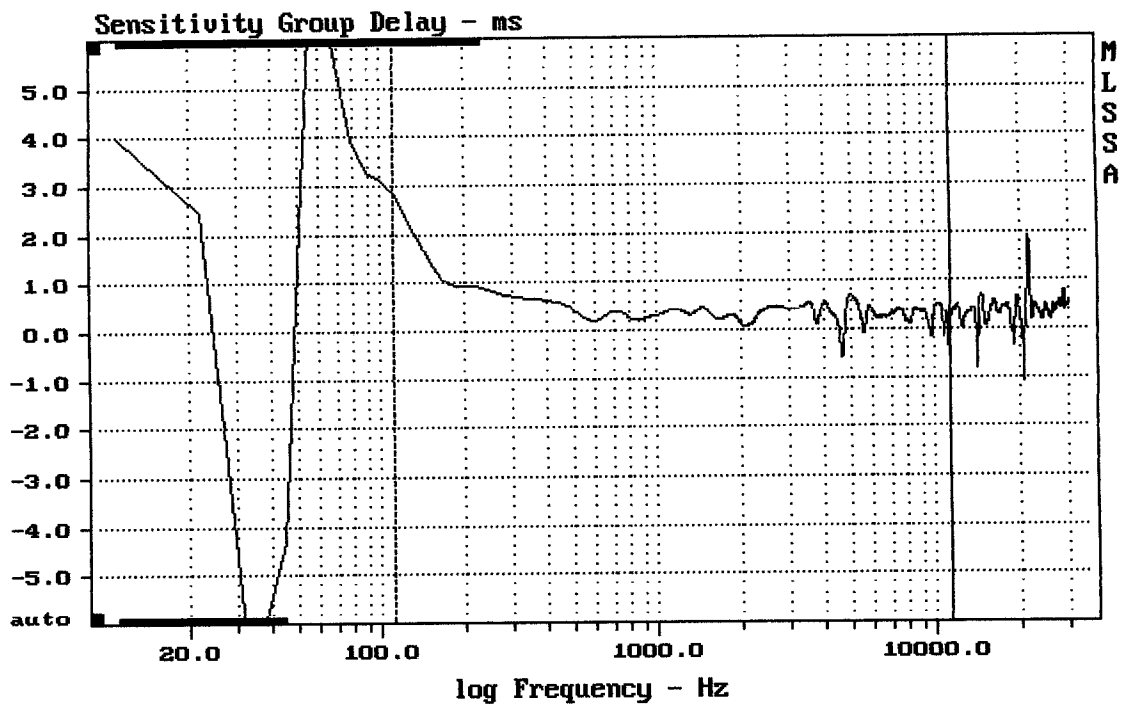
BCXN51 + X0-1 mean: 26.23, rms: 34.25, std: 22.01, max: 115.5, min: -17.12



mean: 26.23, rms: 34.25, std: 22.01, max: 115.5, min: -17.12

8CXN51 + X0-1

MLSSA: Frequency Domain



mean: 0.328, rms: 0.4084, std: 0.2434, max: 2.833, min: -0.5738

8CXN51 + X0-1