

Sestava: B&C Speakers 15CL76 + Selenium D3300Ti + Megaton C8045

Osazení:

- B&C Speakers 15CL76 8/ohm

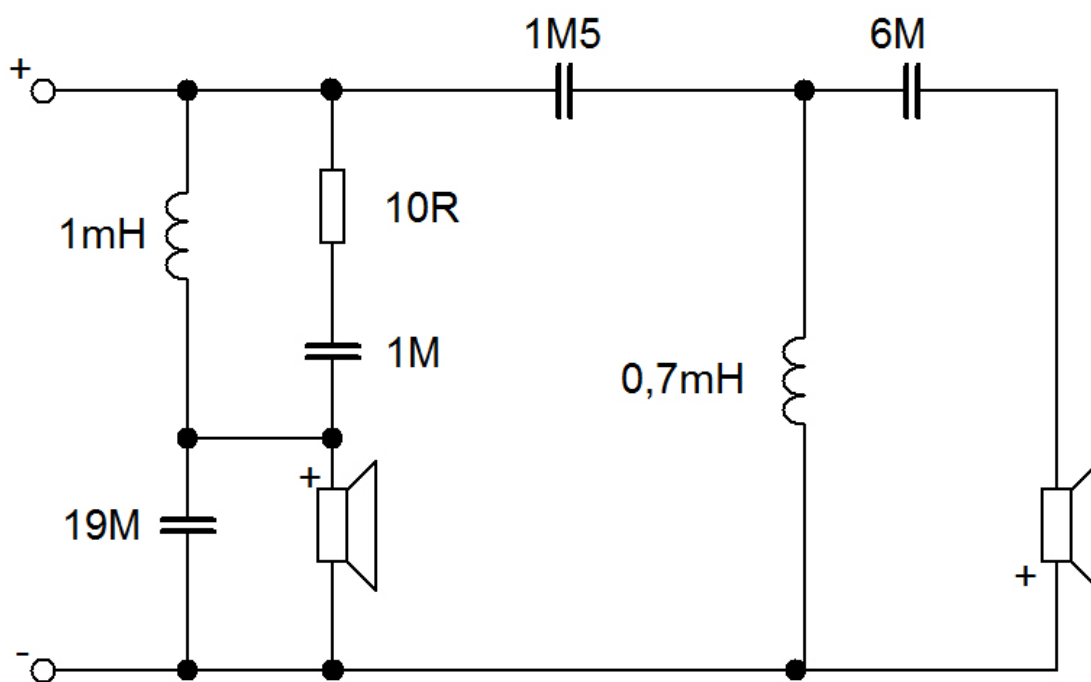
<http://eshop.prodance.cz/15cl76-8-ohm/d-94746/>

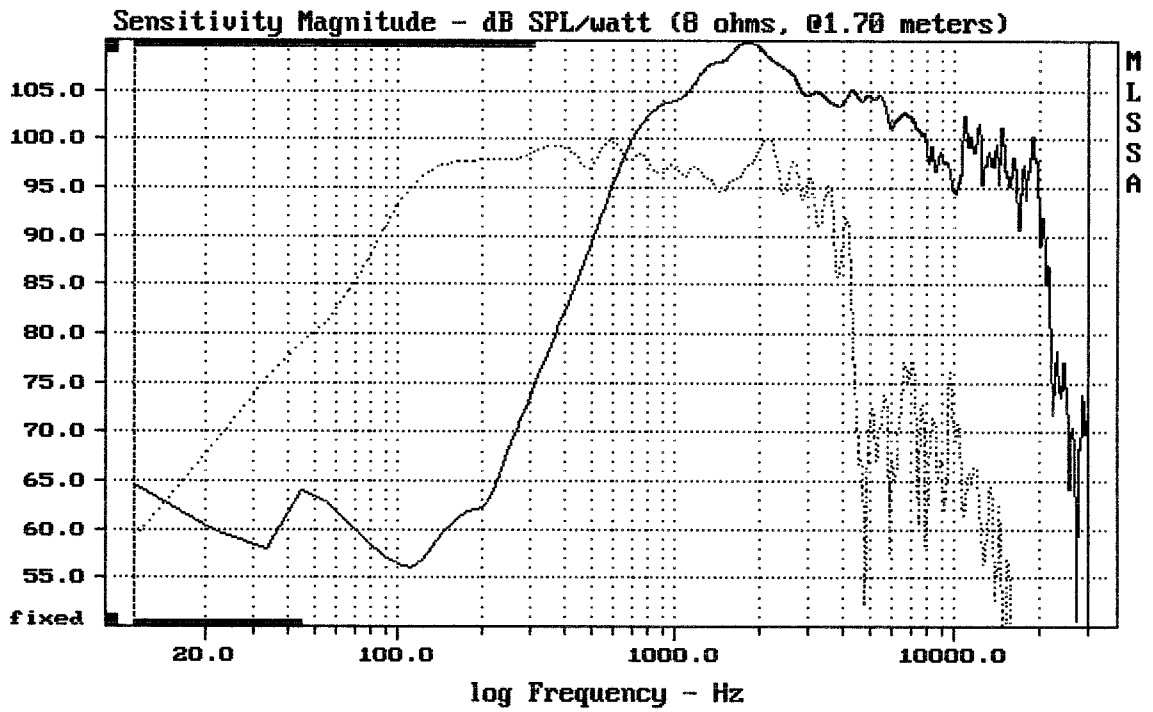
- Selenium D3300Ti 16/ohm

<http://eshop.prodance.cz/d3300ti-16-ohm/d-97479/>

- Megaton C9060 zvukovod

Schéma výhybky:

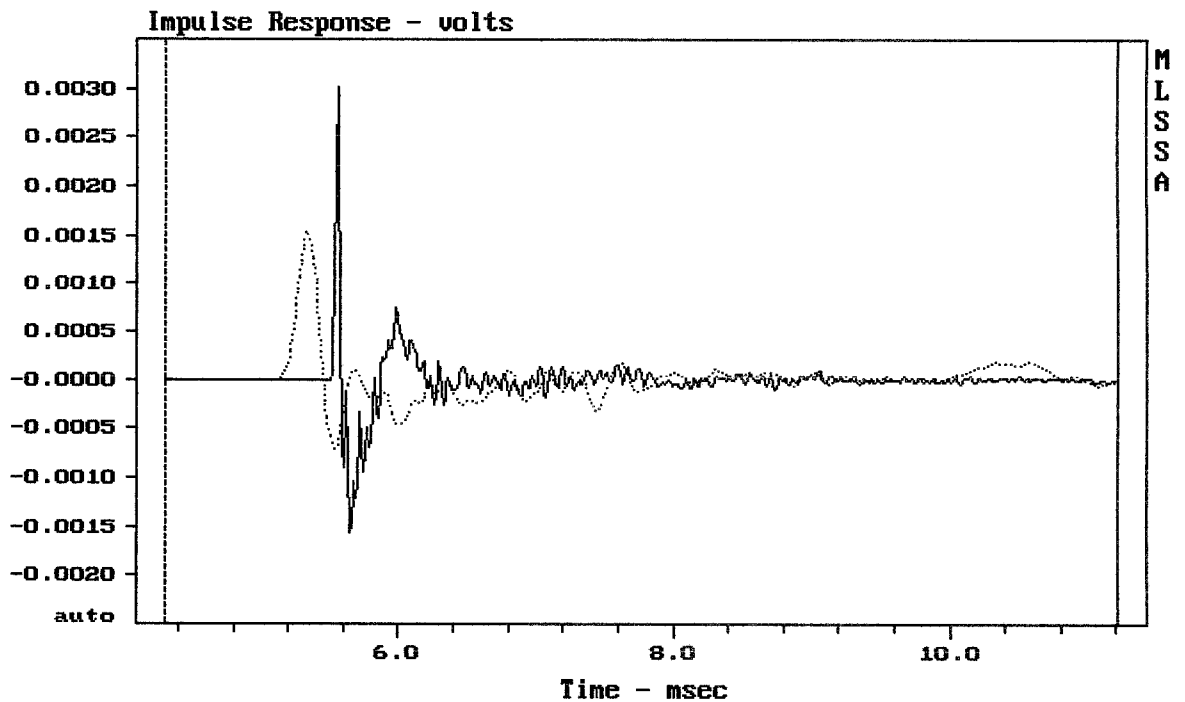




CURSOR: $dy = -43.3126$ $x = 30007.1014$ (2704)

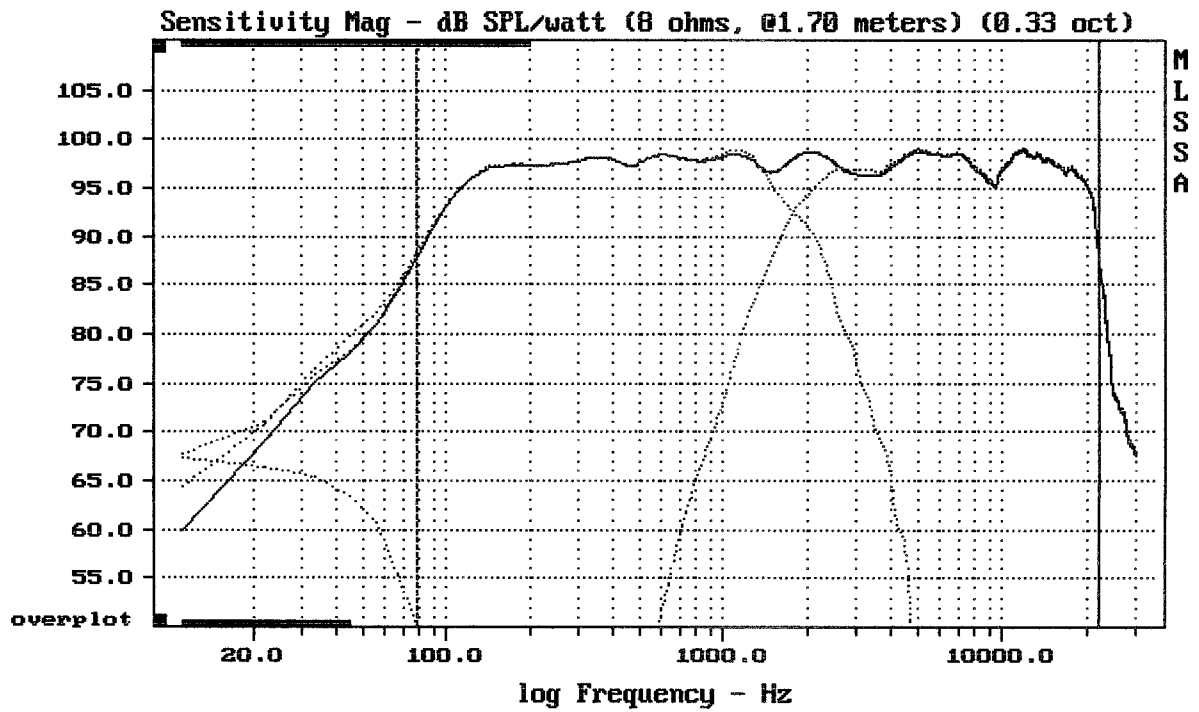
15CL76 + D3300TI/16 + C9060

MLSSA: Frequency Domain



CURSOR: $dy = 2.08855e-006$ $x = 11.2090$ (1019)

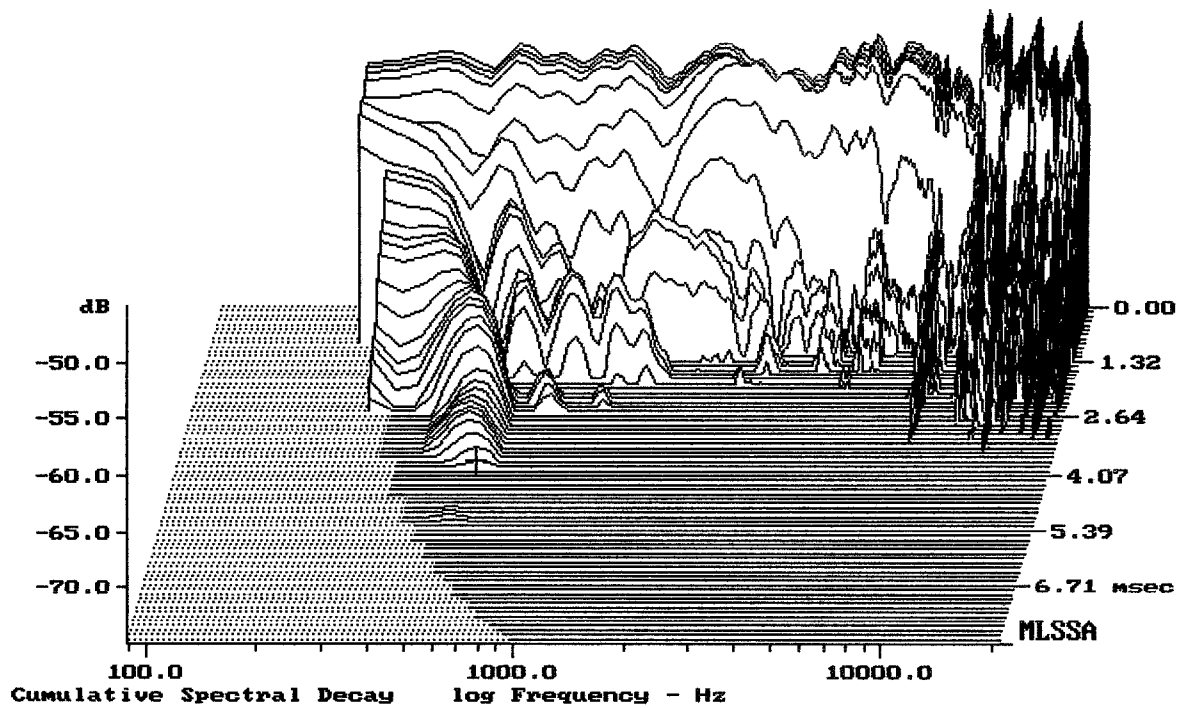
15CL76 + D3300TI/16 + C9060



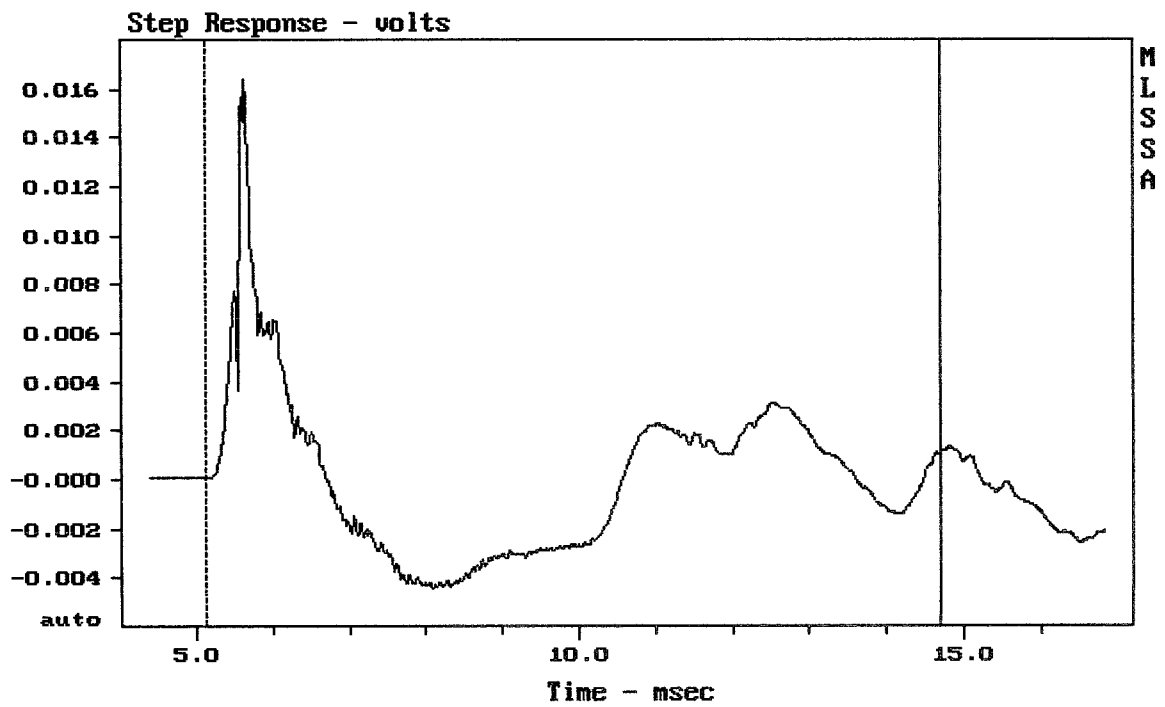
Level (78:22006 Hz) = 97.41 dB SPL/watt (8 ohms, @1.70 meters) (0.33 oct)

15CL76 + D3300TI/16 + C9060

MLSSA: Frequency Domain



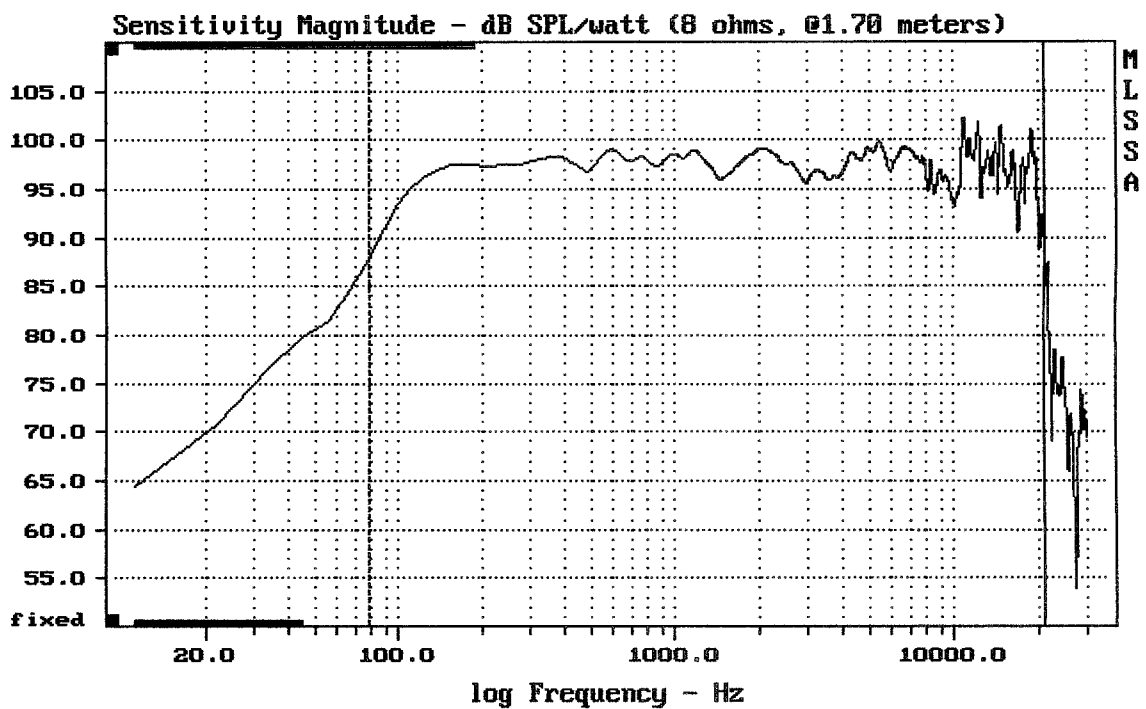
-74.46 dB, 577 Hz (13), 3.850 msec (36)



mean: 3.733e-005, rms: 0.003289, std: 0.003289, max: 0.01633, min: -0.004435

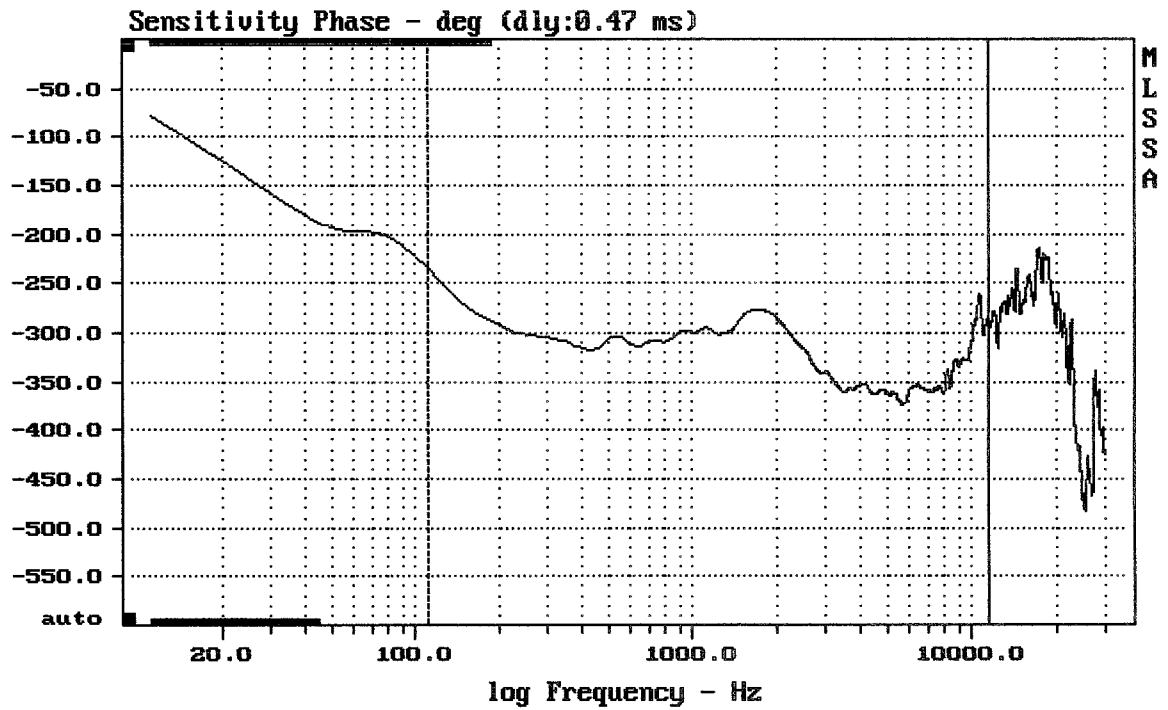
15CL76 + D3300TI/16 + C9060

MLSSA: Time Domain



mean: 97.39, rms: 97.64, std: 1.87, max: 102.17, min: 87.87

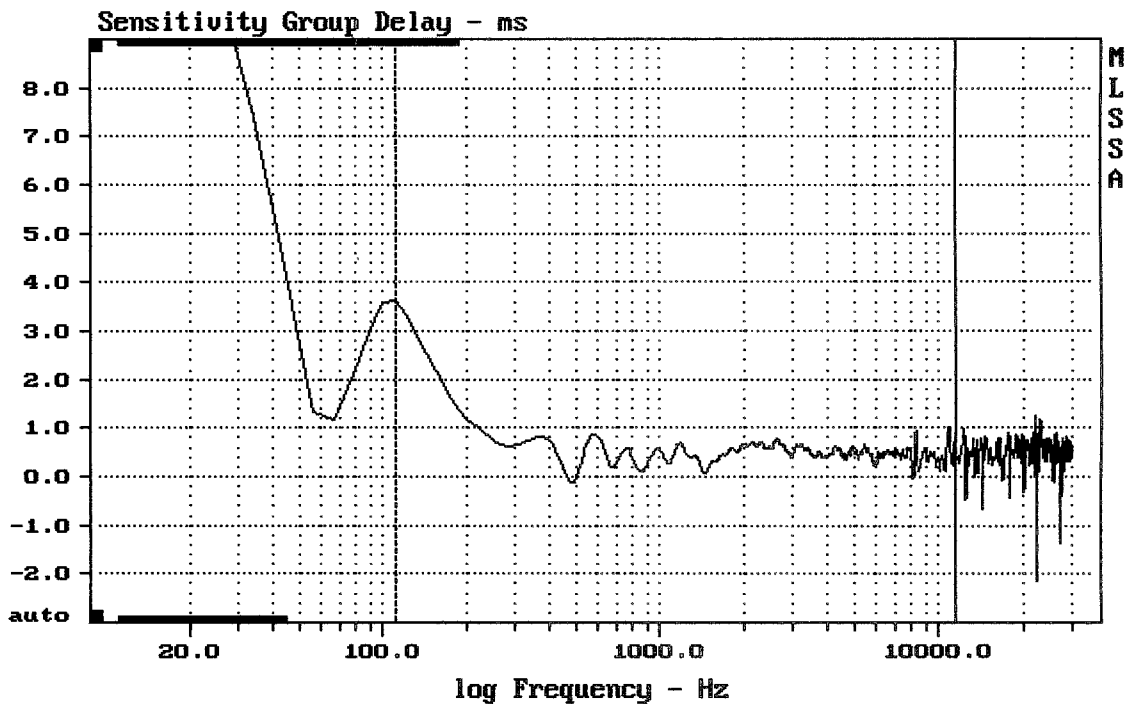
15CL76 + D3300TI/16 + C9060



mean: -330, rms: 331.4, std: 30.78, max: -234.5, min: -373.4

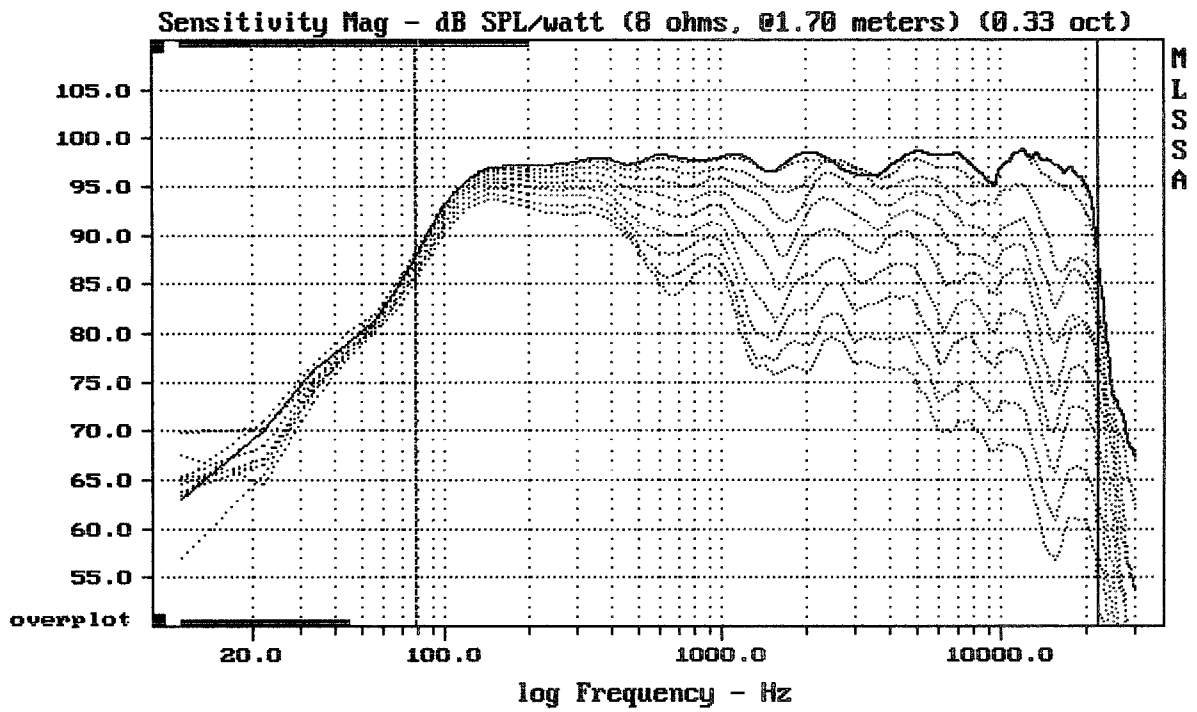
15CL76 + D3300T1/16 + C9060

MLSSA: Frequency Domain



mean: 0.4843, rms: 0.5453, std: 0.2506, max: 3.64, min: -0.1198

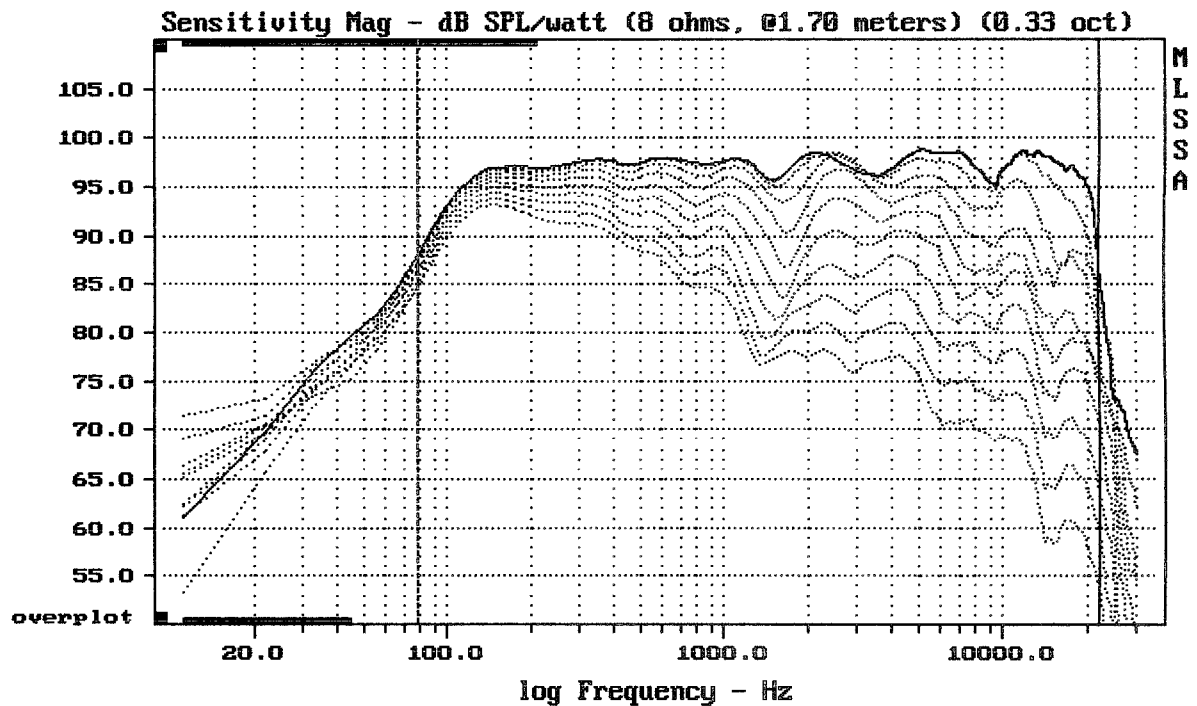
15CL76 + D3300T1/16 + C9060



Overlay Compare: dev= +27/-11, std= 7.7, avg= -29

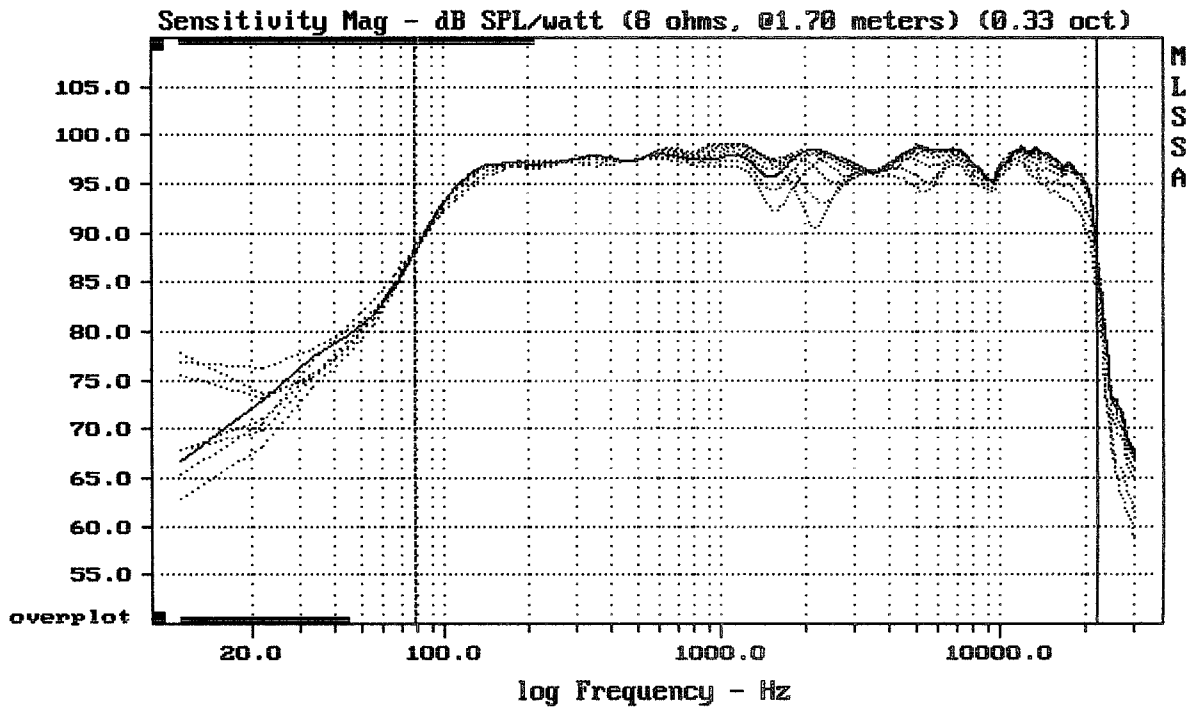
15CL76 + D3300TI/16 + C9060

MLSSA: Frequency Domain



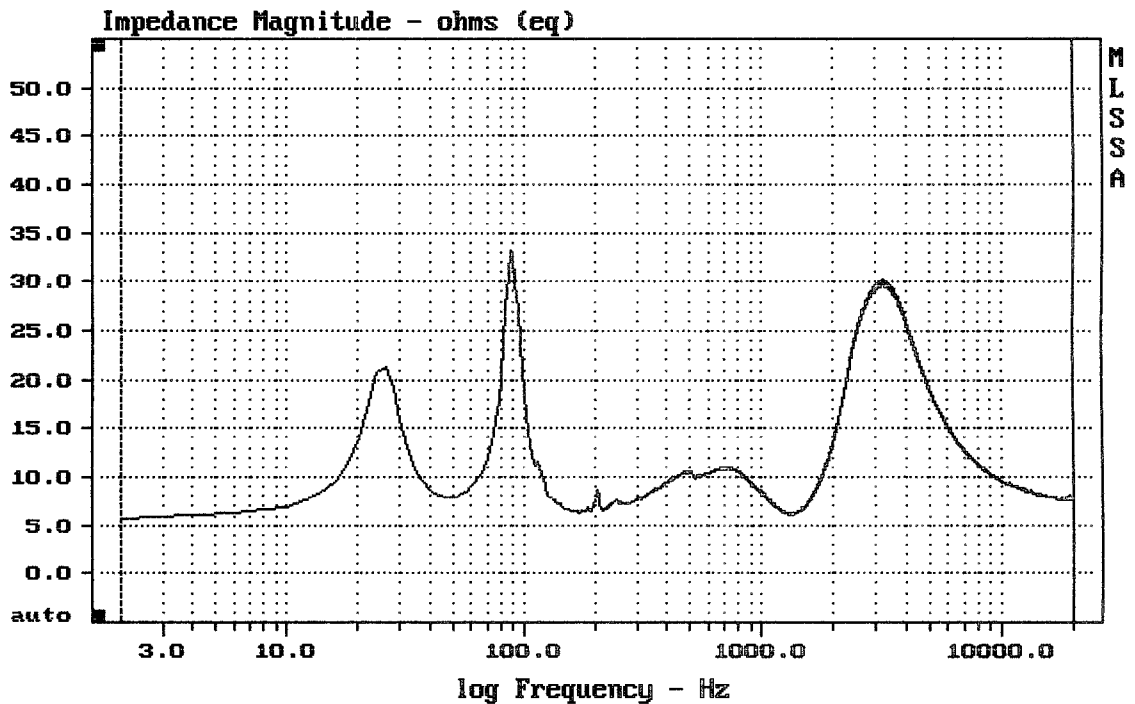
Overlay Compare: dev= +26/-10, std= 7.9, avg= -29

15CL76 + D3300TI/16 + C9060



15CL76 + D3300TI/16 + C9060

MLSSA: Frequency Domain



15CL76 + D3300TI/16 + C9060