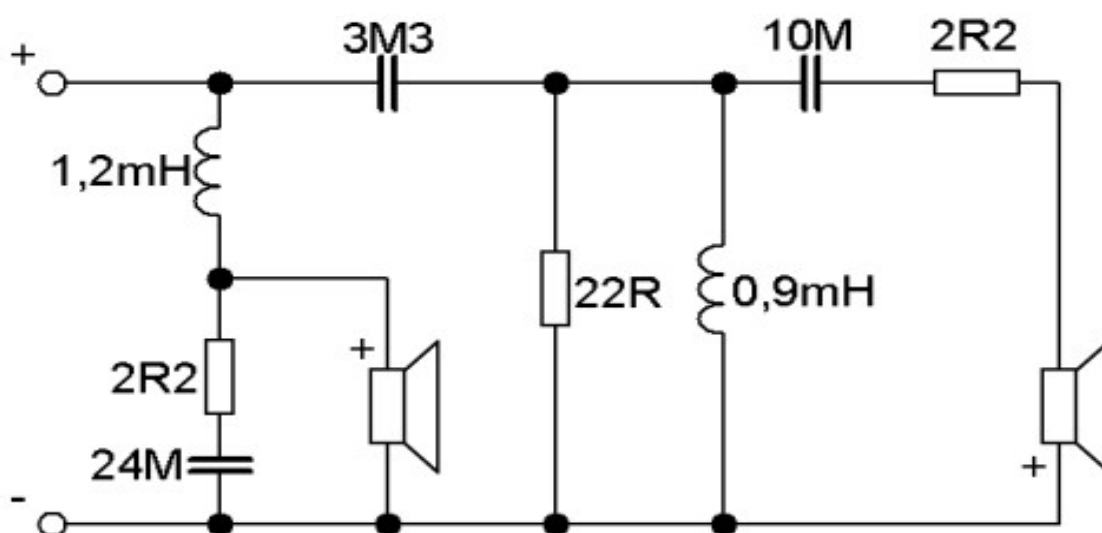


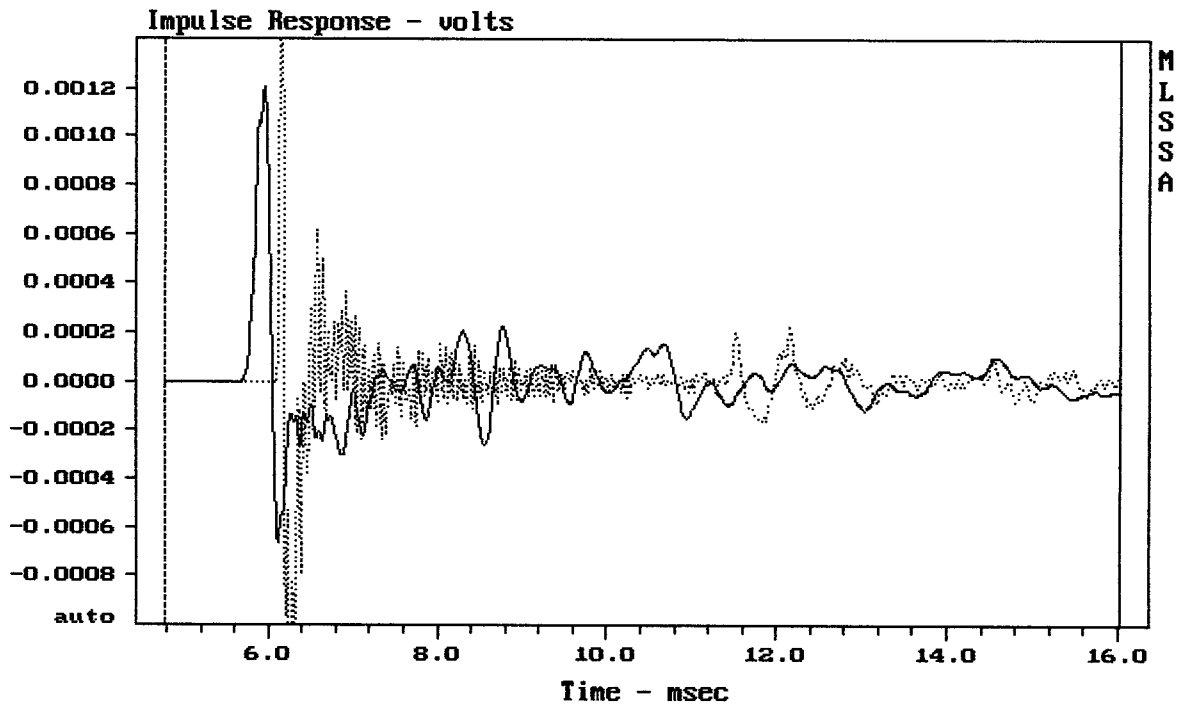
## Sestava MB15N407 + ND3030T3 + B8575

### Osazení:

- RCF MB15N407:  
<http://eshop.prodance.cz/mb15n407-8-ohm/d-95079/>
- RCF ND3030T3:  
<http://eshop.prodance.cz/nd3030t3-8-ohm/d-79637/>
- Megaton B8575  
<http://eshop.prodance.cz/b8575-zvukovod/d-84261/>

### Schéma výhybky:

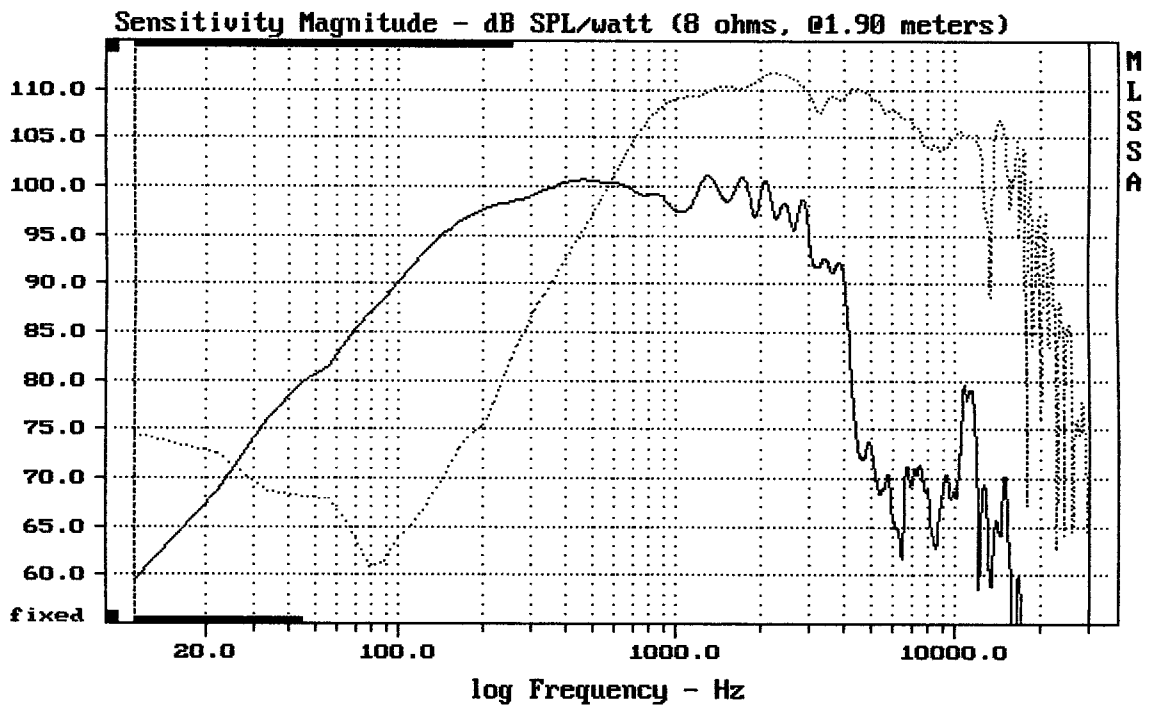




CURSOR: dy = 4.83831e-005 x = 16.0270 (1457)

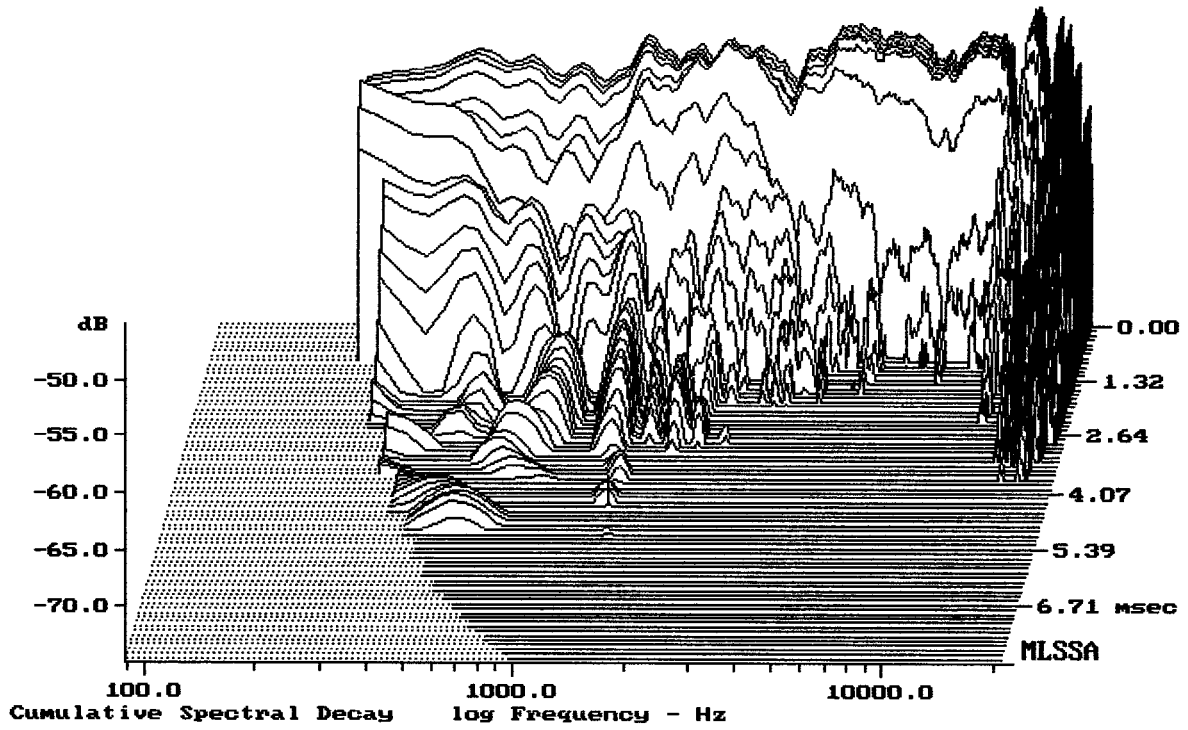
MB15N407 + ND3030T3 + B8575

MLSSA: Time Domain



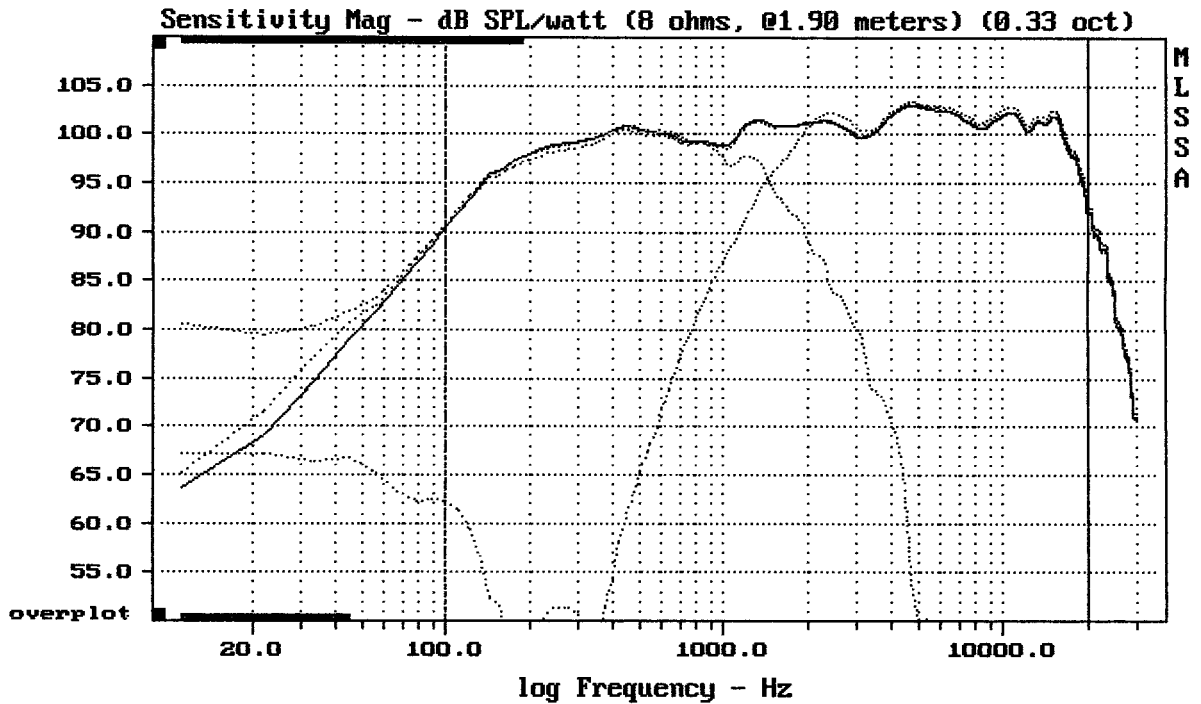
CURSOR: dy = 44.4227 x = 30007.1014 (2704)

MB15N407 + ND3030T3 + B8575



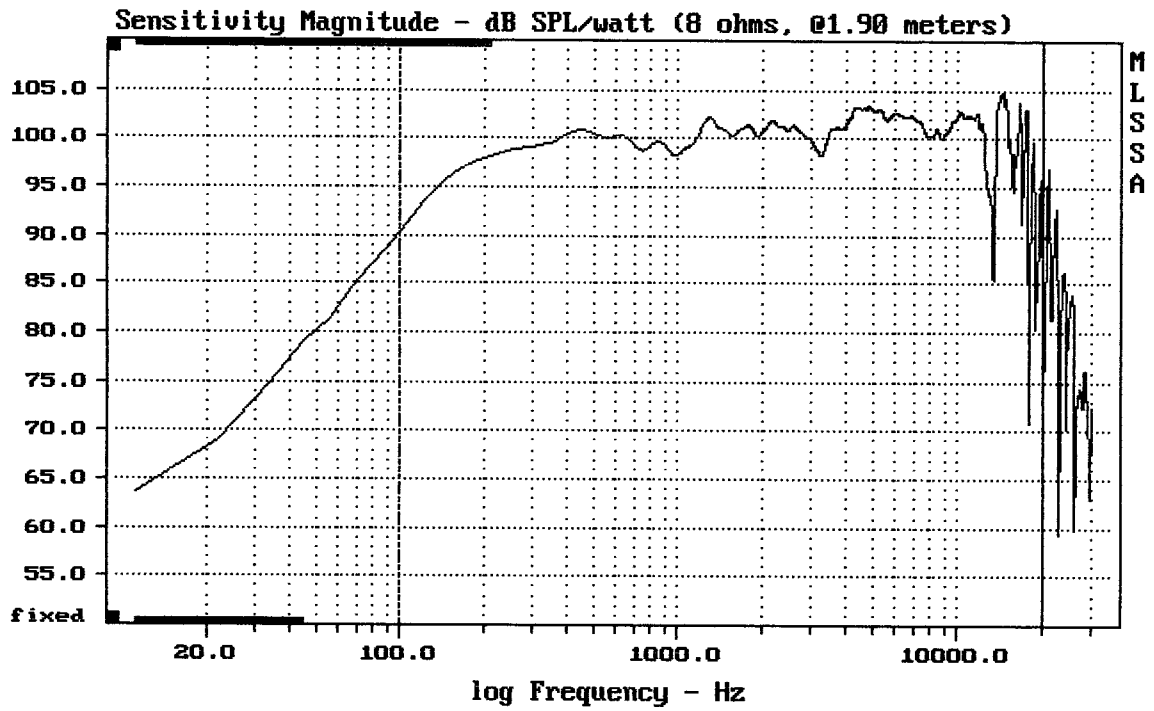
-73.79 dB, 1376 Hz (31), 4.290 msec (40)

DTTO



Level (100:20000 Hz) = 100.29 dB SPL/watt (8 ohms, @1.90 meters) (0.33 oct)

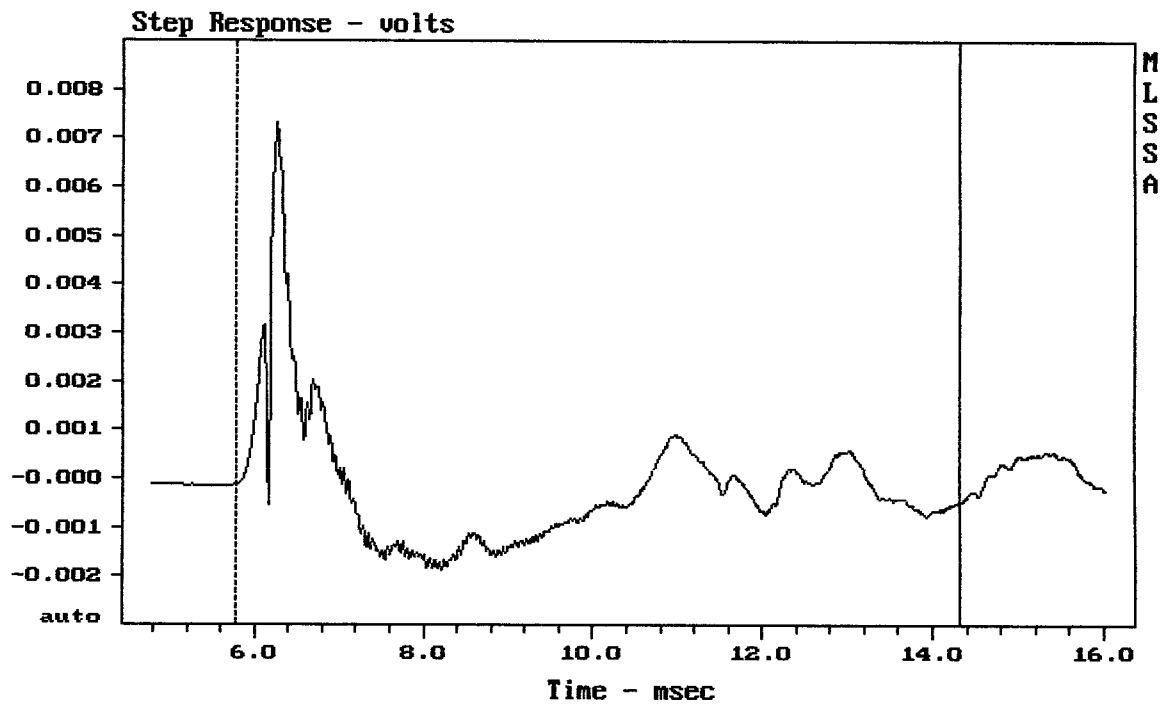
MB15N407 + ND3030T3 + B0575



mean: 100.33, rms: 100.84, std: 2.63, max: 104.84, min: 70.87

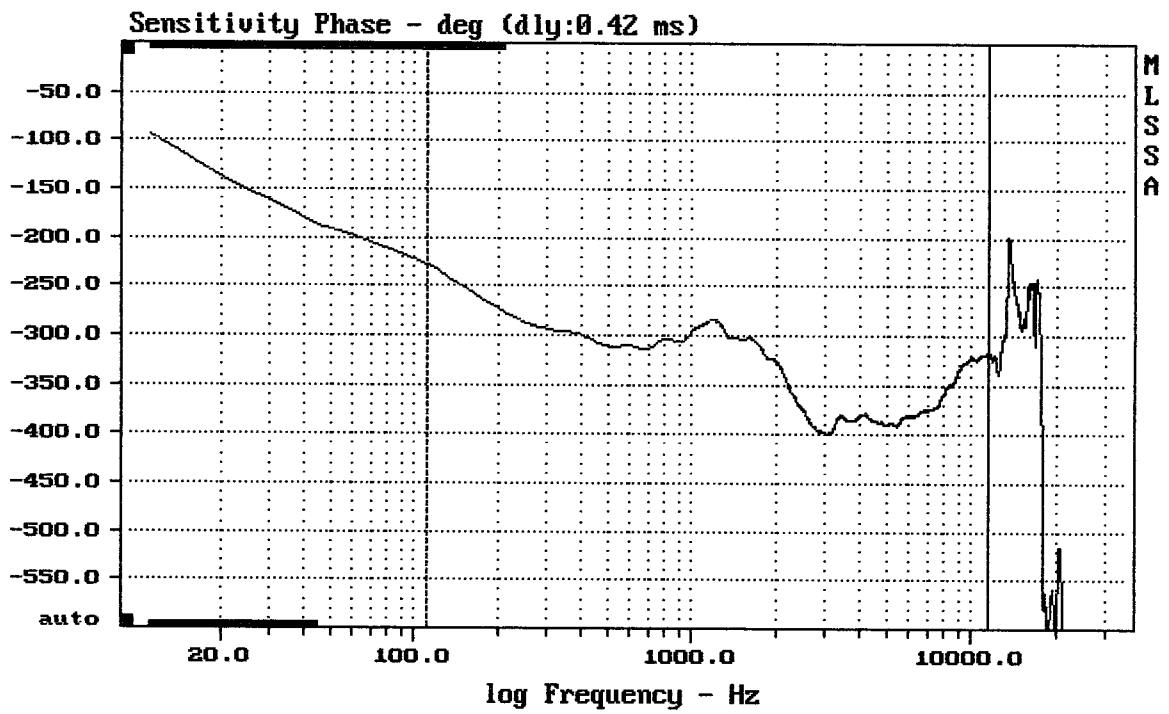
MB15N407 + ND3030T3 + B0575

MLSSA: Frequency Domain



mean: -0.0002048, rms: 0.001358, std: 0.001342, max: 0.007312, min: -0.001856

MB15N407 + ND3030T3 + B0575



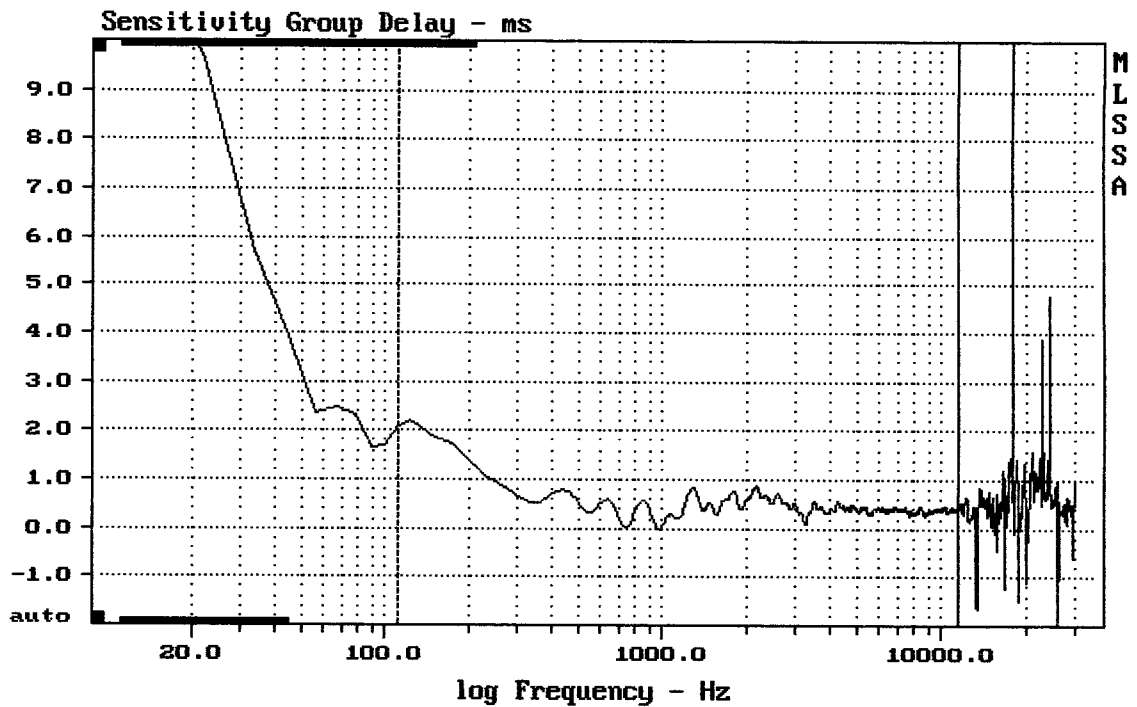

---

mean: -351.5, rms: 353.2, std: 33.79, max: -227.3, min: -400.2

---

MB15N407 + ND3030T3 + B8575

MLSSA: Frequency Domain

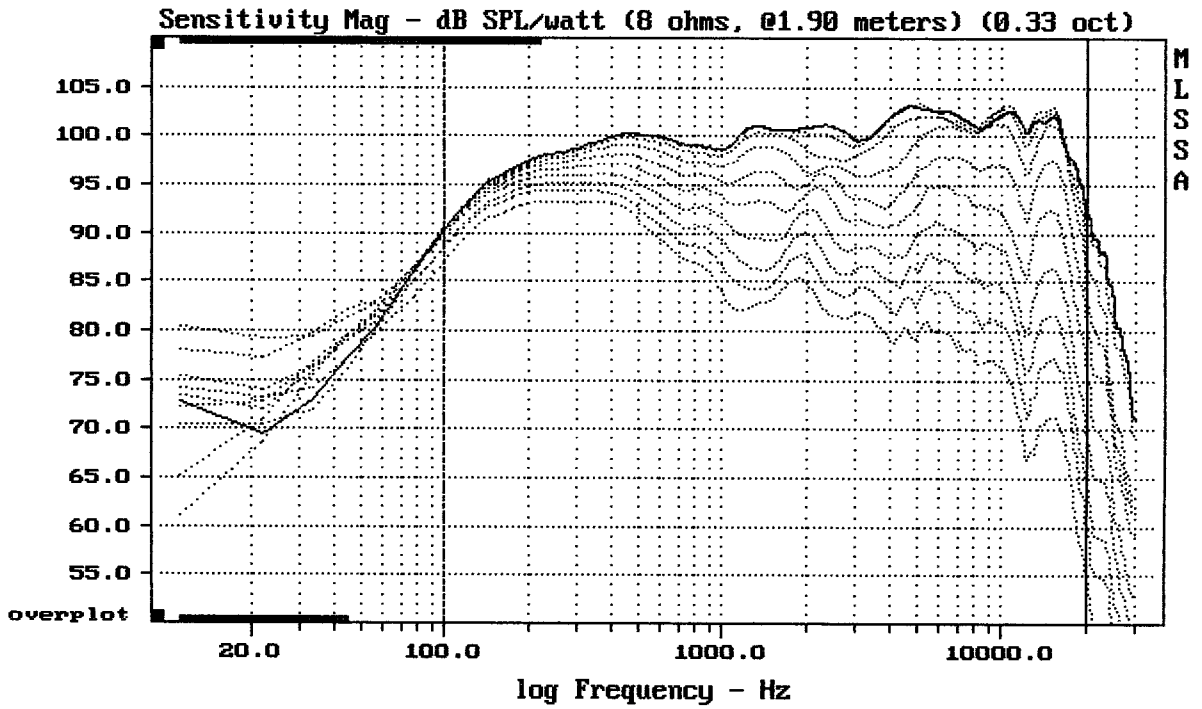



---

mean: 0.4385, rms: 0.477, std: 0.1876, max: 2.22, min: -0.006975

---

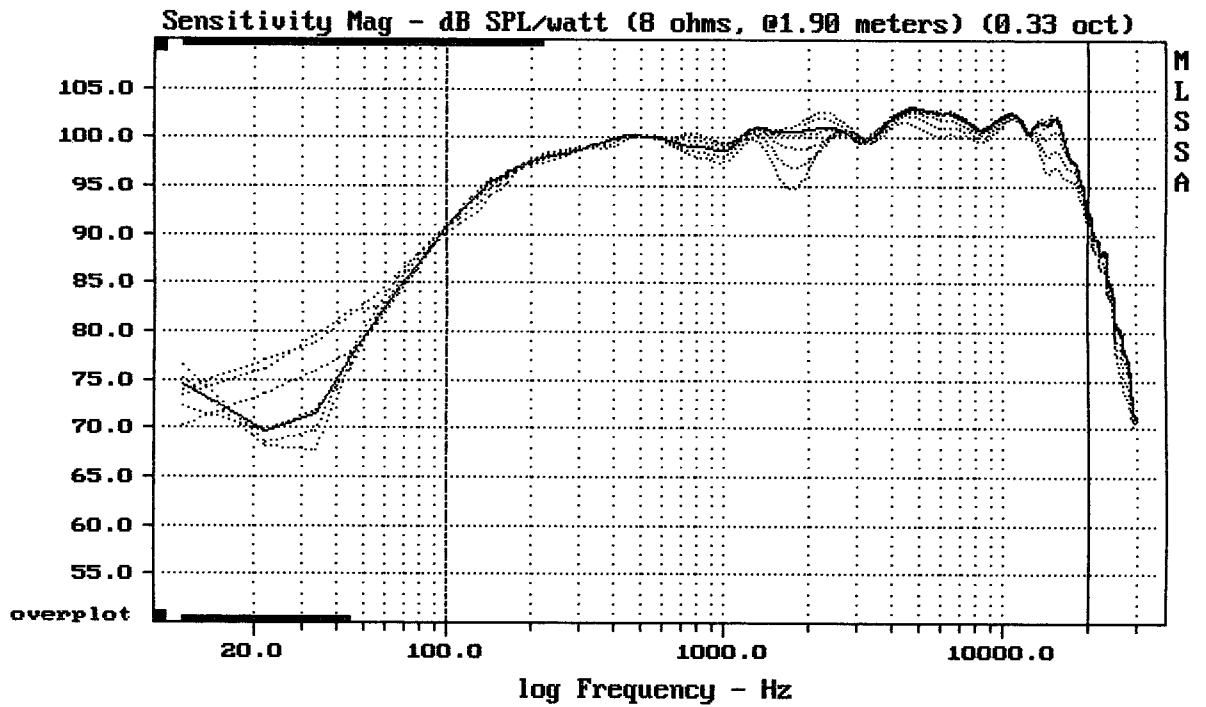
MB15N407 + ND3030T3 + B8575



Overlay Compare: dev= +23/-10, std= 6.8, avg= -26

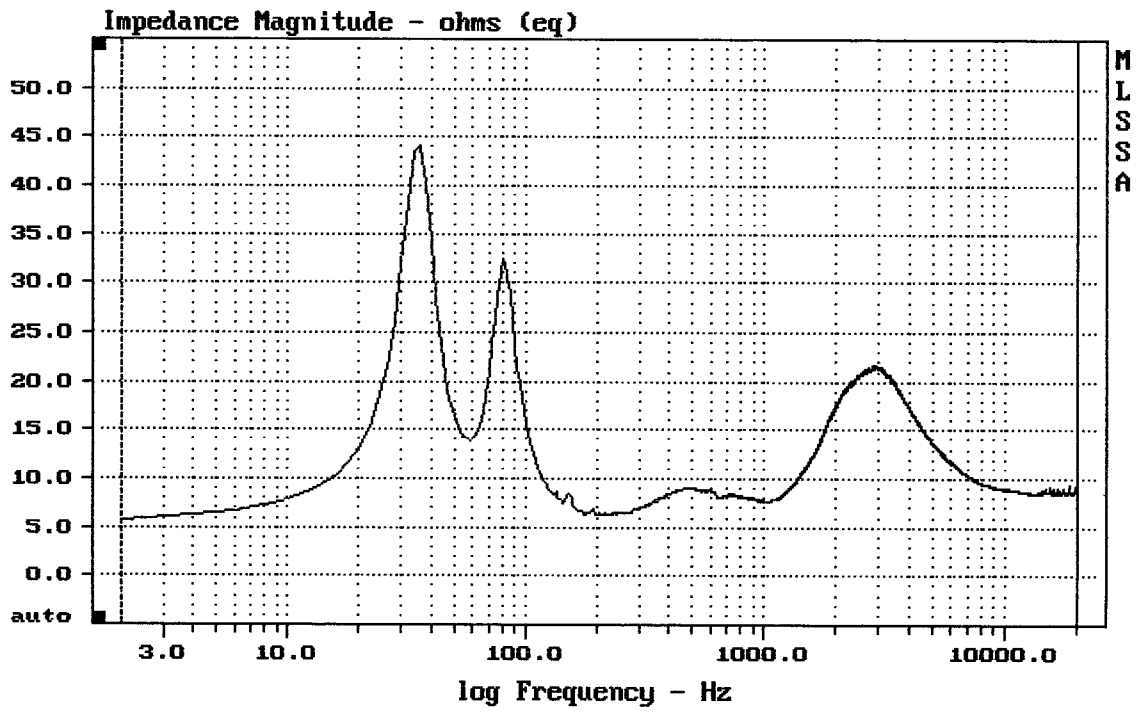
MB15N407 + ND3030T3 + B0575

MLSSA: Frequency Domain



mean: 99.06, rms: 99.37, std: 2.08, max: 101.99, min: 90.18

MB15N407 + ND3030T3 + B0575




---

mean: 10.74, rms: 11.39, std: 3.785, max: 44.16, min: 5.703

---

MB15N407 + ND3030T3 + B0575

MLSSA: Frequency Domain