

Sestava

Osazení:

RCF MR8N301 8/ohm + H6000 + B&C Speakers DE250 8/ohm + RCF H100

· RCF MR8N301 8/ohm

E-shop: <http://eshop.prodance.cz/mr8n301-8-ohm/d-87622/>

· H6000

E-shop: <http://eshop.prodance.cz/h6000/d-92589/>

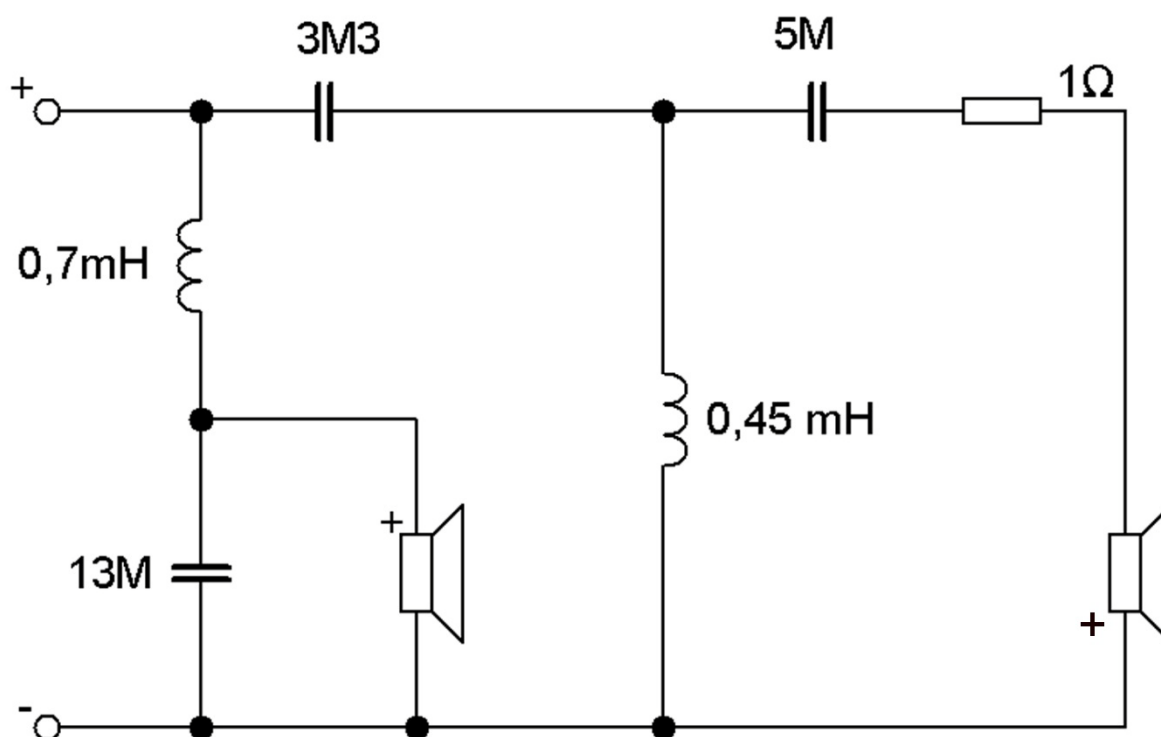
· B&C Speakers DE250 8/ohm

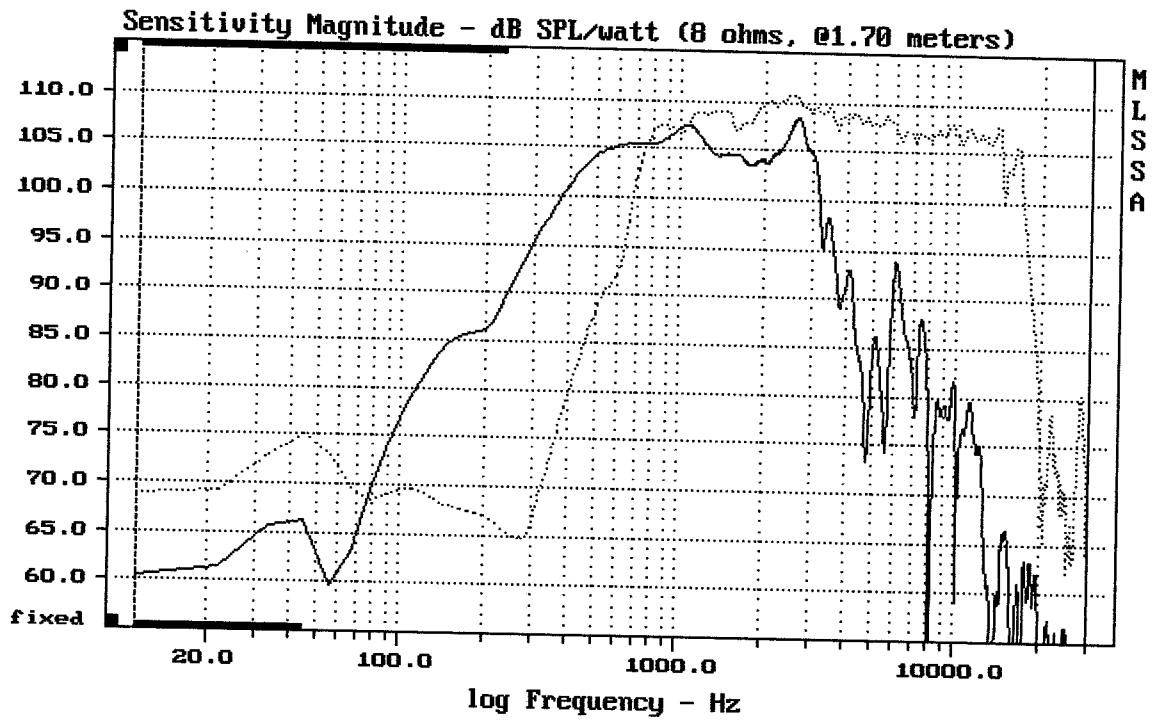
E-shop: <http://eshop.prodance.cz/de250-8-ohm/d-82306/>

· RCF H100

E-shop: <http://eshop.prodance.cz/h100/d-81599/>

Schéma výhybky:

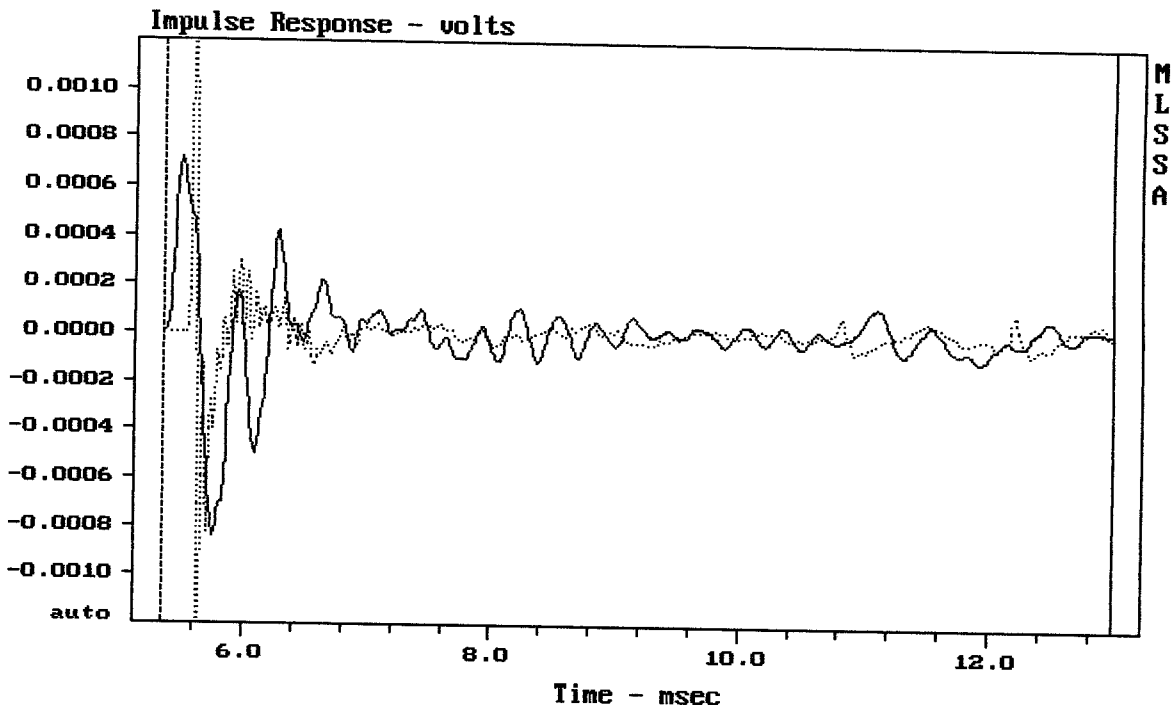




CURSOR: dy = 6.12225 x = 30007.1014 (2704)

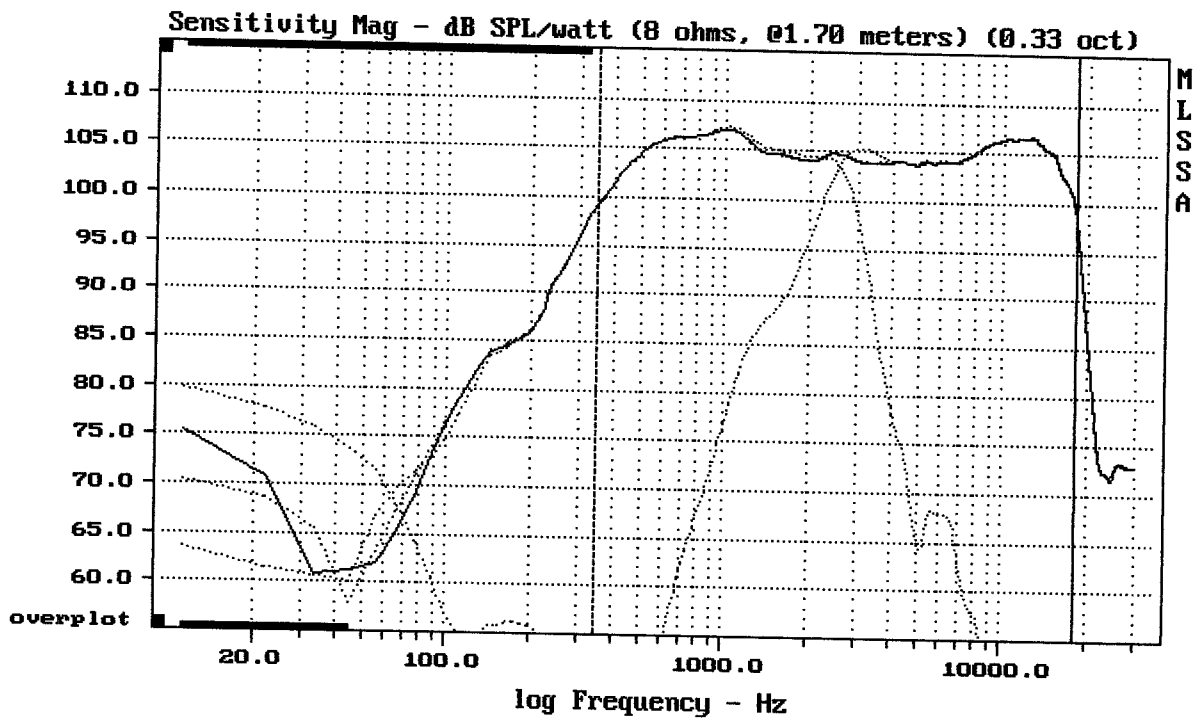
MR8N301 + H6000 + DE250 + H100

MLSSA: Frequency Domain



mean: 7.587e-007, rms: 0.0001517, std: 0.0001517, max: 0.001792, min: -0.001423

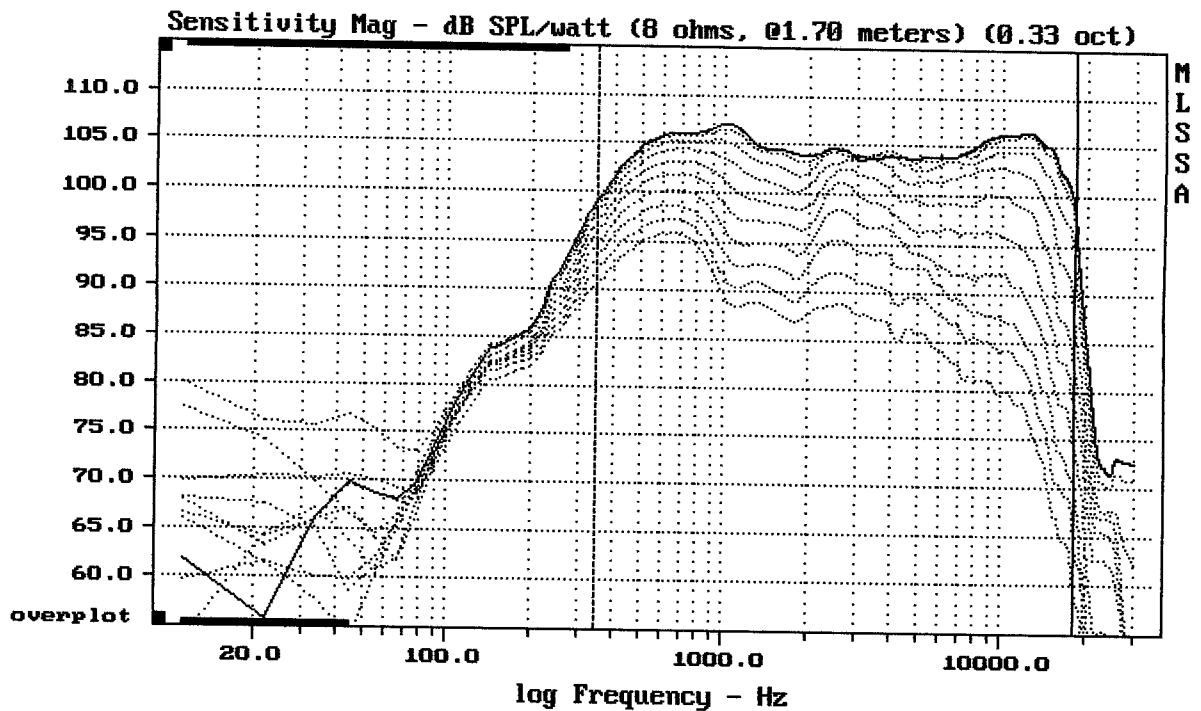
MR8N301 + H6000 + DE250 + H100



Level (344:18200 Hz) = 104.97 dB SPL/watt (8 ohms, @1.70 meters) (0.33 oct)

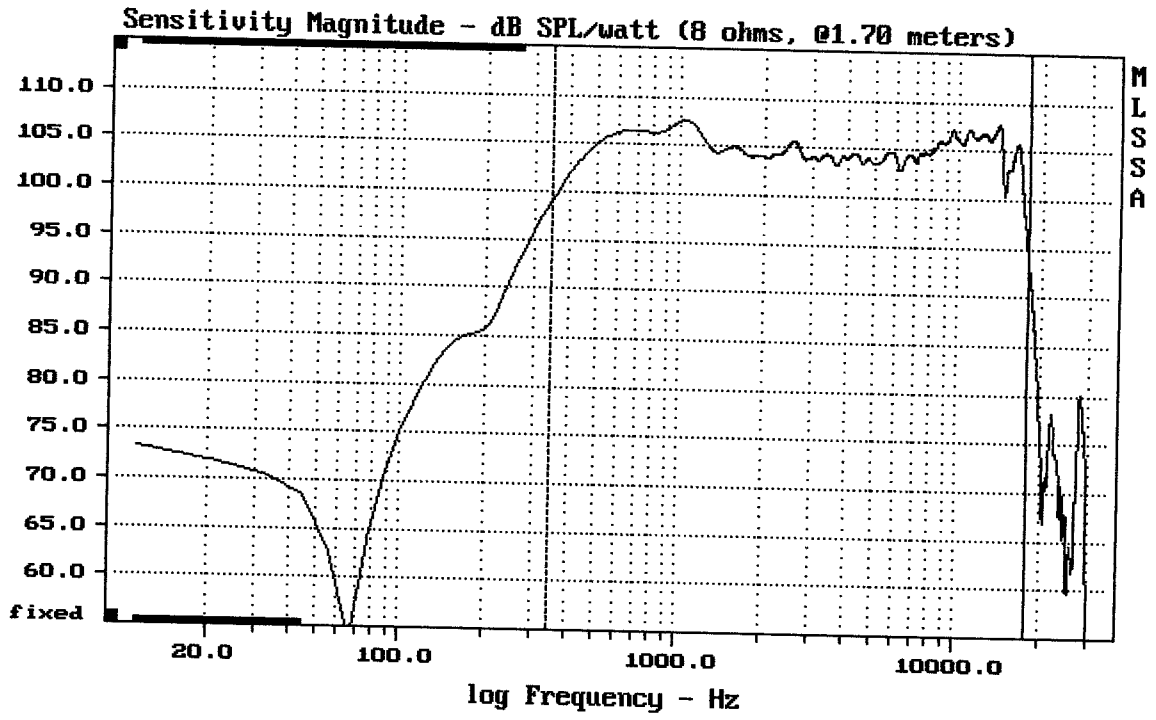
MR8N301 + H6000 + DE250 + H100

MLSSA: Frequency Domain



Overlay Compare: dev= +17/-13, std= 7.8, avg= -25

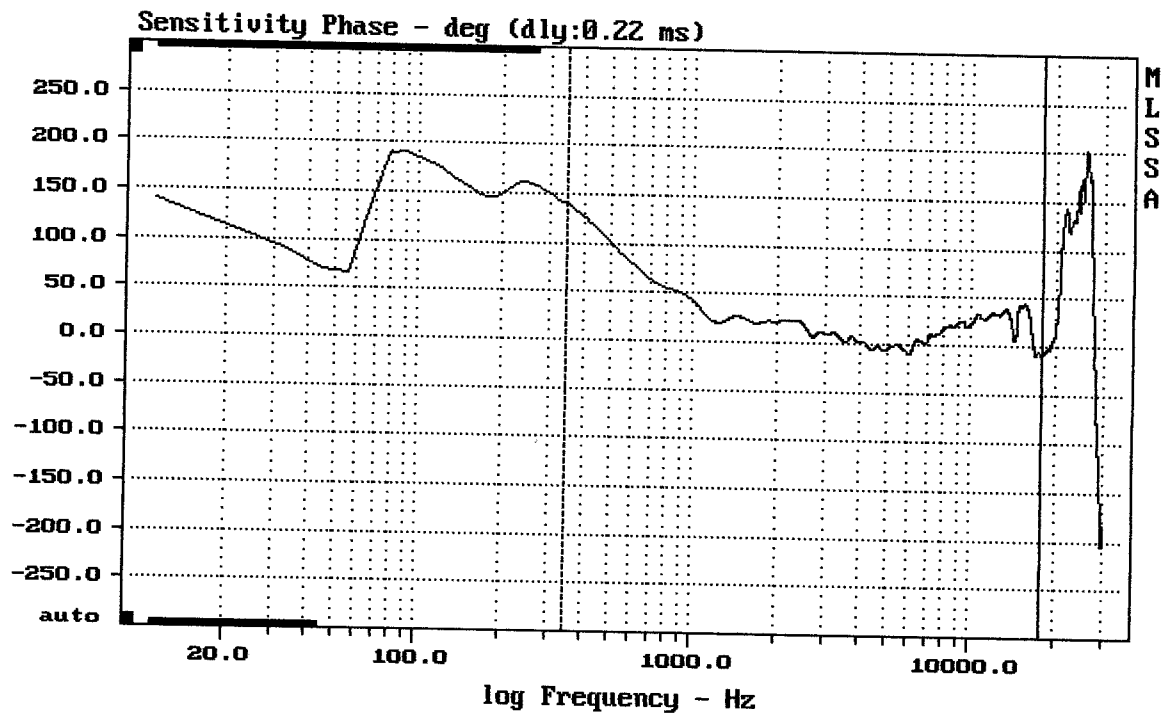
MR8N301 + H6000 + DE250 + H100



Level (344:18000 Hz) = 105.07 dB SPL/watt (8 ohms, @1.70 meters)

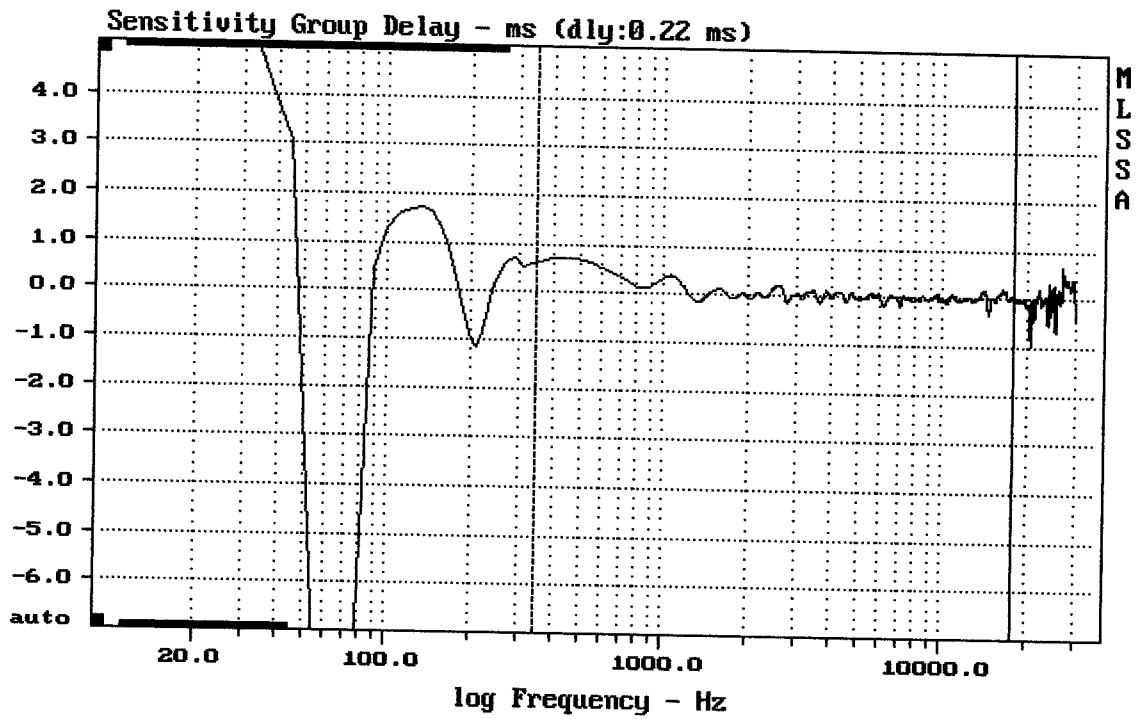
MR8N301 + H6000 + DE250 + H100

MLSSA: Frequency Domain



mean: 19.47, rms: 27.89, std: 19.97, max: 140.3, min: -10.99

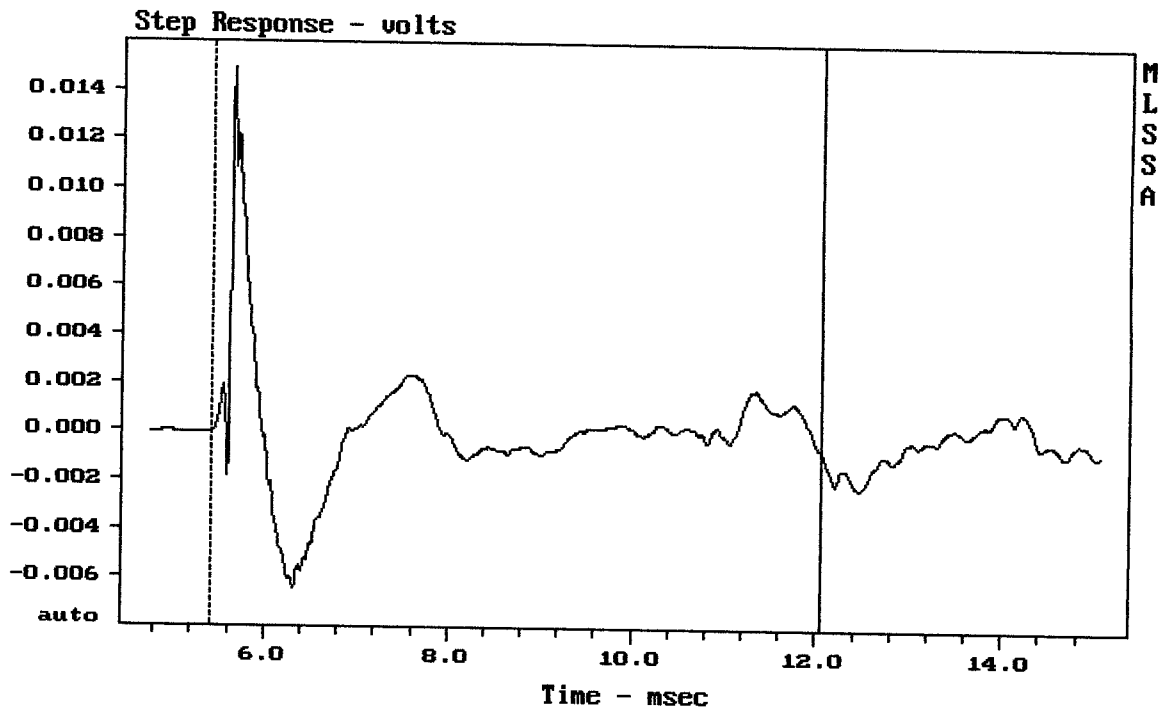
MR8N301 + H6000 + DE250 + H100



mean: 0.02382, rms: 0.1245, std: 0.1222, max: 0.7306, min: -0.3498

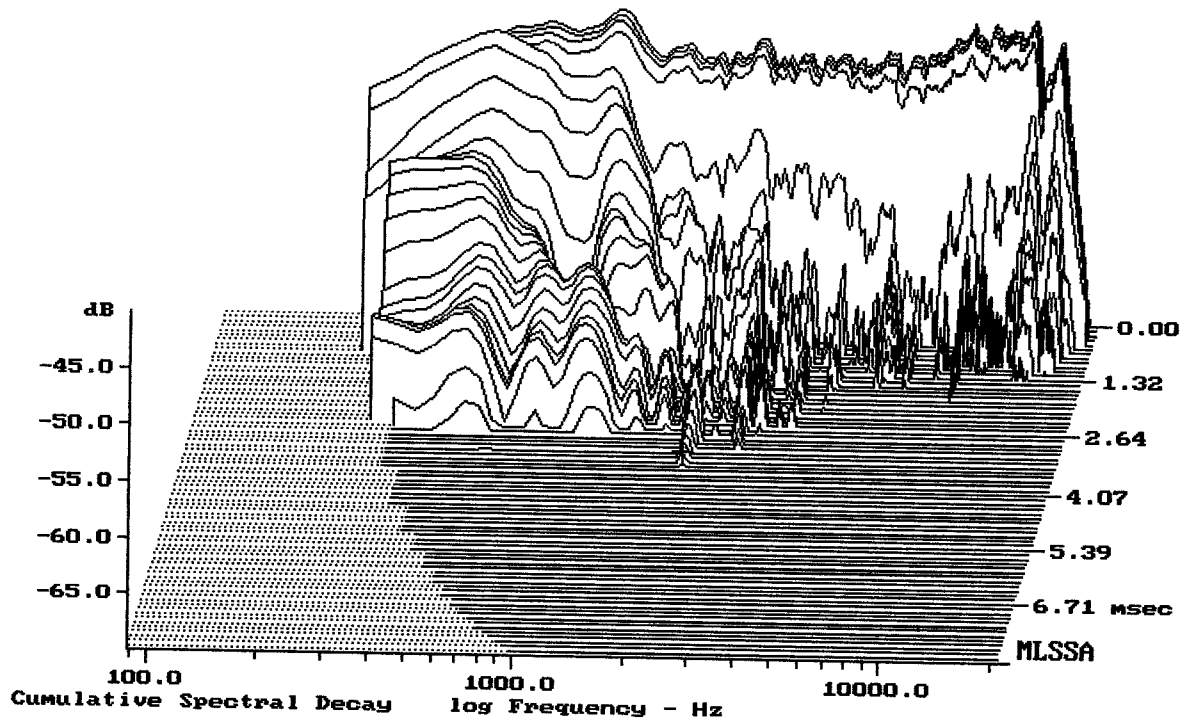
MR0N301 + H6000 + DE250 + H100

MLSSA: Frequency Domain



mean: 8.378e-005, rms: 0.002542, std: 0.00254, max: 0.01493, min: -0.006472

MR0N301 + H6000 + DE250 + H100



-69.14 dB, 2042 Hz (46), 3.410 msec (32)

DTTO