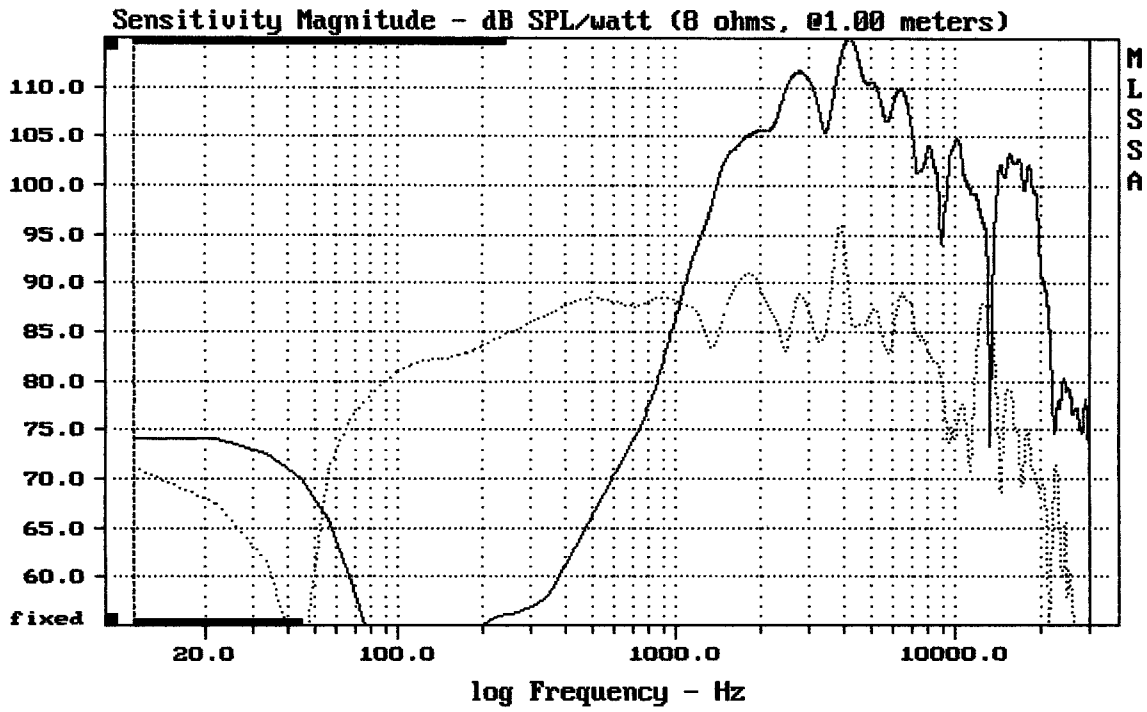


**E-shop:**

B&C Speakers – 5FCX44

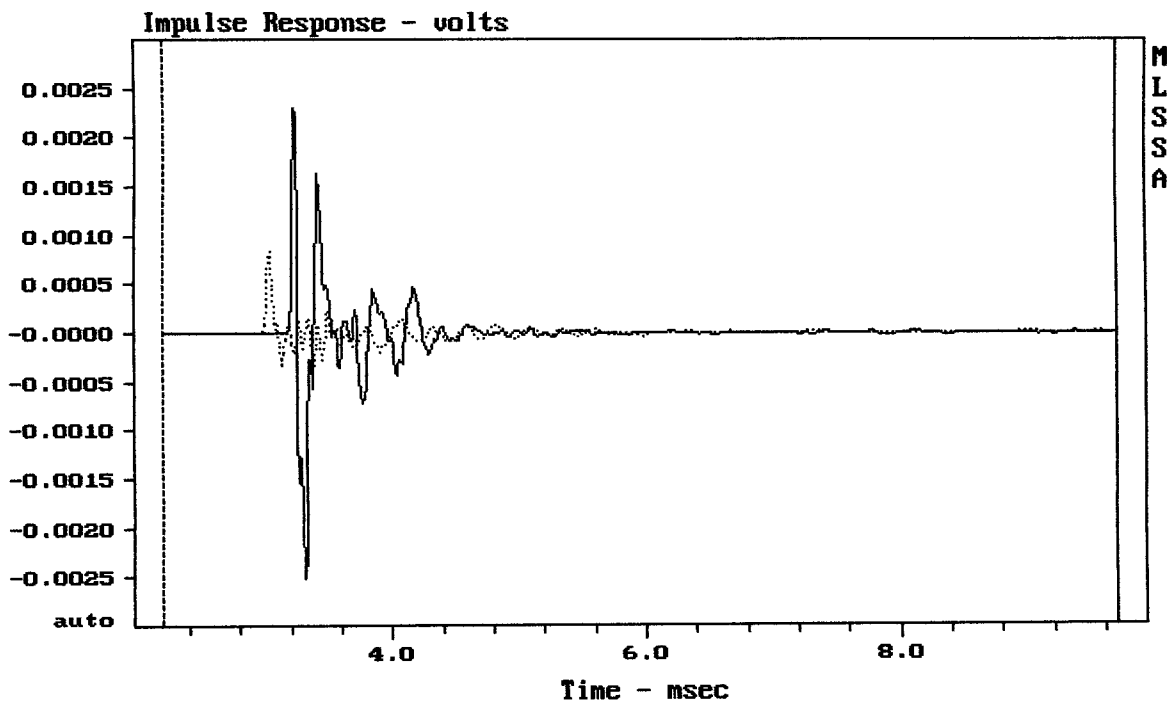
<http://eshop.prodance.cz/5fcx44-8-ohm/d-97917/>



CURSOR:  $dy = -30.4703$   $x = 30007.1014$  (2704)

5FCX44

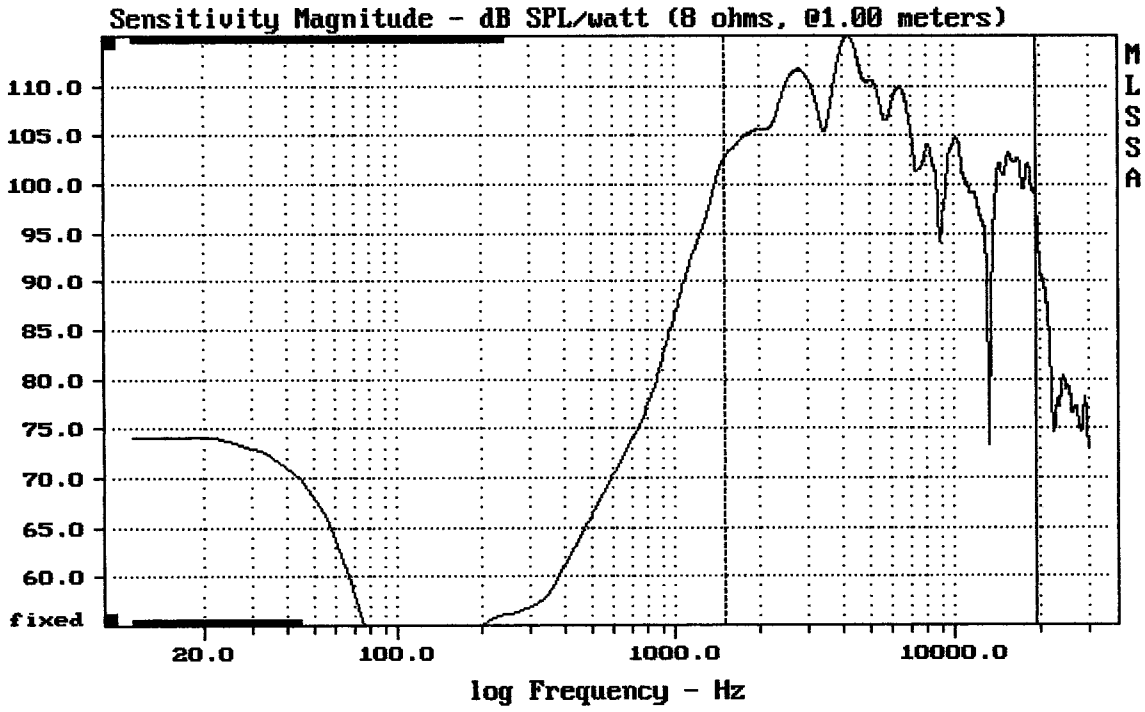
MLSSA: Frequency Domain



CURSOR:  $dy = 4.92031e-007$   $x = 9.6910$  (881)

5FCX44

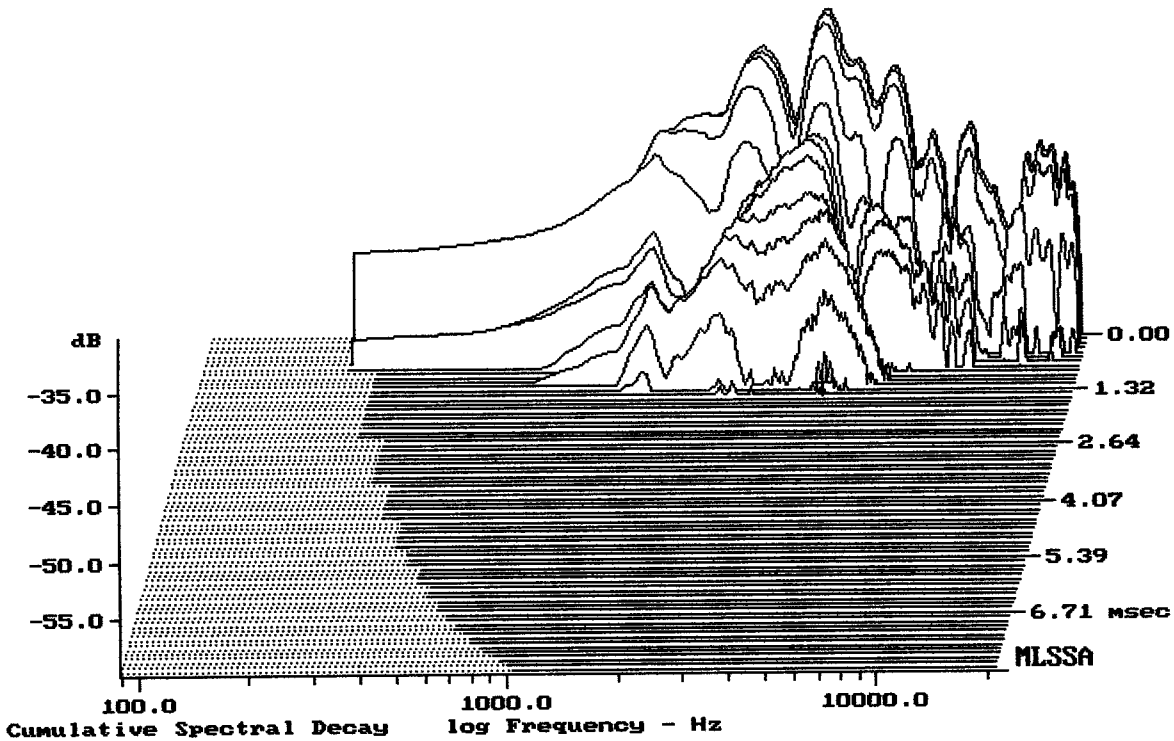
MLSSA: Time Domain



Level (1498:19409 Hz) = 107.88 dB SPL/watt (8 ohms, @1.00 meters)

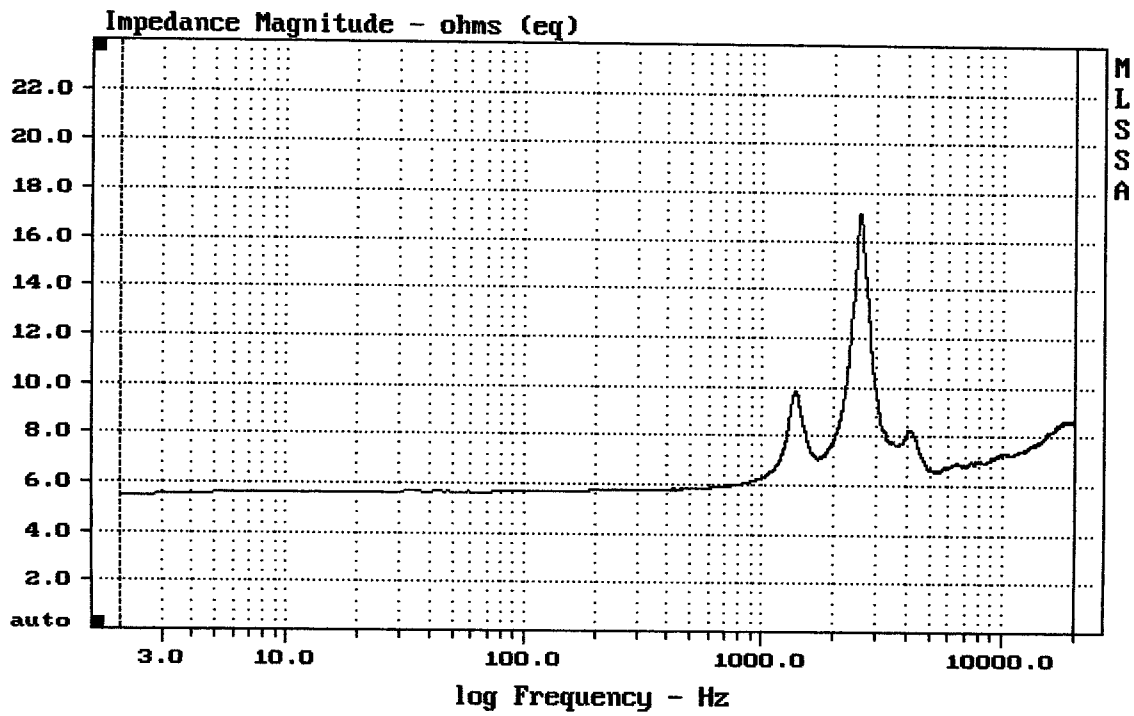
5FCX44

MLSSA: Frequency Domain



-58.92 dB, 4439 Hz (100), 1.430 msec (14)

DTTO



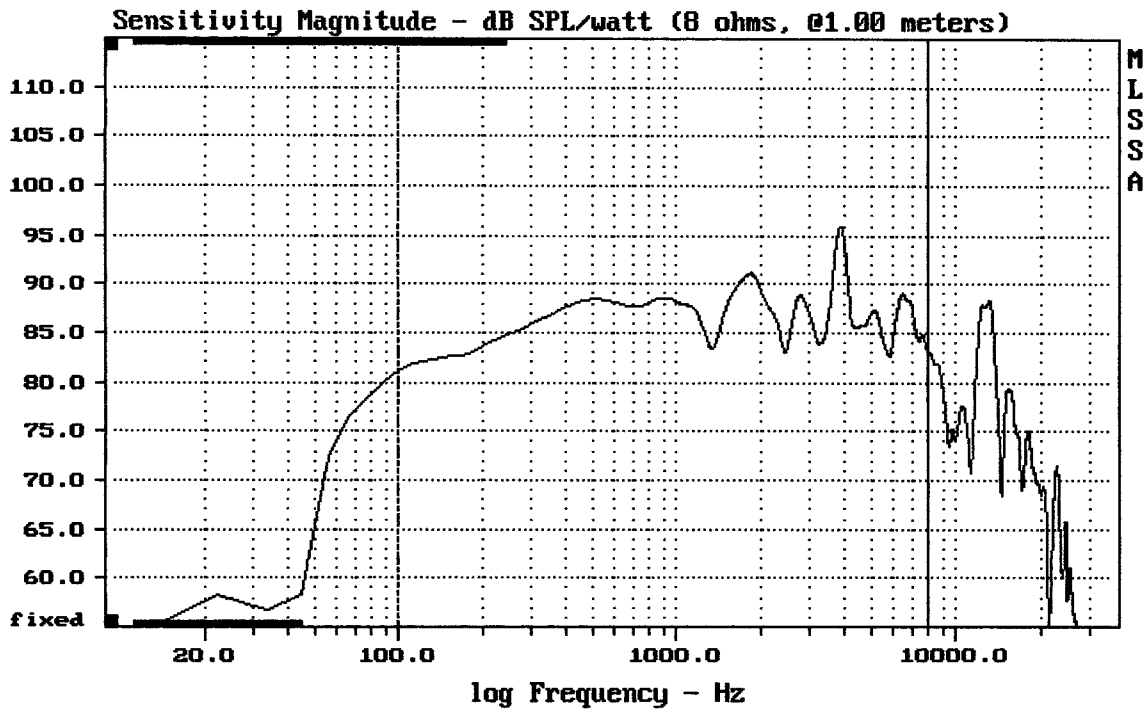
---

mean: 7.774, rms: 7.9, std: 1.406, max: 17.18, min: 5.467

---

5FCX44

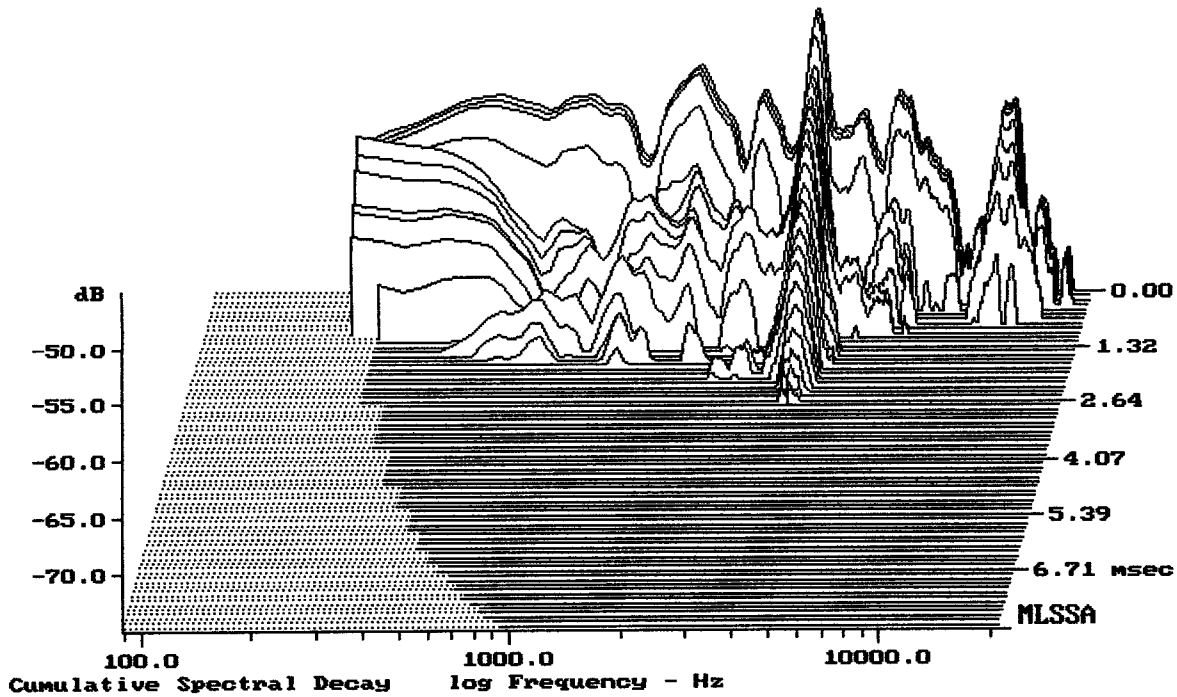
MLSSA: Frequency Domain



Level (100:8001 Hz) = 87.27 dB SPL/watt (8 ohms, @1.00 meters)

5FCX44

MLSSA: Frequency Domain



-73.96 dB, 3817 Hz (86), 2.640 msec (25)

DTTO

Measured Data

QC Limits

Line	Parameter	Value	Units
1	RMSE-free	0.77	Ohms
2	Fs	73.76	Hz
3	Re	5.61	Ohms[dc]
4	Res	177.99	Ohms
5	Qms	10.23	
6	Qes	0.32	
7	Qts	0.31	
8	L1	0.49	mH
9	L2	0.51	mH
10	R2	1.76	Ohms
11	RMSE-load	0.46	Ohms
12	Vas(Sd)	3.90	liters
13	Mms	9.44	grams
14	Cms	493	$\mu$ M/Newton
15	Bl	8.72	Tesla-M
16	SPLref(Sd)	88.7	dB[Re]
17	Rub-index	0.01	

Method: Mass-loaded (10.00 grams)

Area (Sd): 75.00 sq cm

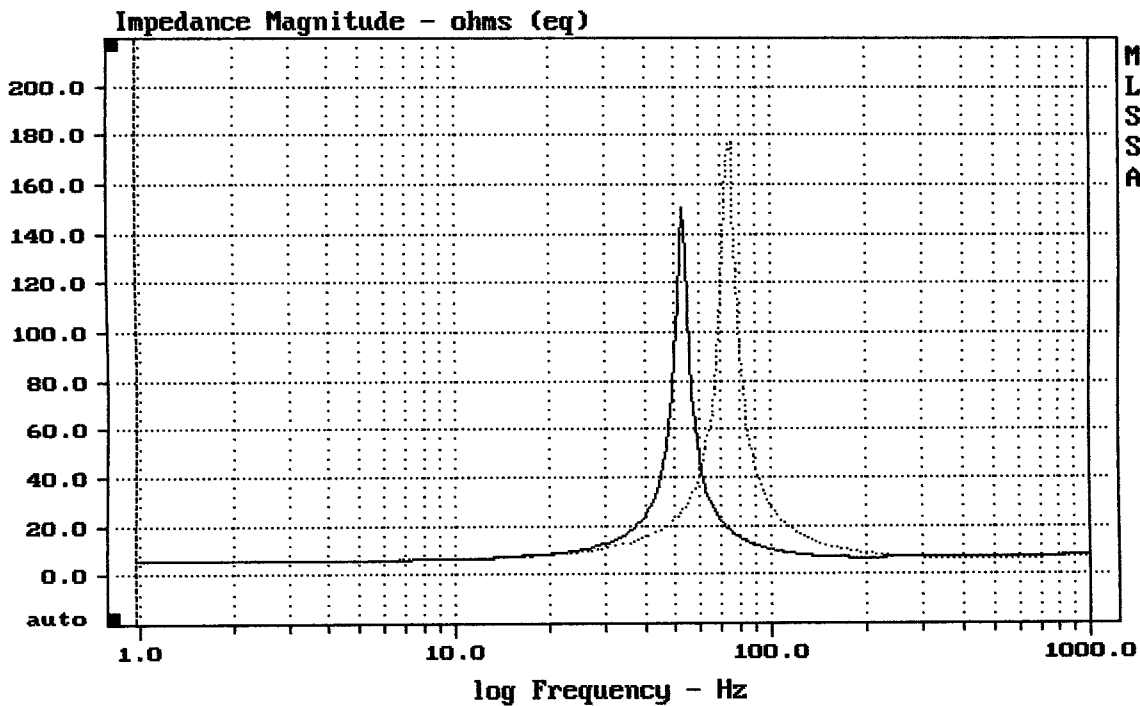
DCR mode: Measure (-0.13 ohms)

QC file: CLOSED

Analysis successful. Shift in Fs = -28.7% (-20% to -50% is recommended).

5FCX44

MLSSA: Parameters



mean: 10.95, rms: 20.34, std: 17.14, max: 176.9, min: 5.75

DTTO

MLSSA: Frequency Domain