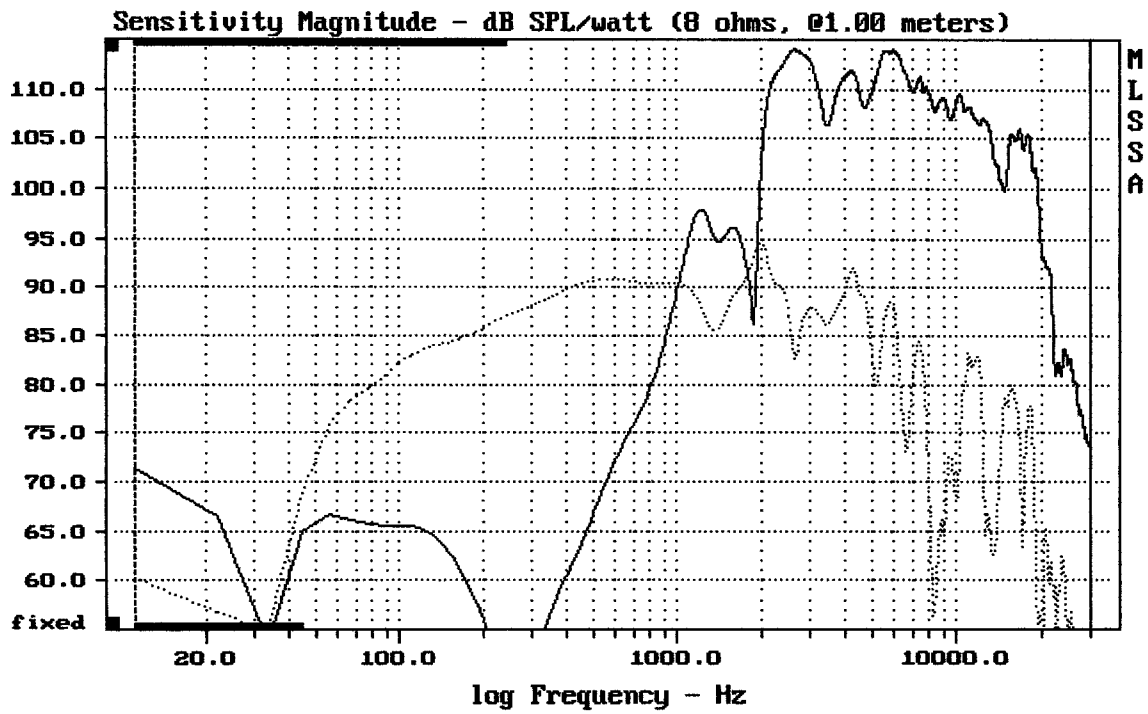


**E-shop:**

B&C Speakers – 6FHX51

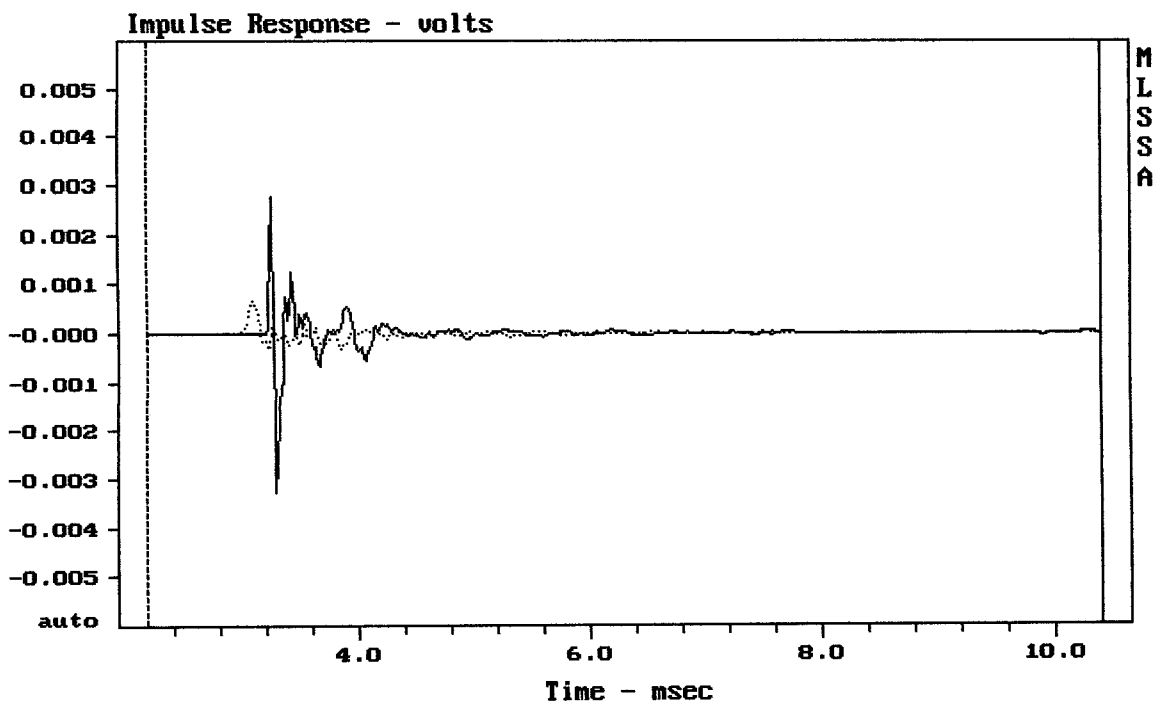
<http://eshop.prodance.cz/6fhx51-8-ohm/d-97918/>



CURSOR: dy = -44.63 x = 30007.1014 (2704)

6FH51

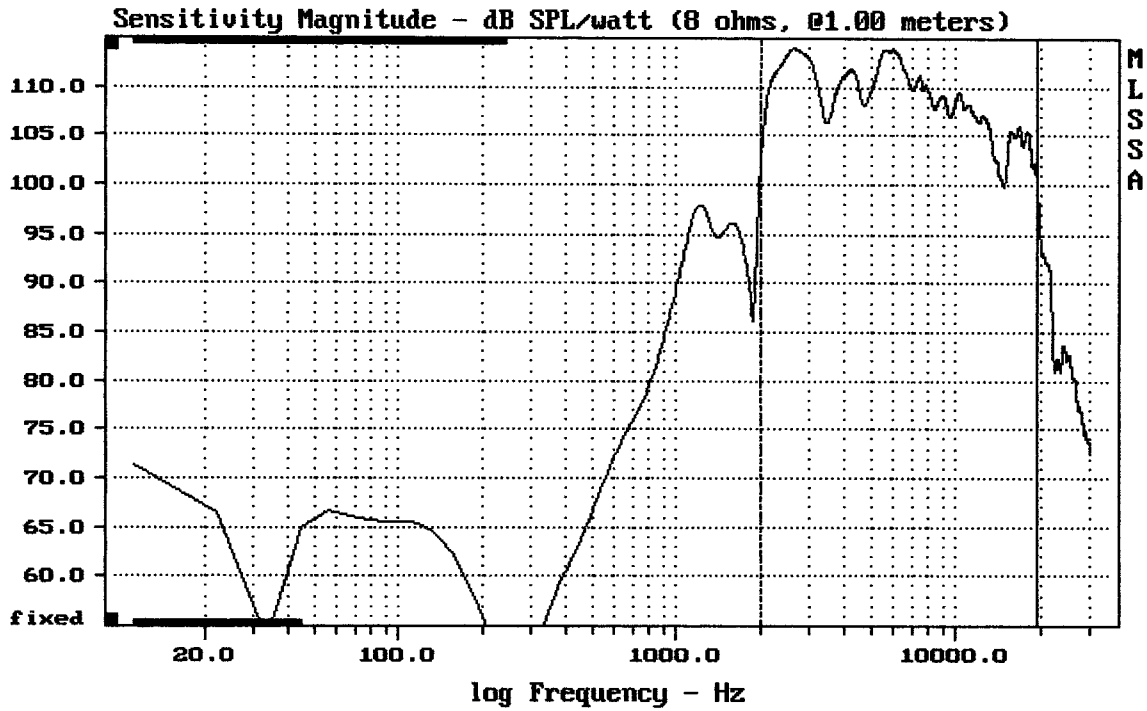
MLSSA: Frequency Domain



CURSOR: dy = 4.08558e-005 x = 10.3950 (945)

6FH51

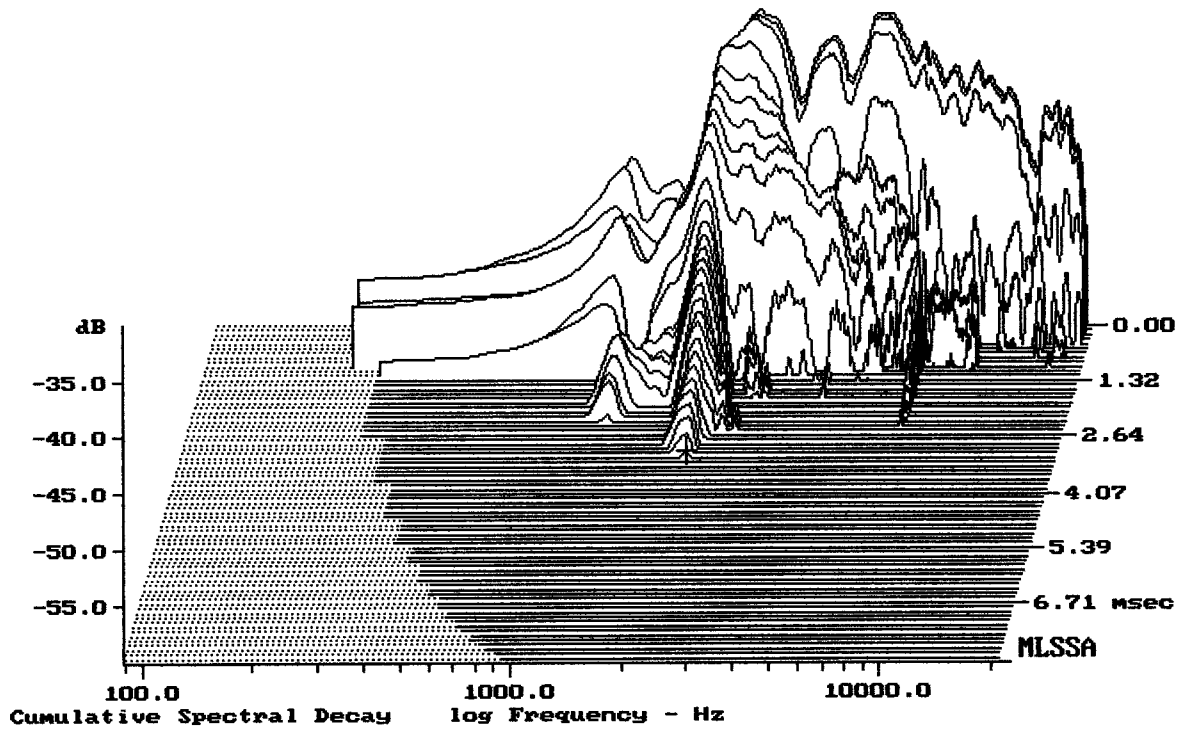
MLSSA: Time Domain



Level (1998:19498 Hz) = 110.18 dB SPL/watt (8 ohms, @1.00 meters)

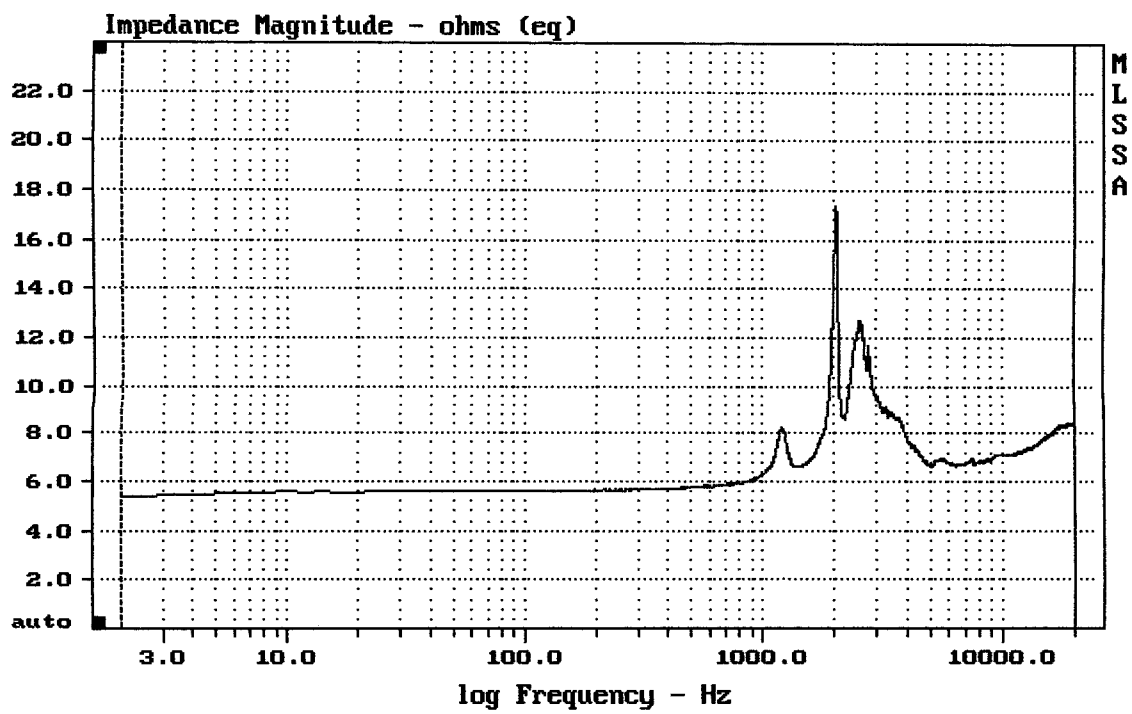
6FH51

MLSSA: Frequency Domain



-59.37 dB, 2086 Hz (47), 3.190 msec (30)

DTTO



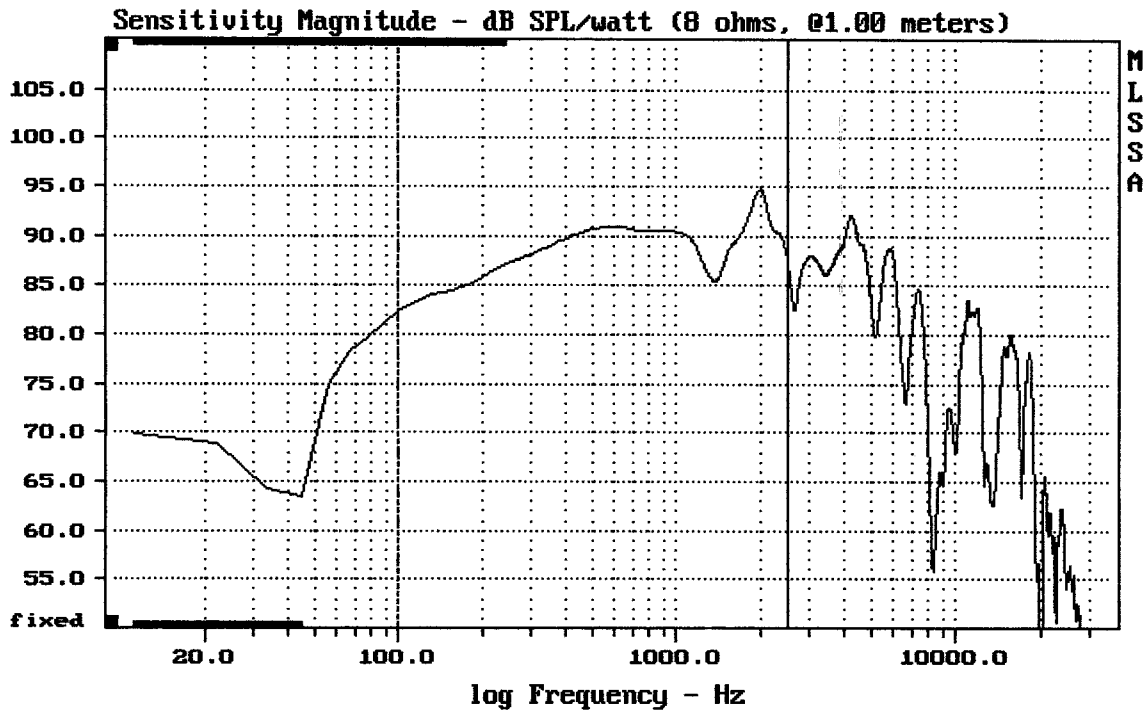
---

mean: 7.614, rms: 7.708, std: 1.2, max: 17.35, min: 5.389

---

6FHX51

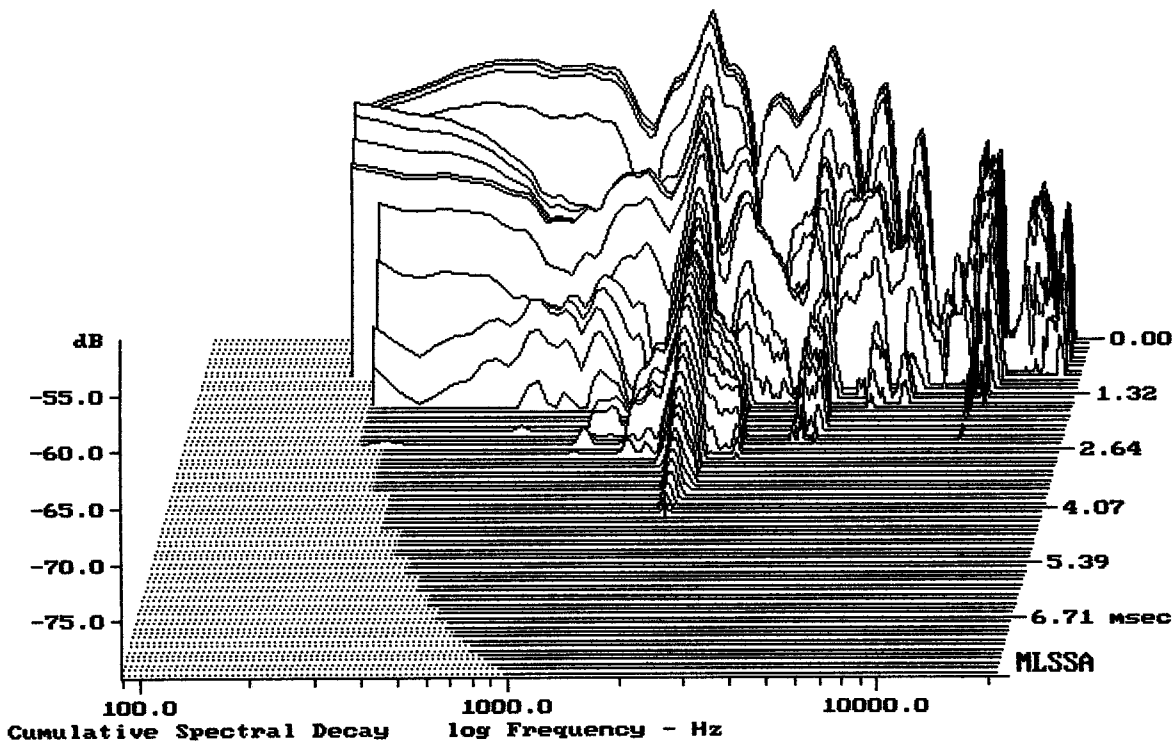
MLSSA: Frequency Domain



Level (100:2500 Hz) = 89.16 dB SPL/watt (8 ohms, @1.00 meters)

6FHXS1

MLSSA: Frequency Domain



-79.23 dB, 1998 Hz (45), 4.180 msec (39)

DITO

Measured Data

QC Limits

Line	Parameter	Value	Units
1	RMSE-free	0.65	Ohms
2	Fs	95.02	Hz
3	Re	5.60	Ohms[dc]
4	Res	96.11	Ohms
5	Qms	7.44	
6	Qes	0.43	
7	Qts	0.41	
8	L1	0.58	mH
9	L2	0.74	mH
10	R2	2.11	Ohms
11	RMSE-load	1.68	Ohms
12	Vas(Sd)	4.70	liters
13	Mms	11.09	grams
14	Cms	253	$\mu\text{M}/\text{Newton}$
15	B1	9.25	Tesla-M
16	SPLref(Sd)	91.5	dB[Re]
17	Rub-index	0.06	

Method: Mass-loaded (10.00 grams)

Area (Sd): 115.00 sq cm

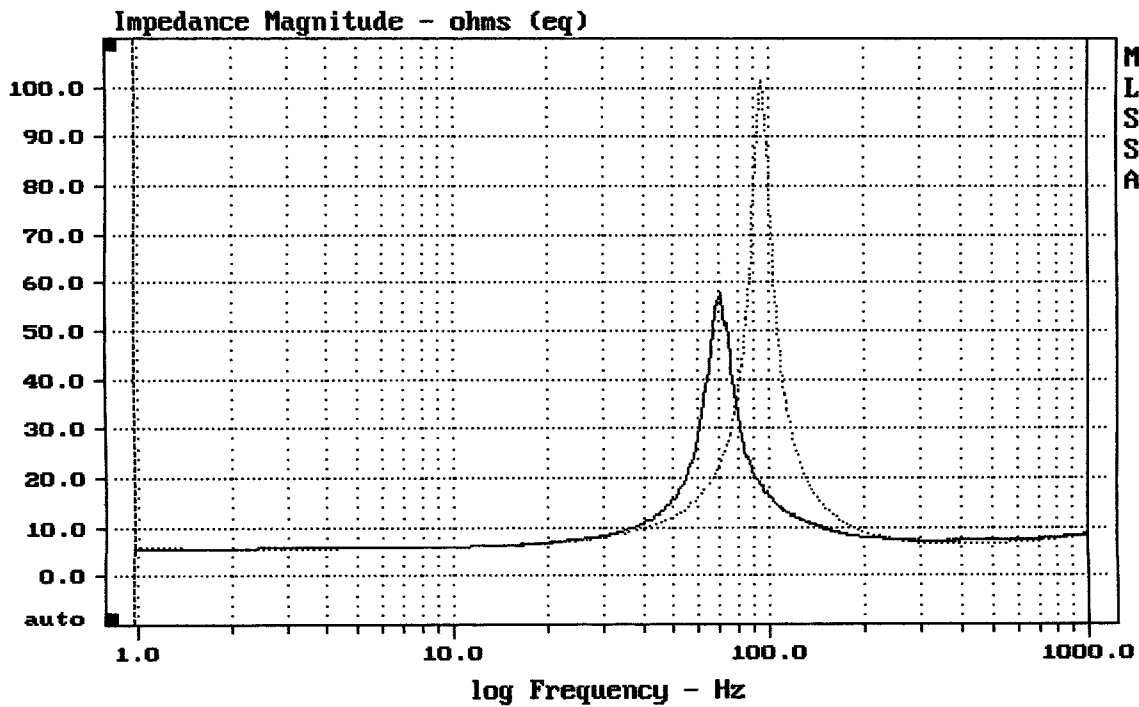
DCR mode: Measure (-0.13 ohms)

QC file: CLOSED

Analysis successful. Shift in Fs = -26.5% (-20% to -50% is recommended).

6FH51

MLSSA: Parameters



mean: 10.38, rms: 15.56, std: 11.59, max: 101.6, min: 5.721

DTTO

MLSSA: Frequency Domain