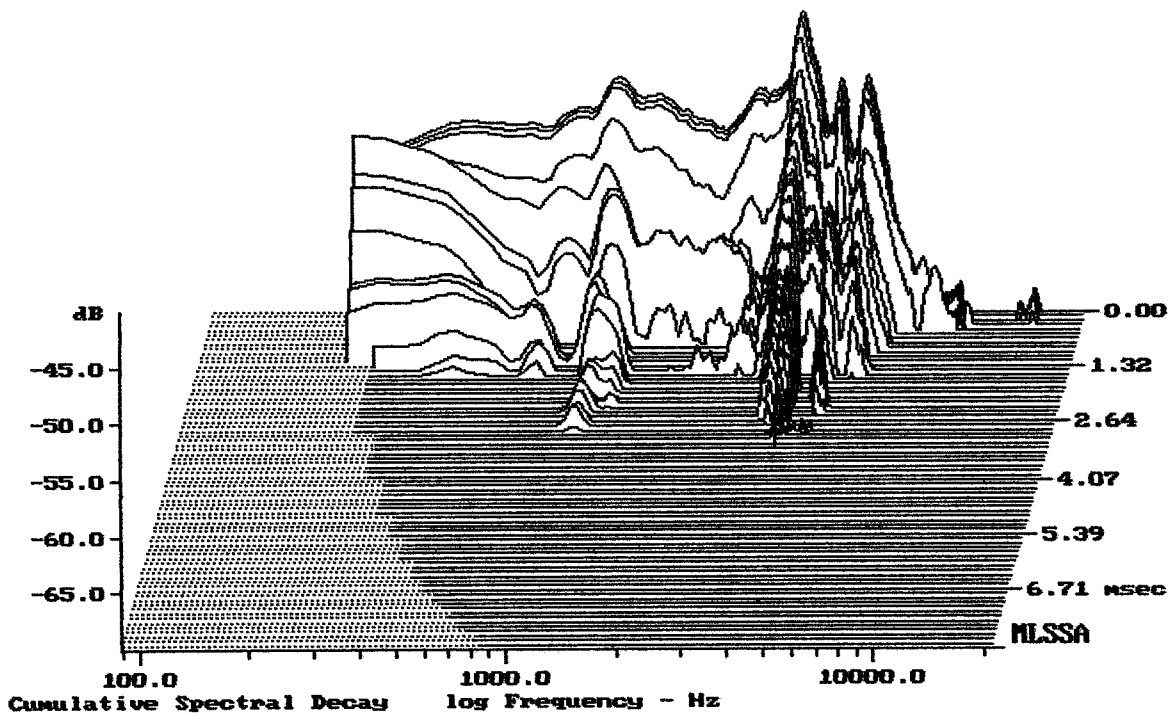


Level (200:6004 Hz) = 97.57 dB SPL/watt (16 ohms, @1.00 meters)

8MDN51/16

MLSSA: Frequency Domain



-69.48 dB, 3729 Hz (84), 3.000 msec (29)

DTTO

Measured Data

QC Limits

| Line | Parameter | Value | Units |
|------|------------|--------|-----------------------------|
| 1 | RMSE-free | 0.98 | Ohms |
| 2 | Fs | 89.15 | Hz |
| 3 | Re | 10.12 | Ohms[dc] |
| 4 | Res | 181.41 | Ohms |
| 5 | Qms | 7.15 | |
| 6 | Qes | 0.40 | |
| 7 | Qts | 0.38 | |
| 8 | L1 | 0.61 | mH |
| 9 | L2 | 1.33 | mH |
| 10 | R2 | 6.73 | Ohms |
| 11 | RMSE-load | 1.43 | Ohms |
| 12 | Vas(Sd) | 11.46 | liters |
| 13 | Mms | 17.86 | grams |
| 14 | Cms | 178 | $\mu\text{M}/\text{Newton}$ |
| 15 | B1 | 15.93 | Tesla-M |
| 16 | SPLref(Sd) | 94.9 | dB[Re] |
| 17 | Rub-index | 0.00 | |

Method: Mass-loaded (30.00 grams)

Area (Sd): 213.82 sq cm

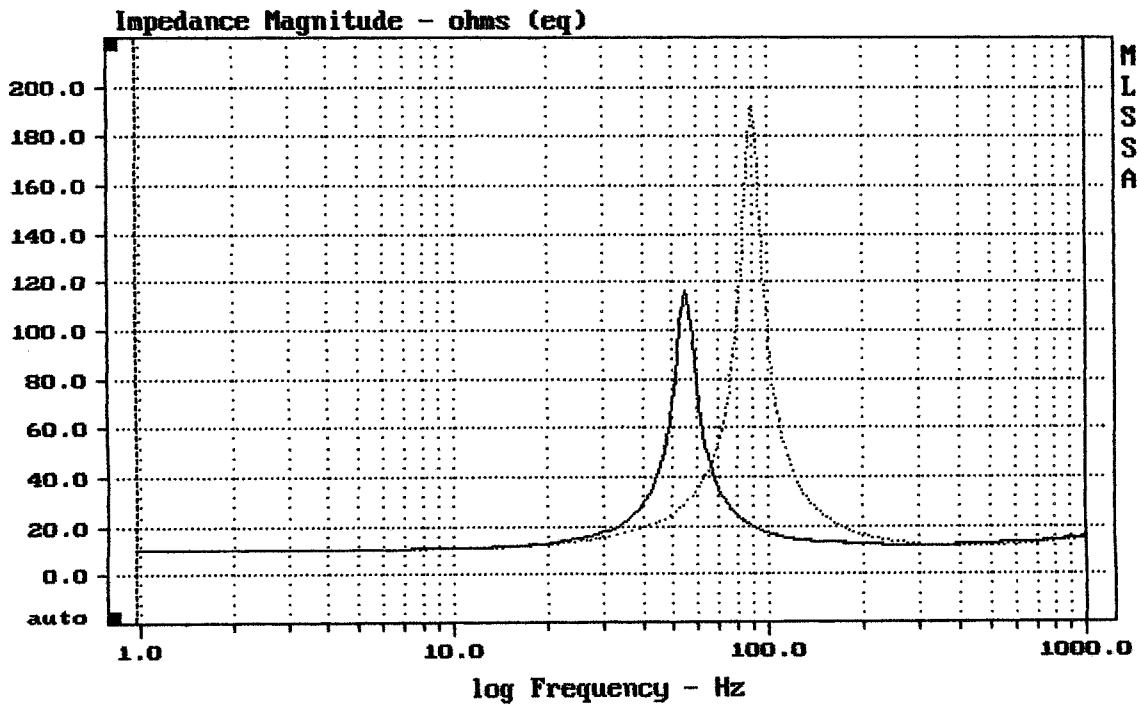
DCR mode: Measure (-0.11 ohms)

QC file: CLOSED

Analysis successful. Shift in Fs = -38.6% (-20% to -50% is recommended).

8MDN51/16

MLSSA: Parameters



mean: 18.91, rms: 28.87, std: 21.81, max: 192, min: 10.25

MLSSA: Frequency Domain